



# Site Evaluation and Planning Guide

## Site Requirements

Floor must be flat within 1/2" over the area equipment will be installed.

Requires minimum 56" wide x 76" tall doorway into building.\*

## Operating Specifications

Power Supply: 208-240 Volts  
15 Amp, 50/60 Hz, Single Phase

Ambient Temperature Limits: 60 °F ±25 °F

Ambient Humidity Limits: 60% ± 20% Relative Humidity, non condensing

Power Consumption in "Attract" Mode: 375 W

Power Consumption in "Play" Mode: 1000W

## Dimensions

These dimensions are provided to assist in determining layout and space requirements necessary to install Thunder Bowl.

Total length of standard unit + 42'-4" (12900mm)

Width of standard unit\*\* 8'-8" (2642mm)

Minimum service area required behind electrical cabinet 2' (609.6mm)

Recommended height from floor to top of Masking Unit 8' (2438mm)

Recommended height from floor to top of Overhead Monitors (optional) 9' (2743mm)

Length of lane (from foul line to rear of pindeck) 29'-6" (8992mm)

Machine Enclosure Dimensions(optional) 12' wide x 12' deep x 8' high (3658mm x 3658mm x 2438mm)

## Multiple Units

Each Thunder Bowl unit consists of two lanes of bowling. A unit may not be split in half to produce a single lane of bowling. Units can be joined side-by-side and the widths of multiple units are tabulated below. To join units side-by-side, a union kit must be purchased.

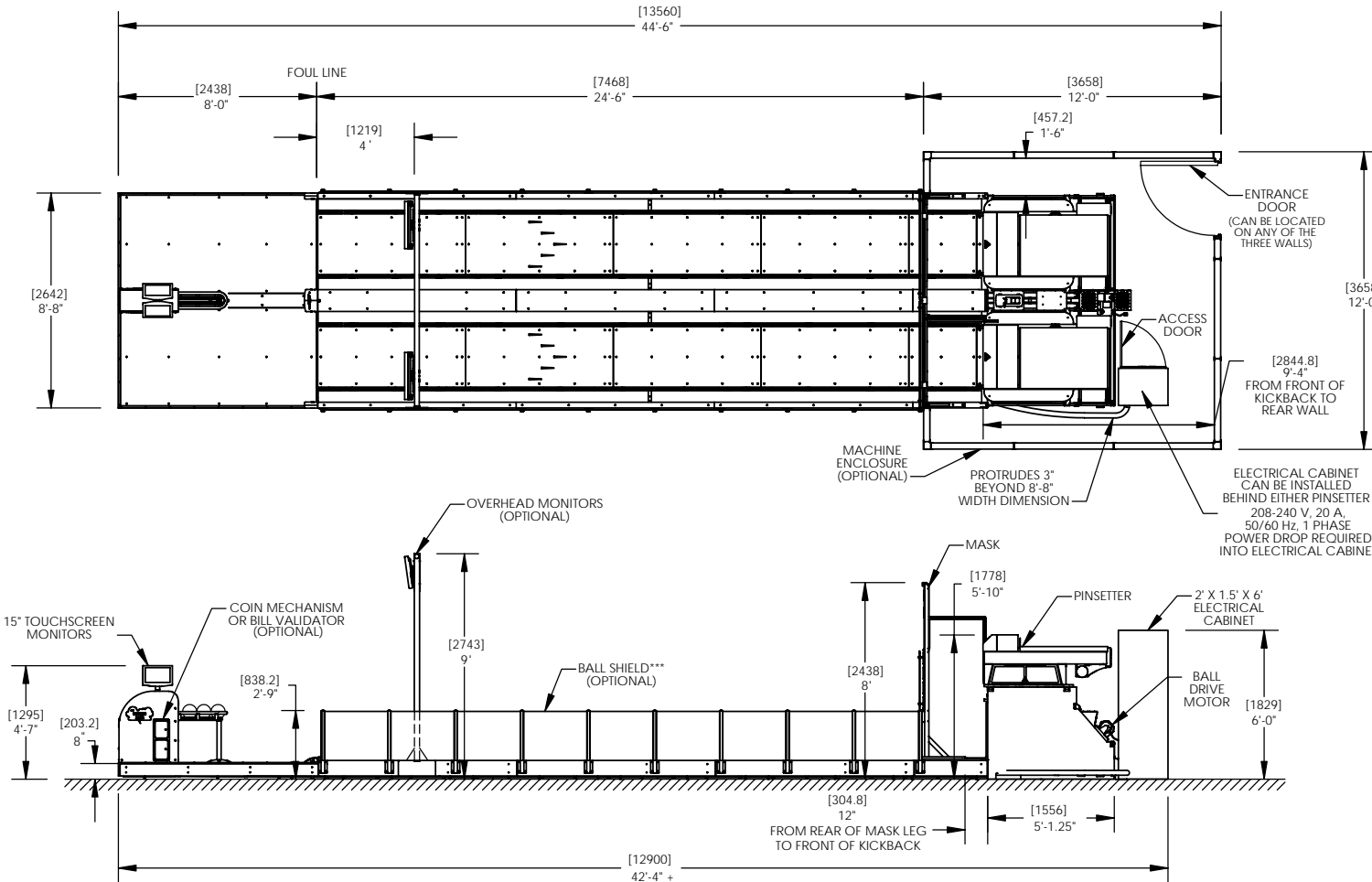
NUMBER OF UNITS	WIDTH** (without enclosure)	WIDTH (with enclosure)
1 (2 Lanes)	8'-8" (2642 mm)	12' (3658mm)
2 (4 Lanes)	17'-4" (5283 mm)	20'-7" (6274mm)
3 (6 Lanes)	26' (7925 mm)	29'-4" (8941mm)
4 (8 Lanes)	34'-8" (10570 mm)	37'-11" (11557mm)
5 (10 Lanes)	43'-4" (13210 mm)	46'-8" (14220mm)
6 (12 Lanes)	52' (15850 mm)	55'-2" (16815mm)
7 (14 Lanes)	60'-8" (18490 mm)	64' (19510mm)
8 (16 Lanes)	69'-4" (21130 mm)	72'-8" (22150mm)
9 (18 Lanes)	78' (23770 mm)	81'-4" (24790mm)
10 (20 Lanes)	86'-8" (26420 mm)	90' (27430mm)

\* Can bring equipment in through smaller doorways but some disassembly may be required

\*\* Dimensions do not include Ball Shield. Add 3' to 8'-8" width dimension shown if Ball Shield is installed on both sides of unit, 1.5" if installed on one side only.

\*\*\* Ball Shield is not a protective device. It is designed to contain properly delivered balls within the Thunder Bowl playing area.

+ Total length of unit can be reduced by 6' (1828.8 mm) to 36'-4" (11074.4 mm) if necessary



AMF reserves the right to change technical specifications without notice