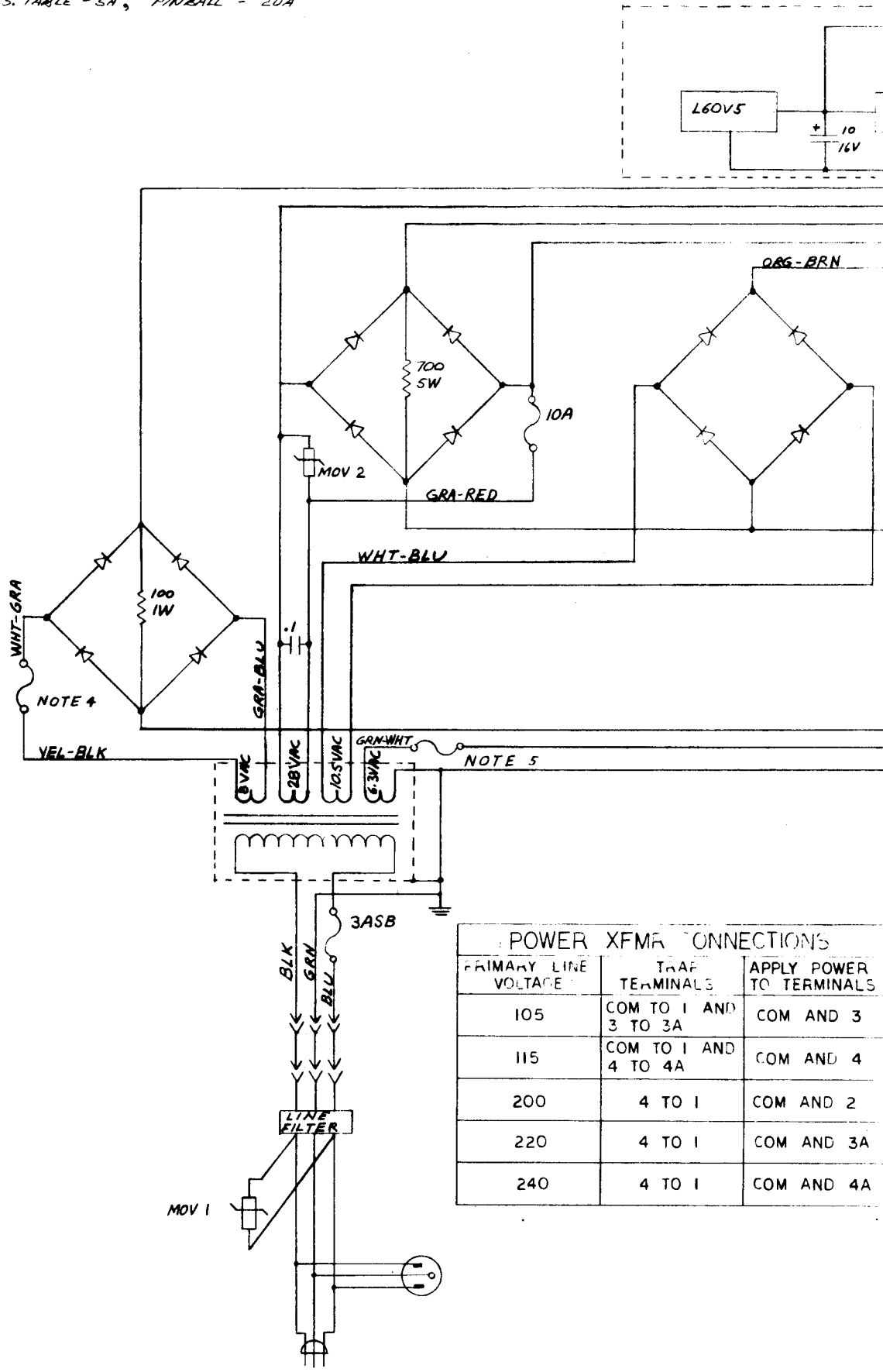


NOTES:

1. RECTIFIER BRIDGES ARE 25 AMP AND 200 VOLT PIV.
2. MOV 1 IS A V130LA10A FOR 120VAC AND A V250LA20A FOR 240 VAC LINE.
3. MOV 2 IS A V82ZA12.
4. TABLE - SA, PINBALL - 15A
5. TABLE - SA, PINBALL - 20A



POWER XFMR CONNECTIONS		
PRIMARY LINE VOLTAGE	TRAF. TERMINALS	APPLY POWER TO TERMINALS
105	COM TO 1 AND 3 TO 3A	COM AND 3
115	COM TO 1 AND 4 TO 4A	COM AND 4
200	4 TO 1	COM AND 2
220	4 TO 1	COM AND 3A
240	4 TO 1	COM AND 4A

