

4 H.P. MINI-BIKE

MINI-BIKE

ARTICLE NO.

ZKS-13970A



AGGIE 97

owner



"AGGIE 97"

MODEL ZKS 13970 A

RULES FOR SAFE OPERATION

1. Mini-bikes must not be operated in violation of any State, Local or Federal rules, laws or ordinances.
2. Only persons acquainted with the Rules of Safe Operation should be permitted to drive this mini-bike.
3. Be sure to familiarize yourself thoroughly with the operating controls and operating instructions before you drive this mini-bike.
4. Never drive this mini-bike on streets, alleys, or sidewalks – only on private property.
5. No minor or inexperienced driver should operate this mini-bike unless properly supervised and instructed as to proper operation safety rules.
6. Never run engine inside a building without opening all doors and windows.
7. To avoid injury or property damage, never fill the gasoline tank while the engine is hot or running. Wipe off any spilled gasoline before attempting to start engine.
8. Never try to start this mini-bike without having driver safely in position.
9. Never try to clean, adjust, or repair mini-bike while it is in motion.
10. Have fun but DRIVE SAFELY.

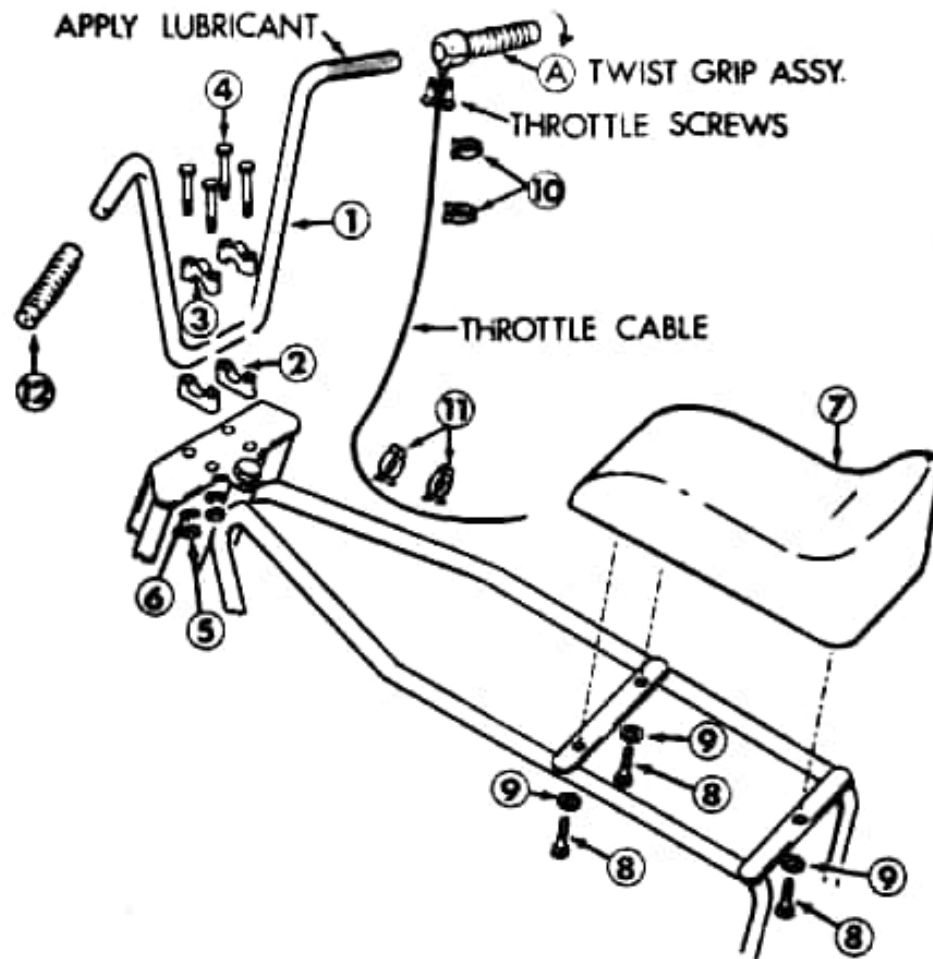
ASSUMPTION OF RISK

The owner or operator of the mini-bike assumes all risk incident to, arising out of the operation of the machine. Before operating the mini-bike, read all instructions governing the engine and mini-bike, and the "Rules for Safe Operation".

ASSEMBLY PARTS CHECK LIST

ITEM CODE NO.	DESCRIPTION	QUANTITY
(1)	Handle Bars	1
(2)	Lower Handle Bar Clamp	2
(3)	Upper Handle Bar Clamp	2
(4)	Cap Screw, 1/4" x 2" std.	4
(5)	Hex Nut, 1/4" std.	4
(6)	Lock Washer, 1/4"	4
(7)	Seat, Blue Metal Flake	1
(8)	Cap Screw, 1/4" x 3/4" std.	3
(9)	Flat Washer, 1/4"	3
(10)	Cable Clip, 7/8"	2
(11)	Cable Clip, 1"	2
(12)	Left Handle Grip	1

SET-UP INSTRUCTIONS



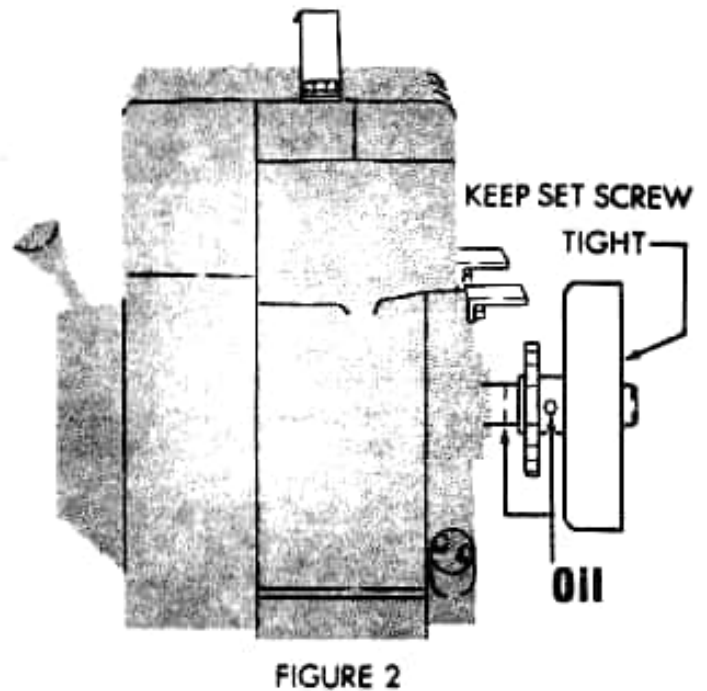
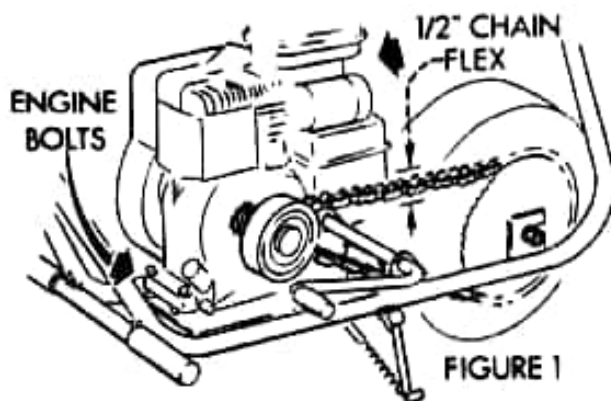
MODEL ZKS 13970 A

1. Attach the Seat (7) to the frame using the three 1/4" x 3/4" std. Cap Screws (8) and the three 1/4" Flat Washers (9). Tighten securely.
2. Attach the Handle Bars (1) to the Front Fork as shown in the above illustration using the four 1/4" x 2" std. Cap Screws (4), the four 1/4" Lock Washers (6), the four 1/4" std. Hex Nuts (5), the two Lower Handle Clamps (2), and the two Upper Handle Clamps (3). Before tightening the handle bars, sit on the mini-bike and adjust the handle bars to a comfortable position, then tighten securely.
3. Apply a light coating of vasoline or an equivalent lubricant to the right handle bar. Loosen the two screws in the Throttle Twist Grip (A) and slide onto the right handle bar. Retighten screws securely. Check the throttle by turning back towards rider and releasing—making sure the throttle returns to idle position. Now attach the throttle cable to the handle bar and frame using the two 7/8" Cable Clips (10) on the handle bar and the two 1" Cable Clips (11) on the frame.
4. Slide Handle Grip (12) on the left handle bar.
5. Read engine operating instructions before starting engine. ENGINE CONTAINS NO GAS OR OIL.

MODEL ZKS 13970 A

ADJUSTMENT AND MAINTENANCE INSTRUCTIONS

After you have ridden your Aggie Mini-Bike several hours, there are a few small adjustments that you will want to make. The instructions below are provided to assist you in caring for your Aggie Mini-Bike properly. Please read carefully.



ENGINE: Engine adjustments and/or maintenance should be performed in accordance with the engine manual.

CHAIN: To adjust chain, (see fig. 1) loosen the four engine bolts and slide the engine forward as needed and retighten the engine bolts. Chain should not be taut. Proper adjustment will allow the chain to flex about 1/2 inch at a point half way between the clutch and wheel sprocket. Oil or chain lubricant should be applied after every seven hours of operation. Volume and frequency should be sufficient to prevent discoloration of lubrication in the chain joints. Excessive oil may be removed by wiping with a clean dry cloth. (Excessive oil collects and holds harmful road grit, resulting in premature chain wear.)

CHASSIS: Check all nuts and bolts frequently, making sure they are tight.

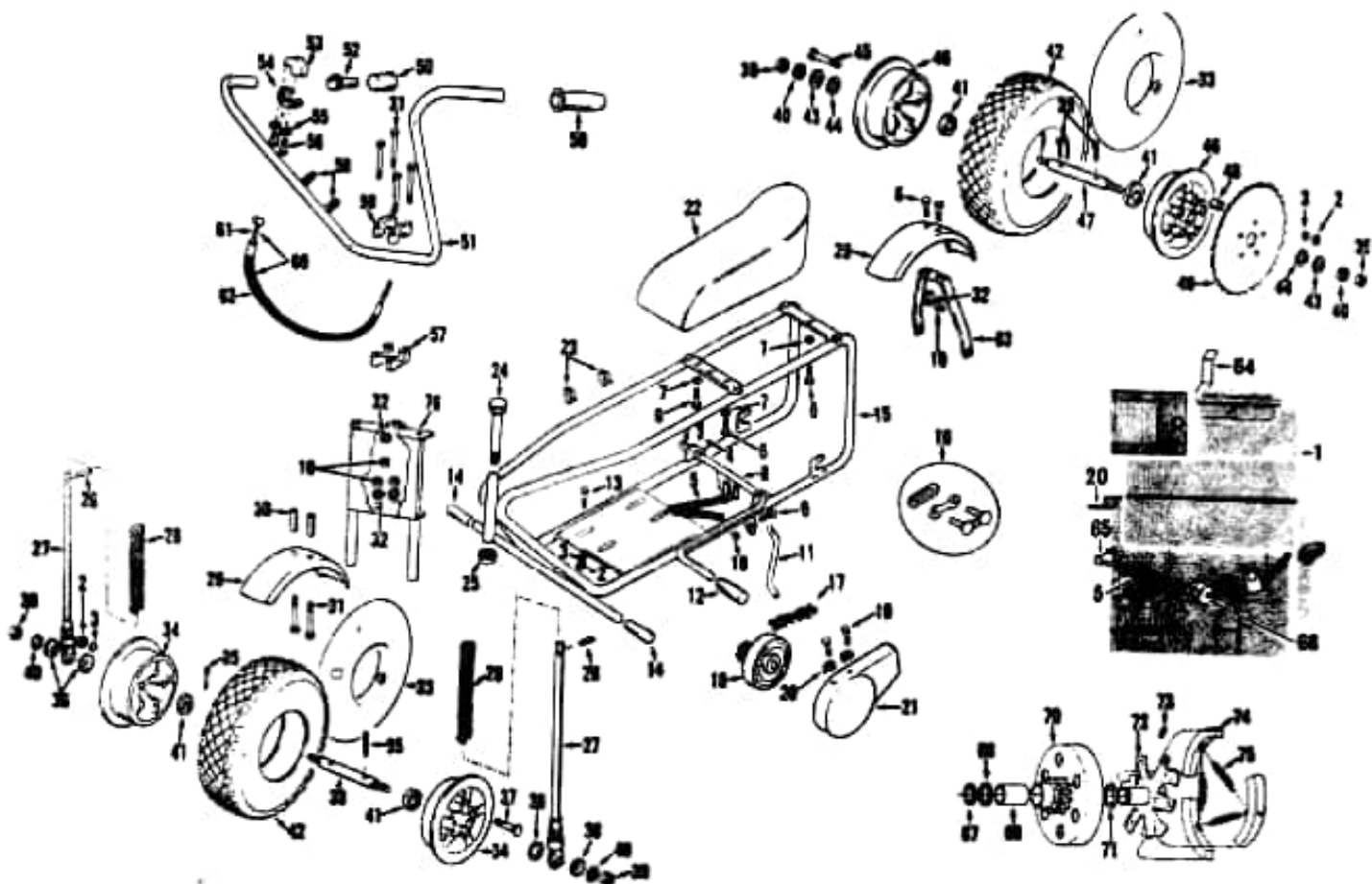
CLUTCH: Only a few drops of oil before each outing is required to keep the clutch bearing amply lubricated. This may be any good grade of light weight oil applied at a point (see fig. 2) where it will penetrate the bearing body. **CAUTION:** Do not operate the clutch with the chain too tight. Lack of proper chain adjustment and/or lubrication can cause excessive wear or metal fatigue and possible bearing fracture. Check the set screw holding the clutch to the engine crankshaft frequently, making sure it is tight.

STEERING: The pivot bolt which attaches the front fork assembly to the frame should be tight enough to remove any and all front end slap, but not so tight that it causes a stiffness when turning. Occasional lubrication at the pivot point will insure a smooth movement in steering.

THROTTLE CABLE: The throttle cable should be oiled occasionally to insure good operation. Use a light penetrating oil and apply internally to the cable housing by disconnecting one end.

THROTTLE TWIST GRIP: To insure free movement occasional lubrication is required. Remove the twist grip assembly from the handle bars by loosening the two screws in the adaptor ring. Apply a small amount of vaseline or an equivalent lubricant to the handle bar and replace the twist grip assembly.

TIRES: Tire air pressure should be maintained at 35 lbs.



PARTS LIST - MODEL ZKS 13970 A

KEY NO.	PART NO.	DESCRIPTION	QTY. USED	KEY NO.	PART NO.	DESCRIPTION	QTY. USED
1		Engine, Model 100202, Type	1	40	10188	Lock Washer, 1/2"	4
2	10192	Hex Nut, 5/16" std.	14	41	10200	Ball Bearing	4
3	10382	Lock Washer, 3/16"	14	42	10129	Knobby Tire, 4.10 x 3.50-6"	2
4	10299	Cotter Pin	2	43	10189	Flat Washer, 1/2"	2
5	10111	Return Spring, Throttle, Brakes, and Kick Stand	3	44	10222	Slotted Axle Washer	2
6	10144	Cap Screw, 1/4" x 3/4" std.	5	45	10384	Cap Screw, 5/16" x 4-1/2"	2
7	10145	Flat Washer, 1/4"	3	46	10386	Rear Wheel (set)	1
8	10165	Scraper Brake	1	47	10381	Rear Axle	1
9	10201	Cap Screw, 1/4" x 1" std.	1	48	10409	Spacer, Sprocket to wheel	5
10	10202	Hex Nut, 1/4" std.	9	49	10259	Rear Wheel Sprocket	1
11	10112	Kick Stand	1	50	10401	Blue Handle Grips (pair)	1
12	10177	Brake Foot Grip	1	51	10156	Handle Bars, 12" Rise	1
13	10191	Cap Screw, 5/16" x 1-1/2"	4	52	10207	Throttle Twist Grip Bar	1
14	10114	Foot Grip, 7/8"	2	53	10209	Upper Throttle Adaptor Ring	1
15	10100	Main Frame	1	54	10208	Lower Throttle Adaptor Ring	1
16	10378	#41 Connecting Link	1	55	10408	Lock Washer, 3/16"	2
17	10408	#41 Drive Chain	1	56	10123	Screw, Twist Grip	2
18	10393	Clutch Assy. #41 - 3/4 bore	1	57	10205	Lower Handle Bar Clamp	2
19	10107	Cap Screw, Self-tap	2	58	10126	Cable Clip, 7/8"	2
20	10101	Bracket, Chain Guard	2	59	10206	Upper Handle Bar Clamp	2
21	10216	Chain Guard	1	60	10124	Throttle Cable and Housing	1
22	10391	Blue Metal Flange Seal	1	61	10220	Throttle Inner Cable Only	1
23	10237	Cable Clip, 1"	2	62	10221	Throttle Outer Housing Only	1
24	10147	Fork Neck Bolt, 1/2" x 7" see	1	63	10411	Rear Fender Mounting Bracket	1
25	10254	Hex Lock Nut, 1/2" see	1	64	10178	Engine Stop Clip	1
26	10190	Drive Pin	2	65	10479	Bracket, Throttle Spring	1
27	10182	Fork Slider	2	66	10127	Wop Stop	1
28	10183	Fork Spring	2	67	10487	Snap Ring, 7/8"	1
29	10410	Chrome Fender	2	68	10486	Fiber Washer, 1/32"	1
30	10266	Spacer, Front Fender	2	69	10481	Clutch Bushing	1
31	10203	Cap Screw, 1/4" x 2" std.	6	70	10447	Clutch Drum & Sprocket	1
32	10176	Lock Washer, 1/4"	8	71	10483	Fiber Washer, 3/32"	1
33	10130	Inner Tube, 4.10 x 3.50-6"	2	72	10449	Clutch Shaft Hub and Backing Plate	1
34	10379	Front wheel (set)	1	73	10357	Set Screw, 1/4"-20 x 3/8"	1
35	10204	Cotter Pin - Axle	4	74	10459	Clutch Shoes - set of 3	1
36	10187	Concave Axle Washer	4	75	10458	Clutch Springs - set of 3	1
37	10383	Cap Screw, 5/16" x 3-1/4"	5	76	10181	Front Fork Assy.	1
38	10380	Front Axle	1		10339	Decal, "Aggie 97" (not shown)	1
39	10186	Hex Nut, 1/2" std.	4				

HOW TO OBTAIN SERVICE



The merchandise you have purchased from us has been carefully engineered and manufactured under Wards rigid quality standards and should give you satisfactory and dependable operation. However, like all mechanical merchandise, it may occasionally require adjustment or maintenance. Should you ever need technical assistance, please contact or write your nearest Wards Retail Store, Catalog Store or Catalog House.

provide the following:

1. Model, serial number and all of the other data shown on the model plate.
2. The date and the Wards branch from which you purchased your merchandise.
3. State briefly the trouble you are having.

HOW TO OBTAIN REPLACEMENT PARTS



Replacement Parts may be obtained from your Wards Retail Store, Catalog Store or Catalog House and will be made available at current prices. If requested, prices will be quoted in advance when not listed.

When requesting replacement parts, be sure to give the model and serial number which is shown on the model plate. Also give the part number and the name of the part as shown in the parts list.

If you order by mail, you will pay the transportation charges from the shipping point.