

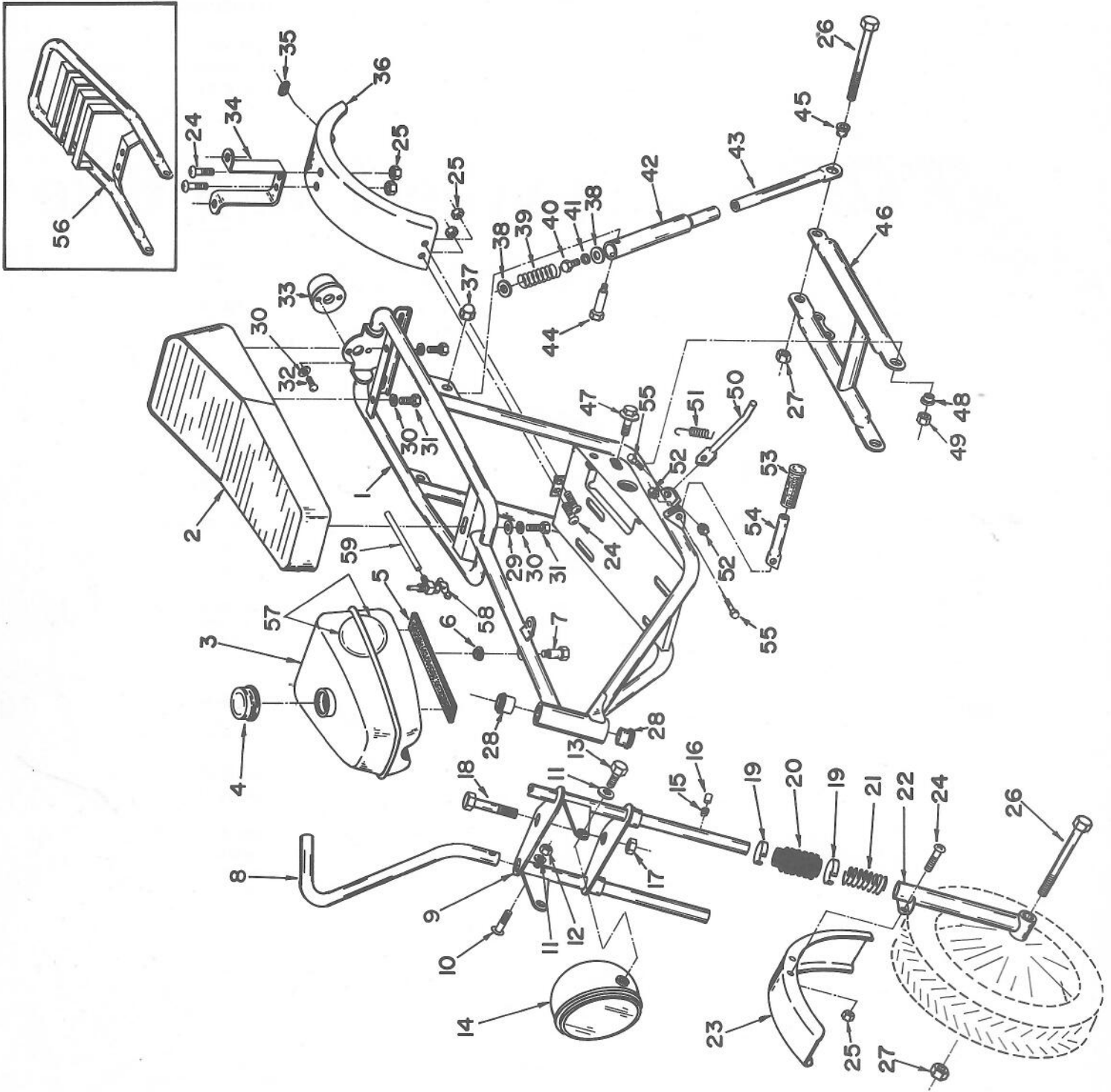
FOX Spoke Wheel Mini-Bike

Illustrated Parts List

- Trail Tramp
- Trail FX
- Condor
- Street Scamp
- Campus FX
- Spoiler

Fox Corporation, 1111 West Racine St.,
Janesville, Wis. 53545
(608) 752-9441



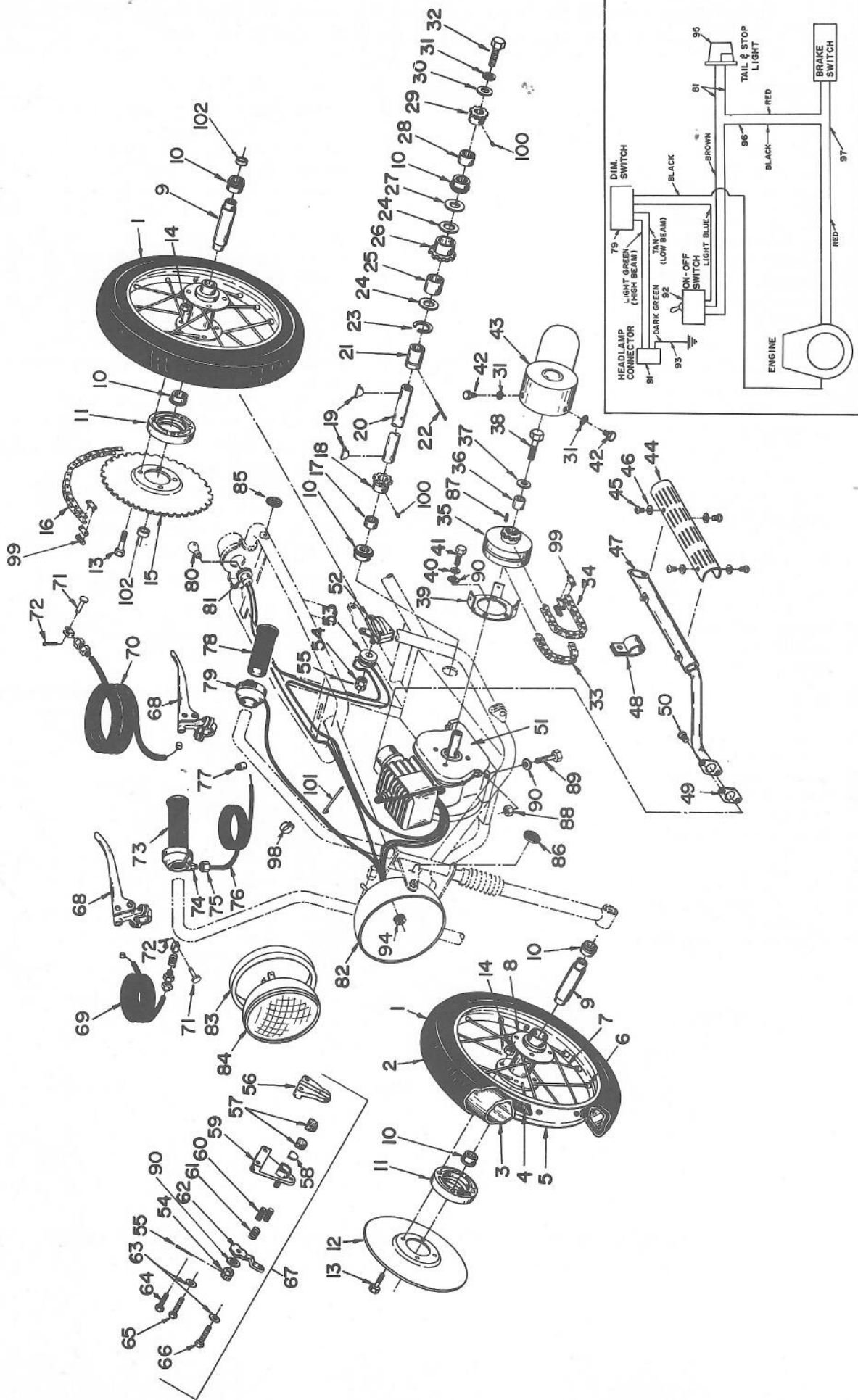


Street Scamp, Trail Tramp, Campus FX and Trail FX – Frame area

Street Scamp Model No. 1349 - Campus FX Model No. 1339 Parts List
Trail Tramp Model No. 1449 - Trail FX Model No. 1439

Item No.	Part No.	Description	Req'd
1	250-831	Frame Assembly	1
2	250-927	Seat	1
3	203-844	Fuel Tank	1
4	204-198	Cap, Fuel Tank - Street Scamp	1
	204-199	Cap, Fuel Tank - Campus FX	
	204-201	Cap, Fuel Tank - Trail Tramp	
	204-202	Cap, Fuel Tank - Trail FX	
5	203-929	Cushion, Fuel Tank	1
6	203-886	Grommet, 1/2" I.D. x 3/8" long	2
7	203-887	Shoulder Bolt, 3/8" Dia. W/ 1/4-20 THDS.	2
8	203-916	Handlebar Tube - Right Hand	1
	203-917	Handlebar Tube - Left Hand	1
9	203-855	Center Yoke Assembly	1
10	203-627	Dished Head Bolt, 5/16-24 x 1 1/2"	2
11	142-315	Lockwasher, 5/16" Internal	4
12	131-004	Nut, Hex 5/16-24	2
13	101-544	Screw, Hex Cap, 5/16-24 x 1/2"	2
14	203-760	Headlamp Shell Assembly	1
15	201-141	Retaining Pin Spring, 3/16" x 3/8" long	2
16	201-206	Retaining Pin, 3/16" x 3/8" long	2
17	135-014	Nut, Hex Lock, 5/8"-18	1
18	201-297	Kingpin Bolt, 5/8-18 x 6 1/4"	1
19	201-070	Rubber Boot Clamp	4
20	201-056	Rubber Boot	2
21	201-075	Spring, Fork Compression, 1" x 3"	2
22	203-874	Lower Arm Assembly-L.H.- Street Scamp	1
	203-875	Lower Arm Assembly-R.H. - Street Scamp	1
	203-874	Lower Arm Assembly - Campus FX	2
	203-959	Lower Arm Assembly-L.H. - Trail Tramp	1
	203-960	Lower Arm Assembly-R.H. - Trail Tramp	1
	203-959	Lower Arm Assembly - Trail FX	2
23	203-860	Front Fender - Street Scamp & Campus FX	1
	203-952	Front Fender - Trail Tramp & Trail Fx	1

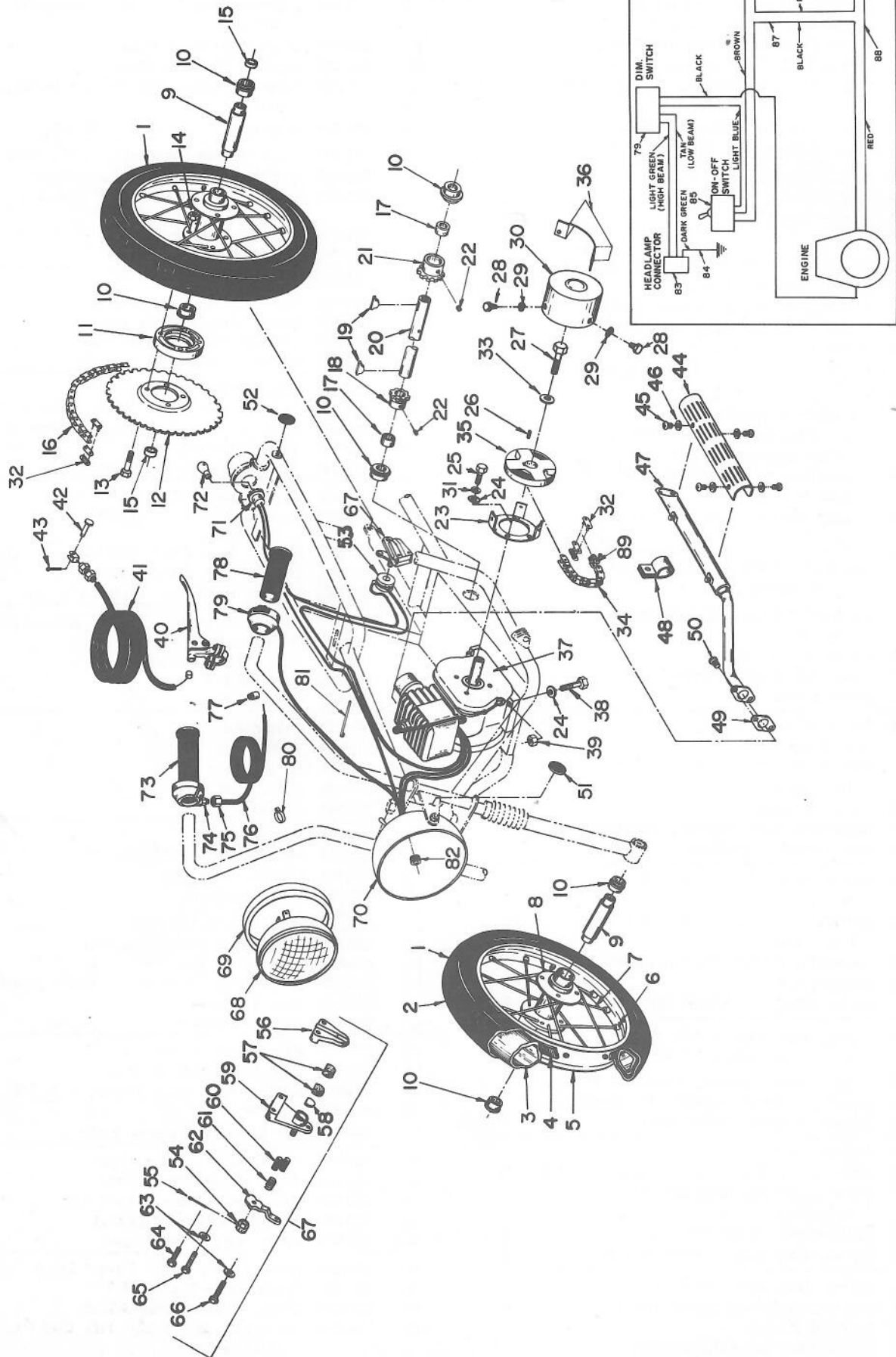
Item No.	Part No.	Description	Req'd
24	111-039	Screw, Phil. Truss HD. Mach., #10-32 x 3/8"	8
25	135-042	Nut, Hex Lock, #10-32	8
26	203-880	Screw, Hex Cap, 3/8-24 x 6 1/2"	2
27	135-006	Nut, Hex Lock, 5/16-24	2
28	200-068	Ball Bearing, 5/8"	2
29	141-002	Washer, 1/4"	1
30	142-324	Lockwasher, 1/4" Internal	5
31	101-509	Screw, Hex Cap, 1/4-20 x 1"	3
32	101-501	Screw, Hex Cap, 1/4-20 x 1/2"	2
33	203-751	Taillight Lens Assembly	1
34	204-007	Strap, Rear Fender Mounting	1
35	201-183	Rubber Bumper, License Plate	1
36	203-861	Rear Fender	1
37	135-505	Nut, Hex Lock Cap, 3/8-16	2
38	203-922	Washer, 17/64" I.D. x 1" O.D. x 14 Ga.	4
39	203-903	Spring, Rear Compression	2
40	101-501	Screw, Hex Cap, 1/4-20 x 1/2"	2
41	142-324	Lockwasher, 1/4" Internal	2
42	203-825	Shock Absorber Housing	2
43	203-823	Shock Absorber Extension Rod	2
44	203-831	Shoulder Bolt, 1/2 Dia W/ 3/8-16 THDS.	2
45	203-830	Spacer, Swing Arm Rear Pivot	2
46	203-826	Swing Arm Assembly	1
47	111-041	Screw, Flange Whiz-Lock, 3/8-16 x 3/4"	2
48	203-995	Bushing, Swing Arm Front Pivot	2
49	135-005	Nut, Hex Lock 3/8-16	2
50	203-902	Kickstand	1
51	203-908	Kickstand Spring	1
52	135-004	Nut, Hex Lock, 5/16-24	3
53	203-891	Peg Tread	2
54	203-889	Foot Peg	2
55	101-548	Screw, Hex Cap, 5/16-24 x 3/4"	3
56	203-974	Luggage Rack Assembly - Trails only	1
57	220-081	Decal, Fox Emblem, Gas Tank	2
58	203-905	Single Shut Off Valve W/Screen	1
59	200-432	Fuel Line, 3/16" I.D. Clear	BULK



Street Scamp Model No. 1349 - Trail Tramp Model No. 1449 Parts List

Item No.	Part No.	Description	Req'd
1	250-806	Tire & Tube Ass'y Complete W/ Hub-Rib Street Scamp	2
	250-807	Tire & Tube Ass'y Complete W/ Hub-Stud Trail Tramp	2
2	250-789	Tire, 2.50 x 10"-Rib - Street Scamp	2
	250-790	Tire, 2.50 x 10"-Stud - Trail Tramp	2
3	250-805	Tube, 2.50 x 10" W/Valve Stem Cap	2
4	203-604	Rubber Insert	2
5	203-605	Wheel Rim	2
6	203-607	Spoke Nipple	48
7	203-606	Spokes	48
8	203-608	Hub and Flange Assembly	2
9	203-611	Spacer, Wheel Bearing	2
10	200-185	Bearing, 5/8" I.D. Sealed Ball	6
11	203-817	Adapter, Brake Disc and Sprocket	2
12	203-818	Brake Disc, 6" Dia.	1
13	101-512	Screw, Hex Cap, 1/4-28 x 1 1/4"	8
14	135-002	Nut, Hex Lock, 1/4-28	8
15	203-819	Sprocket, ASA35-72 Tooth	1
16	201-347	Chain, Rear Drive, ASA35-122P. - Street Scamp	1
	204-029	Chain, Rear Drive, ASA35-120P. - Trail Tramp	1
17	203-921	Spacer, Butted Seam, 5/8" I.D. x 3/8" long	1
18	200-850	Sprocket, ASA35-15T., 5/8" Bore- Street Scamp	1
	200-056	Sprocket, ASA35-12T., 5/8" Bore- Trail Tramp	1
19	203-914	Woodruff Key #61	2
20	204-024	Jackshaft, 2-Speed Drive	1
21	204-021	Bearing Hub	1
22	163-002	Roll Pin, 3/16" x 1"	1
23	204-022	Snap Ring, 1" I.D.	1
24	204-023	Washer, 1" I.D. x 1 3/4" O.D. x .047 Thick	2
25	204-020	Clutch & Bearing Assembly	1
26	204-019	Sprocket & Hub Assembly, ASA35-30 - T.	1
	204-018	Two Speed - Complete	1
27	200-692	Washer, 5/8" I.D. x 1 1/8" O.D. x 14 Ga.	1
28	204-025	Spacer, Iron Porous, 5/8" I.D. x 7/16" long	1
29	200-850	Sprocket, ASA35-15Tooth, 5/8" Bore	1
30	141-002	Washer, 1/4"	1
31	142-324	Lockwasher, 1/4" Internal	4
32	101-504	Screw, Hex Cap, 1/4-28 x 5/8"	1
33	204-031	Chain, Low Speed, ASA35-56 Pitches	1
34	204-030	Chain, High Speed, ASA35-48 Pitches	1
35	203-993	Clutch, 2-Speed ASA35-3/4" Bore	1
36	204-010	Spacer, Engine Shaft-Clutch	1
37	141-004	Washer, 3/8"	1
38	102-098	Screw, Hex Cap Nylok, 3/8-24 x 1 1/2"	1
39	204-259	Chain Guard Mounting Bracket Assembly	1
40	142-315	Lockwasher, 5/16" Internal	3
41	101-546	Screw, Hex Cap, 5/16-24 x 5/8"	3
42	101-501	Screw, Hex Cap. 1/4-20 x 1/2"	3
43	204-005	Chain Guard-Two Speed Drive	1
44	203-968	Exhaust Guard	1
45	111-042	Screw, Phil. Truss HD. Mach, #10-32 x 1/4"	4
46	142-321	Lockwasher, #10 Internal	4

Item No.	Part No.	Description	Req'd
47	204-231	Exhaust Pipe Assembly, Non-Spark Arrestor	1
48	203-964	Clamp, Exhaust Pipe	1
49	204-229	Gasket, Exhaust Pipe	1
50	111-044	Screw, Fillister HD. Sems, 1/4-20 x 1/2"	2
51	250-833	Engine, Lauson 4 H.P. W/Alt.	1
52	204-078	Rear Brake Assembly, H-H Disc.	1
53	203-989	Brake Light Switch Assembly	1
	204-014	Washer, 21/64" I.D. x 3/4" O.D. x 14 Ga.	2
	204-015	Wire Connector Plates	2
	204-016	Plastic Cupped Washer	2
	204-017	Rubber Spacer	1
54	131-104	Nut, Hex Slotted, 5/16-24	2
55	161-019	Cotter Pin, 3/32" x 3/4"	2
56	203-589	Caliper Half Without Stud	2
57	203-591	Brake Pucks (Pair)	2
58	203-149	Disc, Brake Puck Spacer	2
59	203-588	Caliper Half With Stud - Front Brake	1
	204-082	Caliper Half With Stud - Rear Brake	1
60	203-146	Pin, Brake Actuating	4
61	203-147	Spring, Brake Arm Return	1
62	204-658	Arm, Brake Actuating	1
63	203-590	Spacer, 7/16" O.D. x 5/16" I.D. x 1/4" long	2
64	101-553	Screw, Hex Cap, 5/16"-18 x 1 1/4"	2
65	101-555	Screw, Hex Cap, 5/16"-18 x 1 1/2"	2
66	101-545	Screw, Hex Cap, 5/16"-18 x 5/8"	2
67	203-931	Brake Assembly, H-H Disc. - Front	1
68	201-250	Brake Lever, 7/8"	2
69	203-943	Front Brake Cable	1
70	203-942	Rear Brake Cable	1
71	203-812	Clevis Pin	2
72	161-019	Cotter Pin	2
73	201-249	Twist Grip, 7/8"	1
74	201-597	Union Body	1
75	201-598	Union Nut	1
76	203-941	Throttle Cable	1
77	200-049	Wire Clamp	1
78	201-251	Handle Grip, 7/8" Dummy	1
79	203-978	Switch, Dim and Ground	1
80	203-747	Bulb, Taillight	1
81	203-982	Taillight Socket Assembly	1
82	203-760	Headlamp Shell Assembly	1
83	203-940	Headlamp Rim	1
84	203-945	Headlamp, 12 Volt - 2 Beam Sealed	1
85	204-013	Red Reflector	2
86	204-012	Amber Reflector	2
87	200-057	Key, 3/16" x 3/16" x 5/8"	1
88	135-004	Nut, Hex Lock, 5/16-24	4
89	101-556	Screw, Hex Cap, 5/16-24 x 1 1/2"	4
90	141-003	Washer, 5/16"	8
91	203-981	Headlamp Connector Body	1
92	203-976	Headlight Toggle Switch	1
93	203-975	Wire, Headlamp Ground	1
94	550-040	Grommet, Rubber 3/8" I.D.	1
95	203-751	Taillight Lens Assembly	1
96	203-979	Wire, Main Power Lead	1
97	203-980	Wire, Brake Light Power Lead	1
98	201-237	Cable Tube Clamp, 7/8"	3
99	200-059	Chain Master Link, ASA35	3
100	118-004	Set Screw, Nylok Soc. HD. Cup Pt., 1/4-20 x 1/4"	2
101	203-733	Self-Locking Ty-Rap Ties	8
102	203-900	Spacer, Rear Axle	2

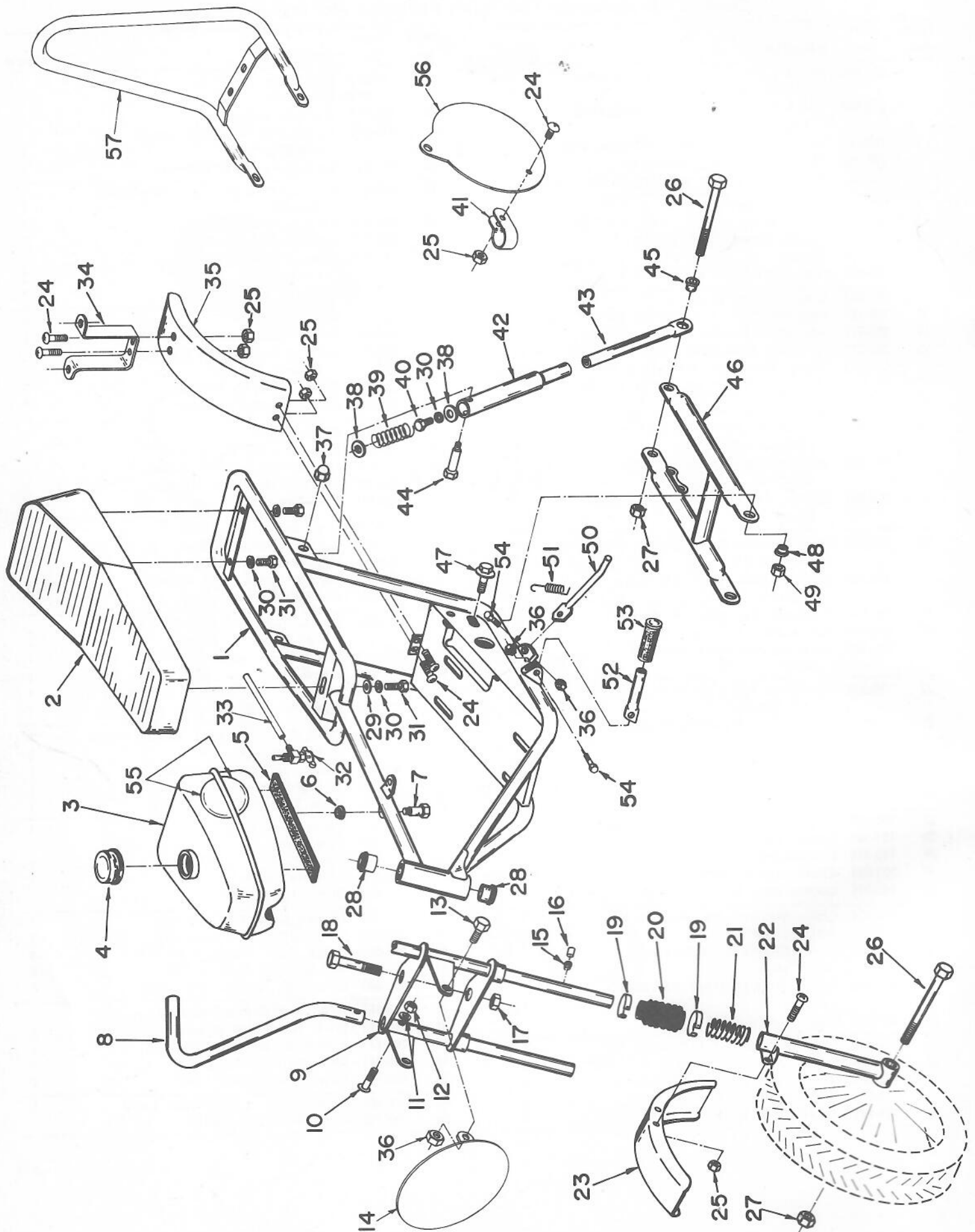


Campus FX and Trail FX – Drive Components

Campus FX Model No. 1339 - Trail FX Model No. 1439 Parts List

Item No.	Part No.	Description	Req'd
1	250-806	Tire & Tube Assembly with Hub-Rib-Campus FX	2
	250-807	Tire & Tube Assembly with Hub-Stud-Trail FX	
2	250-789	Tire 2.50 x 10" Rib - Campus FX	2
	250-790	Tire 2.50 x 10" Stud - Trail FX	
3	250-805	Tube, 2.50 x 10" with valve stem cap	2
4	203-604	Rubber Insert	2
5	203-605	Wheel Rim	2
6	203-607	Nipple, Spoke	48
7	203-606	Spokes	48
8	203-608	Hub and Flange Assembly	2
9	203-611	Spacer, Wheel Bearing	2
10	200-185	Bearings, 5/8" I.D. Sealed Ball	6
11	203-817	Adapter, Sprocket	1
12	203-819	Sprocket, ASA 35-72 Tooth	1
13	101-512	Screw, Hex Cap, 1/4-28 x 1 1/4"	4
14	135-002	Nut, Hex Lock, 1/4-28	4
15	203-900	Spacer, Rear Axle	2
16	201-347	Rear Drive Chain, ASA 35-122 P. - Campus FX	1
	204-029	Rear Drive Chain, ASA 35-120 P. - Trail FX	
17	203-921	Spacer, Butted Seam, 5/8" I.D. x 3/8" long	2
18	200-850	Sprocket, ASA 35-15T, 5/8" Bore - Campus FX	1
	200-056	Sprocket, ASA 35-12T, 5/8" Bore - Trail FX	
19	203-914	Woodruff Key #61	2
20	203-913	Jackshaft	1
21	204-261	Sprocket, ASA 35-20 Tooth, 5/8" Bore	1
22	118-004	Set Screw, Soc. HD. Cup Pt., 1/4-20 x 1/4" (Nylok)	2
23	204-259	Chain Guard Mounting Bracket Assembly	1
24	141-003	Washer, 5/16"	7
25	101-546	Screw, Hex Cap, 5/16-24 x 5/8"	3
26	200-057	Key, 3/16" x 3/16" x 5/8"	1
27	102-090	Screw, Hex Cap Nylok, 3/8-24 x 3/4"	1
28	101-501	Screw, Hex Cap, 1/4-20 x 1/2"	3
29	142-324	Lockwasher, 1/4" Internal	3
30	203-894	Chain Guard Cover	1
31	142-315	Lockwasher, 5/16" Internal	3
32	200-059	Chain Master Link, ASA 35	2
33	141-004	Washer, 3/8"	1
34	204-260	Chain, Engine Drive, ASA 35-50 Pitches	1
35	204-077	Clutch, Extended Hub, ASA 35-12 Tooth	1
36	204-176	Chain Guard Skirt	1
37	250-833	Engine, Lauson 4 H.P. With Alt.	1
38	101-556	Screw, Hex Cap, 5/16-24 x 1 1/2"	4
39	135-004	Nut, Hex Lock, 5/16-24	4
40	201-250	Brake Lever, 7/8"	1
41	203-942	Cable, Rear Brake	1

Item No.	Part No.	Description	Req'd
42	203-812	Clevis Pin	1
43	161-019	Cotter Pin	1
44	203-968	Exhaust Guard	1
45	111-042	Screw, Phil. Truss HD. Mach., #10-32 x 1/4"	4
46	142-321	Lockwasher, #10 Internal	4
47	204-231	Exhaust Pipe Assembly, Non-Spark Arrestor	1
48	203-964	Clamp, Exhaust Pipe	1
49	204-229	Gasket, Exhaust Pipe	1
50	111-044	Screw, Fillister HD. Sems, 1/4-20 x 1/2" long	2
51	204-012	Reflector - Amber	2
52	204-013	Reflector - Red	2
53	203-989	Brake Light Switch Assembly	1
	204-014	Washer, 21/64" I.D. x 3/4" O.D. x 14 Ga.	2
	204-015	Wire Connector Plates	2
	204-016	Plastic Cupped Washer	2
	204-017	Rubber Spacer	1
54	131-104	Nut, Hex Slotted, 5/16-24	1
55	161-019	Cotter Pin, 3/32" x 3/4"	1
56	203-589	Caliper Half Without Stud	1
57	203-591	Brake Pucks (Pair)	1
58	203-149	Disc, Brake Puck Spacer	1
59	204-082	Caliper Half With Stud	1
60	203-146	Pin, Brake Actuating	2
61	203-147	Spring, Brake Arm Return	1
62	204-659	Arm, Brake Actuating	1
63	203-590	Spacer, 7/16" O.D. x 5/16" I.D. x 1/4" long	2
64	101-553	Screw, Hex Cap, 5/16-18 x 1 1/4"	1
65	101-555	Screw, Hex Cap, 5/16-18 x 1 1/2"	1
66	101-545	Screw, Hex Cap, 5/16-18 x 5/8"	1
67	204-078	Rear Brake Assembly, H-H Disc	1
68	203-945	Headlamp, 12 Volt-2 Beam Sealed	1
69	203-940	Headlamp Rim	1
70	203-760	Headlamp Shell Assembly	1
71	203-982	Taillight Socket Assembly	1
72	203-747	Bulb, Taillight	1
73	201-249	Twist Grip, 7/8"	1
74	201-597	Union Body	1
75	201-598	Union Nut	1
76	203-941	Throttle Cable	1
77	200-049	Wire Clamp	1
78	201-251	Handle Grip, 7/8" Dummy	1
79	203-978	Switch, Dim And Ground	1
80	201-237	Cable Tube Clamp, 7/8"	3
81	203-733	Self Locking Ty-Rap Tie	8
82	550-040	Grommet, Rubber 3/8" I.D.	1
83	203-981	Headlamp Connector Body	1
84	203-975	Wire, Headlamp Ground	1
85	203-976	Toggle Switch, Headlight	1
86	203-751	Taillight Lens Assembly	1
87	203-979	Wire, Main Power Lead	1
88	203-980	Wire, Brake Light Power Lead	1
89	200-225	Chain Half Link, ASA 35	1

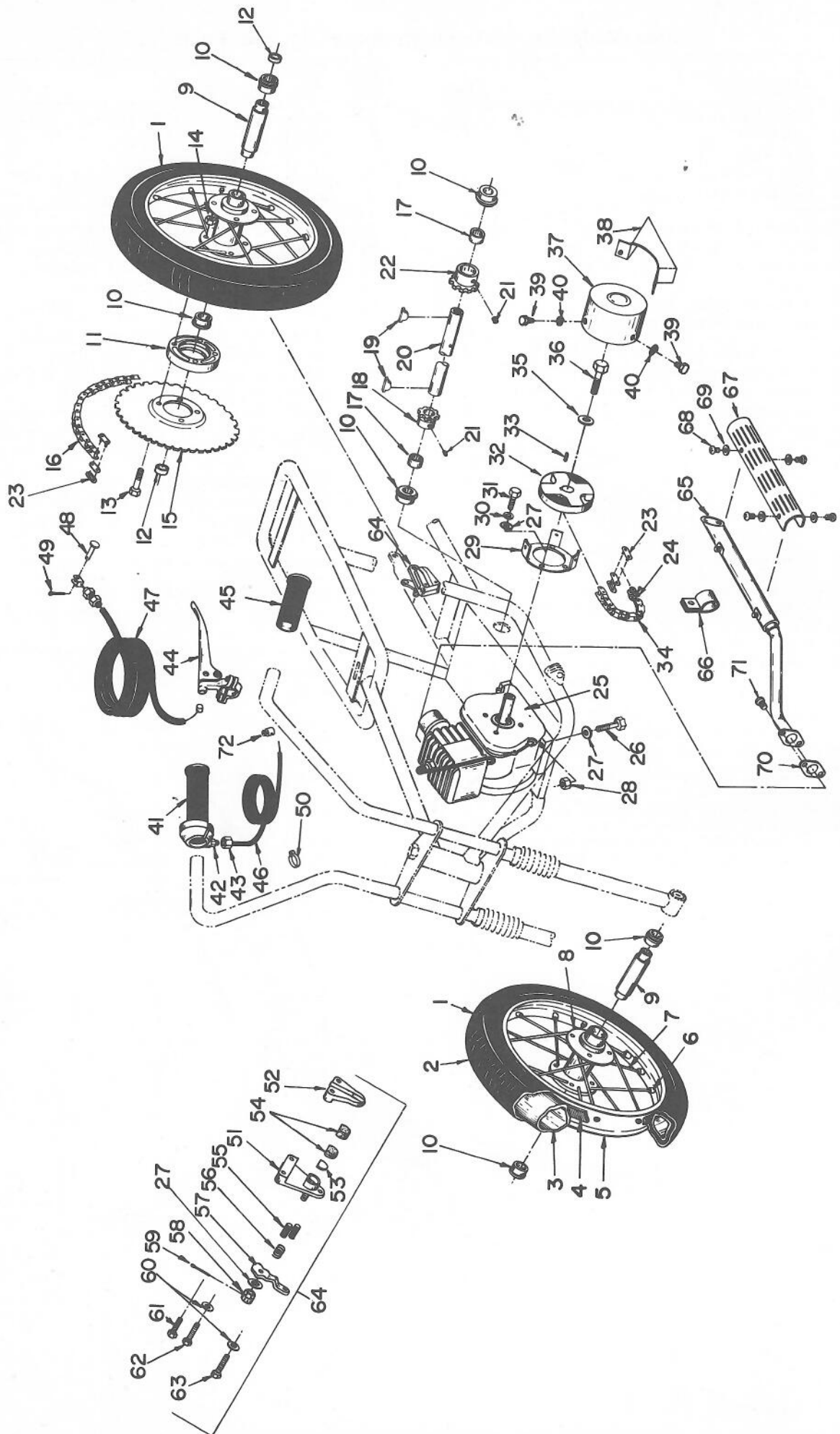


Condor and Spoiler - Frame area

Condor Model No. 1429 - Spoiler Model No. 1329 Parts List

Item No.	Part No.	Description	Req'd
1	250-864	Frame Assembly	1
2	250-928	Seat	1
3	203-844	Fuel Tank	1
4	204-203	Cap, Fuel Tank - Condor	1
	204-200	Cap, Fuel Tank - Spoiler	
5	203-929	Cushion, Fuel Tank	1
6	203-886	Grommet, 1/2" I.D. x 3/8" Long	2
7	203-887	Shoulder Bolt, 3/8" Dia. W/1/4-20 THDS.	2
8	203-916	Handlebar Tube, Right Hand	1
	203-917	Handlebar Tube, Left Hand	1
9	203-853	Center Yoke Assembly - Condor	1
	203-855	Center Yoke Assembly - Spoiler	
10	203-627	Dished Head Bolt, 5/16-24 x 1 1/2"	2
11	142-315	Lockwasher, 5/16" Internal	2
12	131-004	Hex Nut, 5/16-24	2
13	101-546	Screw, Hex Cap, 5/16-24 x 5/8" - Spoiler only	2
14	204-182	Front Number Plate - Spoiler only	1
15	201-141	Retaining Pin Spring, 3/16 x 3/8" long	2
16	201-206	Retaining Pin, 3/16 x 3/8" long	2
17	135-014	Nut, Hex Lock, 5/8-18	1
18	201-297	Kingpin Bolt, 5/8-18 x 6 1/4" long	1
19	201-070	Rubber Boot Clamp	4
20	201-056	Rubber Boot	2
21	201-075	Spring, Fork Compression 1" x 3"	2
22	203-959	Lower Arm Assembly - Condor	2
	204-185	Lower Arm Assembly - Spoiler	
23	203-952	Front Fender - Condor only	1
24	111-039	Fill Mach. Screw, #10-32 x 3/8" Condor	8
	111-039	Fill Mach. Screw, #10-32 x 3/8" Spoiler	6
25	135-042	Hex Lock Nut, #10-32 Condor	8
	135-042	Hex Lock Nut, #10-32 Spoiler	6
26	203-880	Hex Cap Screw, 3/8 - 24 x 6 1/2"	2

Item No.	Part No.	Description	Req'd
27	135-006	Hex Lock Nut, 3/8 - 24	2
28	200-068	5/8" Ball Bearing	2
29	141-002	Washer, 1/4"	1
30	142-324	Lockwasher, 1/4" Internal	5
31	101-509	Hex Cap Screw, 1/4 - 20 x 1"	3
32	203-905	Valve, Single Shut Off With Screen	1
33	200-432	Fuel Line, 3/16" I.D. Clear	6"
34	204-007	Strap, Rear Fender Mounting	1
35	204-179	Rear Fender - Chopped	1
36	135-004	Hex Lock Nut, 5/16-24 Condor	3
	135-004	Hex Lock Nut, 5/16-24 Spoiler	5
37	135-505	Nut, Hex Lock Cap, 3/8-16	2
38	203-922	Washer, 17/64 I.D. x 1" O.D. x 14 Ga.	4
39	203-903	Spring, Rear Compression	2
40	101-501	Screw, Hex Cap, 1/4-20 x 1/2"	2
41	204-184	Side Plate Mounting Clamp - Spoiler only	2
42	203-825	Shock Absorber Housing	2
43	203-823	Shock Absorber Extension Rod	2
44	203-831	Shoulder Bolt, 1/2" W/3/8-16 THDS.	2
45	203-830	Spacer, Swing Arm Rear Pivot	2
46	203-826	Swing Arm Assembly	1
47	111-041	Screw, Flange Whiz Lock, 3/8-16 x 3/4"	2
48	203-995	Bushing, Swing Arm Front Pivot	2
49	135-005	Nut, Hex Lock, 3/8-16	2
50	203-902	Kickstand	1
51	203-908	Kickstand Spring	1
52	203-889	Foot Peg	2
53	203-891	Foot Tread	2
54	101-548	Hex Cap Screw, 5/16-24 x 3/4"	2
55	220-081	Decal - Fox Emblem Gas Tank	2
56	204-183	Side Number Plate - Spoiler only	2
57	204-038	Rear Riser Bar - Spoiler only	1



Condor and Spoiler – Drive Components

Condor Model No. 1429 - Spoiler Model No. 1329 Parts List

Item No.	Part No.	Description	Req'd
1	250-807	Tire & Tube Assembly Complete With Hub-Stud	2
2	250-790	Tire, 2.50 x 10" Stud	2
3	250-805	Tube, 2.50 x 10" W/Valve Stem Cap	2
4	203-604	Rubber Insert	2
5	203-605	Wheel Rim	2
6	203-607	Spoke Nipple	48
7	203-606	Spokes	48
8	203-608	Hub & Flange Assembly	2
9	203-611	Wheel Bearing Spacer	2
10	200-185	5/8" Sealed Ball Bearing	6
11	203-817	Sprocket Adapter	1
12	203-900	Rear Axle Spacer	2
13	101-512	Hex Cap Screw, 1/4-28 x 1 1/4"	4
14	135-002	Nut, Hex Lock, 1/4-28	4
15	203-819	Sprocket ASA 35-72 Tooth	1
16	204-029	Rear Drive Chain, ASA35-120 Pitches - Condor	1
	201-347	Rear Drive Chain, ASA35-122 Pitches - Spoiler	1
17	203-921	Spacer, Butted Seam, 5/8 I.D. x 3/8"	2
18	200-056	Sprocket, ASA35-12T, 5/8" B. - Condor	1
	200-850	Sprocket, ASA35-15T, 5/8" B. - Spoiler	1
19	203-914	Woodruff Key #61	2
20	203-913	Jackshaft	1
21	118-004	Nylok Set Screw, 1/4-20 x 1/4"	2
22	204-261	Sprocket, ASA35-20T.-5/8" Bore	1
23	200-059	Chain Master Link - ASA35	2
24	200-225	Chain Half Link - ASA35	1
25	250-865	Engine, 4 H.P. Lauson Without Alt.	1
26	101-556	Screw, Hex Cap, 5/16-24 x 1 1/2"	4
27	141-003	Washer, 5/16"	8
28	135-004	Nut, Hex Lock, 5/16-24	4
29	204-259	Chain Guard Mtg. Bracket	1
30	142-315	Lockwasher, 5/16" Internal	3
31	101-546	Screw, Hex Cap, 5/16-24 x 5/8"	3
32	204-077	Clutch, Extended Hub, ASA35-12T.	1
33	200-057	Key, 3/16" x 3/16" x 5/8"	1
34	204-260	Drive Chain, ASA35-50 Pitches	1
35	141-004	Washer, 3/8"	1

Item No.	Part No.	Description	Req'd
36	102-090	Screw, Hex Cap Nylok, 3/8-24 x 3/4"	1
37	203-894	Chain Guard Cover	1
38	204-176	Chain Guard Skirt	1
39	101-501	Screw, Hex Cap, 1/4-20 x 1/2"	3
40	142-324	Lockwasher, 1/4" Internal	3
41	201-249	Twist Grip, 7/8" I.D.	1
42	201-597	Union Body	1
43	201-598	Union Nut	1
44	201-250	Brake Lever, 7/8"	1
45	201-251	Handle Grip, 7/8" Dummy	1
46	203-941	Throttle Cable	1
47	203-942	Brake Cable	1
48	203-812	Clevis Pin	1
49	161-019	Cotter Pin	1
50	201-237	Cable Tube Clamp	2
51	203-588	Caliper Half With Stud	1
52	203-589	Caliper Half Without Stud	1
53	203-149	Disc, Brake Puck Spacer	1
54	203-591	Brake Pucks (Pair)	1
55	203-146	Pin, Brake Actuating	2
56	203-147	Spring, Brake Arm Return	1
57	204-659	Arm, Brake Actuating	1
58	131-104	Nut, Hex Slotted, 5/16-24	1
59	161-019	Cotter Pin, 3/32 x 3/4"	1
60	203-590	Spacer, 7/16 O.D. x 5/16" I.D. x 1/4" long	2
61	101-545	Screw, Hex Cap, 5/16-18 x 5/8"	1
62	101-555	Screw, Hex Cap, 5/16-18 x 1 1/2"	1
63	101-553	Screw, Hex Cap, 5/16-18 x 1 1/4"	1
64	203-931	Brake Assembly - H & H Disc. - Complete	1
65	204-231	Exhaust Pipe Assembly-Non-Spark Arrestor	1
66	203-964	Clamp, Exhaust Pipe	1
67	203-968	Exhaust Guard	1
68	111-042	Screw, Phil. Truss HD. Mach., #10-32 x 1/4"	4
69	142-321	Lockwasher, #10, Internal	4
70	204-229	Exhaust Pipe Gasket	1
71	111-044	Screw, Fillister HD. Sems, 1/4-20 x 1/2"	2
72	200-049	Wire Clamp	1