

Dept. 28

Grants

**mini-bikes &
sport-cycles '72**



POWERFUL! DEPENDABLE! DARING! THE ACTION BIKES for '72!

MINI-BIKES & SPORT CYCLES

1972 and 1973 SALES FORECAST

Month	Advertising & Promotional Schedule	Estimated Sales	Actual Sales
JAN.	Store Promotion & Advertising		
FEB.	Store Promotion & Advertising		
MARCH	Store Promotion & Advertising		
APRIL	Store Promotion & Advertising		
MAY	Store Promotion & Advertising		
JUNE	6/15 — 6 BC Father's Day Sale (6542) 6/29 — 6 DC Firecracker Sale (6322)		
JULY	7/13 — 7 BC Summer Sizzler Sale (6542)		
AUG.	8/3 — 7 EC August Sale (6322) 8/24 — 8 BC School Sale Circular (6112)		
SEPT.	Store Promotion & Advertising		
OCT.	Store Promotion & Advertising		
NOV.	Store Promotion & Advertising		
DEC.	Store Promotion & Advertising		
TOTAL			

"THUNDERBOLT 200MC"

MODEL 6652



Grant's

"BANSHEE 125"

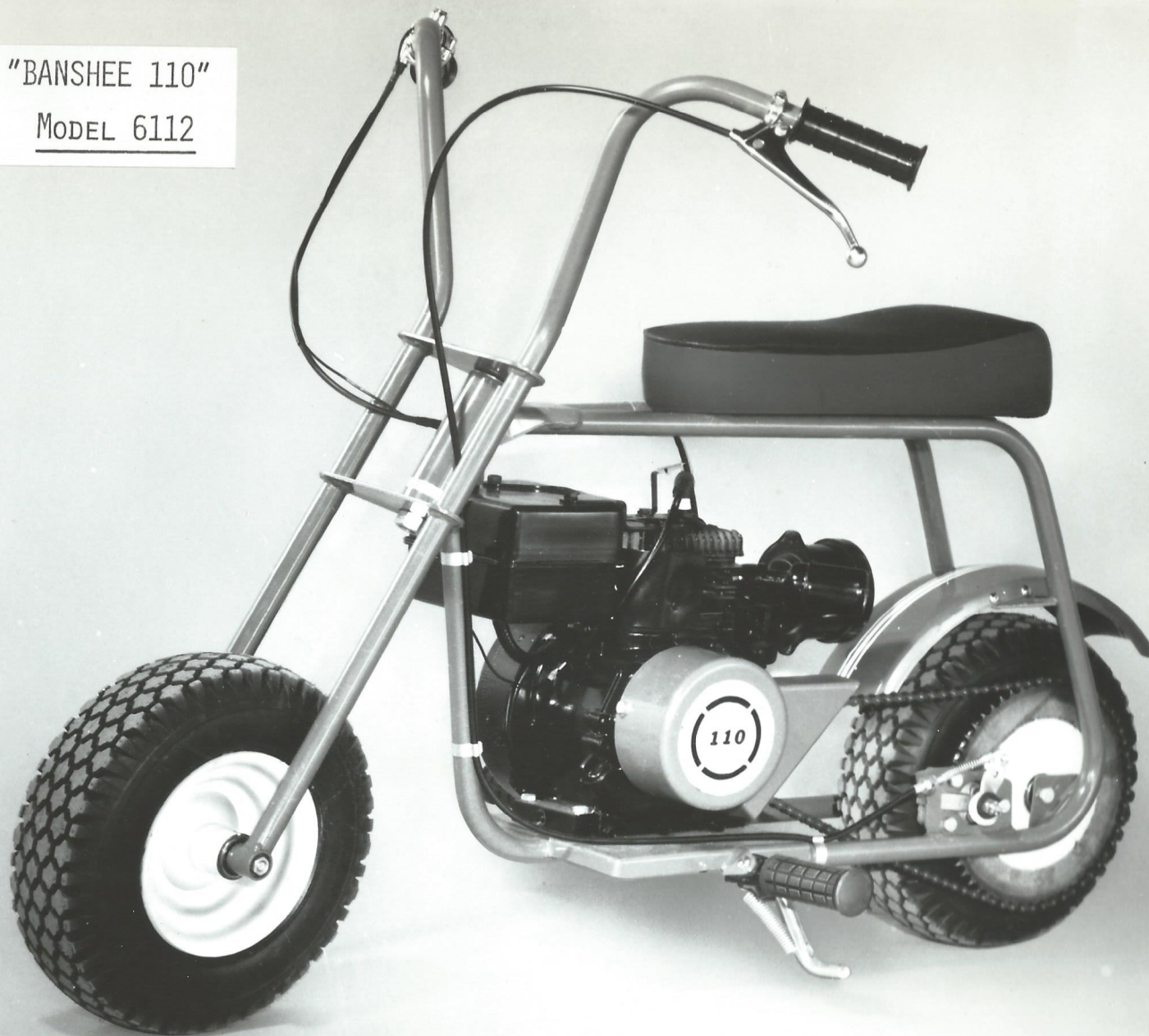
MODEL 6322



Grants

"BANSHEE 110"

MODEL 6112



Grants



Specifications Model No. 6272

Dynamark's safe, easy-to-ride three-wheeler gets you around where nothing else does — over sand dunes, snow covered trails, (with optional front ski attachment) or through the boonies. The front end boasts coil spring/leading link suspension . . . in the rear, individually disc-braked read w-i-d-e tires, and heavy shock absorbers

. . . and in-between, you ride comfortably on a deluxe high back seat with a sissy bar. The body is hard-to-hurt Fiberglass; the frame is a braced double loop of steel. And the 8 H.P. Chrysler engine is a brute for rugged dependability that rockets you at 55 M.P.H.! A hefty torque converter to get the benefit of all that power. Provides fun and transportation for everyone.

Engine Type	2 Stroke Loop Scavenged Air Cooled Single Cylinder
Starting System	Recoil
Displacement	134 CC
Bore x Stroke	64 mm x 41 mm
Compression Ratio	6.2:1
Max. H.P. @ RPM	8.0 @ 6500
Maximum Torque FT-LB @ RPM	6.42 @ 4500
Carburetor	Tillotson
Lubrication	Oil Mist
Ignition	Flywheel Magneto
Cut-off Switch	Yes
Exhaust	DeLuxe System
Transmission	Torque Converter w/Jackshaft

Final Drive Ratio	Variable
Chain	#420
Wheel Type	Steel
Tire Size	Fr — 15 x 6.00 x 6 Rr — 18 x 9.50 x 8
Brakes — front	No
Brakes — rear	Disc Brake On Each Rear Wheel
Front Suspension	Coil Spring/Leading Link
Rear Suspension	Shock Absorbers
Frame	Double Loop, Braced
Handlebars	Chrome
Fuel Tank	1.25 Gallon Remote w/Shut-off Valve & Filter

Oil Capacity	Gas/Oil 16:1 Mix
Seat	DeLuxe High Rise w/Sissy Bar 18" L., 28" H.
Fenders	Complete Fibre Glass Cover Including Fenders
Steering Crown	Double Ball Bearing
Controls	Twist Grip
Footrests	Integral Running Boards
Lighting System	No
Special Features	H.D. Differential, Engine Shock Mounts
Maximum Speed	55 M.P.H.
Fuel Consumption @ 80% Power	N.A.
Braking Distance FT. @ M.P.H.	N.A.
Climbing Ability	35°
Min. Turning Radius	48"
Length, overall	72"
Width, overall	42.5"
Height — to seat	23.5"
Ht. to handlebars	42"
Wheelbase	55"
Min. Ground Clear.	9" Body Clearance
Dry Weight	195 lbs.
Color	Sebring Yellow

Grants SAFETY HELMETS



2201 — 2001



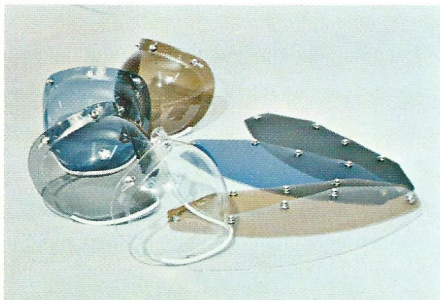
2107



2106

No.	Item	Size	Pack	Cost	Retail
	WHITE				
2201	Child's Safety Helmet	One Size	6	\$8.80	\$14.87
2001	Adult Safety Helmet	M-L	6	8.80	15.87
	BLUE METAL FLAKE				
2107	Adult Safety Helmet	M-L	6	9.35	16.87
	RED METAL FLAKE				
2106	Adult Safety Helmet	M-L	6	9.35	16.87
	Safety Helmet Display Center — No charge with order Helmets shipped prepaid on assorted order of 30 or more				

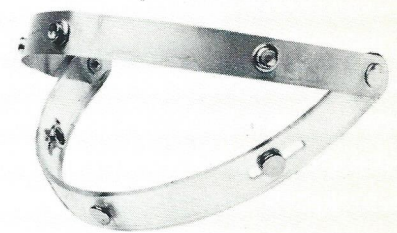
Grants ACCESSORIES



7110 — 7117



7320



7160

No.	Item	Pack	Cost	Retail
7110	Bubble Shield Clear	6	\$1.90	\$3.47
7117	Bubble Shield Blue	6	1.90	3.47
7320	Goggles 3 Lenses/Clear/Amber/Smoke	6	1.85	2.97
7160	Flip up Attachment — Universal	6	1.75	2.97

All PIP Helmets meet state and local requirements and Z-90 and AMA standards

ORDER: PIP 16960 Gale Ave. • City of Industry, Calif. 91744



scamp

For Off-Road Use Only

ENGINE

Type	Tecumseh 127 cc 4-cycle, Fan Cooled
Bore & Stroke	59 mm x 47 mm
Carburetion	Float Bowl, 12.7 mm
Air Filtration	Micronic
Ignition	Flywheel Magneto
Lubrication	Positive Oil Mist
Exhaust System	Approved Spark Arrestor Muffler
Starting System	Easy Action Recoil

TRANSMISSION

Type	Automatic Steel Shoe Centrifugal Clutch
Drive Ratio	5.4:1
Chain Type	#41 Motorcycle, w/Guard

FRAME

Type	Full Double Loop w/Gusseted Stress Points
------	---

Steering Head	Precision Double Ball Bearing
---------------	----------------------------------

SUSPENSION

Front	Rigid
-------	-------

Rear	Rigid
------	-------

BRAKES

Rear	Floating Caliper Disc
------	-----------------------

PERFORMANCE

Maximum Speed	25 MPH
---------------	--------

Fuel Consumption	91 @ 80% Power
------------------	----------------

Braking Distance	35 ft. @ 25 MPH
------------------	-----------------

Climbing Ability	20°
------------------	-----

DIMENSIONS

Wheels	6 in. Pressed Steel, Front and Rear
--------	--

Tires	4 10/3.50 x 6
-------	---------------

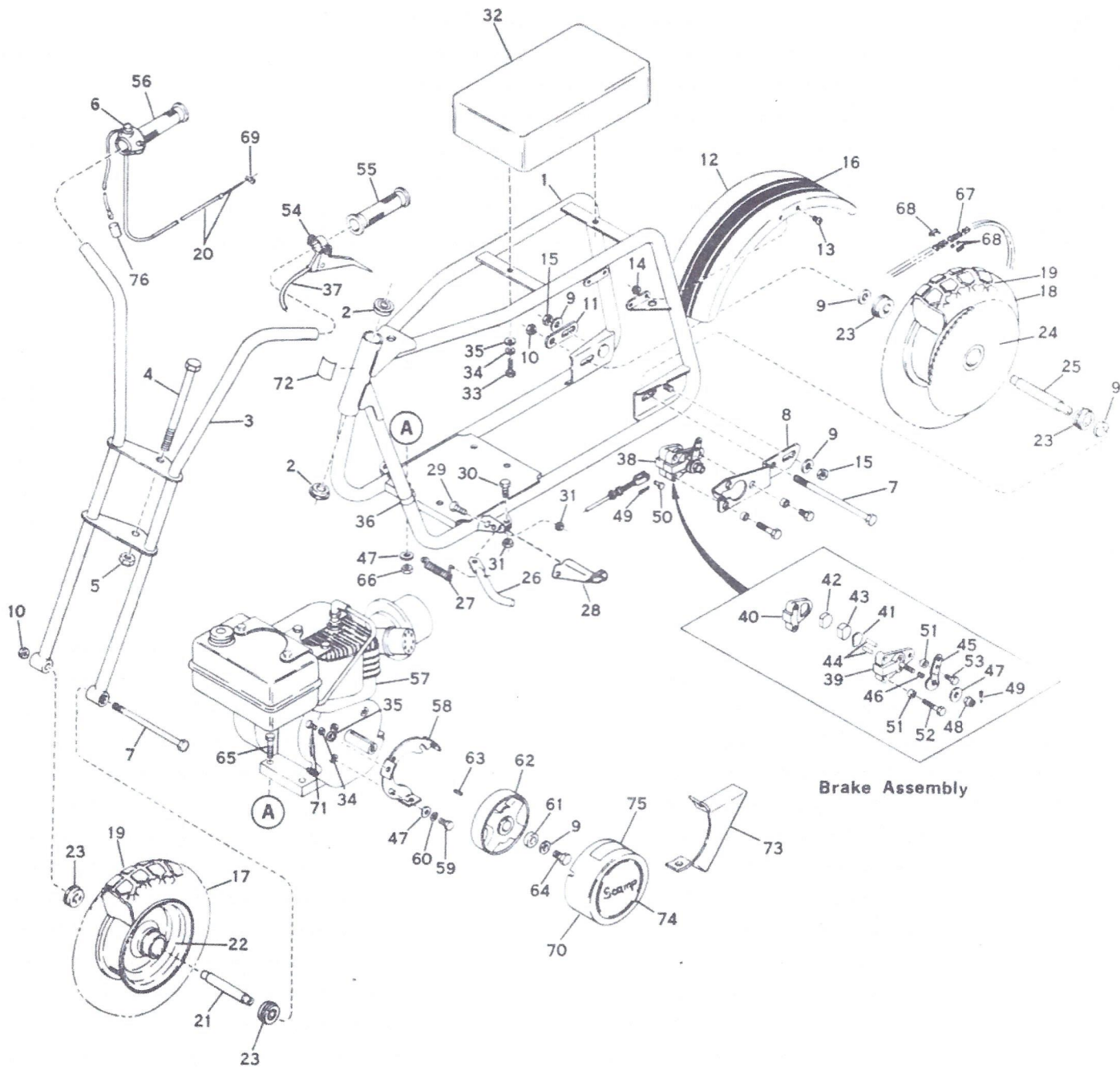
Wheelbase	34 in.
-----------	--------

Dry Weight	80 lbs.
Overall Length	46 in.
Seat Height	24.5 in.
Ground Clearance	3.5 in.
Fuel Capacity	5 gal.
Cut-Off Switch	Handlebar Mounted
Footpegs	30 Foldable
Fenders	Rear
Seat	High Density Foam
Kickstand	Swing Away w/Positive Lock

Fox Corporation warrants this Sportcycle for one full year, except drive train components (transmission, sprocket, chain), which carry a 90-day warranty. The engine and carburetor are warranted by the engine manufacturer.

Specifications subject to change without notice.





ORDER PARTS BY PART NUMBER, DESCRIPTION AND SERIAL NUMBER ONLY

SPECIFICATIONS SUBJECT TO CHANGE WITHOUT NOTICE OR OBLIGATION

SCAMP MODEL NO. 6114

ORDER PARTS BY PART NUMBER, DESCRIPTION AND SERIAL NUMBER ONLY

Item	Part No.	Description	Req'd.
1	251-006	Frame Assembly, Red	1
2	200-068	Ball Bearing, 5/8" I.D.	2
3	205-105	Handle Bar Assembly, Red	1
4	101-870	King Pin Bolt, 5/8 - 18 x 6-1/2"	1
5	135-014	Lock Nut, 5/8-18	1
6	205-518	Kill Button with wire	1
7	204-318	Bolt, Rear Axle, 3/8-24 x 7"	2
8	204-099	Bracket, Left hand brake	1
9	141-004	Washer, 3/8"	4
10	135-006	Lock Nut, 3/8-24	2
11	204-108	Plate, Axle Locking	1
12	20444	Rear Fender, Wide style, Red (Incl. Ref. #16)	1
13	111-039	Mach. Screw, Phil. Truss Hd., #10-32 x 3/8"	4
14	135-042	Lock Nut, #10-32	4
15	135-005	Lock Nut, 3/8-16	2
16	220-204	Tape, 3-strand narrow, White	18"
17	500-031	Front Wheel Assembly, (Incl. #19, 21, 22 & 23)	1
18	500-032	Rear Wheel Assembly, (Incl. #19, 23, 24 & 25)	1
19	250-899	Tire, Arden 12.5 x 6"	2
20	251-436	Cable, Throttle	1
21	203-611	Spacer, Front Wheel	1
22	251-468	Rim, Front Wheel, White	1
23	200-185	Bearing, Sealed 5/8" I.D.	4
24	251-467	Rim & Sprocket, Rear Wheel, White	1
25	204-314	Spacer, Rear Wheel	1
26	204-144	Kickstand, Plated	1
27	203-908	Spring, Kickstand	1
28	711-181	Foot Peg, Plated	2
29	101-556	Capscrew, 5/16-24 x 1-1/2"	2
30	101-548	Capscrew, 5/16-24 x 3/4"	1
31	135-004	Lock Nut, 5/16-24	3
32	251-232	Seat, Plain	1
33	101-509	Capscrew, 1/4-20 x 1"	2
34	142-324	Lockwasher, 1/4, Int.	2
35	141-002	Washer, 1/4"	2
36	201-237	Cable Clamp, 7/8" Tube	2
37	251-462	Cable, Rear Brake	1
38	204-658	Brake Assy., H&H Disc	1

Item	Part No.	Description	Req'd.
39	203-588	Casting, Cam Side with short stud	1
40	203-589	Casting, Carrier Side	1
41	203-149	Washer, Backup	1
42	204-794	Brake Puck, 1-4" thick	1
43	204-793	Brake Puck, 1-2" thick	1
44	203-146	Pin, Push	2
45	204-664	Lever, Cam	1
46	203-147	Spring, Compression	1
47	141-003	Washer, 5/16"	5
48	131-104	Slotted Nut, 5/16-24	1
49	161-019	Cotter Pin	2
50	203-812	Clevis Pin	1
51	203-590	Spacer, Bushing, 1/4" lg.	3
52	101-555	Capscrew, 5/16-18 x 1-1/2"	2
53	101-545	Capscrew, 5/16-18 x 5/8"	1
54	711-737	Lever, Brake, 7/8"	1
55	251-556	Dummy Grip, 7/8"	1
56	251-371	Twist Grip Assembly	1
*57	251-445	Engine, Lauson 3-1.2 H. P. with Tank & Muffler	1
58	204-838	Mounting Bracket, Chain Guard, Black	1
59	101-546	Capscrew, 5/16-24 x 5/8"	2
60	142-315	Lockwasher, 5/16" Int.	2
61	205-433	Clutch Spacer (If used)	1
62	205-420	Clutch, Single Speed, #41-10 tooth	1
63	200-057	Key, 3/16 x 3/16 x 5/8"	1
64	102-090	Capscrew, Nylok, 3/8-24 x 3/4"	1
65	101-556	Capscrew, 5/16-24 x 1-1/2"	4
66	135-004	Lock Nut, 5/16-24	4
67	205-421	Chain, ASA #41, 96 pitch with connecting link	1
68	205-365	Master Link, ASA No. 41	1
69	206-419	Cable Stop	1
70	203-894	Cover, Chain Guard, Red	1
71	101-502	Capscrew, 1/4-28 x 1-2"	3
72	220-371	Decal, Serial #A Series	1
73	204-176	Skirt, Chain Guard, Red	1
74	220-370	Decal, Chain Guard Cover (Scamp)	1
75	220-342	Decal, Caution	1
76	205-624	Cover, Kill Button Wire	1

* Engine and Carburetor Parts and Service are handled by your local Tecumseh, Lauson-Power Products Dealer. Refer to the Yellow Pages for your local Dealer.

SPECIFICATIONS SUBJECT TO CHANGE WITHOUT NOTICE OR OBLIGATION



sundowner

For Off-Road Use Only

ENGINE

Type	Fichtel-Sachs 47 cc, 2-cycle, air-cooled, w/alternator
Bore & Stroke	38 mm x 42 mm
Compression Ratio	7.1 (Regular Gas)
Carburetion	12 mm Slide Type
Air Filtration	Micronic
Ignition	High Voltage Magneto-Water Proofed
Lubrication	Gas/Oil Pre-Mix 25:1
Exhaust System	Tuned Expansion Chamber Muffler w/Swirl Type Spark Arrestor
Starting System	Easy-Action Recoil

TRANSMISSION

Type	Fully Automatic Clutch/2-Speed Automatic Transmission
Drive Ratios	4:1 - 2:1

Chain Type	#41 Motorcycle
Chain Adjuster	Cam Type
FRAME	
Type	Single Backbone, Double Cradle
Steering Head	Double Ball Bearing
SUSPENSION	
Front	Coil Spring, Friction Damped
Rear	Rigid
BRAKES	
Front	None
Rear	105 mm Drum
PERFORMANCE	
Maximum Speed	30 MPH
Fuel Consumption	100 MPG @ 25 MPH
Braking Distance	30 ft. from 25 MPH
Climbing Ability	30° w/100 lb. Rider
DIMENSIONS	
Wheels	10 in. High Tensile Steel, Front and Rear
Tires	3.00 x 10 High Traction Treads, Front and Rear

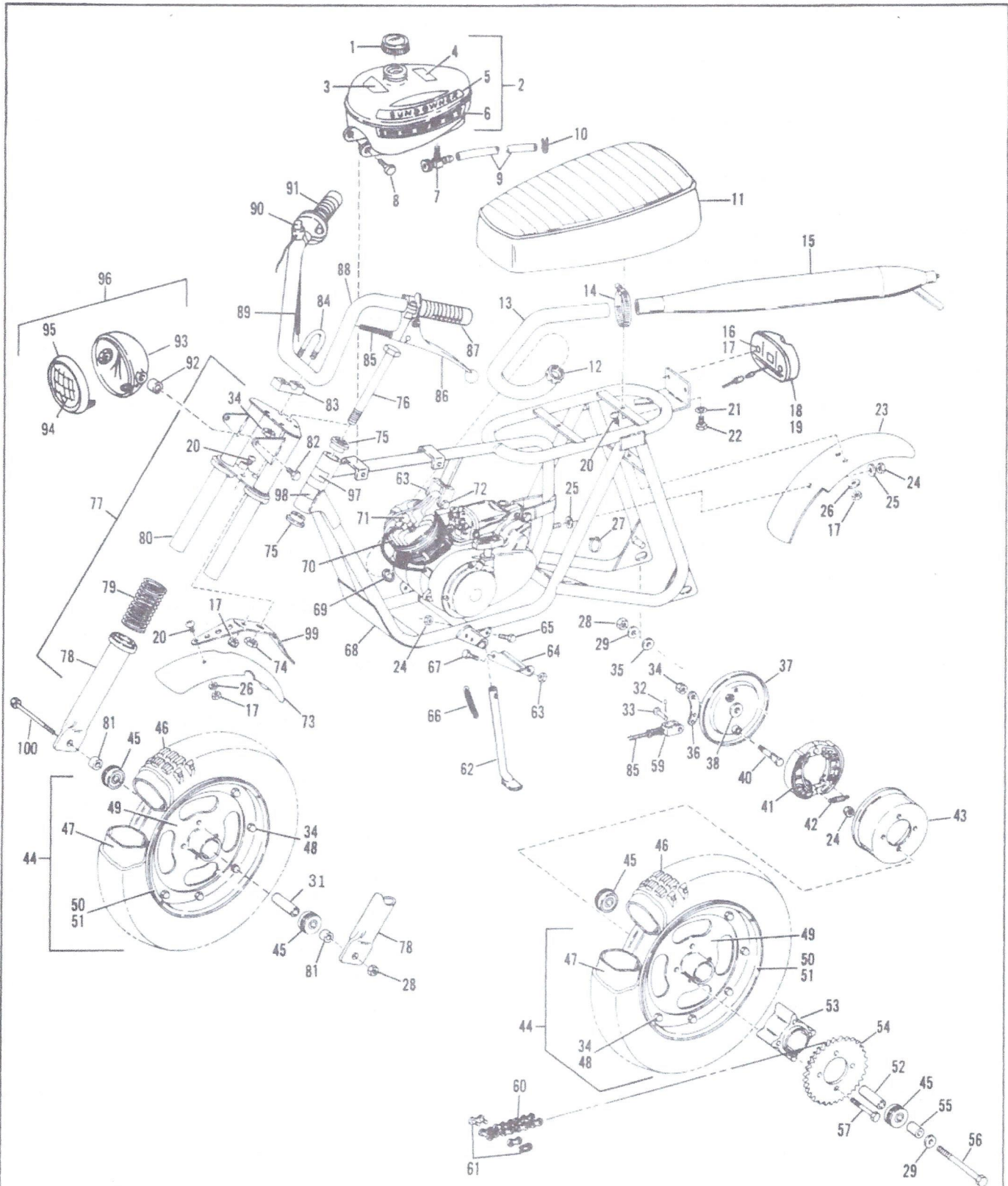
Wheelbase	39 in.
Dry Weight	92 lbs.
Overall Length	55 in.
Seat Height	27 in.
Ground Clearance	9 in.
Fuel Capacity	1 gal.
Cut-Off Switch	Handlebar Mounted
Handlebars	Chrome Fold-Down Type
Footpegs	30° Foldable
Fenders	Unbreakable ABS Plastic
Seat	High Density Molded Foam
Kickstand	Swing Away w/Positive Stop

SPECIAL FEATURE Enduro Lighting Package Available

Fox Corporation warrants this Sportcycle for one full year, except drive train components (transmission, sprocket, chain), which carry a 90-day warranty.

Specifications subject to change without notice.





ORDER PARTS BY PART NUMBER, DESCRIPTION AND SERIAL NUMBER ONLY
 SPECIFICATIONS SUBJECT TO CHANGE WITHOUT NOTICE OR OBLIGATION

SUNDOWNER MODEL NO. 6324 (Series C)

ORDER PARTS BY PART NUMBER, DESCRIPTION AND SERIAL NUMBER ONLY

ITEM	PART NO.	DESCRIPTION	REQ'D.	ITEM	PART NO.	DESCRIPTION	REQ'D.
1	20741	Frame Assembly (Incl. Item No. 2)	1	65	203-929	Cushion, Fuel Tank	1
2	200-068	Bearing, 5/8 I.D.	2	66	205-101	Fuel Cap	1
3	251-333	Seat	1	67	200-432	Fuel Line	1
4	101-505	Capscrew, 1/4-20 x 3/4	2	68	101-509	Capscrew, 1/4-20 x 1	2
5	142-324	Lockwasher, 1/4 Internal	4	69	206-923	Spacer	2
6	206-777	Rear Fender	1	70	203-886	Grommet	2
7	111-039	Machine Screw, No. 10-32 x 3/8	5	71	251-306	Exhaust Pipe	1
8	135-042	Lock Nut, No.10-32	5	72	251-307	Flange Nut	1
9	141-001	Washer, No. 10	4	73	251-308	Gasket, Exhaust Pipe	1
10	141-002	Washer, 1/4	8	74	251-309	Muffler	1
11	135-001	Lock Nut, 1/4	3	75	251-310	Clamp	1
12	20522	Kickstand	1	76	220-372	Decal, Serial Number	1
13	203-908	Spring, Kickstand	1	77	220-316	Decal "OFF ROAD USE"	1
14	101-552	Capscrew, 5/16-24 x 1	1	78	20745	Foot Peg	2
15	135-004	Lock Nut, 5/16-24	6	79	101-556	Capscrew, 5/16-24 x 1-1/2	2
*16	251-298	Engine, 50 CC Sachs	1	80	251-345	Front Wheel Assembly (Includes Item Nos. 81 thru 83, 88, 91 and 95)	1
17	101-564	Capscrew, 5/16-24 x 2-1/2	3	81	251-341	Tire, 3.25 x 10"	2
18	20753	Adjuster Cam, R.H., 5/8	1	82	251-302	Tube, 3.25 x 10"	2
19	20754	Adjuster Cam, L.H., 5/8	1	83	203-604	Rim Strip	2
20	207-062	Chain, No. 41-82 pitches	1	84	207-057	Spacer, R. H., Rear Axle	1
21	205-702	Master Link, No. 420-82 pitch	1	85	207-058	Spacer, L. H., Rear Axle	1
22	500-080	Front Fender Assembly (Incl. Item Nos. 7, 8, 9, 23 and 24)	1	86	251-382	Sprocket, No. 41-30 teeth	1
23	20759	Bracket, Front Fender	1	87	135-614	Nut, 5/8-18	4
24	207-788	Front Fender	1	88	251-342	Front Axle, 5/8-18 x 8	1
25	251-415	Spark Plug	1		251-343	Rear Axle, 5/8-18 x 9-1/2	1
26	207-055	Spacer, R.H., Front Axle	1	89	101-547	Capscrew, 5/16-18 x 3/4	3
27	207-056	Spacer, L.H., Front Axle	1	90	142-315	Lockwasher, 5/16 Internal	3
28	251-344	Front Fork Assembly (Incl. Item Nos. 29 thru 40)	1	91	251-346-1	Front Wheel and Hub Assembly (Incl. Item Nos. 92 thru 94)	1
29	251-344-1	Handle Bar, L. H.	1		251-339-1	Rear Wheel and Hub Assembly (Incl. Item Nos. 92 thru 94)	1
30	251-344-2	Handle Bar, R. H.	1	92	251-346-5	Front Bearing, Sealed Ball	2
31	251-344-3	Screw, Handle Bar Mount	2		251-339-5	Rear Bearing, Sealed Ball	2
32	251-344-4	Yoke Plate, Top	1	93	251-346-7	Spoke, Front Wheel	24
33	251-344-5	Yoke Assembly, Center	1		251-339-7	Spoke, Rear Wheel	24
34	251-344-6	Capscrew, 9mm - 1 tmm x 25 mm	2	94	251-346-6	Nipple, Front Wheel Spoke	24
35	251-344-7	Washer, 9mm	2		251-339-6	Nipple, Rear Wheel Spoke	24
36	251-344-8	Spring, Front Fork	2	95	251-340	Brake Assembly (Includes Item Nos. 96 thru 103)	2
37	251-344-9	Sheath, Spring Guide	2	96	251-340-1	Back Plate	1
38	251-344-10	Fork Arm Assembly, Brake Side	1	97	251-340-8	Pivot Pin	1
39	251-344-11	Boot	2	98	251-340-2	Shoe (pair)	1
40	251-344-12	Fork Arm Assembly	1	99	251-340-3	Spring	2
41	205-689	Brake Adjustment Screw	1	100	251-340-4	Arm, Brake Actuating	1
42	251-365	Lighting Kit (Optional) Includes Item Nos. 106 thru 119	1	101	251-340-6	Washer	1
43	205-690	Nut, 6 mm	2	102	251-340-5	Bolt, 6 mm - 1 tpm x 25 mm	1
44	142-326	Lockwasher, 5/8 Internal	2	103	251-340-7	Nut, 6 mm - 1 tpm	1
45	20756	Number Plate	1	104	500-086	Rear Wheel Assembly (Includes Item Nos. 81 thru 83 and 105)	1
46	101-501	Capscrew, 1/4-20 x 1/2	2	105	251-338	Rear Wheel with Brake (Includes Item Nos. 86, 88 thru 91 & 95)	1
47	203-426	Kingpin Bolt, 5/8-18 x 8	1	106	251-315	Head Light Assembly with Key Switch (Incl. Item Nos. 107 thru 111 and 119)	1
48	251-403	Cable Stop	1	107	251-315-1	Shell, Head Light	1
49	135-014	Lock Nut, 5/8-18	1	108	251-315-2	Rim, Head Light	1
50	206-063	Spacer, Lower Fork	1	109	251-315-5	Lens, Head Light	1
51	103-003	Capscrew, 6 mm - 1 p x 15 mm	2	110	251-315-7	Keys (pair)	1
52	251-423	Kill Button Replacement	1	111	251-315-8	Socket, Bulb with Wire	1
53	251-321	Twist Grip Assembly with Kill Button	1	112	207-067	Wire Group	1
54	251-322	Throttle Wire and Cable	1	113	251-311	Tail Light (Incl. Item No. 114)	1
55	206-154	Dummy Grip	1	114	251-314	Bulb, 12 Volt - 25 w	1
56	201-250	Brake Lever	1	115	200-962	Wire Nut, Type 71B	4
57	206-157	Cable, Rear Brake	1	116	101-970	Capscrew, No. 10-32 x 3/4	2
58	203-733	Ty-rap, Self Locking	7	117	135-042	Lock Nut, No. 10-32	2
59	500-074	Fuel Tank Assembly (Incl. Item Nos. 61 thru 63 and 65)	1	118	203-733	Ty-rap, Self Locking	2
60	220-360	Decal, FOX Paw	1	119	251-257	Bulb, Head Light 12 v - 25 / 25	1
61	220-357	Decal, Sundowner, Top	1				
62	220-358	Decal, Bottom	1				
63	220-361	Decal, Fuel Mix	1				
64	251-347	Valve, Single Shut-off	1				

*REFER TO YOUR OPERATORS MANUAL FOR THE LISTING OF AUTHORIZED SACHS SERVICE CENTERS OR DISTRIBUTORS. CONTACT THE DISTRIBUTOR IN YOUR AREA FOR THE NAME AND ADDRESS OF THE NEAREST DEALER FOR PARTS AND SERVICE ON YOUR ENGINE.

SPECIFICATIONS SUBJECT TO CHANGE WITHOUT NOTICE OR OBLIGATION



tracker

For Street or Off-Road Use

ENGINE

Type	Tecumseh 133 cc. AH617MB 2 Cycle, Forced Air Cooled w/Alternator
Bore & Stroke	62 mm x 44 mm
Carburetion	Diaphragm Pump
Air Filtration	Micronic
Ignition	High Voltage Magneto
BHP @ RPM	6 @ 6000
Ft. Lbs. Torque	5.5 @ 3500
Lubrication	Gas/Oil Pre-Mix, 25:1
Exhaust System	Tuned Expansion Chamber with Silencer/Stinger
Starting System	Easy-Action Recoil
TRANSMISSION	
Type	Automatic Variable Speed Torque Sensing Drive
Drive Ratios (Overall)	24:1 - 8:1
Chain Type	#41 Motorcycle
Chain Adjuster	Cam Type
FRAME	
Type	Double Loop

Steering Head	Double Ball Bearing
Swing Arm	Permanently Lubricated Radial Bushings
SUSPENSION	
Front	Hydraulically Damped Telescopic Forks
Rear	Oil Damped Spring Over Shock
BRAKES	
Front & Rear	105 mm Drum
PERFORMANCE	
Maximum Speed	45 MPH
Fuel Consumption	90 MPG @ 80% Power
Braking Distance	35 ft. from 30 MPH
Climbing Ability	30
DIMENSIONS	
Wheels	16 in. High Tensile Steel, Front and Rear
Tires	2.75 x 16 Universal Dual-Purpose, Front and Rear
Wheelbase	47.5 in.
Dry Weight	132 lbs.
Overall Length	69 in.
Seat Height	29 in.
Ground Clearance	8 1/4 in.
Fuel Capacity	1.5 gal.
Cut-Off Switch	Handlebar Mounted
Handlebars	Chromed Motocross Braced

Instruments	Speedometer/Odometer
Lights	Sealed 2-Beam Front, Tail and Brake Lamp Rear
Horn	Pushbutton Type
Fenders	Preston Petty Muder Unbreakable Plastic.
Foot Pegs	30° Foldable
Seat	High Density Molded Foam
Kickstand	Swing Away w/Positive Lock

SPECIAL FEATURES

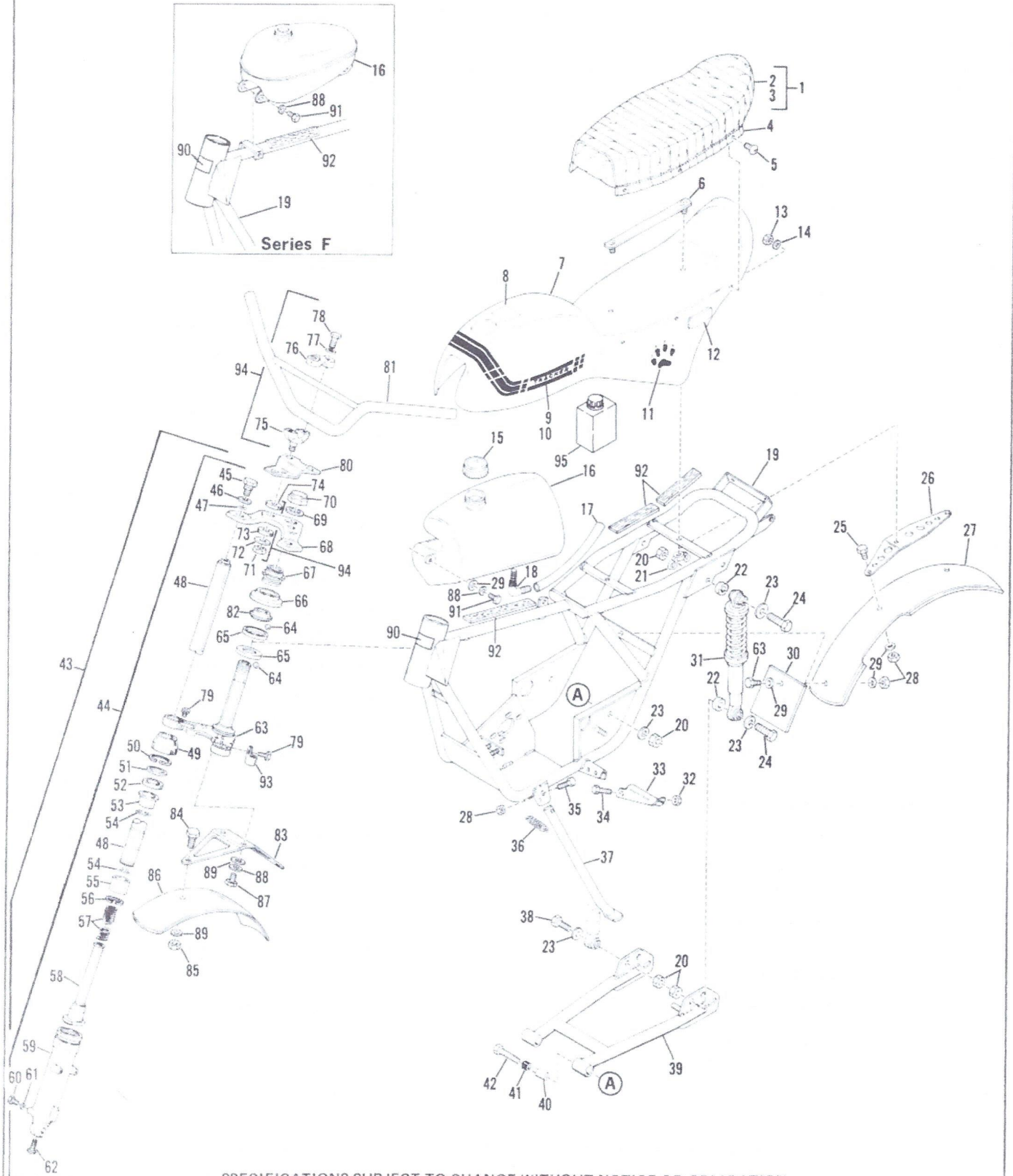
Battery and Turn Signal Package Available
Molded Gas Tank/Seat Combo

Fox Corporation warrants this Sportcycle for one full year, except drive train components (transmission, sprocket, chain), which carry a 90-day warranty. The engine and carburetor are warranted by the engine manufacturer.

Specifications subject to change without notice.



FIGURE 1



SPECIFICATIONS SUBJECT TO CHANGE WITHOUT NOTICE OR OBLIGATION

ORDER PARTS BY PART NUMBER, DESCRIPTION AND SERIAL NUMBER ONLY

TRACKER MODEL No. 6654 (Series F & I)
(Frame Area)

TRACKER MODEL No. 6654 (Series F & I)

(Frame Area)

ITEM	PART NO.	DESCRIPTION	REQ'D.
1	500-092	Seat Assembly (Incl. Item Nos. 2 thru 4)	1
2	251-430	Seat Cover	1
3	251-303	Foam, Seat Filler	1
4	20749	Strap, Seat Hold Down	2
5	111-035	Screw, Phil. Truss Head, No. 10-32 x 1/2	6
6	206-760	Body Mounting Strap	1
7	500-103-03	Body Assembly with Decals (Incl. Item Nos. 8 thru 12)	1
8	220-361	Decal, Fuel Mixture	1
9	220-363	Decal, L.H. Body "Tracker"	1
10	220-362	Decal, R.H. Body "Tracker"	1
11	220-360	Decal, Fox Paw	2
12	220-337	Reflector, Red	2
13	135-042	Lock Nut, No. 10-32	7
14	141-001	Washer, No. 10	6
15	205-101	Cap, Fuel Tank	1
16	251-305	Fuel Tank, Metal (Series F) (Incl. Item No. 18)	1
	251-424	Fuel Tank, Plastic (Series I) (Incl. Item No. 18)	1
17	200-432	Fuel Line	1
18	251-323	Elbow, Fuel Fitting	1
19	20748	Frame (Series F)	1
	20768	Frame (Series I)	1
20	135-005	Lock Nut, 3/8-16	12
21	130-005	Wing Nut, 1/4-20	2
22	203-900	Spacer, Shock, L.H.	2
23	141-004	Washer, 3/8	6
24	101-599	Capscrew, 3/8-16 x 1-3/4	2
25	101-503	Capscrew, 1/4-20 x 5/8	2
26	20767	Fender Bracket, Rear	1
27	207-044-03	Rear Fender with Notch	1
28	135-001	Lock Nut, 1/4-20	6
29	141-002	Washer, 1/4	9
30	207-091	Mud Flap	1
31	714-319	Rear Shock	2
32	135-003	Lock Nut, 5/16-18	6
33	711-181	Foot Peg	2
34	101-555	Capscrew, 5/16-18 x 1-1/2	2
35	101-513	Capscrew, 1/4-20 x 1-1/2	6
36	711-246	Spring, Kickstand	1
37	711-241	Kickstand	1
38	101-597	Capscrew, 3/8-16 x 1-1/2	6
39	500-098	Swing Arm Assembly (Incl. Item Nos. 40 and 41)	1
40	251-304	Bushing, Swing Arm	2
41	251-428	Bushing, Rubber	2
42	101-603	Capscrew, 3/8-16 x 2-1/4	2
43	714-318	Front Fork Assembly (Incl. Item Nos. 44, 63 thru 70 and 79)	1
44	714-245	Fork Arm, R.H. Complete (Incl. Item Nos. 45 thru 62)	1
	714-246	Fork Arm, L.H. Complete (Incl. Item Nos. 45 thru 62)	1
45	714-957	Bolt, Fork Arm Retaining	2

ITEM	PART NO.	DESCRIPTION	REQ'D.
46	714-953	Washer	2
47	714-958	Seal, O-Ring	2
48	714-955	Fork Leg	2
49	714-803	Dust Seal	2
50	714-804	Snap Ring, 40 mm	2
51	714-805	Back up Ring	2
52	714-806	Oil Seal	2
53	714-956	Wear Bushing	2
54	714-972	Ring, Retainer	4
55	714-965	Bushing	2
56	714-966	Snap Ring	2
57	714-969	Spring, Fork Compression	2
58	714-968	Damper Rod	2
59	714-963	Cylinder, Lower Fork, R.H. (Brake Side)	1
	714-964	Cylinder, Lower Fork, L.H.	1
60	714-962	Drain Screw	2
61	714-961	Seal, Washer	2
62	714-959	Screw, Damper Rod	2
63	714-954	Yoke and Spindle Plate	1
64	714-533	Ball Bearing	44
65	714-801	Race, Bearing	2
66	714-803	Dust Cap	1
67	714-799	Steering Thread Compressor	1
68	714-790	Yoke Plate, Top	1
69	714-971	Washer, Spindle	1
70	714-970	Nut, Spindle	1
71	714-798	Nut, Handle Bar Clamp	2
72	714-797	Washer, Handle Bar Clamp	2
73	714-796	Spacer, Clamp Rubber, Lower	2
74	714-795	Spacer, Clamp Rubber, Upper	2
75	714-794	Base, Handlebar Clamp	2
76	714-793	Block, Handlebar Top Clamp	2
77	714-792	Washer, Handlebar	2
78	714-791	Screw, Handlebar	2
79	714-802	Screw, 8 mm x 32 mm	2
80	714-690	Speedometer Bracket	1
81	20484	Handlebar	1
82	714-800	Top Corn Race, Steering	1
83	714-466	Bracket, Front Fender	1
84	101-501	Capscrew, 1/4-20 x 1/2	2
85	135-001	Lock Nut, 1/4-20	2
86	207-046-03	Fender, Front Drilled White	1
87	103-030	Capscrew, Hex Head, 6mm-1P x 16 mm	2
88	142-324	Washer, 1/4 Internal Lock	2
89	141-002	Washer, 1/4	2
90	220-375	Decal, Serial Number (Series F)	1
	220-375-01	Decal, Serial Number (Series I)	1
91	115-001	Screw, Self-tap, 1/4-28 x 1/2	3
92	203-929	Cushion, Fuel Tank	5
93	205-690	Clamp, Cable Guide	1
94	714-976	Clamp Assembly, Handlebar (Incl. Item Nos. 71 thru 78)	2
95	251-377	Oil Bottle	1

ORDER PARTS BY PART NUMBER, DESCRIPTION AND SERIAL NUMBER ONLY

SPECIFICATIONS SUBJECT TO CHANGE WITHOUT NOTICE OR OBLIGATION



desert fox

For Off-Road Use Only

ENGINE

Type	Tecumseh 133 cc AH817MB, 2 Cycle, Forced Air Cooled
Bore & Stroke	62 mm x 44 mm
Carburetion	Diaphragm Pump
Air Filtration	Micronic
Ignition	High Voltage Magneto
BHP @ rpm	6 @ 6000
Ft. Lbs Torque	5.5 @ 3500
Lubrication	Gas/Oil Pre-Mix, 25:1
Exhaust System	Performance tuned w/USDA Approved Spark Arrestor- Silencer and Heat Shield
Starting System	Easy-Action Recoil

TRANSMISSION

Type	Automatic Variable Speed Torque Sensing Drive
Drive Ratios (Overall)	27:1 - 9:1
Chain Type	#41 Motorcycle

Chain Adjuster	Cam type
FRAME	
Type	Double Loop
Steering Head	Double Ball Bearing
Swing Arm	Permanently Lubri- cated Radial Bushings

SUSPENSION

Front	Leading Link w/Coil Spring Over Shock
Rear	Coil Spring Over Shock

BRAKES

Front & Rear	105 mm Drum
-------------------------	-------------

PERFORMANCE

Maximum Speed	40 MPH
Fuel Consumption	75 MPG @ 30 MPH
Braking Distance	35 Ft. from 30 MPH
Climbing Ability	33°

DIMENSIONS

Wheels Front	16 in. High Tensile Steel
Rear	14 in. High Tensile Steel
Tires Front	2.75 x 16 Trials
Rear	3.00 x 14 Knobby
Wheelbase	47.5 in.
Dry Weight	127 lbs.

Overall Length	69 in.
Seat Height	29 in.
Ground Clearance	9 1/4 in.
Fuel Capacity	1.5 gal.
Cut-Off Switch	Handlebar Mounted
Handlebars	Chromed Motocross Braced
Footpegs	30° Folding Type
Fenders	Preston Petty Muder Unbreakable Plastic
Seat	High Density Molded Foam
Kickstand	Swing Away w/Positive Lock

SPECIAL FEATURES

Molded Gas Tank/Seat Combo

Skid Plate

Fox Corporation warrants this Sportcycle for one full year, except drive train components (transmission, sprocket, chain) which carry a 90-day warranty. The engine and carburetor are warranted by the engine manufacturer.

Specifications subject to change without notice.



DESERT FOX MODEL No. 6554 (Series E & H)

(Frame Area)

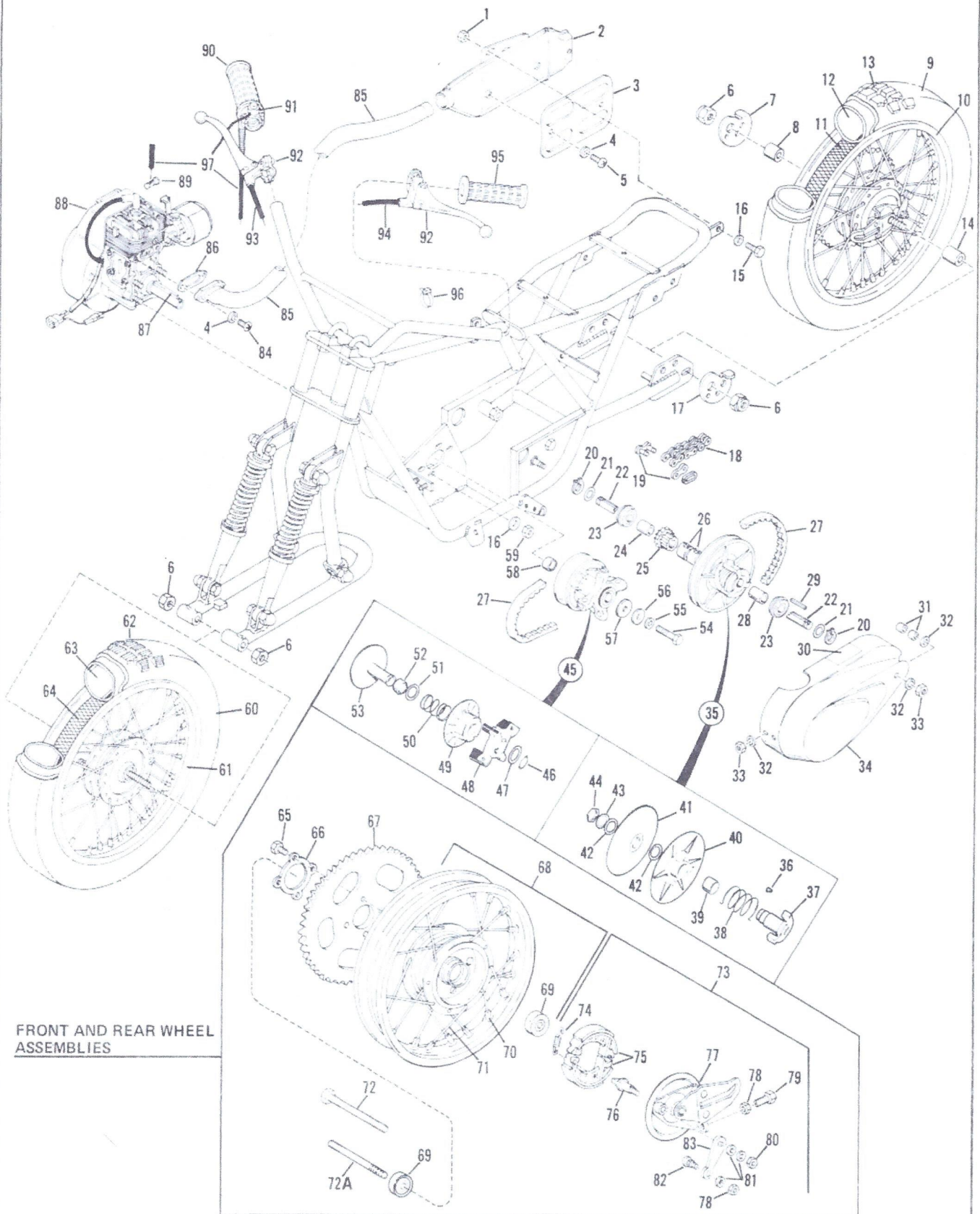
ITEM	PART NO.	DESCRIPTION	REQ'D.
1	500-092	Seat Assembly (Incl. Item Nos. 2 thru 4)	1
2	251-430	Seat Cover	1
3	251-303	Foam, Seat Filler	1
4	20749	Strap, Seat Hold Down	2
5	111-035	Screw, Philp Truss Head, No. 10 - 32 x 1/2	6
6	206-760	Body Mounting Strap	1
7	500-103-02	Body Assembly with Decals (Incl. Item Nos. 8 thru 12)	1
8	220-361	Decal, Fuel Mix	1
9	220-367	Decal, R.H. Body "Desert Fox"	1
10	220-369	Decal, L.H. Body "Desert Fox"	1
11	220-360	Decal, Fox Paw	2
12	220-337	Reflector, Red Body	2
13	135-042	Lock Nut, No. 10-32	7
14	141-001	Washer, No. 10	6
15	205-101	Cap, Fuel Tank	1
16	251-305	Fuel Tank (Series E) (Incl. Item 18)	1
	251-424	Fuel Tank (Series H) (Incl. Item 18)	1
17	200-432	Fuel Line	1
18	251-323	Elbow, Fuel Fitting	1
19	20762	Frame (Incl. Item No. 54)(Series E)	1
	20766	Frame (Incl. Item No. 54)(Series H)	1
20	135-005	Lock Nut, 3/8 - 16	12
21	130-005	Wing Nut, 1/4 - 20	2
22	203-900	Spacer, Shock	2
23	141-004	Washer, 3/8	6
24	101-599	Capscrew, 3/8 - 16 x 1 - 3/4	2
25	101-002	Capscrew, 1/4 - 20 x 5/8	2
26	20767	Fender Bracket, Rear	1
27	207-044-02	Rear Fender with Notch	1
28	135-001	Lock Nut, 1/4 - 20	6
29	141-002	Washer, 1/4	9
30	207-091	Mud Flap	1
31	251-384	Shock, Rear	2
32	135-003	Lock Nut, 5/16 - 18	6

ITEM	PART NO.	DESCRIPTION	REQ'D.
33	711-181	Foot Peg	2
34	101-555	Capscrew, 5/16 - 18 x 1 - 1/2	2
35	101-513	Capscrew, 1/4 - 20 x 1 - 1/2	6
36	711-246	Spring, Kickstand	1
37	711-241	Kickstand	1
38	101-597	Capscrew, 3/8 - 16 x 1 - 1/2	6
39	500-098	Swing Arm Assembly (Incl. Item Nos. 40 and 41)	1
40	251-304	Bushing, Swing Arm	2
41	251-428	Bushing, Rubber	2
42	101-603	Capscrew, 3/8 - 16 x 2 - 1/4	2
43	500-077	Front Fork Assembly (Incl. Item Nos. 13, 20, 32, 38, 44 - 46, 51 & 53)	1
44	20739	Leading Link	1
45	20733	Front Fork	1
46	206-780	Shoulder Bolt, 5/16 - 18	2
47	101-870	King Pin Bolt, 5/8 - 18 x 6 - 1/2	1
48	135-014	Lock Nut, 5/8 - 18	1
49	251-265	Shock, Front	2
50	101-501	Capscrew, 1/4 - 20 x 1/2	2
51	20209	Front Fender Bracket	1
52	207-046-02	Front Fender	1
53	101-970	Capscrew, No. 10 - 32 x 3/4	1
54	200-068	Bearing, 5/8	2
55	220-374	Decal, Serial Number (Series E)	1
	220-378	Decal, Serial Number (Series H)	1
56	203-929	Cushion, Fuel Tank and Seat	5
57	115-001	Screw, Tap, 1/4 - 28 x 1/2	3
58	142-324	Washer, 1/4 Internal Lock	3
59	251-362	Handle Bar Clamp Assembly (Incl. Item Nos. 32, 60 and 61)	2
60	710-005	Block, Handle Bar Clamp	2
61	710-001	"U" Bracket, Handle Bar Clamp	2
62	20484	Handle Bar	1
63	101-507	Capscrew, 1/4 - 20 x 3/4	1

ORDER PARTS BY PART NUMBER, DESCRIPTION AND SERIAL NUMBER ONLY

SPECIFICATIONS SUBJECT TO CHANGE WITHOUT NOTICE OR OBLIGATION

FIGURE 2



SPECIFICATIONS SUBJECT TO CHANGE WITHOUT NOTICE OR OBLIGATION
ORDER PARTS BY PART NUMBER, DESCRIPTION AND SERIAL NUMBER ONLY

**DESERT FOX MODEL No. 6554 (Series E & H)
(Drive Components)**

DESERT FOX MODEL No. 6554 (Series E & H)

(Drive Components)

ITEM	PART NO.	DESCRIPTION	REQ'D.	ITEM	PART NO.	DESCRIPTION	REQ'D.
1	135-003	Lock Nut, 5/16 - 18	1	52	251-326-02	Bearing	1
2	20765	Muffler	1	53	251-326-01	Sheave Assembly, Inboard	1
3	20747	Heat Guard	1	54	101-560	Capscrew, 5/16 24 x 2	1
4	142-321	Washer, No. 10 Internal Lock	4	55	142-315	Washer, 5/16 Internal	1
5	111-009	Screw, Philp Pan Hd., No.8 x 1/2	2	56	141-103	Washer, 5/16	1
6	135-010	Nut, Axle, 1/2 - 20	4	57	141-003	Washer, TC Retainer	1
7	20462	Adjuster, Axle 1/2, R.H.	1	58	206-755	Spacer, Engine Shaft	1
8	207-094	Spacer, Axle R.H.	1	59	135-004	Lock Nut, 5/16 - 24	4
9	500-093	Rear Wheel with Brake, Tire, Tube, Rim Strip & Sprocket (Incl. Item Nos. 10 thru 13 & 65 thru 67)	1	60	500-001	Front Wheel with Brake, Tire Tube and Rim Strip (Incl. Item Nos. 61 thru 64)	1
10	206-284	Rear Wheel Assembly with Brake less Sprocket (Incl. Item Nos. 68 and 73)	1	61	206-898	Front Wheel Assembly with Brake (Incl. Item Nos. 68 and 73)	1
11	206-267	Rim Strip, 14" Rubber	1	62	251-164	Tire, 2.75 x 16" Trails	1
12	251-243	Tube, 3.00 x 14"	1	63	251-165	Tube, 2.75 x 16"	1
13	251-197	Tire, 3.00 x 14" Knobby	1	64	206-143	Rim Strip, 16" Rubber	1
14	207-095	Spacer, Axle L.H.	1	65	206-818	Collar, Sprocket Lock	1
15	101-547	Capscrew, 5/16 - 18 x 3/4	1	66	130-055	Screw, Sprocket Lock	4
16	141-003	Washer, 5/16	5	67	206-812	Sprocket, No. 41 - 72 Tooth	1
17	20463	Adjuster, Axle 1/2 L.H.	1	68	206-802	Wheel and Hub Assembly, 16" Front (Incl. Item Nos. 69 thru 71)	1
18	207-112	Chain, No. 41 - 112 pitch	1		206-799	Wheel and Hub Assembly, 14" Rear (Incl. Item Nos. 69 thru 71)	1
19	205-365	Master Link, No. 41	1	69	206-359	Bearing, Wheel	4
20	206-567	Snap Ring	2	70	206-363	Nipple, Wheel Spoke	72
21	206-573	Washer	2	71	206-362	Spoke, Front Wheel, 16" x 6-5/8"	72
22	251-329	Jackshaft, 8"	1		206-372	Spoke, Rear Wheel, 14" x 4-5/8"	72
23	200-185	Bearing, 5/8 I.D. Jackshaft	2	72	206-843	Axle Bolt, Front, 1/2 - 20 x 9-1/2	1
24	207-098	Spacer, Sprocket Frame	1		206-838	Axle Bolt, Rear, 1/2 - 20 x 8	1
25	206-785	Sprocket, 8 teeth - with internal key	1	72A	101-718	Axle Bolt, Front, 1/2 - 20 x 7-1/2	1
26	206-607	Lock Collar, Jackshaft	2		101-724	Axle Bolt, Rear, 1/2 - 20 x 9	1
27	215-327	Belt, TC Drive	1	73	206-357	Brake Assembly (Incl. Item Nos. 74 thru 83)	1
28	207-096	Spacer, Frame - Converter	1	74	206-793	Spring, Brake - Pair	1
29	205-090	Key, 3/16 x 3/16 x 1-5/8	1	75	206-792	Shoe, Brake - Pair	1
30	220-342	Decal, Caution	1	76	206-794	Cam, Brake Actuating	1
31	206-923	Spacer, Belt Guard	2	77	206-795	Back Plate, Brake	1
32	141-002	Washer, 1/4	4	78	205-690	Nut, Adjustment Screw	2
33	135-001	Lock Nut, 1/4 - 20	3	79	205-689	Screw, Cable Adjustment	1
34	251-332	Cover, Belt Guard	1	80	206-821	Nut, Brake Arm	1
35	251-328	Driven Unit (Incl. Item Nos. 36 thru 44)	1	81	206-820	Washer, 6mm	3
36	251-328-08	Button	3	82	205-688	Bolt, Cable Locking	1
37	251-328-04	Cam Assembly (Incl. Item No.36)	1	83	206-796	Arm, Brake Actuating	1
38	251-328-05	Spring, Compression	1	84	111-044	Machine Screw, 1/4 - 20 x 1/2	2
39	251-328-09	Bearing	1	85	20764	Exhaust Pipe	1
40	251-328-01	Sheave Assembly, Rear Outboard	1	86	251-349	Gasket, Exhaust Pipe	1
41	251-328-03	Sheave Assembly, Rear Inboard	1	87	202-526	Key, 3/16 x 3/16 x 3	1
42	251-328-02	Washer	1	*88	251-316	Engine, 5 HP - 2 Cycle Lauson	1
43	251-328-07	Lockwasher	1	89	206-419	Cable Stop	1
44	251-328-06	Nut, Sheave Retaining	1	90	251-330	Twist Grip Assembly (Incl. Item Nos. 91 and 97)	1
45	251-326	Driver Unit (Incl. Item Nos. 46 thru 53)	1	91	251-423	Kill Button with Wire	1
46	251-326-06	Snap Ring	1	92	201-250	Brake Lever, 7/8 ID	2
47	251-326-08	Washer	1	93	206-868	Brake Cable, Front	1
48	251-326-05	Pawl Carrier Assembly	1	94	206-157	Brake Cable, Rear	1
49	251-326-03	Sheave Assembly, Outboard	1	95	206-154	Dummy Grip	1
50	251-326-04	Spring, Compression	1	96	203-733	Ty - Rap, Self Locking	7
51	251-326-07	Washer, Spring Retaining	1	97	251-331	Cable, Throttle	1

*Engine, Kickstarter and Carburetor Parts and Service are handled by your local Tecumseh, Lauson-Power Products Dealer.
Refer to the yellow pages for your local Dealer.

ORDER PARTS BY PART NUMBER, DESCRIPTION AND SERIAL NUMBER ONLY

SPECIFICATIONS SUBJECT TO CHANGE WITHOUT NOTICE OR OBLIGATION



go-kart

For Off-Road Use Only

ENGINE

Type	Tecumseh 127 cc 4 Cycle, Air cooled
Bore & Stroke	59 mm x 47 mm
Compression Ratio	6.29 1
Carburetion	Float Bowl, 12.7 mm
Air Filtration	Micronic
Ignition	Flywheel Magneto
BHP @ rpm	3 @ 3600
Ft. Lbs. Torque	4.43 @ 3000
Lubrication	Positive Oil Mist
Exhaust System	USDA Approved Spark Arrestor — Engine Mounted
Starting System	Easy-Action Recoil

TRANSMISSION

Type	Automatic Steel Shoe Centrifugal Clutch
------	---

Drive Ratio	5 1
-------------	-----

Chain Type	#35 Racing
------------	------------

FRAME

Type	1 in. Heavy Wall Tubular
------	-----------------------------

BRAKES

Rear	Cam Action, Rod Actuated
------	-----------------------------

PERFORMANCE

Maximum Speed	25 MPH
---------------	--------

Fuel Consumption	80 MGP @ 80% Power
------------------	-----------------------

DIMENSIONS

Wheels	Stamped Steel Front and Rear
--------	---------------------------------

Tires	4, 10/3.50 x 4 — Studded Tread, Front and Rear
-------	--

Wheelbase	44 in.
-----------	--------

Dry Weight	110 lbs.
------------	----------

Overall Length	62 1/2 in.
----------------	------------

Seat Height	24 in.
-------------	--------

Ground Clearance	5 3/4 in.
------------------	-----------

Fuel Capacity	5 gal.
---------------	--------

Cut-Off-Switch	Steering Support Mounted
----------------	-----------------------------

Seat	Foam Padded w/Side Safety Supports
------	--

SPECIAL FEATURES

Molded Racing-Type Steering Wheel

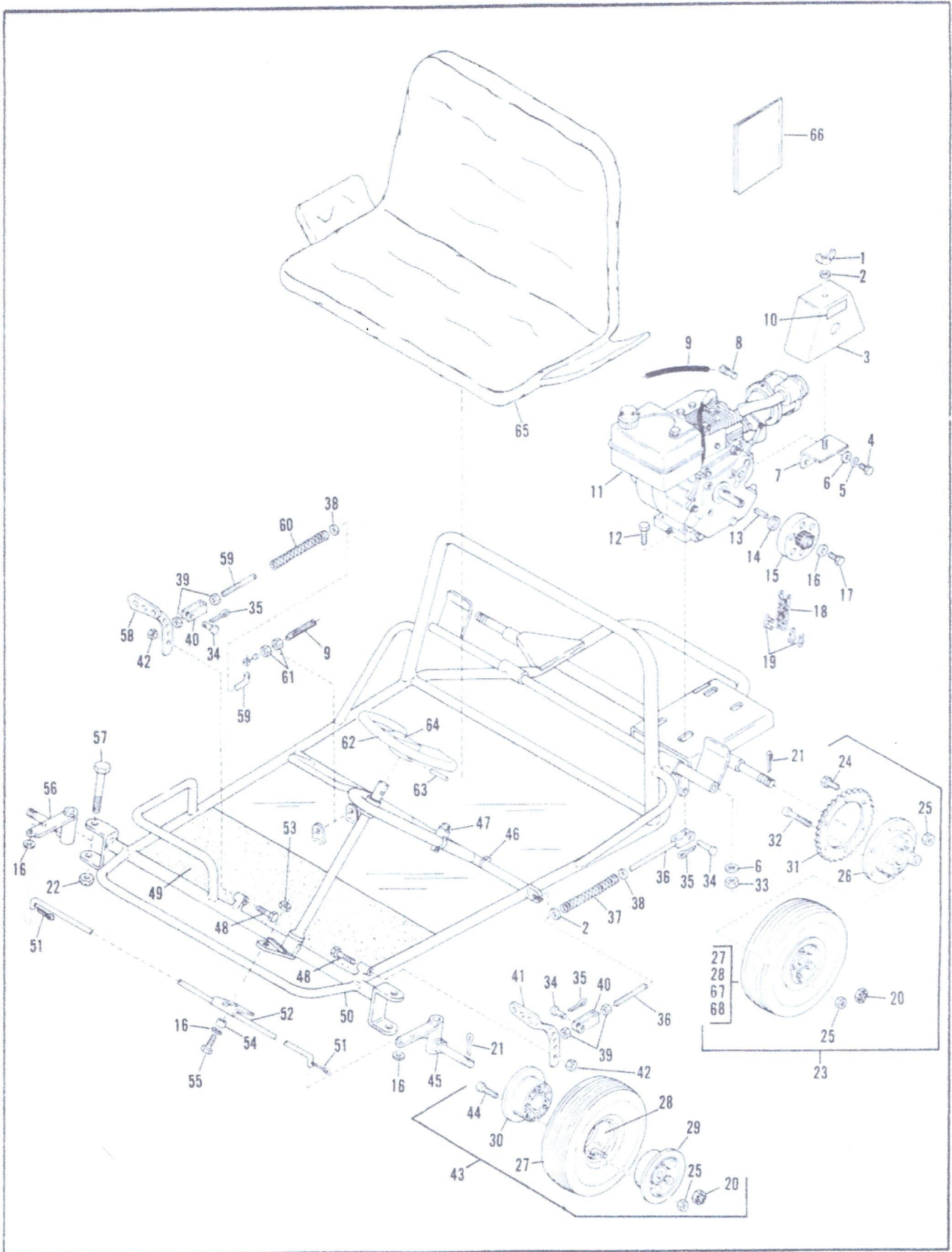
Canted Foot and Brake Pedals

Easy-To-Remove Seat, Steering Wheel
For Easy Transporting

Fox Corporation warrants this Go-Kart for one full year, except drive train components (transmission, sprocket, chain), which carry a 90-day warranty. The engine and carburetor are warranted by the engine manufacturer.

Specifications subject to change without notice.

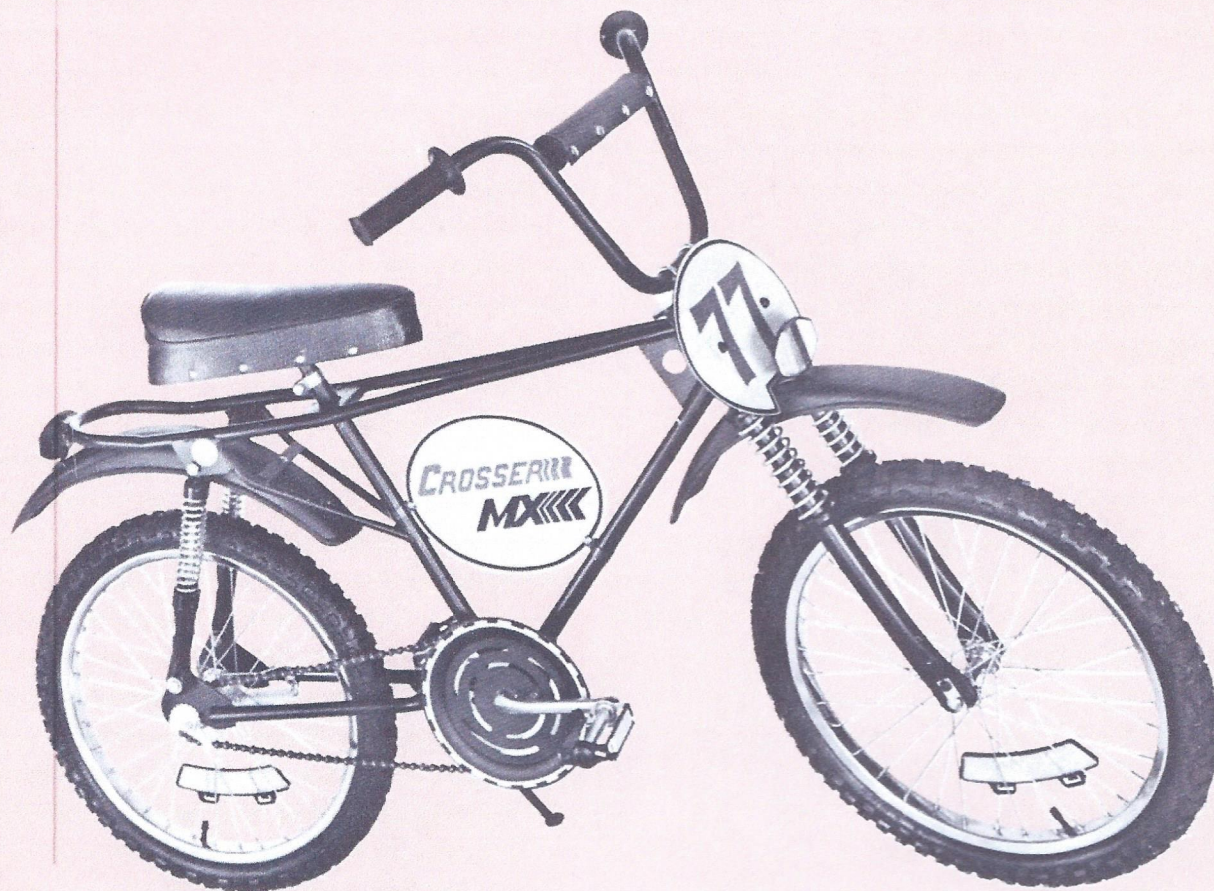




FOX FUN-KART
Model Number 2214

Item	Part No.	Description	Req'd.
1	130-005	Wing Nut, 1/4-20	1
2	141-002	Washer, 1/4	2
3	204-948	Chain Guard, Painted Black	1
4	101-544	Capscrew, 5/16-24 x 1/2	2
5	142-315	Lockwasher, 5/16	2
6	141-003	Washer, 5/16	6
7	204-946	Guard Mount Bracket - Painted Black	1
8	206-419	Cable Stop	1
9	251-459	Throttle Cable	1
10	220-342	Decal, Guard, "Caution"	1
11	251-445	Engine, Lauson 3-1/2 H. P.	1
12	101-556	Capscrew, 5/16-24 x 1-1/2	4
13	200-057	Key, 3/16 x 3.16 x 5/8	1
14	202-508	Spacer, Clutch	1
15	206-884	Clutch, Single Speed No. 35-12	1
16	141-004	Washer, 3/8	4
17	102-090	Capscrew, Nylok, 3/8-24 x 3/4	1
18	206-629	Chain, No. 35-72 Pitch	1
19	200-059	Master Link, No. 35	1
20	131-114	Nut, Slotted Hex. 5/8-18	4
21	161-094	Cotter Pin, 1/8 x 1-1/4	4
22	135-314	Nut, Hex Lock Thin 5/8-18	2
23	500-025	Wheel Assy., w Drive Sprocket (Incl. Item Nos. 24 thru 32)	1
24	101-504	Capscrew, 1/4-28 x 5/8	6
25	135-002	Lock Nut, 1/4-28	18
26	200-875	Hub, Sprocket Adaptor Painted Black	1
27	250-034	Tire, 410/350 x 4	4
28	250-025	Tube, 410/350 x 4	4
29	500-023	Wheel Half & Bearing Assembly,	3
30	500-024	Wheel Half & Bearing Assembly	3
31	200-877	Sprocket, No. 35-60 Tooth	1
32	109-101	Capscrew, Socket Hd., 1/4-28 x 2-1/4	3
33	135-004	Lock Nut, 5/16-24	4

Item	Part No.	Description	Req'd.
34	200-036	Pin, Clevis, 1/4 x 1/2	3
35	161-062	Cotter Pin, 1/16 x 3/4	3
36	206-933	Brake Rod - Plated	1
37	200-556	Spring, Brake Return	1
38	200-582	Washer, Spring Return	2
39	131-002	Nut, Hex, 1/4	4
40	206-927	U-Bracket, Plated	2
41	200-534	Pedal, Brake - Plated	1
42	135-003	Lock Nut, 5/16-18	2
43	500-022	Wheel Assembly (Incl. Item Nos. 25, 27 thru 30 and 44)	3
44	109-095	Capscrew, Socket Hd., 1/4-28 x 1-1/2	9
45	206-956	Spindle, Left Hand - Painted Black	1
46	203-733	Ty-Rap	3
47	207-164	Kill Button, w Wire	1
48	101-555	Capscrew, 5/16-18 x 1-1/2	2
49	251-455	Floor Mat	1
50	207-146	Frame, Painted Red	1
51	161-093	Cotter Pin, 1/8 x 3/4	2
52	207-255	Tie Rod - Plated	1
53	135-006	Lock Nut, 3/8-24	1
54	206-867	Spacer, Tie Rod	1
55	101-596	Capscrew, 3/8-24 x 1-1/4	1
56	206-957	Spindle, Right Hand - Painted Black	1
57	200-077	Bolt, Kingpin, 5/8-18 x 3-3/4	2
58	200-535	Pedal, Accelerator - Plated Zinc	1
59	207-254	Accelerator Rod - Plated Zinc	1
60	200-557	Spring, Accelerator Rod Return	1
61	204-097	Nut, Casing, 3/16	2
62	206-930	Steering Wheel	1
63	163-009	Roll Pin, 1/4 x 2-1/4	1
64	220-352	Decal, Steering Wheel	1
65	251-454	Seat, 1 Piece	1
66	240-038	Owners Manual	1
67	500-169	Wheel Half & Bearing Assy., Short Hub	1
68	500-170	Wheel Half & Bearing Assy., Long Hub	1



'CROSSER MX

Style. Durability. Performance. Reliability. That's what FOX means to thousands of motorcycle, Go Kart* and snowmobile enthusiasts. Now the advent of bicycle motocross and the burgeoning popularity of the sport has enticed FOX into the fast moving BMX business.

Enter the FOX CROSSER, the American made motocrosser for the young MX experts who truly appreciate the quality of design and manufacture inherent in a bike intended for the rigors and stress of competition motocross. Scrutinize the specifications closely - they all add up to style, durability, performance and reliability - and that means FOX.

Frame	Motorcycle Design Double backbone, single cradle, Motocross construction. MIG welded, high yield, low carbon steel tubing, 16 gauge main frame members. Axial load M/C bearings in steering head.
Suspension Front	Telescopic spring dampened front forks. 2.75 Inch travel. Hi-carbon, tempered steel springs. Motocross triple clamps. Positive axle retention.
Rear	One piece swing arm. Spring type shocks (2) spring dampened. 2.9 Inches travel. 8 Gauge steel axle and shock mounts.
Wheels Front & Rear	Heavy gauge (non-mud catching) chrome rims. 36 Spoke hub and rim. $\frac{3}{8}$ Inch axles. .105 Inch spokes and heavy duty nipples.
Tires Front	1.75 X 20 Goodyear Motocross Knobby.
Rear	2.125 X 20 Goodyear Motocross Knobby.
Brakes	Bendix Coaster Brake--rear mounted.

Crank	Forged, one piece, heat treated Ashtabula
Chain	1900 P.S.I. tensile strength.
Chain Adjuster	Snail cam, motorcycle type.
Pedals	Serrated (rat-trap) type.
Sprocket Guard	Circular type, crank mounted.
Handlebars	Motocross braced (28" wide), flat black finish.
Handlebar Cushion	Foam padded, vinyl covered.
Handlebar Clamps	Double "U" clamp & pillow block, non-slip mounts.
Grips	Preston Petty "Hexagonal" racing grips.
Fenders	Unbreakable plastic (front & rear) - motocross mounted.
Kickstand	Swing arm mounted, heavy duty spring retractor, positive lock.
Seat	Motocross saddle (3" foam padded) center mount, adjustable height.
Reflectors	Complete group BMA/6 approved.
Number Plates	Front mounted unbreakable plastic number panel. Mid-frame mounted unbreakable plastic nameplate.
Paint	Baked enamel finish.
Weight	44 Pounds per unit.
Packaging	Individually boxed in heavy wall corrugated carton. Assembled complete, less handlebars, number panel and pedals.

*REGISTERED TRADEMARK OF FOX CORP
Specifications subject to change without notice.



FOX CORPORATION
1111 Racine Street
Janesville, Wis. 53545
608/752-9441