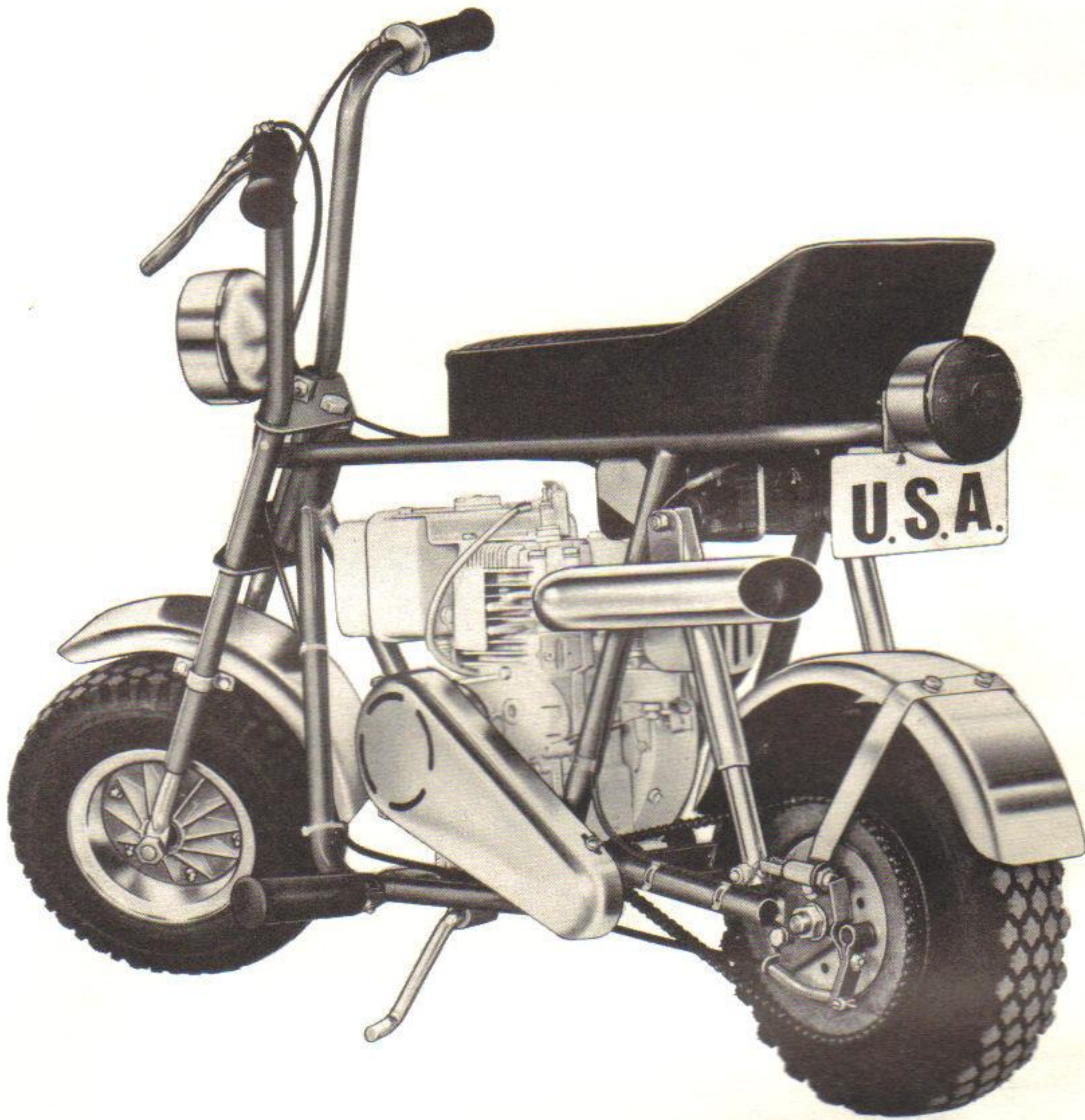


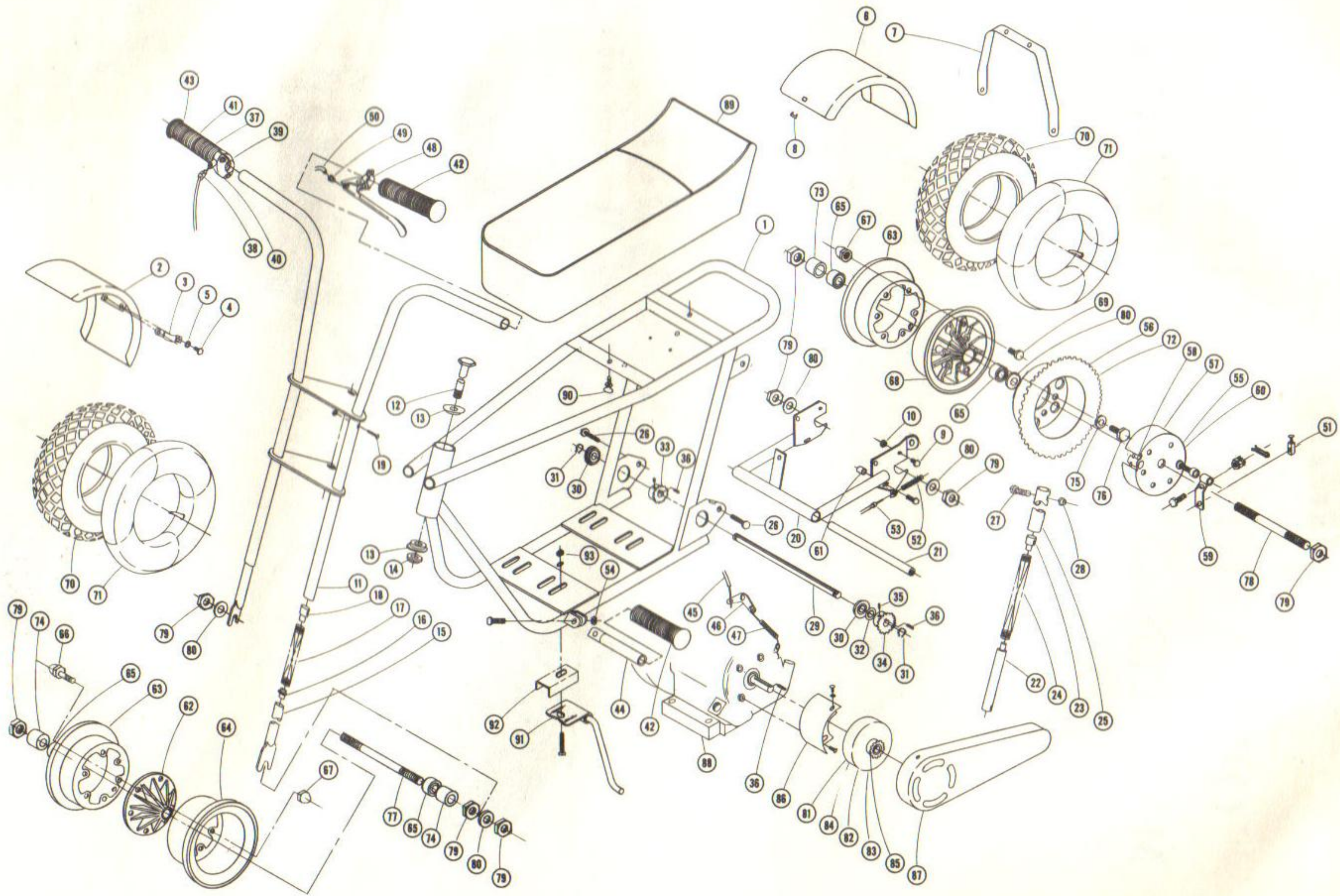
Continental

OPERATIONS MANUAL & MAINTENANCE INSTRUCTION

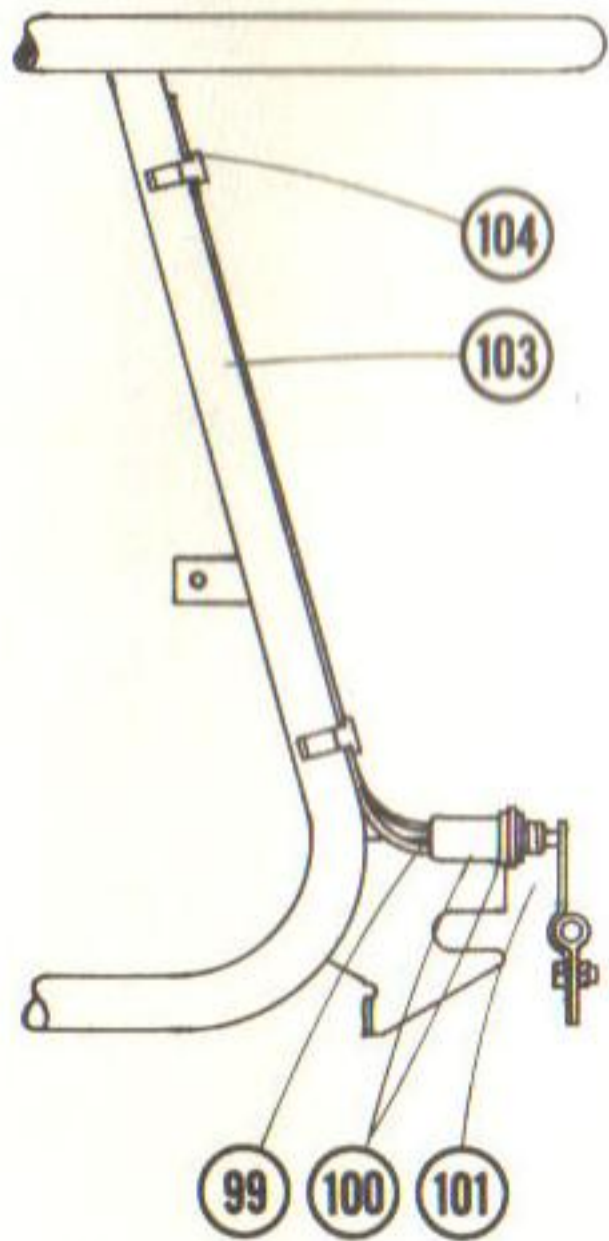
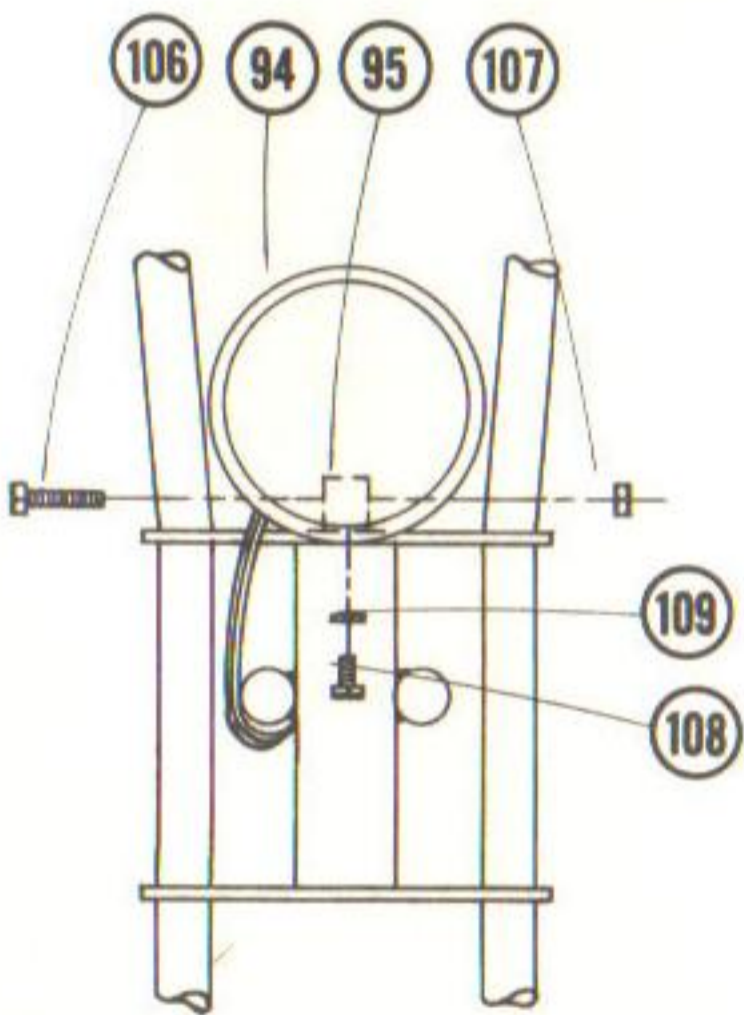
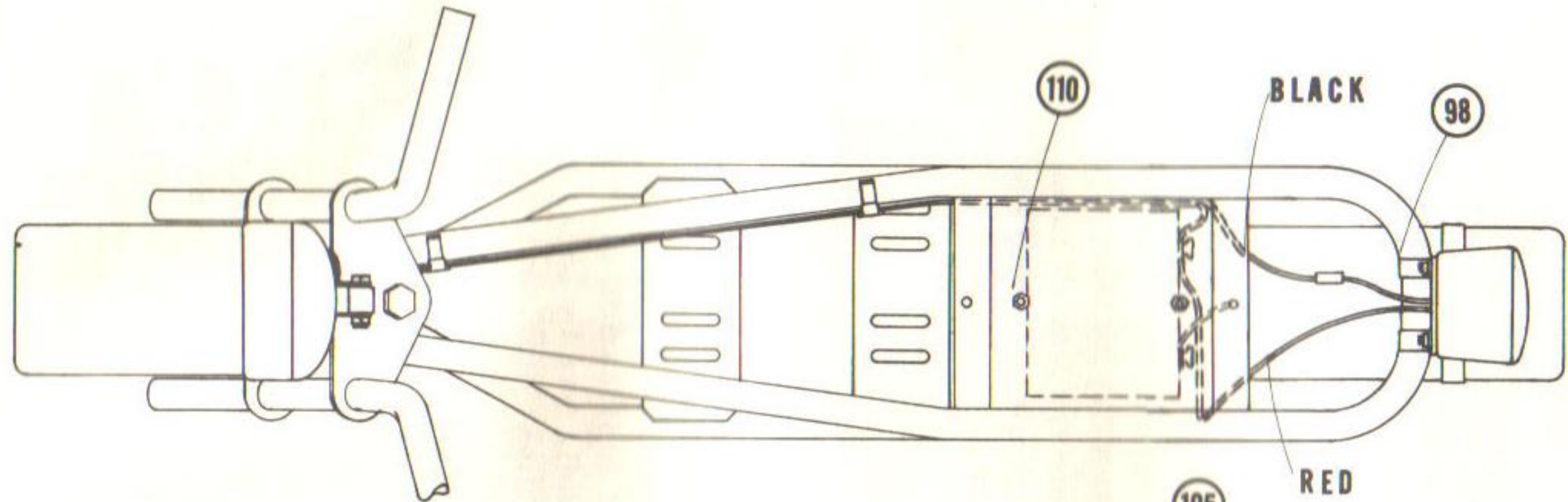


RUPP MANUFACTURING, INC.
P. O. BOX 1095, MANSFIELD, OHIO 44903

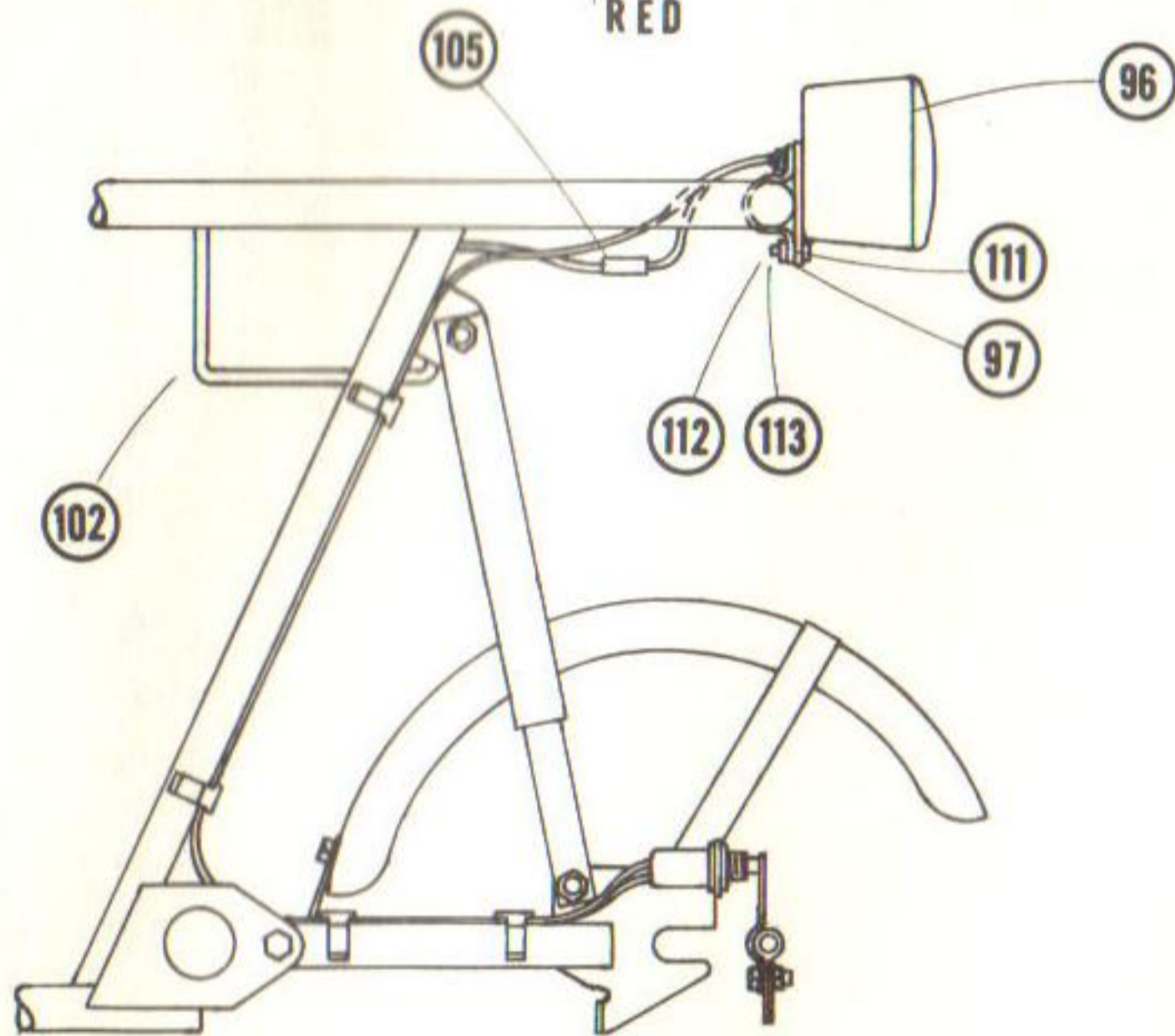
MANUFACTURERS OF "QUALITY IN MOTION," SNOW VEHICLES / RACING KARTS / CYCLES



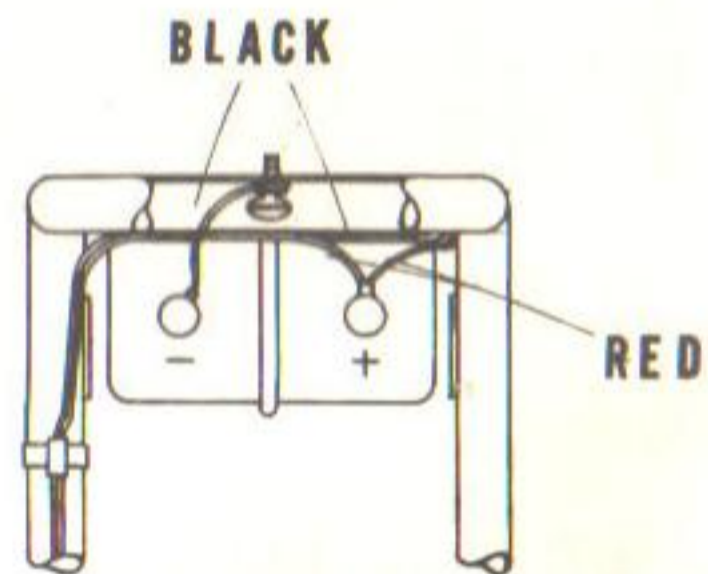
LIST NO.	PART NO.	DESCRIPTION	LIST	LIST NO.	PART NO.	DESCRIPTION	LIST	LIST NO.	PART NO.	DESCRIPTION	LIST
		FRAMES		34	10328	Chain, 10 ft. pkg.	15.00	79		Jam Nut 5/8-18	.15
1	11168	Frame Weld Assy., Custom	40.00		10740	20T Sprocket	4.50	80		Flat Washer 5/8 I.D.	.08
	11576	Frame Weld Assy., Custom, Painted Blue	50.00	35		Set Screw 1/4-20x3/16	.12	81	10629	11T Fairbanks Morse Clutch	13.95
	11249	Frame Weld Assy., Special	37.50	36	10160	Key 3/16x3/16x3/4	.12		10468	12T Fairbanks Morse Clutch	13.95
	11577	Frame Weld Assy., Special, Painted Blue	47.50			CONTROLS & FOOT PEDALS		82	10737	11T Drum only	10.50
	11120	Frame Weld Assy., Econocycle	42.00	37	11583	Throttle Twist Grip Assy. w/Rubber Grip	3.75		11594	12T Drum only	10.50
	11578	Frame Weld Assy., Econocycle, Painted Blue	52.00		11584	Throttle Twist Grip Assy. w/Plastic Grip	3.00	83	10681	Clutch Shoes, pr.	6.50
		FENDERS		38	10514	Twist Grip Ferrule only	.15	84	10682	Clutch Spring, ea.	.30
2	11178	Front Fender, Chrome	4.95	39	10513	Twist Grip Top Casting only	.80	85	11574	Clutch Snap Ring	.55
	10277	Front Fender, Painted Blue	4.25	40	10512	Twist Grip Lower Casting only	.60	86	10446	Chain Guard Adaptor, Custom & Special	1.10
3	10467	Front Fender Clamp	.15	41	10511	Twist Grip Barrel Casting only	.65	87	10460	Chain Guard, Custom	1.50
4		Front Fender Screw 14x3/8 Metal Screw	.08	42	10109	7/8" I.D. Plastic Dummy Grip & Pedal cover	.25		11137	Chain Guard, Special	2.75
5		1/4 Star Washer	.08	43	10576	1" I.D. Plastic Grip	.30		11121	Chain Guard, Econocycle	.95
6	11155	Rear Fender, Chrome, Custom	3.95	42	10769	7/8" I.D. Rubber Dummy Grip & Pedal cover	.75			ENGINES	
	11156	Rear Fender, Painted Blue, Special	3.25	43	10809	1" I.D. Rubber Grip	.65	88	11192	H-22, 2 1/4 H.P., Econocycle	51.50
7	11163	Rear Fender Brace, Chrome	1.35	44	11160	Foot Pedal Weld Assy. only	2.30		11191	H-25, 2 1/2 H.P., Special	52.70
8	10502	Rear Fender Tinnerman Nut 1/4-20	.12	45	10140	Throttle Cable, 36"	2.48		11188	H-35, 3 1/2 H.P., Custom	63.00
9		Hex Head Bolt 1/4-20x1/2	.08	46	10175	Throttle Arm (on Engine)	.50			SEATS	
10		Loc Nut 1/4-20	.10	47	10683	Throttle Return Spring (on Engine)	.15	89	11187	Seat Cushion, Custom	11.95
		FORKS		48	10994	Brake Hand Lever Assy.	3.80		11181	Seat Cushion, Special	7.95
11	11173	Fork Weld Assy., Custom & Special	10.30	49	10995	Brake Lever Barrel	.25		11266	Seat Cushion, Econocycle	6.00
	11579	Fork Weld Assy., Custom, Painted Blue	17.30	50	11139	Brake Cable, 54 1/2	4.80	90		1/4-20x34 Wing Bolt	.15
	11275	Fork Weld Assy., Econocycle	14.50	51	10176	Brake Cable Stop Clamp w/screw	.20			MISCELLANEOUS	
	11580	Fork Weld Assy., Econocycle, Painted Blue	21.50	52	10501	Brake Return Spring	.15	91	11186	Kickstand	1.85
12	11154	Steering Column Bolt, Custom & Special	.95	53	10142	Brake Cable Ferrule	.12	92	11146	Kickstand Bracket	.45
	10111	Steering Column Bolt, Econocycle	1.10	54		Loc Nut 5/16-24	.10	93		Hex Nut 5/16-18	.08
13	10107	Steering Column Bearing	1.15			BRAKE ASSY.			11455	Chrome Tail Pipe Extension, Custom	4.95
14		Steering Column Loc Nut 5/8-18	.20	55	10127	Brake Assy., less drum	15.00		11369	Continental Illuminated Sign 25" x 10"	12.00
	11598	Front Shock Assy.	2.00	56	11497	60T Drum & Sprocket	4.50		11603	Nassau Blue Spray Bomb	can 2.50
15	11177	Strut, Chrome	1.30		11496	72T Drum & Sprocket	4.50		11593	Clear Windshield	14.95
16	10106	Strut Plug, Lower	.25	57	10130	Brake Shoes, pr.	8.00		11592	Rubber Shock Cover (ea.)	.98
17	10104	Strut Spring	.25	58	10131	Brake Actuating Cam	3.50			LIGHTING EQUIPMENT	
18	10105	Strut Plug, Upper	.25	59	10132	Brake Actuating Arm	3.25		11589	Light Kit	12.95
19		Strut Bolt 1/4-20x1 1/4	.08	60	10129	Brake Spring, Shoe to Shoe	.50	94	11104	Headlight	6.00
		SWING ARM & REAR SHOCKS		61	11180	Brake Bolt Spacer	.16		11339	Sealed Headlight Unit	3.30
20	11167	Swing Arm	6.95			WHEELS & TIRES		95	11130	Headlight Bracket	.60
	11581	Swing Arm, Painted Blue	8.95	62	11585	6" Front Wheel Assy., less tire & tube	14.80	96	11464	Tail Light	3.50
21	11164	Swing Arm Pivot Bar	1.10	62	11586	6" Front Casting only w/bearing	10.50		11643	Tail Light Lens	.90
	11582	Rear Shock Assy. Complete	4.95	63	11396	6" Chrome Outer Rim w/valve hole	2.30	97	11466	Tail Light - License Bracket	.35
22	11124	Rear Shock Strut, Lower	1.50	64	11573	6" Chrome Outer Rim, Plain	2.25	98	10467	7/8 Tube Clamp	.15
23	11182	Rear Shock Plug, Upper	.50	65	10429	Bearing, 5/8 Sealed	1.60	99	11272	Stop Light Switch	1.75
24	11183	Rear Shock Spring	.35	66	11399	Acorn Stud, Front Wheel	.25	100	10733	Stop Light Switch Nut	.15
25	11125	Rear Shock Sleeve	2.30	67	10257	Acorn Nut	.10	101	11268	Stop Light Switch Actuating Arm	.20
26		Hex Head Bolt 3/8-24x1	.10		11587	6" Rear Wheel Assy., less tire & tube	12.00	102	11189	U-Bolt, Battery	.30
27		Hex Head Bolt 3/8-24x1 1/2	.10	68	11588	6" Rear Casting only w/bearings	10.70	103	11290	Wiring Harness	2.20
28		Loc Nut 3/8-24	.10	69	10253	Wheel Stud	.08	104	11291	Wiring Frame Clip	.10
		JACK SHAFT ASSY.		70	10125	6" Studded Tire	10.15	105	11595	Female Connector	.20
29	10133	Jack Shaft	1.60	71	10124	6" Innertube	2.95	106		Hex Head Bolt 5/16-18x1 1/4	.10
30	10058	Jack Shaft Bearing	1.85	72	11599	76T Steel Sprocket only	2.95	107		Loc Nut 5/16-18	.10
31	10136	Jack Shaft Snap Ring	.08		11511	Sprocket Spacer Studs, Econocycle (not shown)	.35	108		Hex Head Bolt 5/16-24x 1/2	.10
32	10138	Fiber Washer 5/8 I.D.	.08	73	11490	Rear Wheel Spacer	.45	109		Loc Washer 5/16	.10
33	10238	10T Sprocket	1.95	74	11489	Front Wheel Spacer	.45	110		Loc Nut 1/4-28	.10
	10135	11T Sprocket	1.95	75		Loc Washer 5/16	.10	111		Hex Head Bolt 1/4-20x 1/2	.10
	10159	12T Sprocket	1.95	76		Hex Head Bolt 5/16-18x3/4	.10	112		Hex Nut 1/4-20	.10
	10406	13T Sprocket	2.85			AXLES & NUTS		113		Loc Washer 1/4	.10
34	10134	15T Sprocket	2.85	77	10115	Front Axle, Custom & Special	1.10				
	10745	16T Sprocket	3.40		10121	Front Axle, Econocycle	1.05				
	10746	17T Sprocket	3.60	78	10121	Rear Axle, Custom & Special	1.05				
	10747	18T Sprocket	4.15		11154	Rear Axle, Econocycle	.95				



SPECIAL



CUSTOM



DRIVE UNIT

- CHAIN:** No. 35 Chain. Keep chain well oiled with Rupp chain lubricant or equivalent. The proper chain tension is of prime importance for maximum efficiency. Keep chain adjusted so there is approximately 1/8 to 1/4 inch deflection when wiggling the chain in an up and down motion. On Custom models adjust the rear chain by loosening the rear wheel and moving rearward to tighten; it is necessary to also loosen the brake mounting bolt when adjusting the rear wheel. Adjust the forward chain by loosening the engine and the rear chain guard bolt and then slide engine forward the proper amount.
- SPROCKETS:** Alignment of sprockets should be checked periodically. Check for signs of sprockets or keys having moved on the shafts. Correct by re-aligning and re-tightening of set screws. Sprockets out of alignment will cause excessive chain wear and will increase the possibility of chain breakage.
- BEARINGS:** Custom only, these are sealed factory lubricated bearings. They do not need lubrication.
(Jack Shaft)
- CLUTCH:** The clutch is of centrifugal design with steel shoes for long life. Occasional removing of the clutch drum and the application of several drops of oil on the brass bushing is necessary for long life. If clutch squeals or chatters, it may be due to a dry bushing; apply oil as indicated above. If clutch remains engaged at an idle, one of the clutch springs may be broken; remove clutch drum and inspect. Replace spring or springs if necessary.

CONTROLS

- CABLES:** Throttle and brake cables should be oiled occasionally to insure good operation. Use a light penetrating oil and apply internally to the cable housing by disconnecting one end.
- THROTTLE
TWIST GRIP:** To insure free movement occasional lubrication is required. Remove the twist grip assembly from the handle bar by loosening the two screws in the adaptor ring. Apply a light weight lubricant to the handle bar and replace the assembly.
- BRAKE
LEVER:** Apply a light oil to the pivot point occasionally. Adjust cable stop at brake so that approximately 1/2" free movement is at end of brake hand lever.
- THROTTLE
ADJUSTMENT:** Be sure the cable housing clamp on the engine is secure and the cable housing is in the ferrule at the twist grip. Idle the engine with twist grip throttle in full off position. Adjust cable clamp at throttle arm on engine to maintain this idle position. Tighten cable clamp securely.
NOTE: (Engine carburetor adjustments should be made in accordance with engine manual, so that engine idles properly by manual operation of the throttle, before the above adjustments are attempted.) Occasionally oil all pivot points on throttle and governor linkages.

BRAKE

ADJUSTMENT: Adjust brake by loosening brake cable stop clamp and sliding up the cable until proper hand lever adjustment is achieved.

WHEELS AND TIRES

WHEELS: Wheels are Rupp Grand Prix with aluminum center and steel rims. The bearings are sealed and need no lubrication.

TIRES: Recommended tire pressures for best performance are: front and rear - 25 lbs. Tires are tube-type and can be removed and mounted by demounting steel rim from aluminum center hub of wheel.

FRONT FORK

SUSPENSION: The front fork suspension is lubricated at the factory. However, occasional lubrication should be accomplished for best operation. The entire front wheel and suspension system can be removed as a unit by removing the two bolts between the yoke plates. Pack each suspension spring with high quality multi-purpose (chassis or wheel-bearing) grease. Reassemble unit securely. On Custom models it is necessary to remove the rear shocks and follow the same procedure for packing with grease as front fork.

BEARINGS: The steering column ball bearings will require occasional lubrication. Remove the steering bolt and the two bearings will be exposed so that a medium weight lubricating oil can be applied. Reassemble unit and adjust bolt and self-locking nut tightness to allow steering freedom as desired.

MISCELLANEOUS

**SEAT
REMOVAL:** The seat is removed by removing the two thumb bolts beneath the seat.

NOTE: See engine manual for engine adjustment and maintenance.