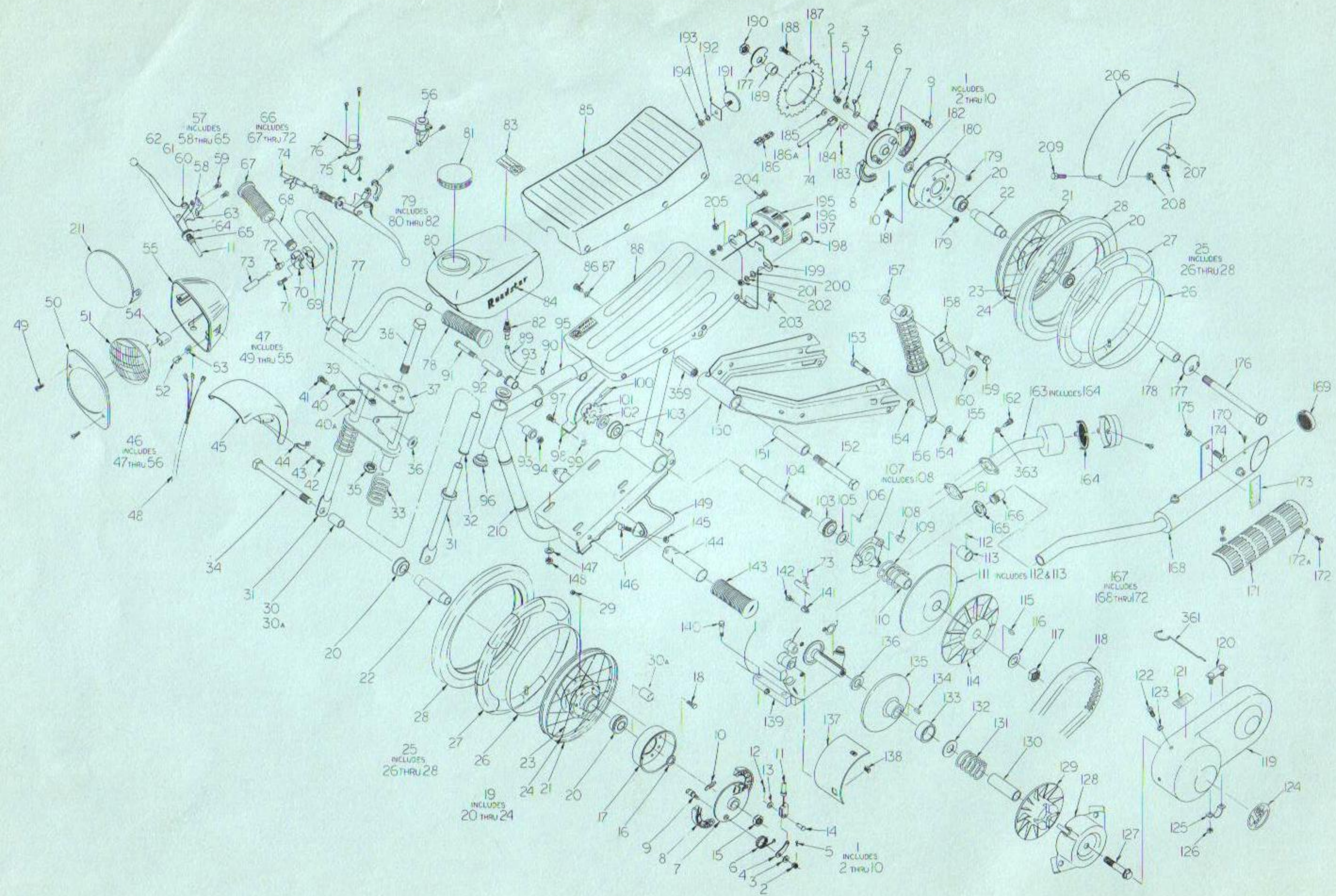
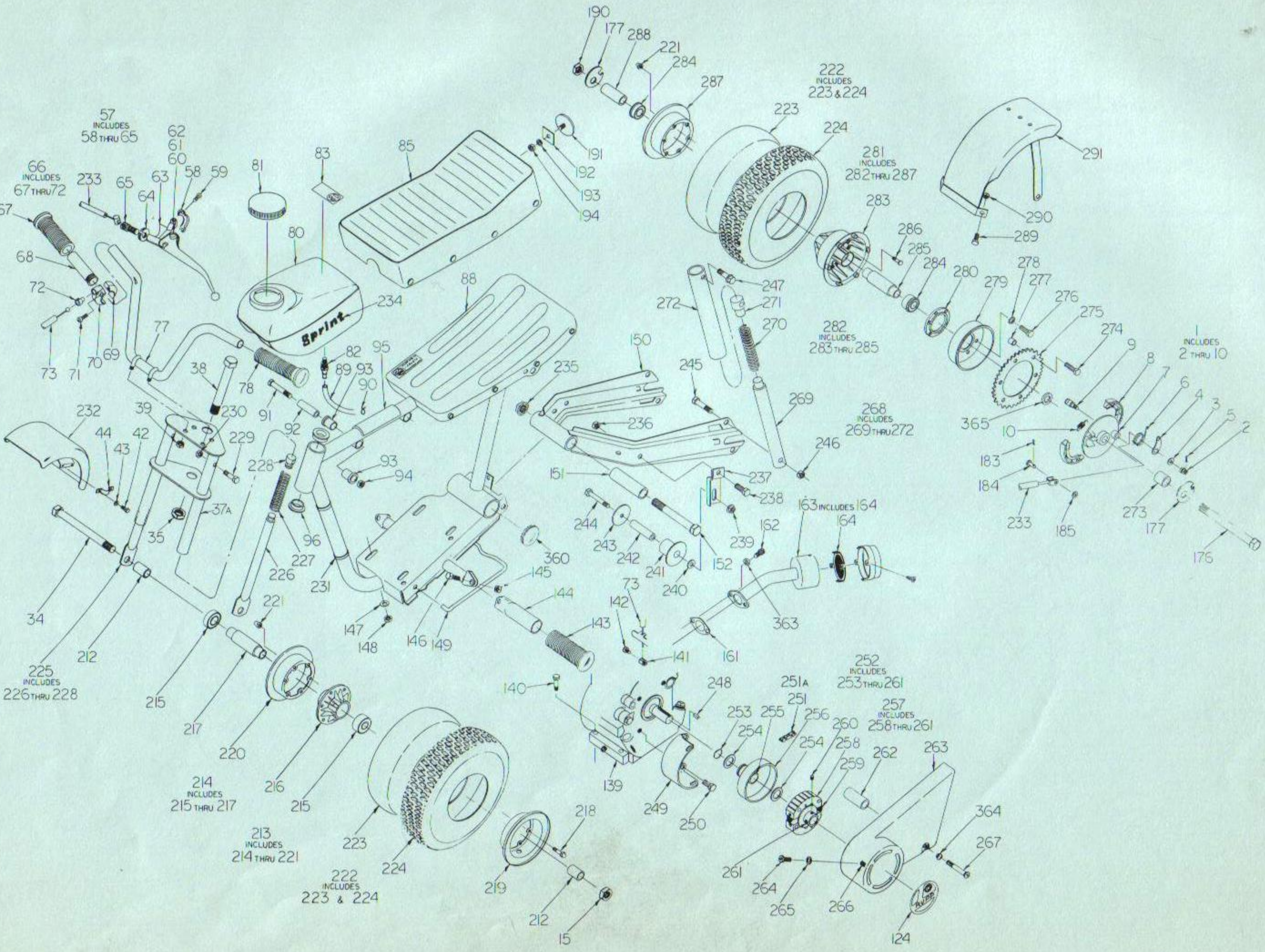


# MINI-CYCLE PARTS DIAGRAM ROADSTER-ENDURO-SCRAMBLER



# MINI-CYCLE PARTS DIAGRAM SPRINT





# MINI-CYCLE PARTS LIST

REF. NO.	DESCRIPTION	PART NO.	ROADSTER	ENDURO	SCRAMBLER	SPRINT	CHOPPER
			NO. REQ'D.	NO. REQ'D.	NO. REQ'D.	NO. REQ'D.	NO. REQ'D.
1	Brake Assembly	15277	2	2	1	1	
2	5/16-24 Castle Nut	14034	2	2	1	1	
3	5/16 S.A.E. Flat Washer	14039	2	2	1	1	
4	Brake Arm	15317	2	2	1	1	
5	1/16x1/2 Cotter Pin	14049	2	2	1	1	
6	Brake Arm Return Spring	13784	2	2	1	1	
7	Backing Plate	15278	2	2	1	1	
8	Brake Shoe	13866	4	4	2	2	
9	Brake Actuator Cam	13782	2	2	1	1	
10	Brake Shoe Return Spring	13781	4	4	2	2	
11	Brake Cable, Front	15293	1	1			
12	1/16x1/2 Cotter Pin	14049	1	1			
13	1/4 S.A.E. Flat Washer	14037	1	1			
14	Clevis Pin	13821	1	1			
15	1/2-20 Conelok Nut	14059	1	1	1	1	
16	Wheel Spacer	15273	1	1			
17	Brake Drum	15276	1	1			
18	1/4-20x5/8 H.H.C.S. Gr. 5	15387	6	6			
19	Wheel Assy.	15350	2	2	2		
20	Bearing	10058	4	4	4		
21	Wheel, Wire	15377	2	2	2		
22	Spacer Bushing	15263	2	2	2		
23	Spoke, Wheel	15588	48	48	48		
24	Nipple, Spoke	15589	48	48	48		
25	Tire & Tube Assy.	15379	2	2	2		
26	Rim Strip	15381	2	2	2		
27	Tube	15380	2	2	2		
28	Tire	15083	2	2	2		
29	1/4-20 Conelok Nut	14028	6	6			
30	Wheel Spacer R F	15581	1	1			
30 A	Wheel Spacer	15275			2		
31	Strut	15215	2	2	2		
32	Fork Bushing	12918	2	2	2		
33	Shock Spring	15238	2	2	2		
34	Front Axle Bolt	15248	1	1	1	1	
35	5/8-18 Conelok Nut	14033	1	1	1	1	
36	Amber Reflector	15383	2	2	2		
37	Fork, Painted	15236	1	1	1		
	Fork, Unpainted	15237	1	1	1		
37A	Fork, Painted	15242				1	
	Fork, Unpainted	15243				1	
38	Steering Column Bolt	11154	1	1	1	1	
39	3/8-16 Conelok Nut	14031	4	4	4	4	
40	5/16 Split Lockwasher	14047	2	2	2		
40A	5/16-18 Hex Nut	14024		2	2		
41	5/16-18x7/8 H.H.C.S.	13999	2				
	5/16-18x1/2 H.H.C.S.	14170		2	2		
42	#14x1/2 Self Tap Sc.	14019	4	4	4	4	
43	1/4 Ext. Tooth Lockwasher	14045	4	4	4	4	
44	Mounting Clamp	10467	2	2	2	2	
45	Front Fender	15247	1	1	1		
46	Hd'lite & Dim Sw. Assy.	15335	1				
47	Dual Beam Hd'lite Assy.	14299	1				
48	Wiring Harness	14252	1				
49	#8-18x1 Self Tap Sc.	14018	2				

# MINI-CYCLE PARTS LIST

REF. NO.	DESCRIPTION	PART NO.	ROADSTER	ENDURO	SCRAMBLER	SPRINT	CHOPPER
			NO. REQ'D.	NO. REQ'D.	NO. REQ'D.	NO. REQ'D.	NO. REQ'D.
50	Headlight Bezel	13795	1				
51	Seal. Dual Beam Hd'lamp	14250	1				
52	"U" Type Speed Clip Fastener	14303	2				
53	5/16-18 Sq. Nut	14026	2				
54	3-Contact Str. Connector	15386	1				
55	Headlight Housing	15420	1				
56	Dimmer Switch	15418	1				
57	Brake Hand Lever, Complete	13812	2	2	1	1	
58	Brake Lever Clamp	13816	2	2	1	1	
59	Fill. Hd. Mach. Sc. 5MM x 18MM	13815	4	4	2	2	
60	Pan. Hd. Mach. Sc. 6MM x 18MM	13959	2	2	1	1	
61	Hex Nut 6MM	13960	2	2	1	1	
62	Ext. Tooth L'wash. 6MM	13961	2	2	1	1	
63	Clamp Casting, Brake Lever	15591	2	2	1	1	
64	Ferrule, Locknut	13814	2	2	1	1	
65	Brake Lever Cable Ferrule	13813	2	2	1	1	
66	Throttle Twist Grip Assy.	11583	1	1	1	1	
67	1" I.D. Rubber Grip	10809	1	1	1	1	
68	Twist Grip Barrel	10511	1	1	1	1	
69	Adaptor Ring	10513	1	1	1	1	
70	Cable Adaptor Ring	10512	1	1	1	1	
71	#10-32x1/2 F.H.M.S.	14017	2	2	2	2	
72	Ferrule, Twist Grip	10514	1	1	1	1	
73	Throttle Cable	15253	1	1	1	1	
74	Brake Cable	15291	1				
	Brake Cable	15292		1	1	1	
75	Kill Switch	13900		1	1		
76	Kill Switch Lead	15432		1	1		
77	Handle Bar	15429	1	1	1	1	
78	7/8" I.D. Rubber Grip	10769	1	1	1	1	
79	Fuel Tank Assy.	15364	1	1	1	1	
80	Fuel Tank	15365	1	1	1	1	
81	Cap	13468	1	1	1	1	
82	Straight Fuel Connector	15419	1	1	1	1	
83	Mfr. Ident. Decal	15542	1	1	1	1	
84	"Roadster" Decal	15476	2				
	"Enduro" Decal	15477		2			
	"Scrambler" Decal	15479			2		
85	Seat	15300	1	1	1	1	
86	1/4-20x1/2 P.H.M.S.	14013	1	1	1		
87	1/4 Ext. Tooth L'wash.	14045	1	1	1		
88	Cycle Frame, Painted	15228	1	1	1	1	
	Cycle Frame, Unpainted	15208	1	1	1	1	
89	Fuel Line 5" Lg.	12698	1	1	1	1	
90	Hose Clamps	12324	2	2	2	2	
91	1/4-20x1-3/4 H.H.C.S.	14165	2	2	2	2	
92	Spacre Bushing	15352	2	2	2	2	
93	Rubber Bushing	15345	4	4	4	4	
94	1/4-20 Conelok Nut	14028	2	2	2	2	
95	Fuel Tank Mtg. Pad	15295	1	1	1	1	
96	Steer. Column Bearing	10107	2	2	2	2	
97	1/4-20x1/2 P.H.M.S.	14013	1	1	1		
98	Rear Chain Guard	15284	1	1	1		
99	1/4-20 Conelok Nut	14028	1	1	1		
100	Roll Pin	12322	1	1	1		

# MINI-CYCLE PARTS LIST

REF. NO.	DESCRIPTION	PART NO.	ROADSTER	ENDURO	SCRAMBLER	SPRINT	CHOPPER
			NO. REQ'D.	NO. REQ'D.	NO. REQ'D.	NO. REQ'D.	NO. REQ'D.
101	11T Sprocket	15310	1	1	1		
	10T Sprocket (Optional)	15282	1	1	1		
	9T Sprocket (Optional)	15401	1	1	1		
102	Spacer	15219	1	1	1		
103	Bearing	10058	2	2	2		
104	Jack Shaft, T. C.	15135	1	1	1		
105	Driven T.C. Spacer	15123	1	1	1		
106	Key 3/16x3/16x7/32	15157	1	1	1		
107	Fixed T.C. Ramp	15136	1	1	1		
108	Wear Block	15782	3	3	3		
109	Driven T.C. Spring	15127	1	1	1		
110	Driven T.C. Sleeve	15130	1	1	1		
111	Movable Driven Flange	15139	1	1	1		
112	Roll Pin	12790	1	1	1		
113	Bearing	15134	1	1	1		
114	Fixed Driven Flange	15108	1	1	1		
115	Key	15311	1	1	1		
116	Tab Lockwasher	15299	1	1	1		
117	5/8-18 Conelok Nut	14033	1	1	1		
118	Belt	15162	1	1	1		
119	T.C. Guard	15283	1	1	1		
120	T.C. Guard Fastener	15540	1	1	1		
121	Caution Decal T.C.	15287	1	1	1		
122	1/4-20x1/2 P.H.M.S.	14013	2	2	2		
123	1/4 Split Lockwasher	14044	2	2	2		
124	Round "Rupp" Decal	13817	2	2	2	2	2
125	Mounting Clamp	10467	1	1	1		
126	1/4-20 Conelok Nut	14028	2	2	2		
127	3/8-24x1-1/2 H.F.W.L.S.	14444	1	1	1		
128	T.C. Weight Brkt. Assy.	15151	1	1	1		
129	Movable Drive Flange	15106	1	1	1		
130	Drive T.C. Bushing	15125	1	1	1		
131	Drive T.C. Spring	15126	1	1	1		
132	Drive T.C. Washer	15131	1	1	1		
133	T.C. Bearing	15153	1	1	1		
134	Key	15311	1	1	1		
135	Fixed Drive T.C. Flange	15105	1	1	1		
136	Motor Shaft Spacer	15391	1	1	1		
137	Mtg. Bracket, T.C. Guard	15384	1	1	1		
138	1/4-20 Speed Nut	10502	2	2	2		
139	Engine, 4 H.P. W/Alt.	15280	1				
	Engine, 4 H.P.	15281		1			
	Engine, 3.5 H.P. 3/4" Shaft	15385			1		
	Engine, 3.5 H.P. 5/8" Shaft	15338				1	
140	5/16-18x1-1/2 H.H.C.S.	14002	4	4	4	4	
141	Cable Stop Clamp	10176	1	1	1	1	1
142	# 8-32x5/16 H.H.M.S.	14016	1	1	1	1	1
143	Pedal Cover	11185	2	2	2	2	
144	Pedal Tube	12382	2	2	2	2	
145	5/16-18 Conelok Nut	14029	2	2	2	2	
146	5/16-18x1 H.H.C.S.	14000	2	2	2	2	
147	5/16 S.A.E. Flat Washer	14039	4	4	4	4	
148	5/16-18 Conelok Nut	14029	4	4	4	4	
149	Kick Stand	15330	1	1	1	1	
150	Swing Frame, Painted	15251	1	1	1	1	

# MINI-CYCLE PARTS LIST

REF. NO.	DESCRIPTION	PART NO.	ROADSTER	ENDURO	SCRAMBLER	SPRINT	CHOPPER
			NO. REQ'D.	NO. REQ'D.	NO. REQ'D.	NO. REQ'D.	NO. REQ'D.
151	Swing Frame, Unpainted	15206	1	1	1	1	
151	Swing Frame, Bushing	15198	1	1	1	1	
152	3/8-16x4 H.H.C.S.	14180	1	1	1	1	
153	3/8-16x1-1/2 H.H.C.S.	14175	2	2	2		
154	5/16 U.S.S. Flat Washer	14040	4	4	4		
155	3/8-16 Conelok Nut	14031	2	2	2		
156	Shock Absorber	15212	2	2	2		
157	Spacer, Top	15231	2	2	2		
158	Rear Reflector Brkt.	15446	2				
159	3/8-16x1-3/4 H.F.W.L.S.	15230	2	2	2		
160	Red Reflector	15286	2				
161	Exhaust Gasket	15593			1	1	
162	1/4-20x5/8 S.H.C.S.	14009			2	2	
163	Spark Arrester	15296			1	1	
164	Screen, Spark Arrester	15594			1	1	
165	1/2 N.P.T. Lock Nut	15514	1	1			
166	Exh. Port Adaptor	15460	1	1			
167	Muffler Assy. Complete	15468	1	1			
168	Muffler	15221	1	1			
169	Screen	15464	1	1			
170	#8x1/4 Sh. Metal Sc.	15472	2	2			
171	Muffler Guard	15469	1	1			
172	#10-32x1/4 P.H.M.S.	14161	2	2			
172A	#10 Ext. Tooth Lockwasher	14502	2	2			
173	Spark Arrestor Decal	15537	1	1	1	1	
174	5/16-18x1/2 H.H.C.S.	14170	1	1			
175	5/16-18 Conelok Nut	14029	1	1			
176	Rear Axle Bolt	15269	1	1	1	1	
177	Chain Tensioner	15250	2	2	2	2	
178	Wheel Spacer	15271	1	1	1		
179	1/4-20 Conelok Nut	14028	12	12	12		
180	Brake & Sprocket Hub	15260	1	1	1		
181	1/4-20x5/8 H.H.C.S. Gr. 5	15387	6	6	6		
182	Wheel Spacer	15273	1	1	1		
183	1/16x1/2 Cotter Pin	14049	1	1	1	1	
184	Clevis Pin	13821	1	1	1	1	
185	1/4 S.A.E. Flat Washer	14037	1	1	1	1	
186	Drive Chain #41 84 Pt.	15402	1	1	1	1	
186A	Master Link #41	15637	1	1	1		
187	54T Plate Sprocket	15268	1	1	1		
188	1/4-20x5/8 H.H.C.S. Gr. 5	15387	6	6	6		
189	Wheel Spacer	15270	1	1	1		
190	1/2-20 Conelok Nut	14059	1	1	1		
191	Red Reflector	11487		1	1	1	
192	Reflector Back-Up Washer	15433	1	1	1	1	
193	#10 Split Lockwasher	14043		1	1	1	
194	#10 Hex Nut	14067		1	1	1	
195	Tail Light, Complete	15220	1				
196	Lens, Tail Light	15288	1				
197	Bulb, Tail Light	12439	1				
198	Red Reflector	15441	2				
199	Rear Fender Bracket	15256	1	1	1		
200	3/16 S.A.E. Flat Washer	14686	2				
201	#10 Split Lockwasher	14043	2				
202	#10 Hex Nut	14067	2				

# MINI-CYCLE PARTS LIST

REF. NO.	DESCRIPTION	PART NO.	ROADSTER	ENDURO	SCRAMBLER	SPRINT	CHOPPER
			NO. REQ'D.	NO. REQ'D.	NO. REQ'D.	NO. REQ'D.	NO. REQ'D.
203	1/4-20x1/2 H.H.C.S.	13992	1	1	1		
204	#10-24x1/2 P.H.M.S.	14798		2	2		
205	#10-24 Conelok Nut	14206		2	2		
206	Rear Fender	15140	1	1	1		
207	Fender Reinf. Plate	15315	1	1	1		
208	1/4-20 Conelok Nut	14028	2	2	2		
209	1/4-20x5/8 H.H.C.S.	14162	1	1	1		
210	Nylon Cable Retainer	10934	7				
	Nylon Cable Retainer	10934		7			
	Nylon Cable Retainer	10934			6		
211	Racing Disc	15346		1	1		
212	Wheel Spacer	15274				2	
213	Fr. Wheel Assy., Less T & T	15261				1	
214	6" Fr. Wheel Casting Assy.	15262				1	
215	Bearing	10429				2	
216	6" Fr. Wheel Casting	11401				1	
217	Spacer Bushing	15263				1	
218	Acorn Wheel Stud # 10-32	11399				6	
219	6" Chrome Rim W/Valve Hole	11396				1	
220	6" Chrome Rim W/O Valve Hole	11573				1	
221	Acorn Nut # 10-32	10257				6	
222	"Trails" Tire & Tube 14 x 6	13808				2	
223	Inner Tube 6"	13809				2	
224	"Trails" Tire 14 x 6	13729				2	
225	Front Shock Assy.	15244				2	
226	Strut	15245				2	
227	Strut Spring	13206				2	
228	Strut Plug, Upper	13203				2	
229	1/4-28x1-1/4 H.H.C.S.	13994				2	
230	1/4-28 Conelok Nut	14027				2	
231	Nylon Cable Retainer	10934				4	1
232	Fr. Fender, Painted	13847				1	
233	Brake Cable, Rear	15292				1	
234	"Sprint" Decal	15478				2	
235	3/8-16 F.W.L.N.	14065				1	
236	3/8-16 Conelok Nut	14031				1	
237	Roller Bracket	15318				1	
238	3/8-16x5/8 H.H.C.S.	15343				1	
239	5/16-18 F.W.L.N.	14035				1	
240	Flat Washer	12477				1	
241	Chain Roller	14770				1	
242	Roller Sleeve	14771				1	
243	Roller Washer	14772				1	
244	5/16-18x1-1/2 H.H.C.S.	14002				1	
245	3/8-16x1-3/8 H.H.C.S.	14355				2	
246	3/8-16 Conelok Nut	14031				2	
247	3/8-16x1-3/4 H.F.W.L.S.	15230				2	
248	Key	12495				1	1
249	Chain Guard Adaptor	10446				1	1
250	5/16-24x1/2 H.H.C.S.	13995				2	2
251	Drive Chain # 35 150 Pt.	15417				1	
251A	Master Link # 35	10326				1	1
252	11T Clutch, Complete <i>13914</i>	<del>14668</del>				1	
253	Clutch Retaining Ring	12456				1	
254	Washer	13946				2	



# MINI-CYCLE PARTS LIST

REF. NO.	DESCRIPTION	PART NO.	ROADSTER	ENDURO	SCRAMBLER	SPRINT	CHOPPER
			NO. REQ'D.	NO. REQ'D.	NO. REQ'D.	NO. REQ'D.	NO. REQ'D.
255	Clutch Bearing	13918				1	
256	11T Drum & Sprocket	13917				1	
257	Drive Hub W/Shoes & Springs	13916				1	
258	Shoes	13949				2	
259	Springs, Brown	13948				2	
260	1/4-28x1/4 Soc. Set Sc.	14021				2	
261	Driven Hub 5/8 Bore	13915				1	
262	Chain Guard Spacer Tube	15240				1	
263	Chain Guard	15285				1	
264	1/4-20x1/2 P.H.M.S.	14013				2	
265	1/4 Split Lock Washer	14044				2	
266	1/4-20 Speed Nut	10502				2	
267	1/4-20x2-3/4 Oval Hd. M.S.	15241				1	
268	Shock Absorber Assy.	15233				2	
269	Rear Shock Extension	15234				2	
270	Rear Shock Spring	11183				2	
271	Upper Shock Plug	11182				2	
272	Rear Shock Sleeve	15252				2	
273	Wheel Spacer	15270				1	
274	1/4-20x7/8 H.H.C.S., Gr. 5 Nylok	15642				6	
275	72T Plate Sprocket	13833				1	
276	1/4-20x7/8 H.H.C.S.	14163				6	
277	Spacer	15249*				6	
278	1/4 Ext. Tooth Lockwasher	14045				6	
279	Brake Drum	13780				1	
280	Brake Drum Spacer	15279				1	
281	6" Rear Whl. Assy., Less T & T	15264				1	
282	6" Cast. W/Brngs. & Studs	15265				1	
283	6" Whl. Casting	14911				1	
284	Bearing	10429				2	
285	Spacer Bushing	15263				1	
286	Wheel Stud # 10-32	10253				6	
287	6" Out. Rim W/Valve Hole	11396				1	
288	Wheel Spacer	15776				1	
289	1/4-20x1/2 H.H.C.S.	13992				2	
290	1/4-20 Conelok Nut	14028				2	
291	Rear Fender, Painted	15257				1	
292	5/8-18 Conelok Nut	14032					2
293	Fr. Wheel Spacer	11489					2
294	6" Fr. Wheel Assy., Less T & T	12965					1
295	6" Fr. Wheel Cast. Assy.	13296					1
296	Bearing	10429					2
297	6" Fr. Whl. Casting	11401					1
298	Spacer Tube	12846					1
299	Acorn Nut # 10-32	10257					6
300	6" Chrome Rim W/Valve Hole	11396					1
301	6" Chrome Rim W/O Valve Hole	11573					1
302	Acorn Wheel Stud # 10-32	11399					6
303	6" Tire & Tube Assy.	11472					2
304	6" Studded Tire	10125					2
305	6" Inner Tube	10124					2
306	5/8-18 Conelok Nut	14033					1
307	Fork, Painted	12526					1
	Fork, Unpainted	11275					1
308	Steering Column Bolt	10111					1

# MINI-CYCLE PARTS LIST

REF. NO.	DESCRIPTION	PART NO.	ROADSTER	ENDURO	SCRAMBLER	SPRINT	CHOPPER
			NO. REQ'D.	NO. REQ'D.	NO. REQ'D.	NO. REQ'D.	NO. REQ'D.
309	Throttle Cable	10140					1
310	Throttle Twist Grip Assy.	11584					1
311	# 10-32x1/2 F.H.M.S.	14017					2
312	Ferrule, Twist Grip	10514					1
313	Cable Adaptor Ring	10512					1
314	Adaptor Ring	10513					1
315	Barrel, Twist Grip	10511					1
316	1" Plastic Grip	10576					1
317	7/8" Plastic Grip	10109					1
318	Tube Plug	12364					2
319	Frame, Painted	12525					1
	Frame, Unpainted	11120					1
320	1/4 Ext. Tooth Lockwasher	14045					2
321	1/4-20x5/8 Thumb Screw	11157					2
322	Brake Spring	10041					1
323	5/16 Split Lockwasher	14047					5
324	5/16-18x1-1/2 H.H.C.S.	14002					5
325	5/16-18 Hex Nut	14024					5
326	Kickstand	13804					1
327	Seat	12499					1
328	Engine, 2.5 H.P.	12178					1
329	11T Clutch	13914					1
330	Clutch Retaining Ring	12456					1
331	Washer	13946					2
332	Clutch Bearing	13918					1
333	11T Drum & Sprocket	13917					1
334	Drive Hub W/Shoes & Springs	13916					1
335	Drive Hub 5/8 Bore	13915					1
336	Springs, Yellow	13908					2
337	Shoes	13907					2
338	1/4-28x1/4 Soc. Set Sc.	14021					2
339	1/4-20 Speed Nut	10502					2
340	1/4-20x1/2 P.H.M.S.	14013					3
341	1/4 Split Lockwasher	14044					3
342	Chain Guard	13837					1
343	Rear Axle	11154					1
344	1/4-20x3/4 H.H.C.S.	13993					6
345	1/4 Split Lockwasher	14044					6
346	Wheel Spacer	12843					1
347	72T Sprocket	13833					1
348	Drive Chain # 35 122 Pt.	12810					1
349	6" Rear Wheel Assy., Less T & T	12845					1
350	6" Cast. W/Brngs. & Studs	13353					1
351	6" Rear Wheel Casting	12835					1
352	Bearing	10429					2
353	Spacer Tube	12846					1
354	Wheel Stud # 10-32	10253					6
355	6" Chrome Rim W/Valve Hole	11396					1
356	Acorn Nut # 10-32	10257					6
357	Wheel Spacer	12844					1
358	"Chopper" Decal	15475					1
359	Chain Guard Spacer	15167	1	1	1		
360	Plug Button	15445				2	
361	T.C. Guard Support	15609	1	1	1		
362	Front Axle	12891					1