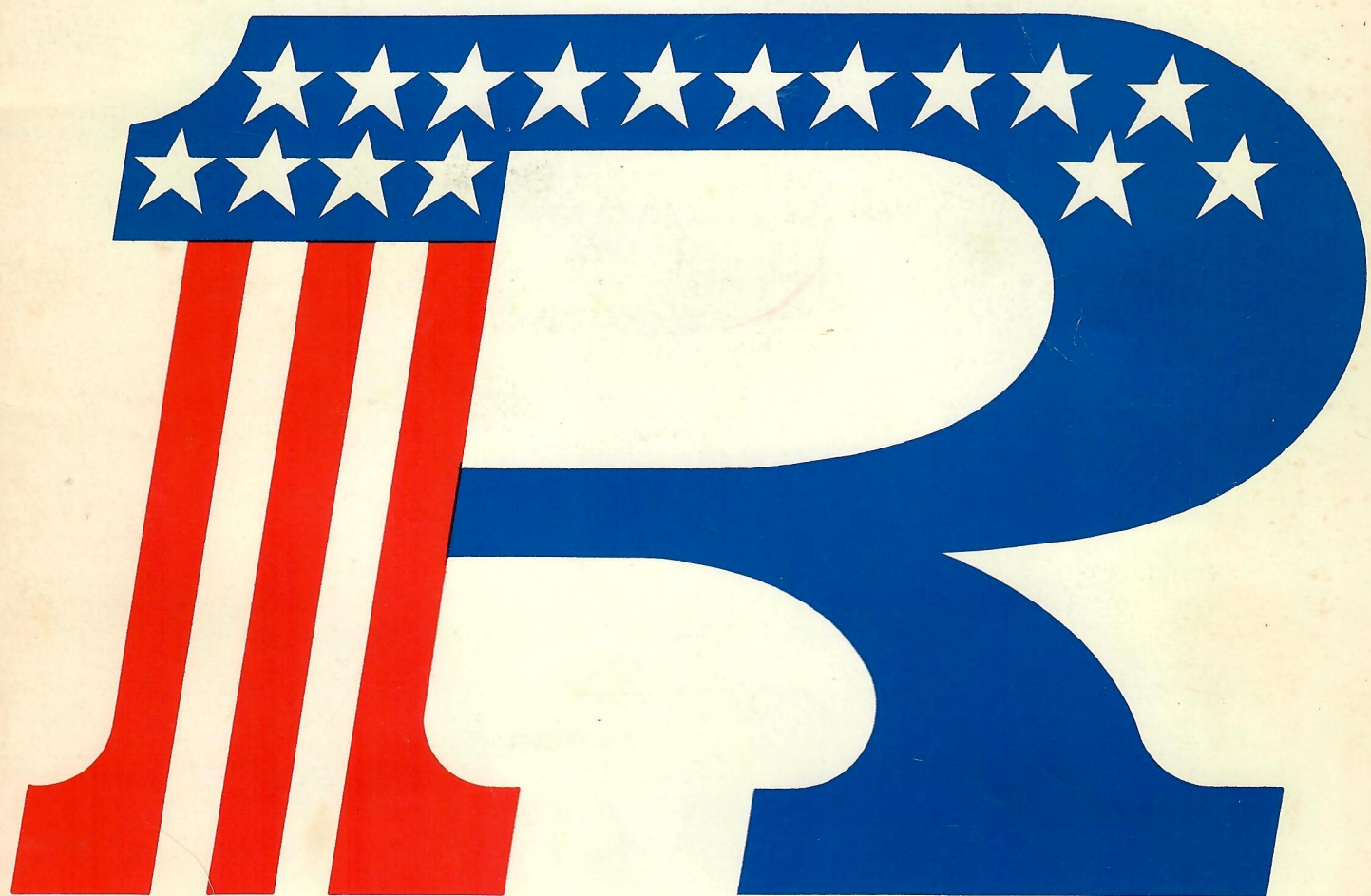


# 1972

## ***RUTTMAN*** **MINI-BIKE CATALOG**



***RUTTMAN COMPANY***

24732 FORD ROAD • DEARBORN HTS., MICHIGAN 48127



# INDEX

Page	Contents
1	RUTTMAN TOAD SPECIFICATIONS
2	RUTTMAN VULTURE SPECIFICATIONS
3	RUTTMAN GOOSE SPECIFICATIONS
4	RUTTMAN SPYDER SPECIFICATIONS
5	RUTTMAN GRASSHOPPER SPECIFICATIONS
6	RUTTMAN ELIMINATOR SPECIFICATIONS
7	RUTTMAN TOAD PARTS ILLUSTRATION
8	RUTTMAN TOAD PARTS LIST
9	RUTTMAN VULTURE PARTS ILLUSTRATION
10	RUTTMAN VULTURE PARTS LIST
11	RUTTMAN GOOSE PARTS ILLUSTRATION
12	RUTTMAN GOOSE PARTS LIST
13	RUTTMAN SPYDER PARTS ILLUSTRATION
14	RUTTMAN SPYDER PARTS LIST
15	RUTTMAN GRASSHOPPER PARTS ILLUSTRATION
16	RUTTMAN GRASSHOPPER PARTS LIST
17	RUTTMAN ELIMINATOR PARTS ILLUSTRATION
18	RUTTMAN ELIMINATOR PARTS LIST
19	MINI-BIKE FORKS AND FRAMES
20	CHROME HANDLEBAR SUSPENSION FORKS
21	CHOPPER FORK, FRAME AND SISSY BAR
22	RUTTMAN SKI-TRAC
23	MINI-BIKE FORK AND FRAME WELD KITS
24	SUSPENSION FORK WELD KITS
25	RUTTMAN PAK MULE FRAME AND SKI WELD KITS
26	CHOPPER FORK, FRAME AND SISSY BAR WELD KITS
27	MISC. MINI-BIKE PARTS
28	MISC. MINI-BIKE PARTS
29	MISC. MINI-BIKE PARTS
30	SHOCK ABSORBERS, KICKSTANDS AND FOOT PEGS
31	WHEELS
32	TIRES
33	CHAIN AND CHAIN LINKS
34	SPROCKETS
35	BRAKE CABLES, ANCHORS, CONTROL LEVERS, RETURN SPRING
36	TWIST GRIP SETS AND THROTTLE CABLES
37	BAND BRAKE KIT
38	FENDERS AND SEATS
39	BEARINGS, BUSHINGS, KEYS, AXLE BOLTS AND NUTS
40	CLUTCHES
41	ENGINE ASSEMBLIES
42	GAS TANKS, STRAPS, FUEL LINE, FITTING AND VELOCITY STACK
43	HIGH PERFORMANCE ENGINE PARTS
44	KICK STARTERS
45	WINDSHIELD, HORN, REAR VIEW MIRROR AND FACESHIELDS
46	DISC BRAKE, WHEELIE BAR, DECALS, PATCHES AND CHAIN BREAKER

TERMS AND POLICY (SEE NEXT PAGE)





MAIL ORDERS TO: **RUTTMAN COMPANY**  
24732 Ford Road  
Dearborn Hts., Michigan 48127

PHONE: (area code 313) 278-5093

BUSINESS HOURS: 9 A.M. to 6 P.M. Monday thru Saturday. Closed Sunday & Holidays.

---

WHEN ORDERING: Please print your name, address, city, state and zip code. Be sure to print legibly or type - so we won't send your stuff to someone else.

---

### TERMS AND POLICY

**PAYMENT:** 50% deposit or send full amount and save C.O.D. charges. Minimum order \$1.00. Orders under \$5.00 must be paid in advance, plus 50¢ for postage and handling. Send money order, cashier check, or certified check to insure immediate processing of your order; any other type of check will cause a three week delay in shipment of your order. Sorry, we cannot extend credit or open accounts.

**SPECIAL HANDLING:** (Ships with first class mail) add 50¢ per package.

**SALES TAX:** Add 4% sales tax to total price of all orders to be received in Michigan.

**WE PAY FREIGHT:** Paid in advance orders OVER \$5.00 are shipped pre-paid except below.

**YOU PAY FREIGHT:** Orders under \$5.00 - Air or other special handling - C.O.D. shipments. Forks, frames, engines and any special offer or dealer sale.

**FOREIGN COUNTRIES:** Irrevocable payment in advance, including estimated freight charges.

**DEALER TERMS:** C.O.D. net. All orders will be shipped C.O.D. unless payment is received with order or prior arrangements have been made for an open account.

**DAMAGED GOODS:** Title to merchandise passes to customer on delivery to carrier. Claims due to damage or pilferage must be reported immediately to delivering carrier for settlement. We package merchandise so that it should arrive in good condition, however, the way it is handled in transit is beyond our control.

**RETURNS:** Write for instructions FIRST, before returning any merchandise. Advise reason for wanting to return and give billing (invoice) number and date of purchase. Any defect in material or workmanship will be replaced to your complete satisfaction, provided you WRITE FIRST. Where the fault is not ours, we reserve the right to deduct a 10% charge for our cost of handling. No cash refund on returned goods. We are not responsible for unauthorized returns.





# RUTTMAN

# bikes

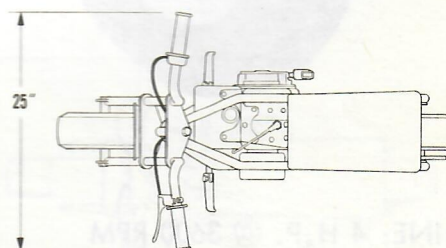
Phone: 313 - 278-5093

24732 Ford Road

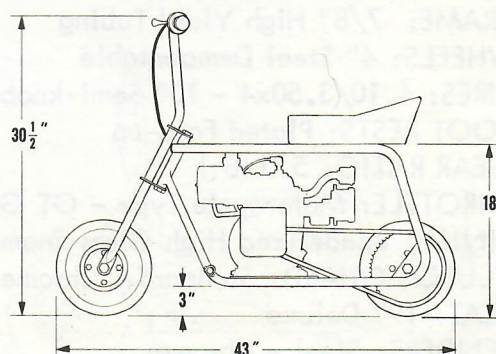
Dearborn Hts., Michigan 48127

## HORNY TOAD MODEL 140

HANDLEBAR HEIGHT: 30½"  
HANDLEBAR WIDTH: 25"  
SEAT HEIGHT: 21"  
OVERALL LENGTH: 43"  
GROUND CLEARANCE: 3"  
WEIGHT: 66 lbs.



ENGINE: 3 H.P. @ 3600 RPM  
BRAKE: Positive, Hand Operated  
CLUTCH: Centrifugal Torque - Automatic  
FRAME: 7/8" High Yield Tubing  
WHEELS: 4" Steel Demountable  
TIRES: 4.10/3.50x4 - 10" Semi-knobby  
FOOT RESTS: Plated Fold-up  
GEAR RATIO: 5.5 to 1  
THROTTLE: Motorcycle Type - GT Grips  
FINISH: Bonderized High Gloss Enamel  
CLUTCH GUARD: Standard - Chrome  
SEAT: 14" Standard  
KICKSTAND: Integral Folding Sidestand



The RUTTMAN TOAD is fully assembled and ready to ride - just add oil and gas.





# RUTTMAN

# mini-bikes

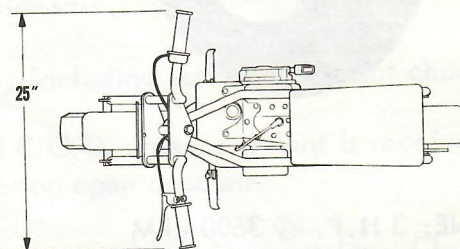
Phone: 313 - 278-5093

24732 Ford Road

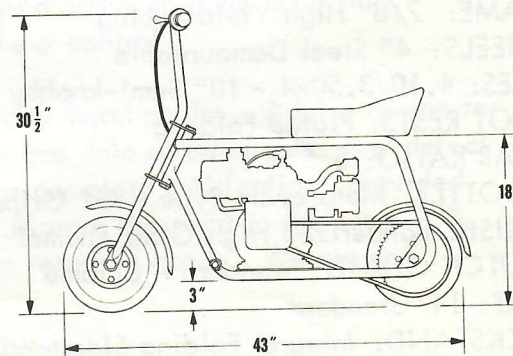
Dearborn Hts., Michigan 48127

## VULTURE MODEL 240

HANDLEBAR HEIGHT: 30½"  
HANDLEBAR WIDTH: 25"  
SEAT HEIGHT: 21"  
OVERALL LENGTH: 43"  
GROUND CLEARANCE: 3"  
WEIGHT: 68 lbs.



ENGINE: 4 H.P. @ 3600 RPM  
BRAKE: Positive, Hand Operated  
CLUTCH: Centrifugal Torque - Automatic  
FRAME: 7/8" High Yield Tubing  
WHEELS: 4" Steel Demountable  
TIRES: 4.10/3.50x4 - 10" Semi-knobby  
FOOT RESTS: Plated Fold-up  
GEAR RATIO: 5.5 to 1  
THROTTLE: Motorcycle Type - GT Grips  
FINISH: Bonderized High Gloss Enamel  
CLUTCH GUARD: Standard - Chrome  
SEAT: 19" Deluxe  
FENDERS: Steel - Chrome  
KICKSTAND: Integral Folding Sidestand



The RUTTMAN VULTURE is fully assembled and ready to ride - just add oil and gas.





# RUTTMAN

# bikes

Phone: 313 - 278-5093

24732 Ford Road

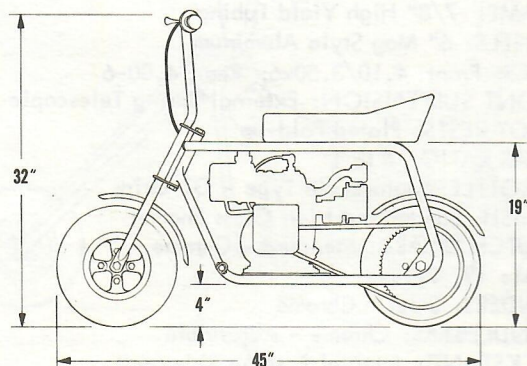
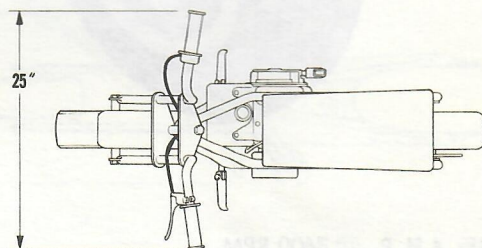
Dearborn Hts., Michigan 48127

## WILD GOOSE MODEL 250

HANDLEBAR HEIGHT: 32"  
HANDLEBAR WIDTH: 25"  
SEAT HEIGHT: 22"  
OVERALL LENGTH: 45"  
GROUND CLEARANCE: 4"  
WEIGHT: 69 lbs.



ENGINE: 4 H.P. @ 3600 RPM  
BRAKE: Positive, Hand Operated  
CLUTCH: Centrifugal Torque - Automatic  
FRAME: 7/8" High Yield Tubing  
WHEELS: 6" Mag Style Aluminum  
TIRES: 4.10/3.50x6 - 12.5" Semi-knobby  
FOOT RESTS: Plated Fold-up  
GEAR RATIO: 6 to 1  
THROTTLE: Motorcycle Type - GT Grips  
FINISH: Bonderized High Gloss Enamel  
CLUTCH GUARD: Standard - Chrome  
SEAT: 19" Deluxe  
FENDERS: Steel - Chrome  
KICKSTAND: Integral Folding Sidestand



The RUTTMAN WILD GOOSE is fully assembled and ready to ride - just add oil and gas.





# RUTTMAN

# mini-bikes

Phone: 313 - 278-5093

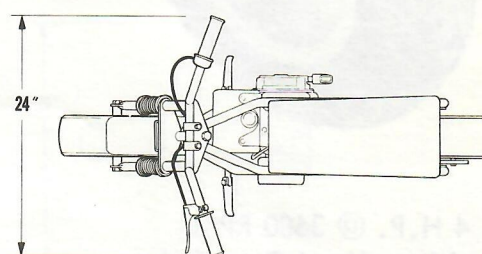
24732 Ford Road

Dearborn Hts., Michigan 48127

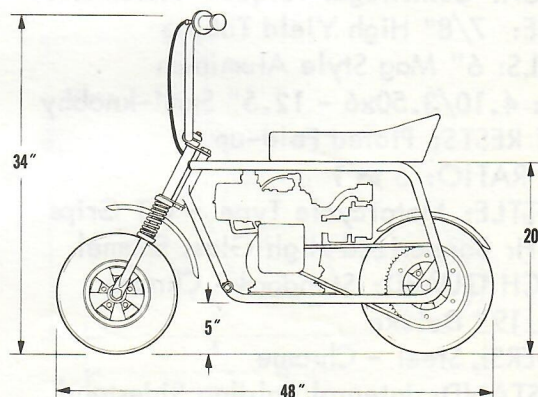
## SPYDER

### MODEL 256S

HANDLEBAR HEIGHT: 34"  
HANDLEBAR WIDTH: 24"  
SEAT HEIGHT: 23"  
OVERALL LENGTH: 48"  
GROUND CLEARANCE: 5"  
WEIGHT: 75 lbs.



ENGINE: 4 H.P. @ 3600 RPM  
BRAKE: Positive, Hand Operated  
CLUTCH: Centrifugal Torque - Automatic  
FRAME: 7/8" High Yield Tubing  
WHEELS: 6" Mag Style Aluminum  
TIRES: Front: 4.10/3.50x6; Rear: 4.00-6  
FRONT SUSPENSION: External Spring Telescopic  
FOOT RESTS: Plated Fold-up  
GEAR RATIO: 6 to 1  
THROTTLE: Motorcycle Type - GT Grips  
FINISH: Bonderized High Gloss Enamel  
CLUTCH GUARD: Standard - Chrome  
SEAT: 19" Deluxe  
FENDERS: Steel - Chrome  
HANDLEBARS: Chrome - Adjustable  
KICKSTAND: Integral Folding Sidestand



The RUTTMAN SPYDER is fully assembled and ready to ride - just add oil and gas.





# RUTTMAN

# bikes

Phone: 313 - 278-5093

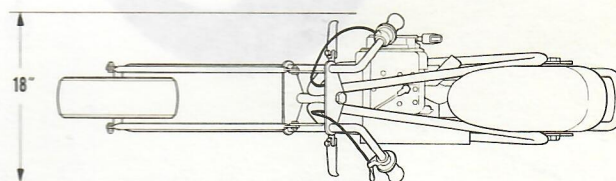
24732 Ford Road

Dearborn Hts., Michigan 48127

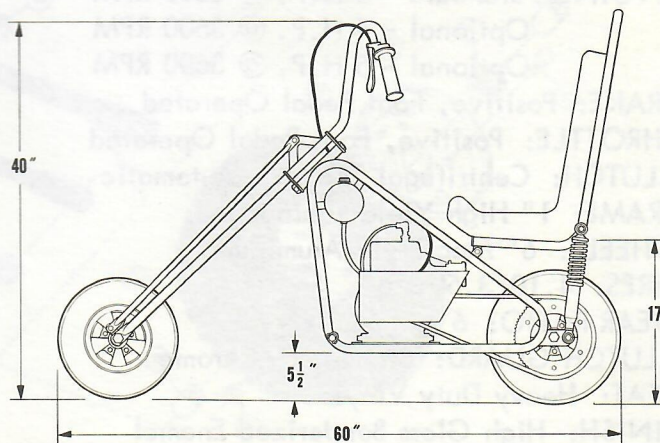
## GRASSHOPPER

### MODEL 260

HANDLEBAR HEIGHT: 40"  
HANDLEBAR WIDTH: 18"  
SEAT HEIGHT: 20"  
OVERALL LENGTH: 60"  
GROUND CLEARANCE: 5½"  
WEIGHT: 86 lbs.



ENGINE: 4 H.P. @ 3600 RPM  
BRAKE: Positive, Hand Operated  
CLUTCH: Centrifugal Torque - Automatic  
FRAME: 7/8" High Yield Tubing  
WHEELS: 6" Mag Style Aluminum  
TIRES: Front: 4.10/3.50x6; Rear: 4.00-6  
FOOT RESTS: Plated Fold-up  
GEAR RATIO: 5.8 to 1  
THROTTLE: Motorcycle Type - GT Grips  
FINISH: Bonderized High Gloss Enamel  
CHAIN GUARD: Deluxe Chrome  
SEAT: Deluxe Contoured High Back  
REAR SUSPENSION: External Spring Shocks  
KICKSTAND: Integral Folding Sidestand



The RUTTMAN GRASSHOPPER is fully assembled and ready to ride - just add oil and gas.





# RUTTMAN

# Mini-Bikes

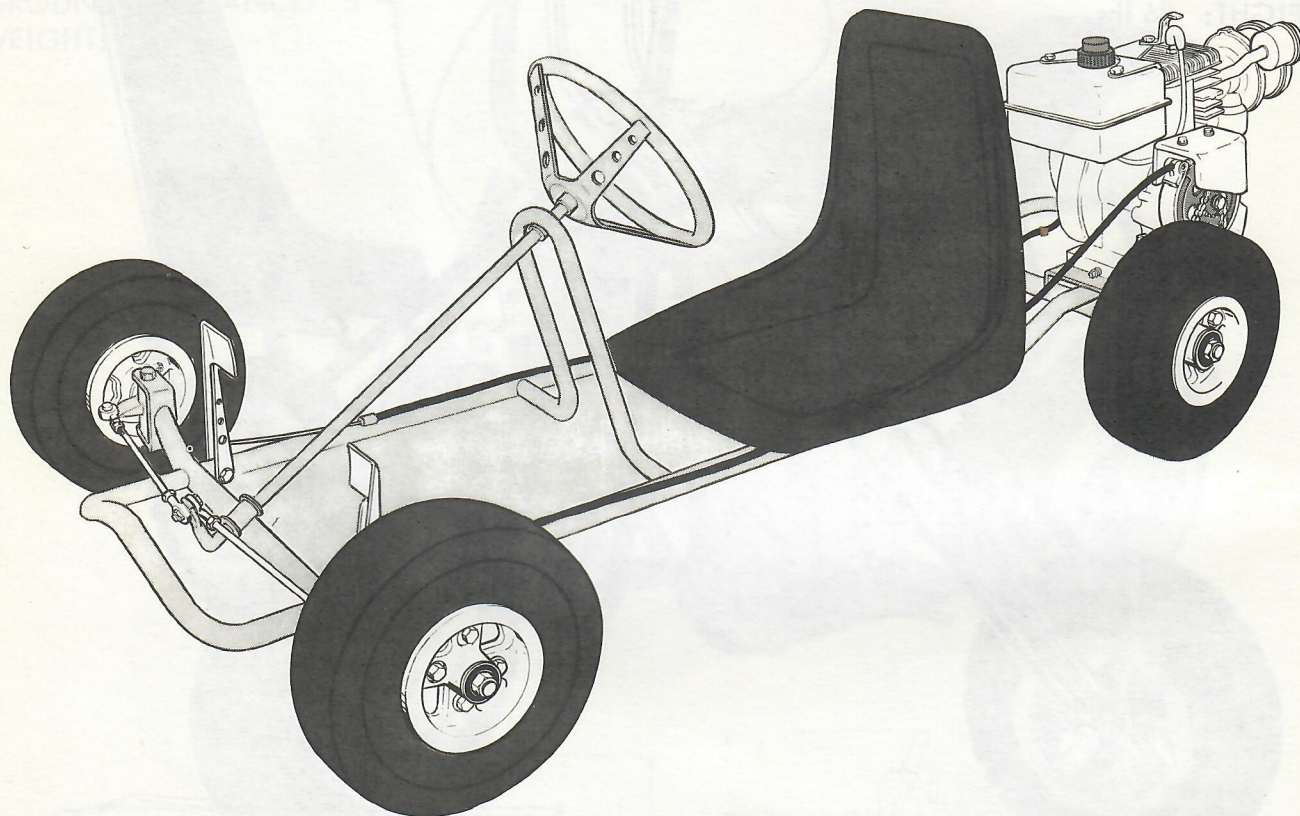
Phone: 313 - 278-5093

24732 Ford Road

Dearborn Hts., Michigan 48127

## ELIMINATOR FUN KART

OVERALL HEIGHT: 21"  
OVERALL LENGTH: 63"  
OVERALL WIDTH: 32"  
WHEELBASE: 44"  
GROUND CLEARANCE: 3½"  
WEIGHT: 92 lbs.



ENGINE: Standard - 3 H.P. @ 3600 RPM  
Optional - 4 H.P. @ 3600 RPM  
Optional - 5 H.P. @ 3600 RPM

BRAKE: Positive, Foot Pedal Operated

THROTTLE: Positive, Foot Pedal Operated

CLUTCH: Centrifugal Torque - Automatic

FRAME: 1" High Yield Tubing

WHEELS: 6" Mag Style Aluminum

TIRES: 4.10/3.50 x 6"

GEAR RATIO: 6 to 1

CLUTCH GUARD: Standard - Chrome

SEAT: Heavy Duty Vinyl

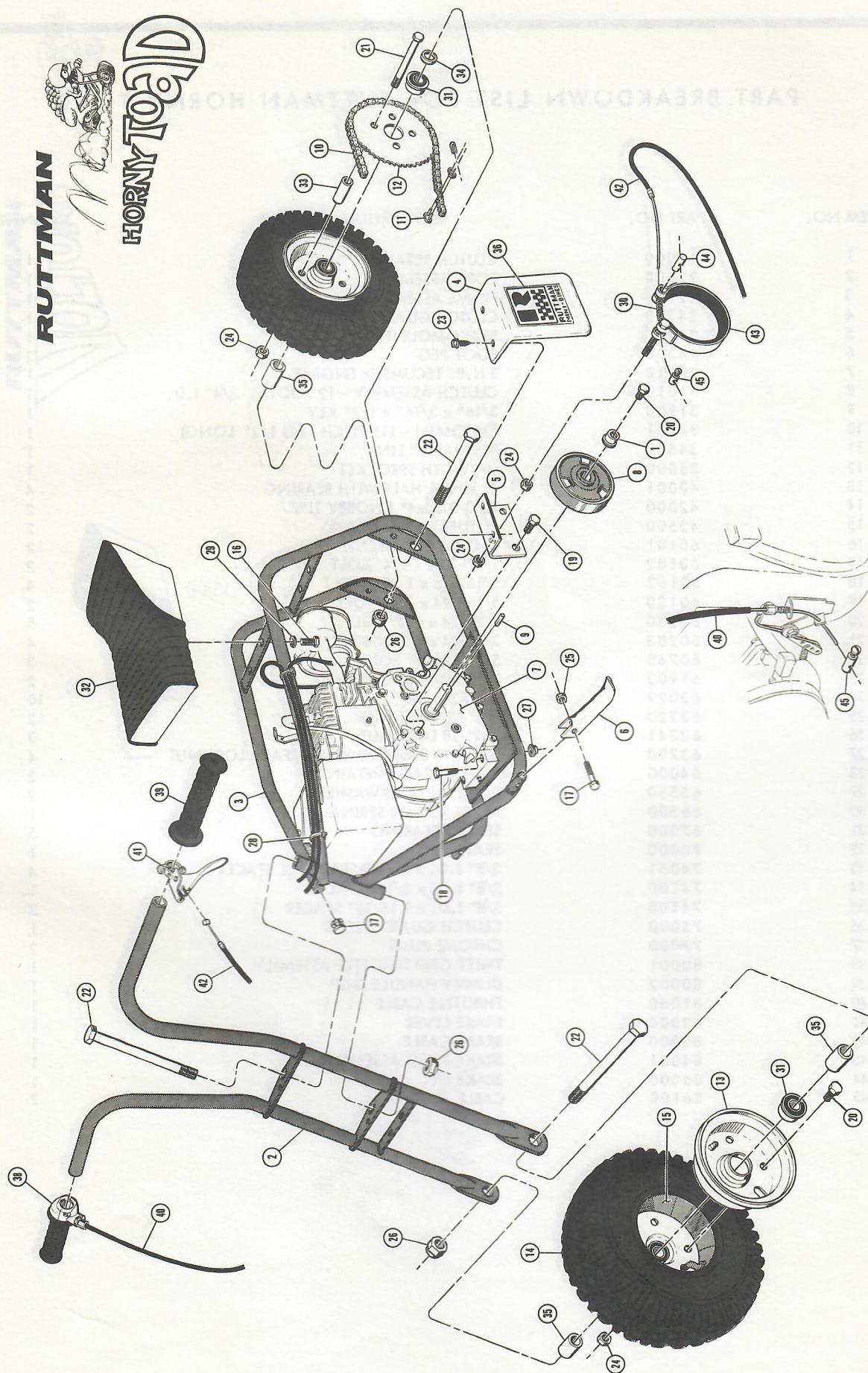
FINISH: High Gloss Bonderized Enamel

The RUTTMAN ELIMINATOR is fully assembled and ready to ride - just add oil and gas.



**RUTTMAN**

**HORN TOAD**







# RUTTMAN

# Bikes

Phone: 313 - 278-5093

24732 Ford Road

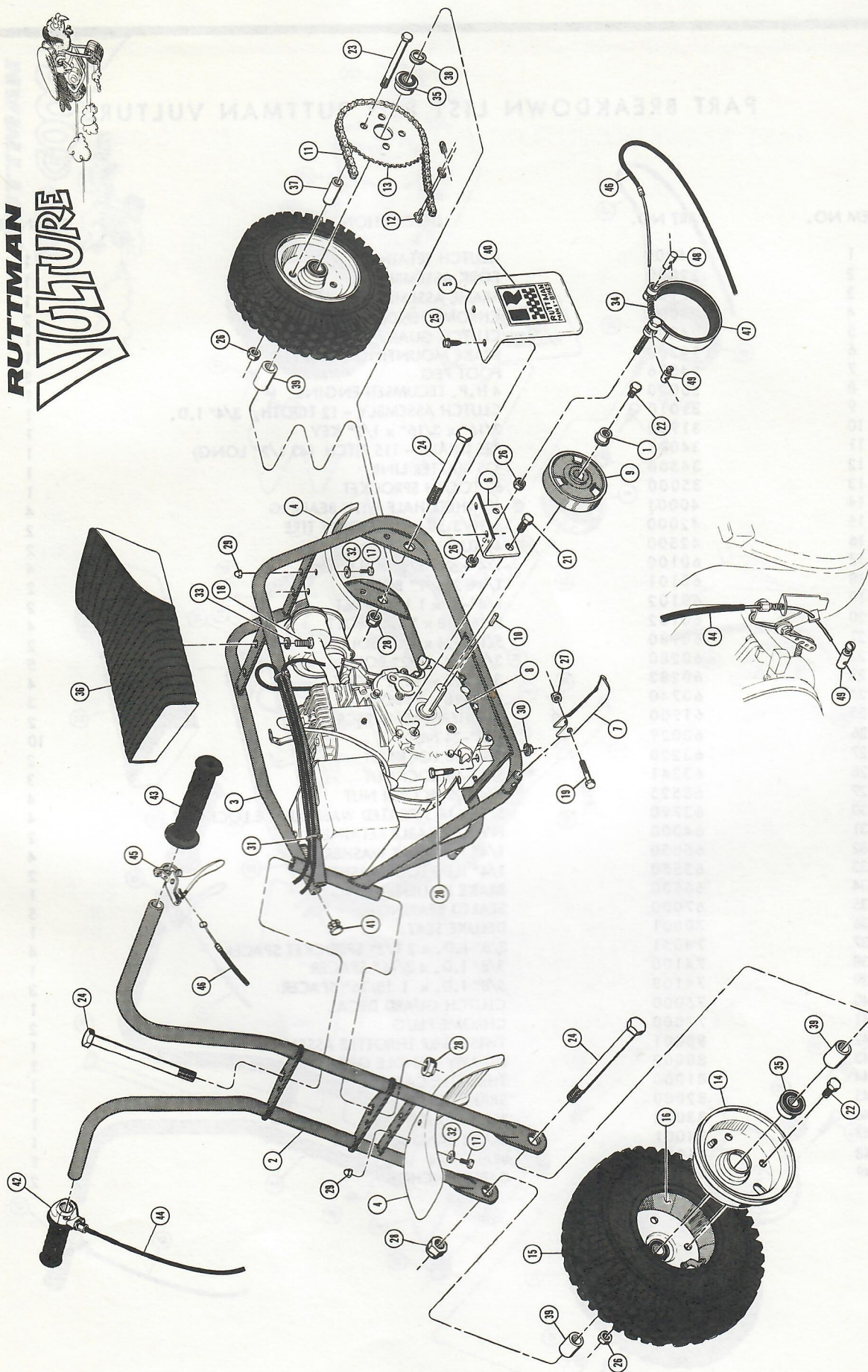
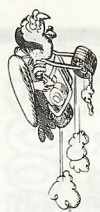
Dearborn Hts., Michigan 48127

## PART BREAKDOWN LIST FOR RUTTMAN HORNY TOAD

ITEM NO.	PART NO.	DESCRIPTION	QUANTITY
1	16000	CLUTCH RETAINER	1
2	22000	FORK ASSEMBLY	1
3	22100	FRAME ASSEMBLY	1
4	24300	CLUTCH GUARD	1
5	24303	BRAKE MOUNTING BRACKET	1
6	24306	FOOT PEG	2
7	30010	3 H.P. TECUMSEH ENGINE	1
8	31010	CLUTCH ASSEMBLY - 12 TOOTH, 3/4" I.D.	1
9	31900	3/16" x 3/16" x 1/2" KEY	1
10	34001	#35 CHAIN - 115 PITCH (43 1/2" LONG)	1
11	34500	#35 MASTER LINK	1
12	35000	60 TOOTH SPROCKET	1
13	40001	4" WHEEL HALF WITH BEARING	4
14	42000	4.10/3.50x4" KNOBBY TIRE	2
15	42500	4" TUBE	2
16	60101	1/4"-20 x 1" BOLT	2
17	60102	1/4"-20 x 1 1/4" BOLT	2
18	60162	5/16"-18 x 1 1/2" BOLT	4
19	60180	5/16"-24 x 1/2" BOLT	2
20	60280	3/8"-24 x 1/2" BOLT	5
21	60283	3/8"-24 x 3 1/2" BOLT	4
22	60740	5/8"-18 x 7" BOLT	3
23	61900	WASHERHEAD CAPSCREW	2
24	63029	3/8"-24 NUT	10
25	63220	1/4"-20 LOCKNUT	2
26	63341	5/8"-18 LOCKNUT	3
27	63790	5/16"-18 SERRATED WASHERFACE LOCKNUT	4
28	64000	NYLON CABLE RETAINER	2
29	65550	1/4" I.D. LOCKWASHER	2
30	66500	BRAKE RETURN SPRING	1
31	67000	SEALED BEARING	5
32	70000	SEAT	1
33	74051	3/8" I.D. x 2 1/2" SPROCKET SPACER	4
34	74100	5/8" I.D. x 3/16" SPACER	1
35	74108	5/8" I.D. x 1 15/16" SPACER	3
36	75000	CLUTCH GUARD DECAL	1
37	77000	CHROME PLUG	2
38	80001	TWIST GRIP THROTTLE ASSEMBLY	1
39	80002	DUMMY HANDLE GRIP	1
40	81000	THROTTLE CABLE	1
41	82000	BRAKE LEVER	1
42	83000	BRAKE CABLE	1
43	84001	BRAKE BAND ASSEMBLY	1
44	86000	BRAKE PIN	1
45	86100	CABLE ANCHOR	2



# **RUTTMAN** **VULTURE**





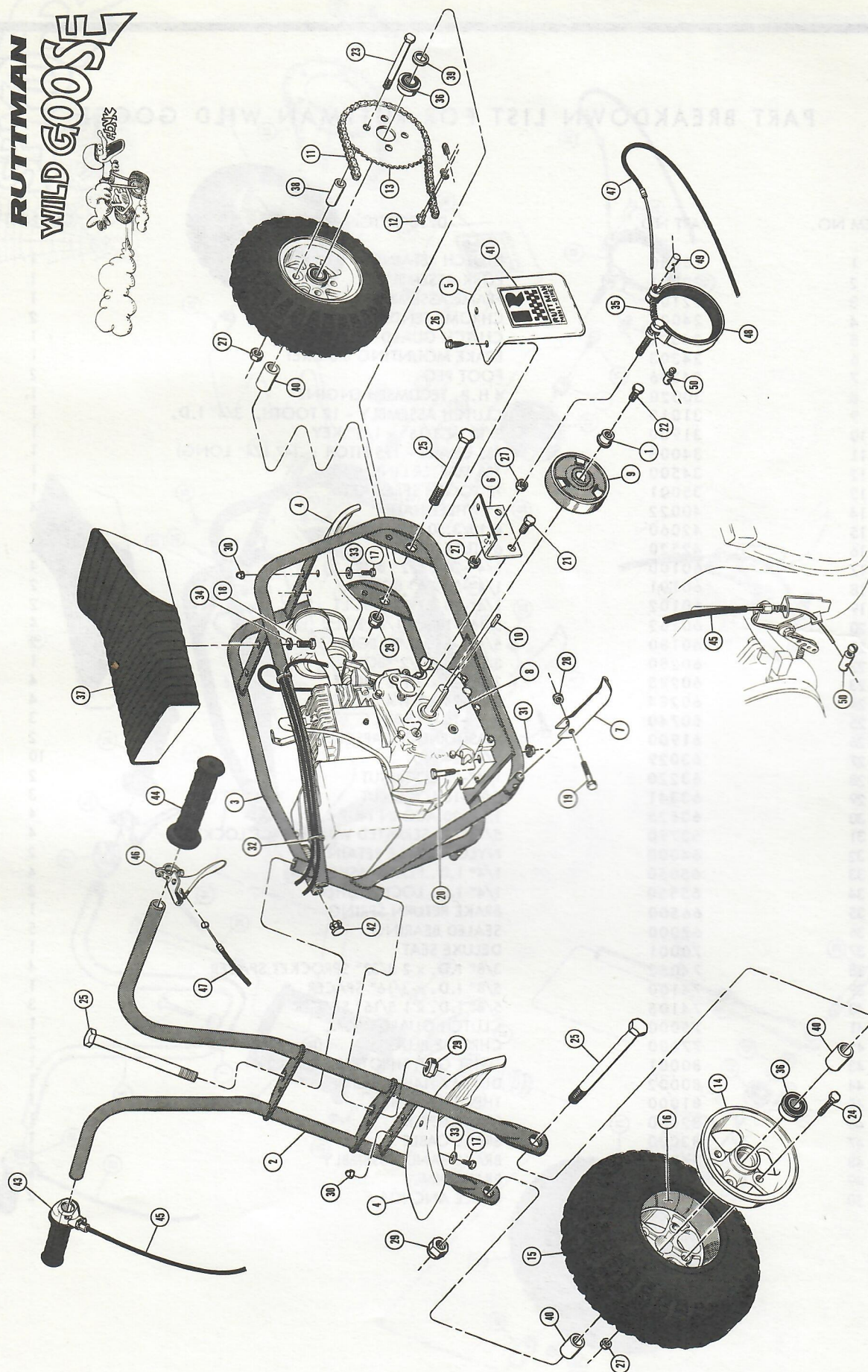


## PART BREAKDOWN LIST FOR RUTTMAN VULTURE

ITEM NO.	PART NO.	DESCRIPTION	QUANTITY
1	16000	CLUTCH RETAINER	1
2	22000	FORK ASSEMBLY	1
3	22100	FRAME ASSEMBLY	1
4	24000	CHROME FENDER	2
5	24300	CLUTCH GUARD	1
6	24303	BRAKE MOUNTING BRACKET	1
7	24306	FOOT PEG	2
8	30020	4 H.P. TECUMSEH ENGINE	1
9	31010	CLUTCH ASSEMBLY - 12 TOOTH, 3/4" I.D.	1
10	31900	3/16" x 3/16" x 1/2" KEY	1
11	34001	#35 CHAIN - 115 PITCH (43 1/2" LONG)	1
12	34500	#35 MASTER LINK	1
13	35000	60 TOOTH SPROCKET	1
14	40001	4" WHEEL HALF WITH BEARING	4
15	42000	4.10/3.50 x 4" KNOBBY TIRE	2
16	42500	4" TUBE	2
17	60100	1/4"-20 x 1/2" BOLT	4
18	60101	1/4"-20 x 1" BOLT	2
19	60102	1/4"-20 x 1 1/4" BOLT	2
20	60162	5/16"-18 x 1 1/2" BOLT	4
21	60180	5/16"-24 x 1/2" BOLT	2
22	60280	3/8"-24 x 1/2" BOLT	5
23	60283	3/8"-24 x 3 1/2" BOLT	4
24	60740	5/8"-18 x 7" BOLT	3
25	61900	WASHERHEAD CAPSCREW	2
26	63029	3/8"-24 NUT	10
27	63220	1/4"-20 LOCKNUT	2
28	63341	5/8"-18 LOCKNUT	3
29	63525	1/4"-20 ACORN NUT	4
30	63790	5/16"-18 SERRATED WASHERFACE LOCKNUT	4
31	64000	NYLON CABLE RETAINER	2
32	65050	1/4" I.D. FLAT WASHER	4
33	65550	1/4" I.D. LOCKWASHER	2
34	66500	BRAKE RETURN SPRING	1
35	67000	SEALED BEARING	5
36	70001	DELUXE SEAT	1
37	74051	3/8" I.D. x 2 1/2" SPROCKET SPACER	4
38	74100	5/8" I.D. x 3/16" SPACER	1
39	74108	5/8" I.D. x 1 15/16" SPACER	3
40	75000	CLUTCH GUARD DECAL	1
41	77000	CHROME PLUG	2
42	80001	TWIST GRIP THROTTLE ASSEMBLY	1
43	80002	DUMMY HANDLE GRIP	1
44	81000	THROTTLE CABLE	1
45	82000	BRAKE LEVER	1
46	83000	BRAKE CABLE	1
47	84001	BRAKE BAND ASSEMBLY	1
48	86000	BRAKE PIN	1
49	86100	CABLE ANCHOR	2



# **RUTTMAN** **WILD GOOSE**







# RUTTMAN

# Mini-bikes

Phone: 313 - 278-5093

24732 Ford Road

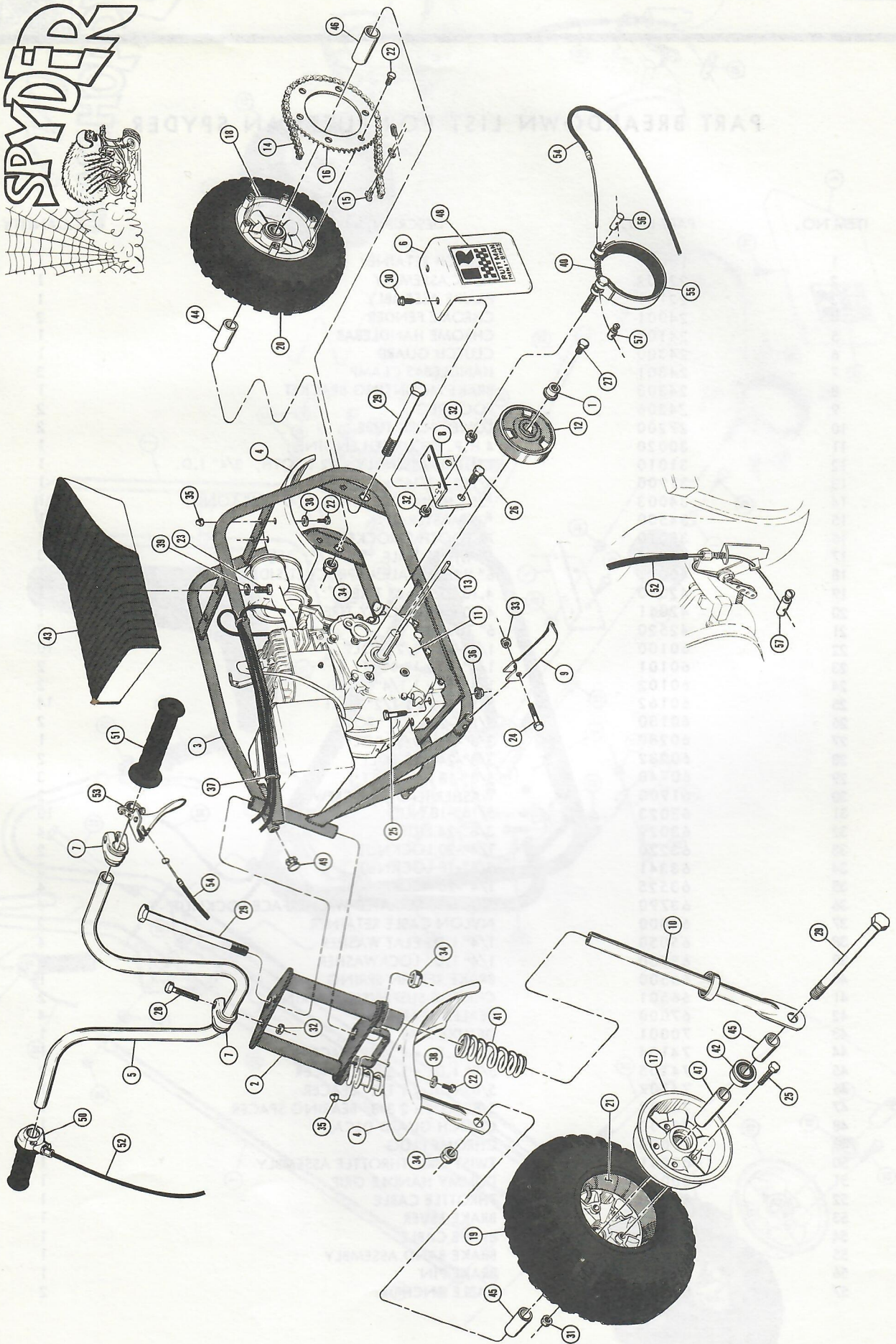
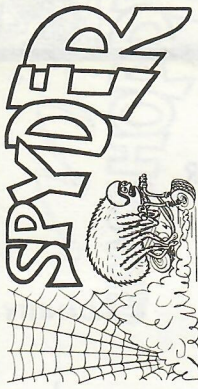
Dearborn Hts., Michigan 48127

## PART BREAKDOWN LIST FOR RUTTMAN WILD GOOSE

ITEM NO.	PART NO.	DESCRIPTION	QUANTITY
1	16000	CLUTCH RETAINER	1
2	22001	FORK ASSEMBLY	1
3	22101	FRAME ASSEMBLY	1
4	24001	CHROME FENDER	2
5	24300	CLUTCH GUARD	1
6	24303	BRAKE MOUNTING BRACKET	1
7	24306	FOOT PEG	2
8	30020	4 H.P. TECUMSEH ENGINE	1
9	31010	CLUTCH ASSEMBLY - 12 TOOTH, 3/4" I.D.	1
10	31900	3/16" x 3/16" x 1/2" KEY	1
11	34003	#35 CHAIN - 125 PITCH (47 1/4" LONG)	1
12	34500	#35 MASTER LINK	1
13	35001	72 TOOTH SPROCKET	1
14	40022	6" WHEEL HALF	4
15	42060	4.10/3.50 x 6" TIRE	2
16	42520	6" TUBE	2
17	60100	1/4"-20 x 1/2" BOLT	4
18	60101	1/4"-20 x 1" BOLT	2
19	60102	1/4"-20 x 1 1/4" BOLT	2
20	60162	5/16"-18 x 1 1/2" BOLT	4
21	60180	5/16"-24 x 1/2" BOLT	2
22	60280	3/8"-24 x 1/2" BOLT	1
23	60283	3/8"-24 x 3 1/2" BOLT	4
24	60284	3/8"-24 x 1 1/4" BOLT	4
25	60740	5/8"-18 x 7" BOLT	3
26	61900	WASHERHEAD CAPSCREW	2
27	63029	3/8"-24 NUT	10
28	63220	1/4"-20 LOCKNUT	2
29	63341	5/8"-18 LOCKNUT	3
30	63525	1/4"-20 ACORN NUT	4
31	63790	5/16"-18 SERRATED WASHERFACE LOCKNUT	4
32	64000	NYLON CABLE RETAINER	2
33	65050	1/4" I.D. FLAT WASHER	4
34	65550	1/4" I.D. LOCKWASHER	2
35	66500	BRAKE RETURN SPRING	1
36	67000	SEALED BEARING	5
37	70001	DELUXE SEAT	1
38	74052	3/8" I.D. x 2 3/32" SPROCKET SPACER	4
39	74100	5/8" I.D. x 3/16" SPACER	1
40	74105	5/8" I.D. x 1 5/16" SPACER	3
41	75000	CLUTCH GUARD DECAL	1
42	77000	CHROME PLUG	2
43	80001	TWIST GRIP THROTTLE ASSEMBLY	1
44	80002	DUMMY HANDLE GRIP	1
45	81000	THROTTLE CABLE	1
46	82000	BRAKE LEVER	1
47	83000	BRAKE CABLE	1
48	84001	BRAKE BAND ASSEMBLY	1
49	86000	BRAKE PIN	1
50	86100	CABLE ANCHOR	2



**RUTTMAN**







# RUTTMAN

Phone: 313 - 278-5093

24732 Ford Road

**Bikes**  
Dearborn Hts., Michigan 481

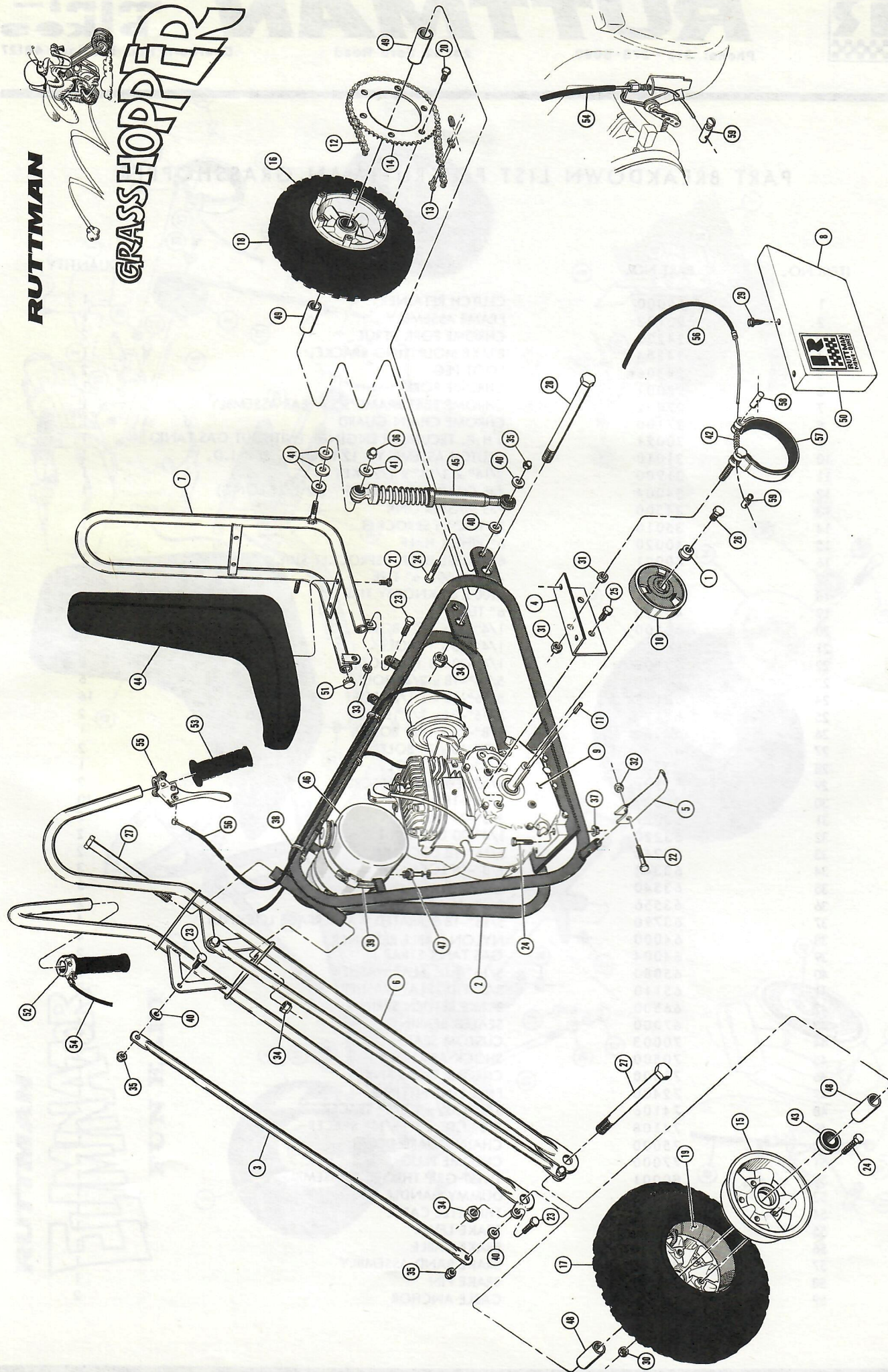
## PART BREAKDOWN LIST FOR RUTTMAN SPYDER

ITEM NO.	PART NO.	DESCRIPTION	QUANTITY
1	16000	CLUTCH RETAINER	1
2	22002	FORK ASSEMBLY	1
3	22101	FRAME ASSEMBLY	1
4	24001	CHROME FENDER	2
5	24100	CHROME HANDLEBAR	1
6	24300	CLUTCH GUARD	1
7	24301	HANDLEBAR CLAMP	2
8	24303	BRAKE MOUNTING BRACKET	1
9	24306	FOOT PEG	2
10	27200	LOWER FORK TUBE	2
11	30020	4 H.P. TECUMSEH ENGINE	1
12	31010	CLUTCH ASSEMBLY - 12 TOOTH, 3/4" I.D.	1
13	31900	3/16" x 3/16" x 1/2" KEY	1
14	34003	#35 CHAIN - 125 PITCH (47 1/4" LONG)	1
15	34500	#35 MASTER LINK	1
16	35010	72 TOOTH SPROCKET	1
17	40020	6" WHEEL HALF	3
18	40021	6" WHEEL HALF - SPROCKET SIDE	1
19	42060	4.10/3.50 x 6" TIRE	1
20	42061	4.00 x 6" KNOBBY TIRE	1
21	42520	6" TUBE	2
22	60100	1/4"-20 x 1/2" BOLT	10
23	60101	1/4"-20 x 1" BOLT	2
24	60102	1/4"-20 x 1 1/4" BOLT	2
25	60162	5/16"-18 x 1 1/2" BOLT	14
26	60180	5/16"-24 x 1/2" BOLT	2
27	60280	3/8"-24 x 1/2" BOLT	1
28	60282	3/8"-24 x 2" BOLT	2
29	60740	5/8"-18 x 7" BOLT	3
30	61900	WASHERHEAD CAPSCREW	2
31	63023	5/16"-18 NUT	10
32	63029	3/8"-24 NUT	4
33	63220	1/4"-20 LOCKNUT	2
34	63341	5/8"-18 LOCKNUT	3
35	63525	1/4"-20 ACORN NUT	4
36	63790	5/16"-18 SERRATED WASHERFACE LOCKNUT	4
37	64000	NYLON CABLE RETAINER	2
38	65050	1/4" I.D. FLAT WASHER	4
39	65550	1/4" I.D. LOCKWASHER	2
40	66500	BRAKE RETURN SPRING	1
41	66501	CHROME SUSPENSION SPRING	2
42	67000	SEALED BEARING	4
43	70001	DELUXE SEAT	1
44	74104	5/8" I.D. x 1 1/4" SPACER	1
45	74105	5/8" I.D. x 1 5/16" SPACER	2
46	74107	5/8" I.D. x 1 1/2" SPACER	1
47	74109	5/8" I.D. x 2 3/8" BEARING SPACER	1
48	75000	CLUTCH GUARD DECAL	1
49	77000	CHROME PLUG	2
50	80001	TWIST GRIP THROTTLE ASSEMBLY	1
51	80002	DUMMY HANDLE GRIP	1
52	81000	THROTTLE CABLE	1
53	82000	BRAKE LEVER	1
54	83000	BRAKE CABLE	1
55	84001	BRAKE BAND ASSEMBLY	1
56	86000	BRAKE PIN	1
57	86100	CABLE ANCHOR	2



**RUTTMAN**

**GRASSHOPPER**





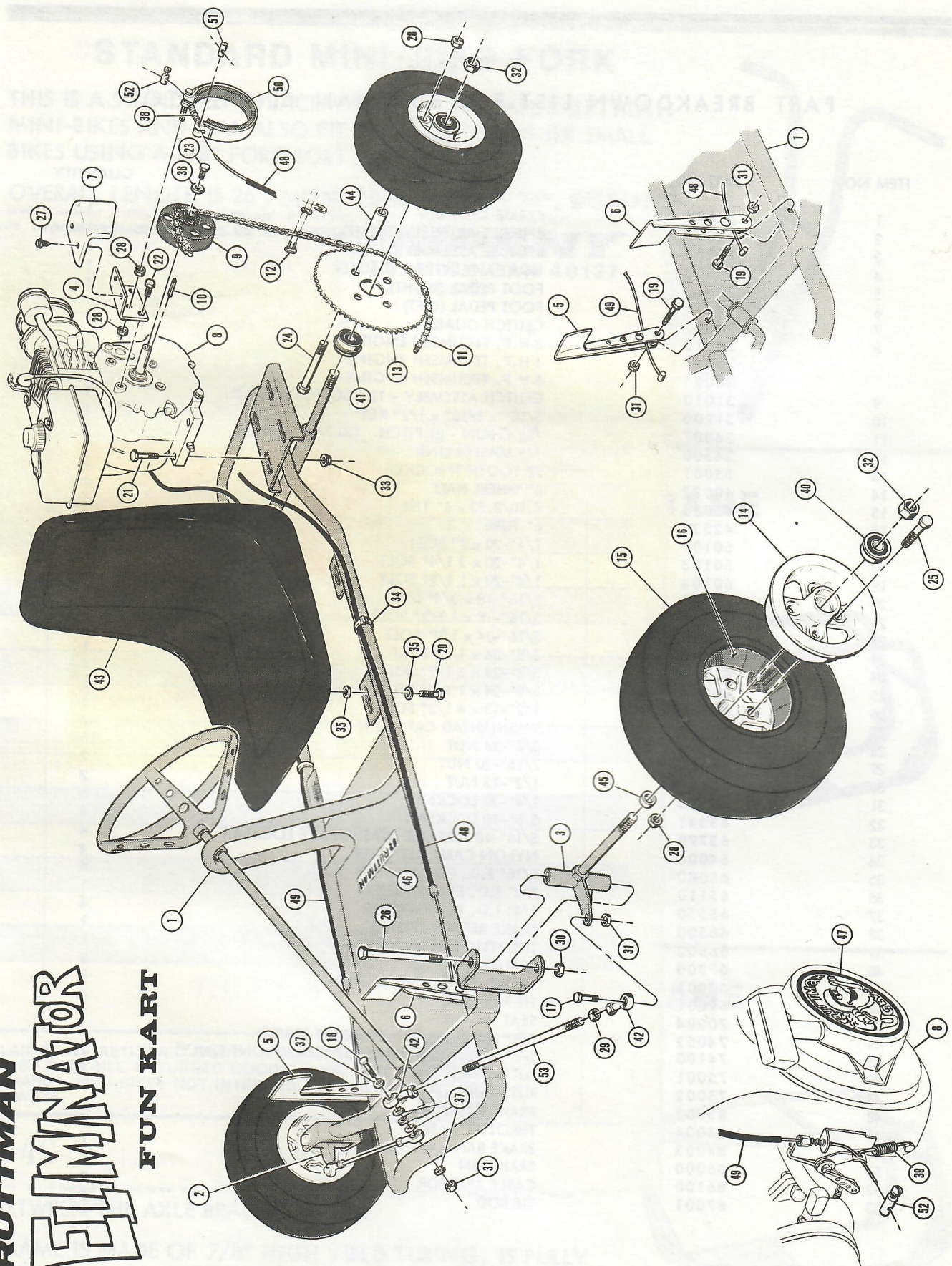


## PART BREAKDOWN LIST FOR RUTTMAN GRASSHOPPER

ITEM NO.	PART NO.	DESCRIPTION	QUANTITY
1	16000	CLUTCH RETAINER	1
2	22103	FRAME ASSEMBLY	1
3	24200	CHROME FORK STRUT	2
4	24304	BRAKE MOUNTING BRACKET	1
5	24306	FOOT PEG	2
6	27001	CHROME FORK	1
7	27002	CHROME SEAT FRAME/SISSY BAR ASSEMBLY	1
8	27100	CHROME CHAIN GUARD	1
9	30021	4 H.P. TECUMSEH ENGINE (WITHOUT GAS TANK)	1
10	31010	CLUTCH ASSEMBLY - 12 TOOTH, 3/4" I.D.	1
11	31900	3/16" x 3/16" x 1/2" KEY	1
12	34004	#35 CHAIN - 139 PITCH (52 1/2" LONG)	1
13	34500	#35 MASTER LINK	1
14	35010	72 TOOTH SPROCKET	1
15	40020	6" WHEEL HALF	3
16	40021	6" WHEEL HALF - SPROCKET SIDE	1
17	42060	4.10/3.50 x 6" TIRE	1
18	42061	4.00 x 6" KNOBBY TIRE	1
19	42520	6" TUBE	2
20	60100	1/4"-20 x 1/2" BOLT	6
21	60101	1/4"-20 x 1" BOLT	4
22	60102	1/4"-20 x 1 1/4" BOLT	2
23	60160	5/16"-18 x 3/4" BOLT	6
24	60162	5/16"-18 x 1 1/2" BOLT	16
25	60180	5/16"-24 x 1/2" BOLT	2
26	60280	3/8"-24 x 1/2" BOLT	1
27	60740	5/8"-18 x 7" BOLT	2
28	60742	5/8"-18 x 8" BOLT	1
29	61900	WASHERHEAD CAPSCREW	2
30	63023	5/16"-18 NUT	10
31	63029	3/8"-24 NUT	2
32	63220	1/4"-20 LOCKNUT	2
33	63240	5/16"-18 LOCKNUT	2
34	63341	5/8"-18 LOCKNUT	3
35	63540	5/16"-18 ACORN NUT	6
36	63556	3/8"-16 ACORN NUT	2
37	63790	5/16"-18 SERRATED WASHERFACE LOCKNUT	4
38	64000	NYLON CABLE RETAINER	4
39	64004	GAS TANK STRAP	2
40	65080	5/16" I.D. FLAT WASHER	8
41	65110	3/8" I.D. FLAT WASHER	8
42	66500	BRAKE RETURN SPRING	1
43	67000	SEALED BEARING	4
44	70003	CUSTOM SEAT	1
45	70500	SHOCK ABSORBER	2
46	71000	CHROME GAS TANK	1
47	72400	FUEL LINE FITTING	1
48	74106	5/8" I.D. x 1 3/8" SPACER	2
49	74108	5/8" I.D. x 1 15/16" SPACER	2
50	75000	CHAIN GUARD DECAL	1
51	77000	CHROME PLUG	2
52	80001	TWIST GRIP THROTTLE ASSEMBLY	1
53	80002	DUMMY HANDLE GRIP	1
54	81000	THROTTLE CABLE	1
55	82000	BRAKE LEVER	1
56	83000	BRAKE CABLE	1
57	84001	BRAKE BAND ASSEMBLY	1
58	86000	BRAKE PIN	1
59	86100	CABLE ANCHOR	2



# **RUTTMAN** **ELIMINATOR** **FUN KART**







# RUTTMAN

# Mini-Bikes

Phone: 313 - 278-5093

24732 Ford Road

Dearborn Hts., Michigan 48127

## PART BREAKDOWN LIST FOR RUTTMAN ELIMINATOR

ITEM NO.	PART NO.	DESCRIPTION	QUANTITY
1	22104	FRAME ASSEMBLY	1
2	22202	SPINDLE ASSEMBLY (RIGHT)	1
3	22203	SPINDLE ASSEMBLY (LEFT)	1
4	24303	BRAKE MOUNTING BRACKET	1
5	24310	FOOT PEDAL (RIGHT)	1
6	24311	FOOT PEDAL (LEFT)	1
7	24312	CLUTCH GUARD	1
8	30010	3 H.P. TECUMSEH ENGINE	1
	30020	4 H.P. TECUMSEH ENGINE	1
	30025	5 H.P. TECUMSEH ENGINE	1
9	31010	CLUTCH ASSEMBLY - 12 TOOTH, 3/4" I.D.	1
10	31900	3/16" x 3/16" x 1/2" KEY	1
11	34007	#35 CHAIN - 81 PITCH (30 3/4" LONG)	1
12	34500	#35 MASTER LINK	1
13	35001	72 TOOTH SPROCKET	1
14	40022	6" WHEEL HALF	8
15	42060	4.10/3.50 x 6" TIRE	4
16	42520	6" TUBE	4
17	60101	1/4"-20 x 1" BOLT	2
18	60103	1/4"-20 x 2 1/4" BOLT	1
19	60104	1/4"-20 x 1 1/2" BOLT	2
20	60160	5/16"-18 x 3/4" BOLT	4
21	60162	5/16"-18 x 1 1/2" BOLT	4
22	60180	5/16"-24 x 1/2" BOLT	2
23	60280	3/8"-24 x 1/2" BOLT	1
24	60283	3/8"-24 x 3 1/2" BOLT	4
25	60284	3/8"-24 x 1 1/4" BOLT	12
26	60440	1/2"-13 x 4 1/2" BOLT	2
27	61900	WASHERHEAD CAPSCREW	2
28	63029	3/8"-24 NUT	16
29	63034	7/16"-20 NUT	2
30	63037	1/2"-13 NUT	2
31	63220	1/4"-20 LOCKNUT	5
32	63341	5/8"-18 LOCKNUT	4
33	63790	5/16"-18 SERRATED WASHERFACE LOCKNUT	4
34	64000	NYLON CABLE RETAINER	4
35	65080	5/16" I.D. FLAT WASHER	8
36	65110	3/8" I.D. FLAT WASHER	1
37	65550	1/4" I.D. LOCKWASHER	4
38	66500	BRAKE RETURN SPRING	1
39	66502	THROTTLE RETURN SPRING	1
40	67000	SEALED BEARING	8
41	67001	SEALED SNAP RING BEARING	1
42	69001	TIE ROD END	4
43	70004	SEAT	1
44	74052	3/8" I.D. x 2 3/32" SPROCKET SPACER	4
45	74100	5/8" I.D. x 3/16" WHEEL SPACER (FRONT ONLY)	2
46	75001	RUTTMAN DECAL	1
47	75002	RUTTMAN UGLYS DECAL	1
48	83003	BRAKE CABLE	1
49	83004	THROTTLE CABLE	1
50	84003	BRAKE BAND ASSEMBLY	1
51	86000	BRAKE PIN	1
52	86100	CABLE ANCHOR	2
53	87001	TIE ROD	2





# RUTTMAN

Phone: 313 - 278-5093

24732 Ford Road

## Mini-Bikes

Dearborn Hts., Michigan 48127

### STANDARD MINI-BIKE FORK

THIS IS A STANDARD REPLACEMENT FORK FOR ALL RUTTMAN MINI-BIKES AND WILL ALSO FIT SOME OF THE OTHER SMALL BIKES USING A 5/8" FORK BOLT.

OVERALL LENGTH IS 26", HANDLEBAR WIDTH IS 24", DISTANCE BETWEEN FORK PLATES IS 5 7/8" AND DISTANCE BETWEEN THE LOWER ENDS OF THE FORK TUBES IS 5 7/8".

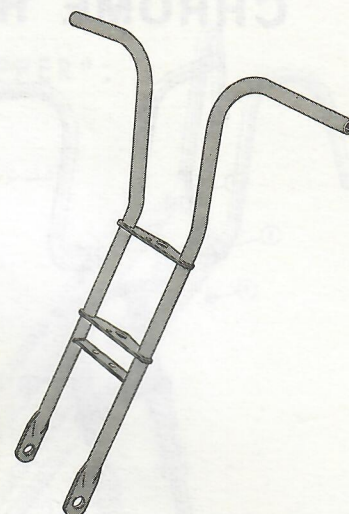
THIS FORK IS MADE OF 7/8" HIGH YIELD TUBING AND IS FULLY WELDED.

READY TO PAINT - FOR 4" WHEEL

Part no. 22000

READY TO PAINT - FOR 5" & 6" WHEELS

Part no. 22001



### STANDARD MINI-BIKE FRAME

THIS IS A STANDARD REPLACEMENT FRAME FOR ALL RUTTMAN MINI-BIKES AND WILL ALSO FIT THE COMPONENT PARTS OF OTHER SMALL MINI-BIKES.

OVERALL LENGTH IS 29", HEIGHT IS 15", WIDTH IS 8", FORK NECK IS 5 7/8" LONG AND THE DISTANCE BETWEEN THE AXLE BRACKETS IS 6".

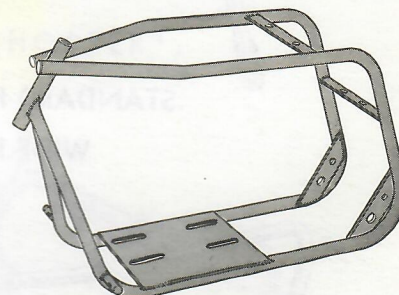
THIS FRAME IS MADE OF 7/8" HIGH YIELD TUBING, IS FULLY WELDED AND HAS BRACKETS FOR FOOT PEGS (USES FOOT PEG NO. 24306).

READY TO PAINT - FOR 4" WHEEL

Part no. 22100

READY TO PAINT - FOR 5" & 6" WHEELS

Part no. 22101



### RUTTMAN PAK MULE FRAME

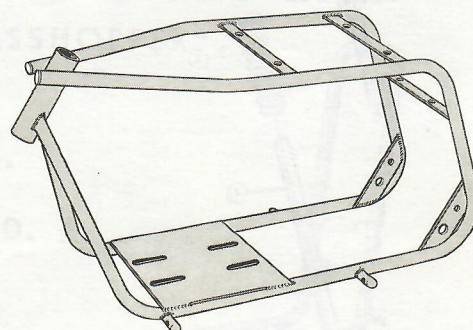
LARGE HEAVY DUTY TRAIL BIKE FRAME FOR RUGGED USE. IT WILL ACCOMODATE TWO PASSENGERS AND CAN BE USED WITH A JACKSHAFT OR TRANSMISSION.

OVERALL LENGTH IS 34", HEIGHT IS 15", WIDTH IS 10", FORK NECK IS 5 7/8" LONG AND THE DISTANCE BETWEEN THE AXLE BRACKETS IS 8".

FRAME IS MADE OF 7/8" HIGH YIELD TUBING, IS FULLY WELDED AND HAS BRACKETS FOR FRONT AND REAR FOLD-UP FOOTRESTS (USES FOOT PEG NO. 24306).

READY TO PAINT FRAME

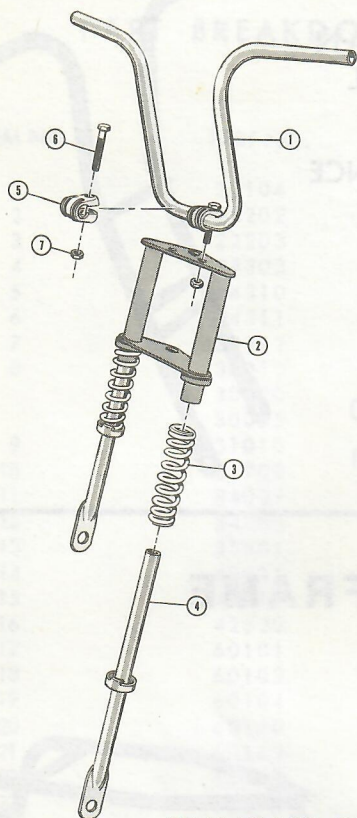
Part no. 22102







## CHROME HANDLEBAR SUSPENSION FORK



THIS HEAVY DUTY SUSPENSION FORK COMES IN TWO SIZES AND FITS OR CAN BE ADAPTED TO MOST OF THE POPULAR MINI-BIKES.

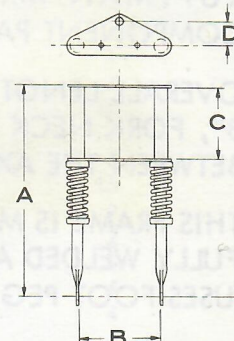
### COMPLETE STANDARD FORK KIT Part no. 97018

Item	Part no.	Description	Qty
1	24100	Standard chrome handlebar	1
2	22002	Standard suspension fork	1
3	66501	Chrome spring	2
4	27200	Fork tube	2
5	24301	Handlebar clamp	2
6	60282	3/8"-24 x 2" Bolt	2
7	63029	3/8"-24 Nut	2

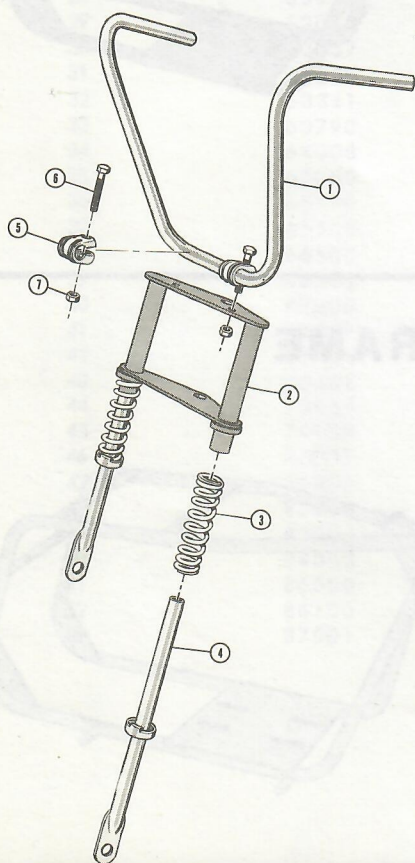
STANDARD FORK

WIDE FORK

Dim. "A"	"B"	"C"	"D"
17 1/2"	5 7/8"	6"	1 1/2"
17 1/2"	8 1/4"	6 1/8"	2 3/8"



THESE CHROME HANDLEBARS WILL FIT OR CAN BE ADAPTED TO MOST SMALL MINI-BIKE FORKS.



UNIVERSAL HANDLEBAR CLAMPS FIT ALL 7/8" DIA. HANDLEBARS.

### COMPLETE WIDE FORK KIT Part no. 97019

Item	Part no.	Description	Qty
1	24101	Wide chrome handlebar	1
2	22003	Wide suspension fork	1
3	66501	Chrome spring	2
4	27200	Fork tube	2
5	24301	Handlebar clamp	2
6	60282	3/8"-24 x 2" Bolt	2
7	63029	3/8"-24 Nut	2





# RUTTMAN

Phone: 313 - 278-5093

24732 Ford Road

# mini-bikes

Dearborn Hts., Michigan 48127

## CHOPPER FORK

STANDARD REPLACEMENT PART FOR RUTTMAN "GRASSHOPPER".

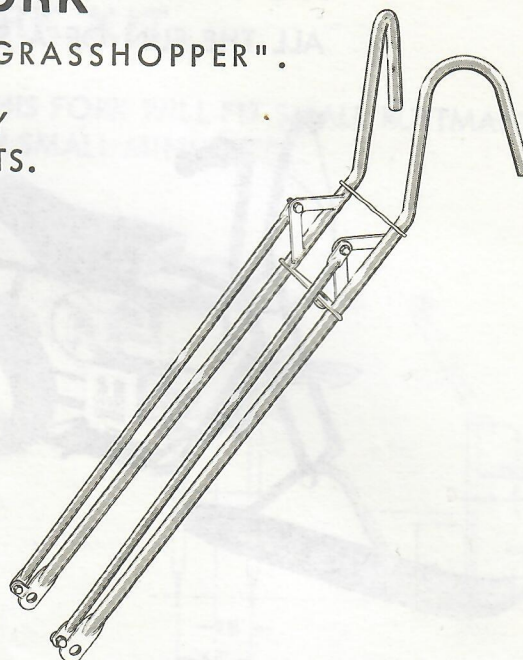
LONG, BIG BIKE, SPRINGER STYLE FORK ASSEMBLY  
WITH HIGH RISER HANDLEBARS AND CHROME STRUTS.

WILL ADAPT TO MOST OF THE  
POPULAR MINI-BIKE WHEELS.

12" HIGH HANDLEBARS

44" OVERALL LENGTH

FORK IS MADE OF 7/8" HIGH YIELD TUBING,  
FULLY WELDED AND READY TO GO.



CHROME FORK

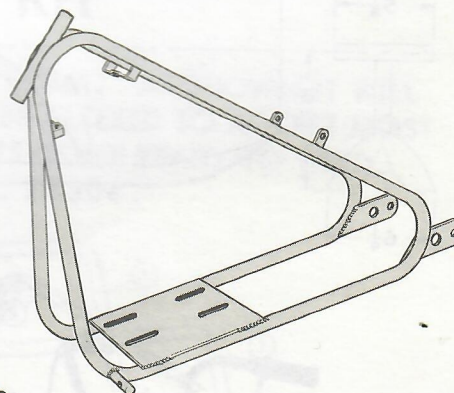
Part no. 27000

## CHOPPER FRAME

STANDARD REPLACEMENT PART FOR RUTTMAN "GRASSHOPPER".

LOW SLUNG FRAME HAS A 5 7/8" LONG FORK  
NECK SET UP FOR A 46 DEGREE RAKE, GAS TANK  
BRACKETS FOR USE WITH CAN TYPE FUELER TANKS,  
SEAT PIVOT BRACKETS AND BRACKETS FOR FOLD-UP  
FOOTRESTS (USES FOOT PEG NO. 24306).

FRAME IS MADE OF 7/8" HIGH YIELD  
TUBING AND IS FULLY WELDED.



READY TO PAINT FRAME ASSEMBLY

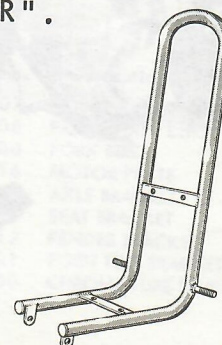
Part no. 22103

## COMBINATION SEAT FRAME AND SISSY BAR

STANDARD REPLACEMENT PART FOR RUTTMAN "GRASSHOPPER".

HIGH RISE SISSY BAR AND SEAT FRAME COMBINATION  
WITH PIVOT BRACKETS AND SHOCK ABSORBER MOUNTS.

MADE OF 7/8" HIGH YIELD TUBING AND FULLY WELDED.



CHROME ASSEMBLY

Part no. 27002





# RUTTMAN

Phone: 313 - 278-5093

24732 Ford Road

# Mini-Bikes

Dearborn Hts., Michigan 48127

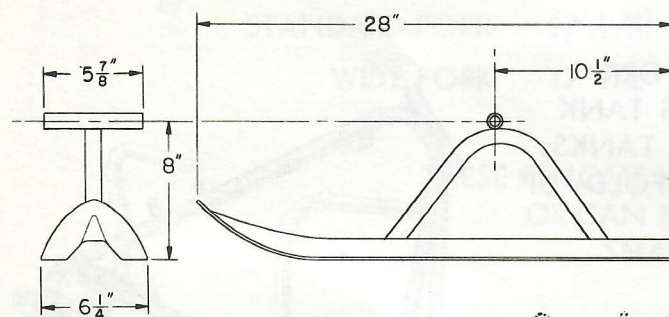
## RUTTMAN SKI-TRAC

ALL THE FUN OF A SNOWMOBILE



CONVERSION KIT FOR MOST POPULAR MINI-BIKES USING 5/8" FRONT AXLES

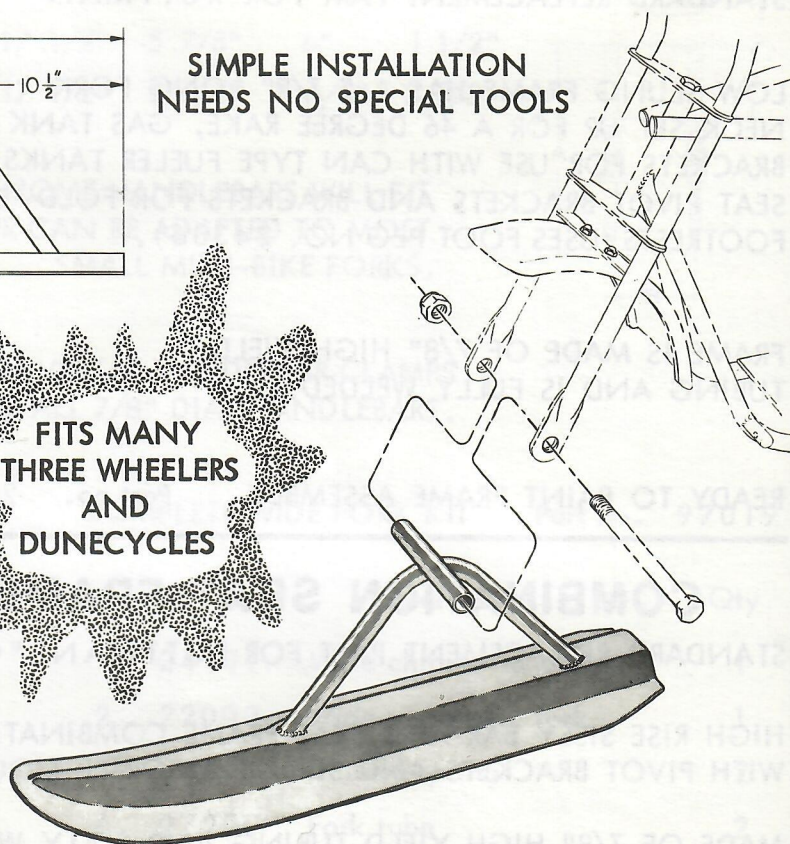
JUST REMOVE THE FRONT WHEEL, BOLT ON THE SKI-TRAC AND GO



SIMPLE INSTALLATION  
NEEDS NO SPECIAL TOOLS



FITS MANY  
THREE WHEELERS  
AND  
DUNECYCLES



READY TO INSTALL SKI

Part no. 27302





# RUTTMAN

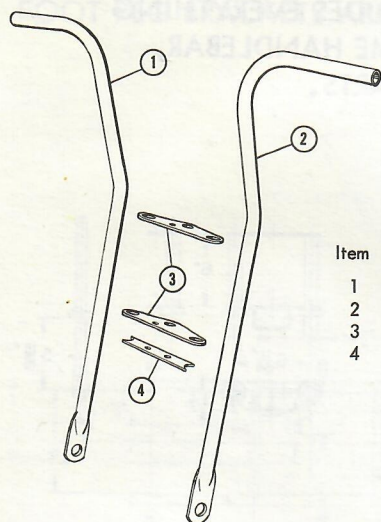
Phone: 313 - 278-5093

24732 Ford Road

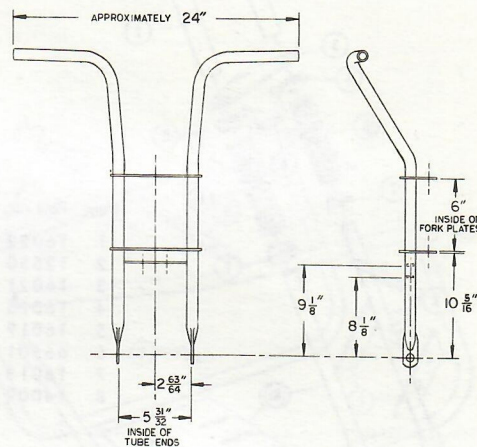
**bikes**  
Dearborn Hts., Michigan 48127

## MINI-BIKE FORK KIT

ALL PARTS ARE READY TO SET UP AND WELD. THIS FORK WILL FIT SMALL RUTTMAN FRAMES AND CAN BE MADE TO FIT MANY OTHER SMALL MINI-BIKES.



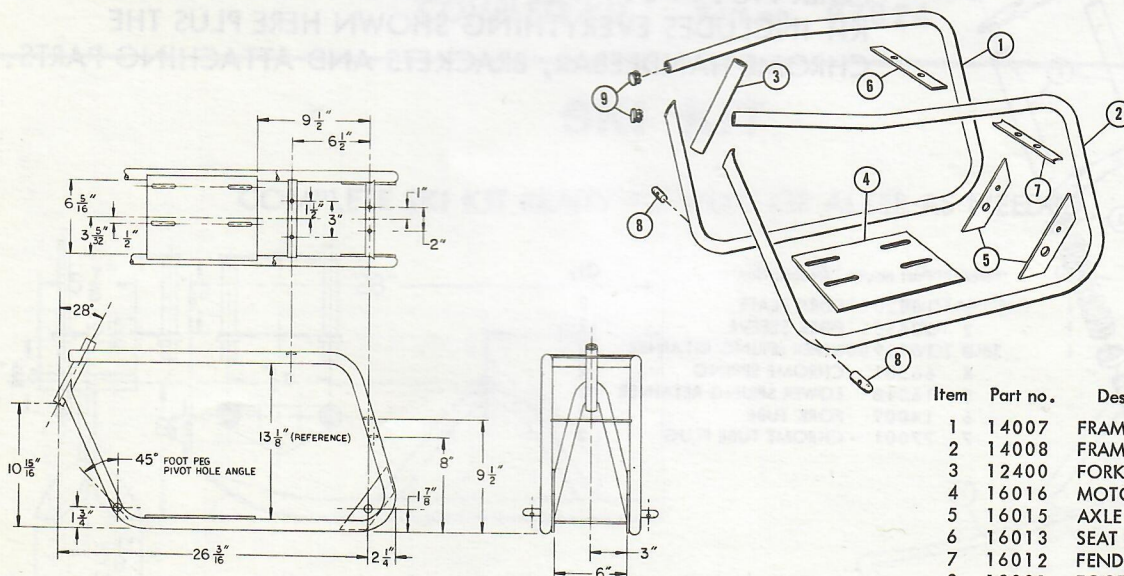
Item	Part no.	Description	Qty
1	14005	FORK HALF R.H.	1
2	14006	FORK HALF L.H.	1
3	16023	FORK PLATE	2
4	16011	FENDER BRACKET	1



COMPLETE KIT Part no. 97022

## MINI-BIKE FRAME KIT

THIS IS THE SMALL RUTTMAN FRAME IN AN UNWELDED FORM. AS SHOWN IT WILL ACCOMODATE SMALL TECUMSEH ENGINES OR IT MAY BE ALTERED TO ACCEPT MOST OTHER SMALL AND SOME LARGER ENGINES. ALL PARTS COME READY TO WELD. FOOT PEG BRACKETS ARE FOR USE WITH FOOT PEG NO. 24306.



Item	Part no.	Description	Qty
1	14007	FRAME HALF R.H.	1
2	14008	FRAME HALF L.H.	1
3	12400	FORK NECK	1
4	16016	MOTOR PLATE	1
5	16015	AXLE BRACKET	2
6	16013	SEAT BRACKET	1
7	16012	FENDER BRACKET	1
8	18001	FOOT PEG BRACKET	2
9	77000	CHROME TUBE PLUG	2

COMPLETE KIT Part no. 97023





# RUTTMAN

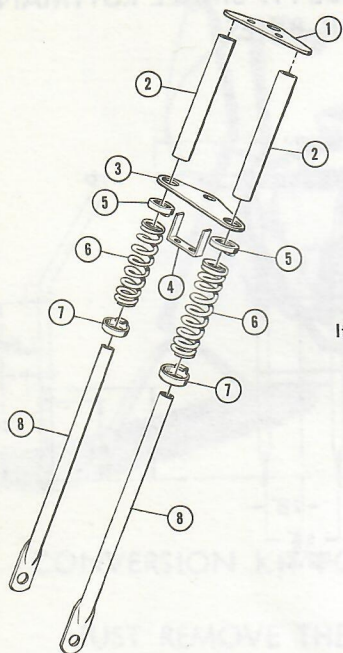
Phone: 313 - 278-5093

24732 Ford Road

Dearborn Hts., Michigan 48127

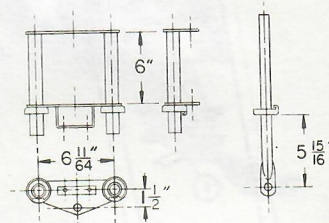
## mini-bikes

### STANDARD SUSPENSION FORK KIT



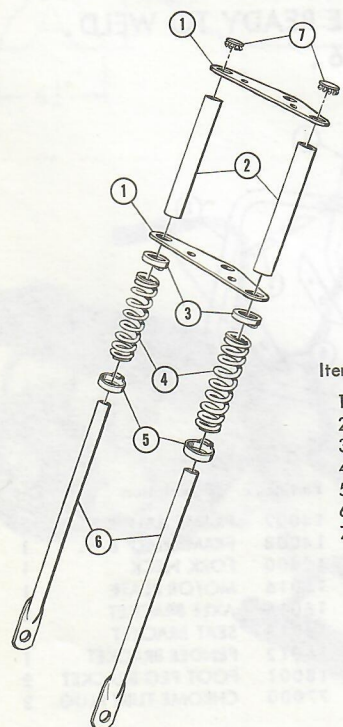
THIS IS THE SAME AS THE STANDARD HEAVY DUTY SUSPENSION FORK NO. 97018 BUT IN WELD IT YOURSELF FORM. KIT INCLUDES EVERYTHING SHOWN HERE PLUS THE CHROME HANDLEBAR, BRACKETS AND ATTACHING PARTS.

Item	Part no.	Description	Qty
1	16022	UPPER FORK PLATE	1
2	12550	FORK SLEEVE	2
3	16021	LOWER FORK PLATE	1
4	16025	FENDER BRACKET	1
5	16019	UPPER SPRING RETAINER	2
6	66501	CHROME SPRING	2
7	16018	LOWER SPRING RETAINER	2
8	14009	FORK TUBE	2



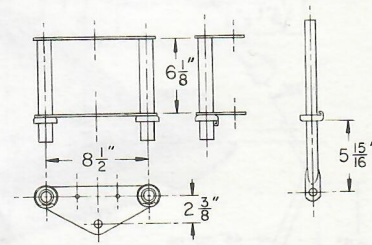
COMPLETE KIT Part no. 97020

### WIDE SUSPENSION FORK KIT



THIS IS THE SAME AS THE WIDE HEAVY DUTY SUSPENSION FORK NO. 97019 BUT IN WELD IT YOURSELF FORM. KIT INCLUDES EVERYTHING SHOWN HERE PLUS THE CHROME HANDLEBAR, BRACKETS AND ATTACHING PARTS.

Item	Part no.	Description	Qty
1	16020	FORK PLATE	2
2	12550	FORK SLEEVE	2
3	16019	UPPER SPRING RETAINER	2
4	66501	CHROME SPRING	2
5	16018	LOWER SPRING RETAINER	2
6	14009	FORK TUBE	2
7	77001	CHROME TUBE PLUG	2



COMPLETE KIT Part no. 97021





# RUTTMAN

Phone: 313 - 278-5093

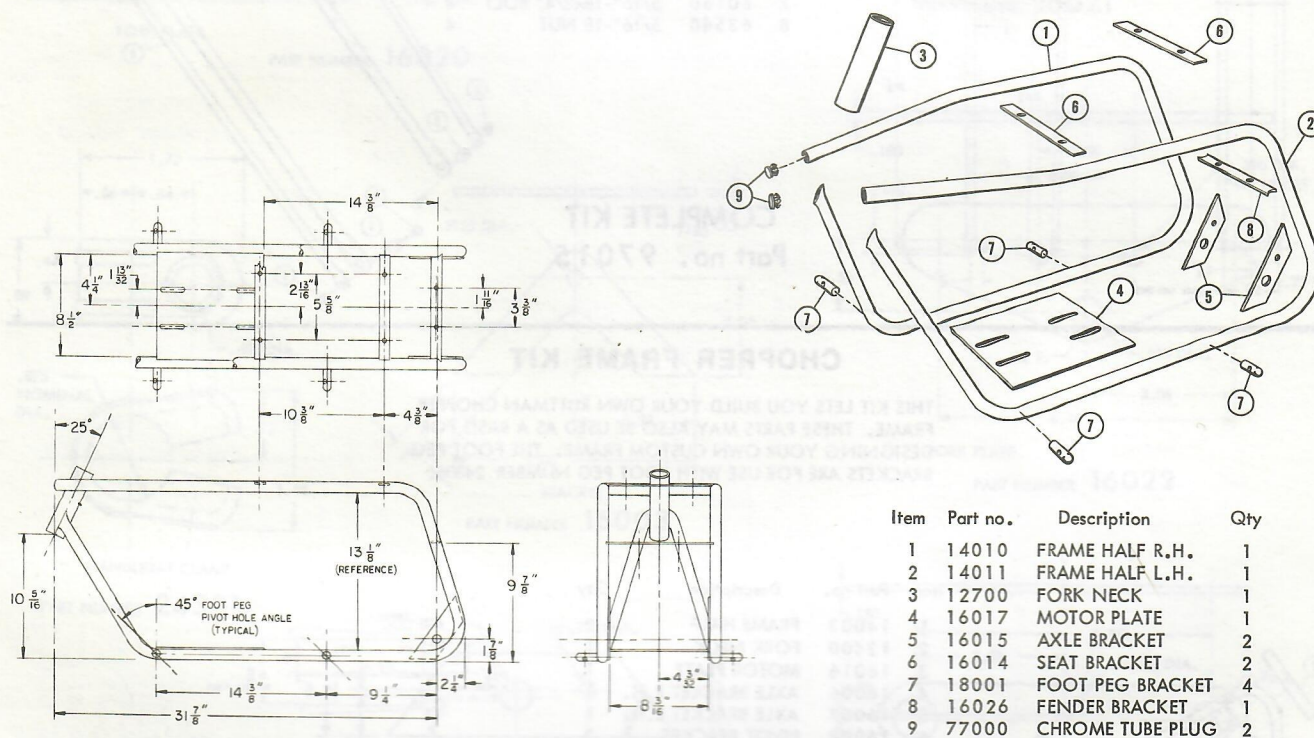
24732 Ford Road

Dearborn Hts., Michigan 48127

## Bikes

### PAK MULE FRAME KIT

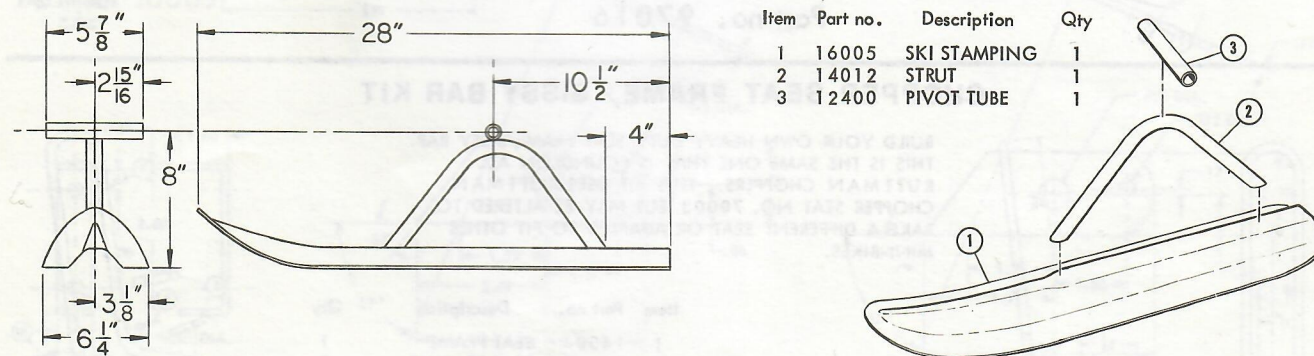
THIS IS THE RUTTMAN PAK MULE FRAME IN AN UNWELDED FORM. AS SHOWN IT WILL ACCOMODATE SMALL TECUMSEH ENGINES OR IT MAY BE ALTERED TO ACCEPT MOST OTHER SMALL AND SOME LARGER ENGINES. ALL PARTS COME READY TO WELD. FOOT PEG BRACKETS ARE FOR USE WITH FOOT PEG NO. 24306.



COMPLETE KIT Part no. 97024

### SKI KIT

COMPLETE SKI KIT READY TO WELD OR ALTER AS NEEDED.



COMPLETE KIT Part no. 97025





# RUTTMAN

# bikes

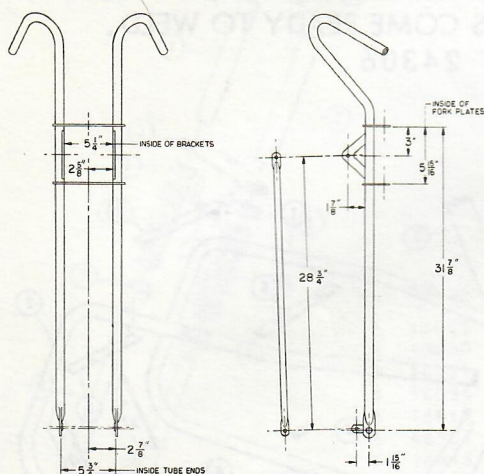
Phone: 313 - 278-5093

24732 Ford Road

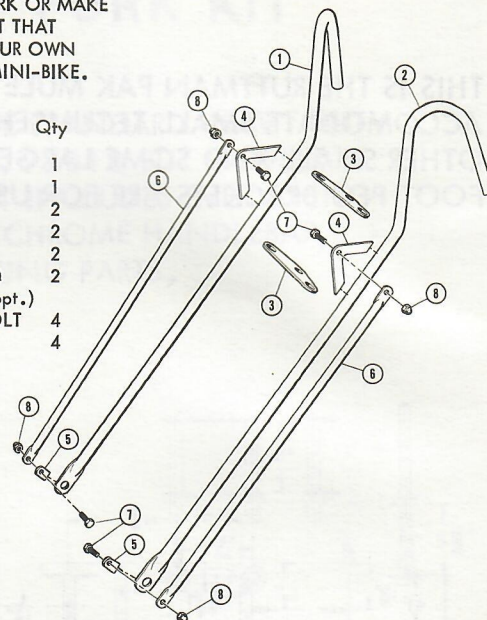
Dearborn Hts., Michigan 48127

## CHOPPER FORK KIT

FOR THOSE WHO WANT TO SCRATCH BUILD A FORK OR MAKE UP THEIR OWN STYLE, HERE IS THE COMPLETE KIT THAT INCLUDES ALL THE BASIC PARTS TO ASSEMBLE YOUR OWN CHOPPER FORK OR CUSTOMIZE IT TO FIT YOUR MINI-BIKE.



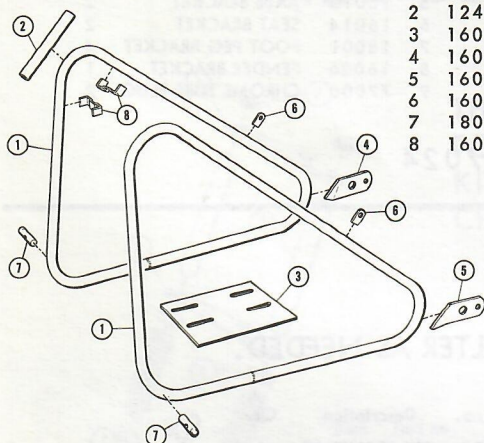
Item	Part no.	Description	Qty
1	14001	HANDLEBAR R.H.	1
2	14002	HANDLEBAR L.H.	1
3	16023	FORK PLATE	2
4	16003	UPPER BRACKET	2
5	16004	LOWER BRACKET	2
6	16001	STRUT (unchromed)	2
	24200	CHROME STRUT (opt.)	
7	60160	5/16\"-18x3/4\" BOLT	4
8	63540	5/16\"-18 NUT	4



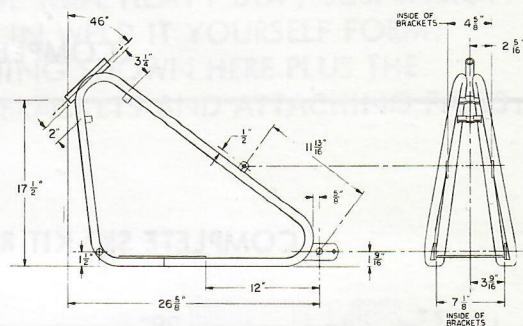
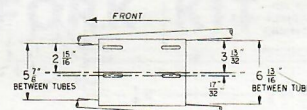
**COMPLETE KIT**  
Part no. 97015

## CHOPPER FRAME KIT

THIS KIT LETS YOU BUILD YOUR OWN RUTTMAN CHOPPER FRAME. THESE PARTS MAY ALSO BE USED AS A BASIS FOR DESIGNING YOUR OWN CUSTOM FRAME. THE FOOT PEG BRACKETS ARE FOR USE WITH FOOT PEG NUMBER 24306.



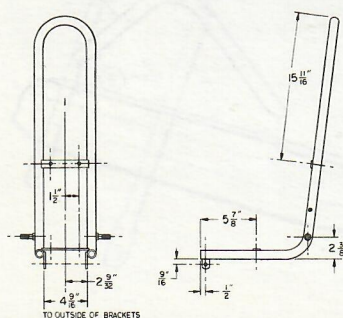
Item	Part no.	Description	Qty
1	14003	FRAME HALF	2
2	12400	FORK NECK	1
3	16016	MOTOR PLATE	1
4	16006	AXLE BRACKET R.H.	1
5	16007	AXLE BRACKET L.H.	1
6	16008	PIVOT BRACKET	2
7	18001	FOOT PEG BRACKET	2
8	16009	GAS TANK BRACKET	2



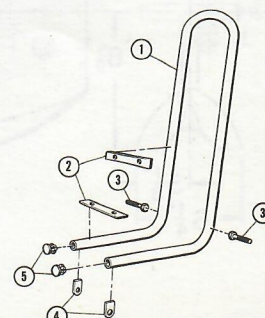
**COMPLETE KIT**  
Part no. 97016

## CHOPPER SEAT FRAME/SISSY BAR KIT

BUILD YOUR OWN HEAVY DUTY SEAT FRAME/SISSY BAR. THIS IS THE SAME ONE THAT IS FOUND ON ALL RUTTMAN CHOPPERS. THIS KIT USES RUTTMAN CHOPPER SEAT NO. 70003 BUT MAY BE ALTERED TO TAKE A DIFFERENT SEAT OR ADAPTED TO FIT OTHER MINI-BIKES.



Item	Part no.	Description	Qty
1	14004	SEAT FRAME	1
2	16010	SEAT BRACKET	2
3	60240	3/8\"-16 BOLT	2
4	16008	PIVOT BRACKET	2
5	77000	CHROME TUBE PLUG	2



**COMPLETE KIT**  
Part no. 97017





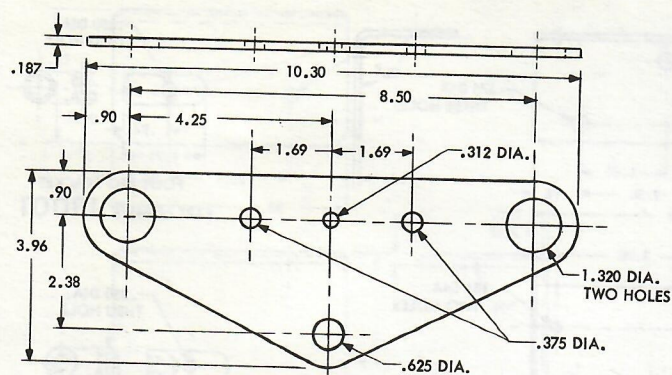
# RUTTMAN

Phone: 313 - 278-5093

24732 Ford Road

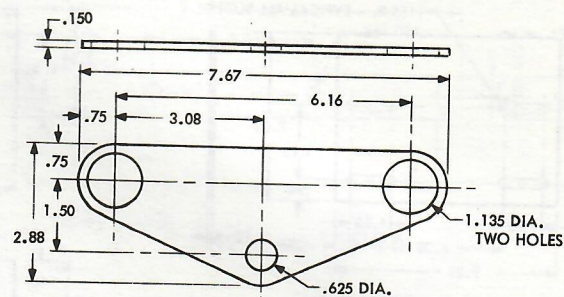
# Bikes

Dearborn Hts., Michigan 48127



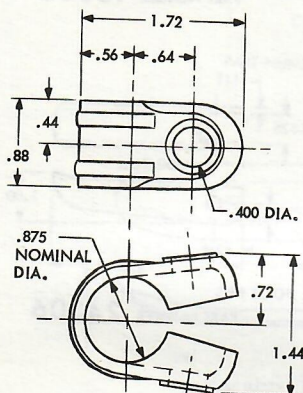
FORK PLATE

PART NUMBER 16020



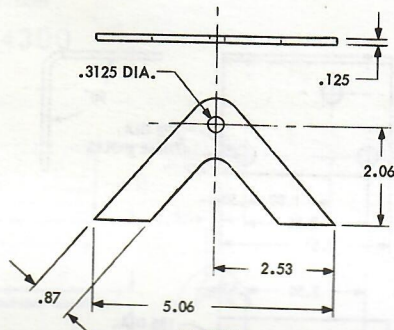
FORK PLATE

PART NUMBER 16021



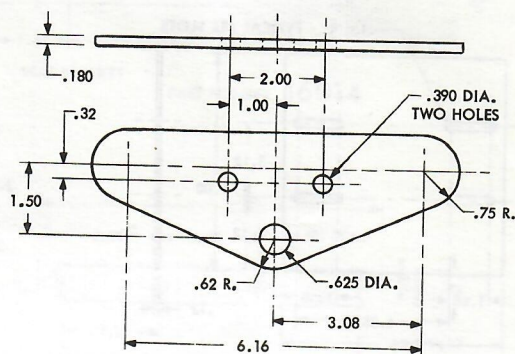
HANDLEBAR CLAMP

PART NUMBER 24301



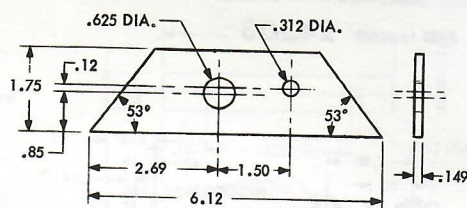
BRACKET

PART NUMBER 16003



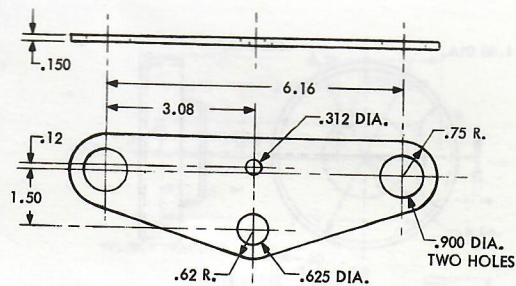
FORK PLATE

PART NUMBER 16022



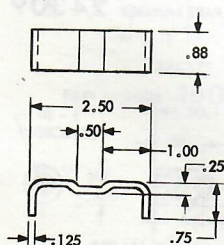
AXLE BRACKET

PART NUMBER 16015



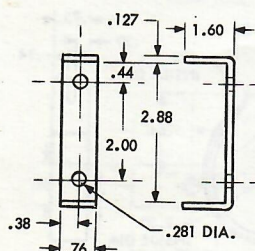
FORK PLATE

PART NUMBER 16023



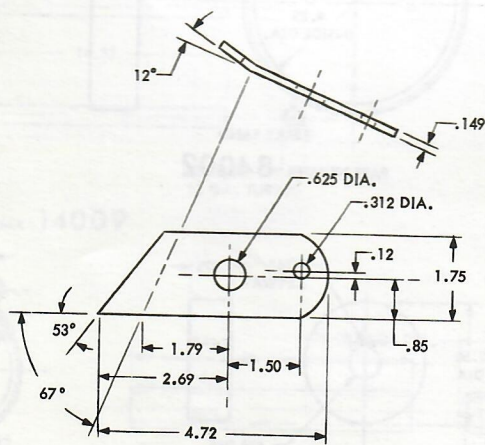
GAS TANK BRACKET

PART NUMBER 16009



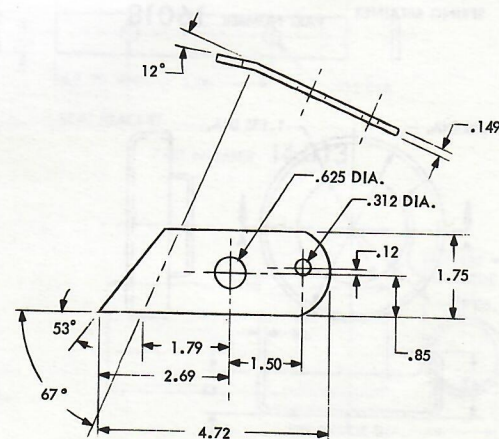
FENDER BRACKET

PART NUMBER 16025



AXLE BRACKET

PART NUMBER 16006



AXLE BRACKET

PART NUMBER 16007





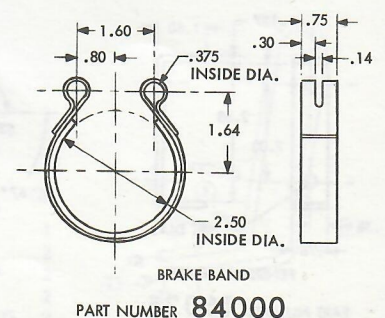
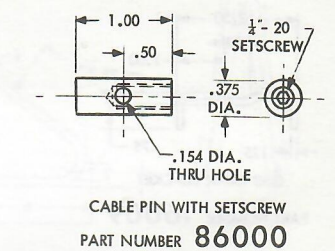
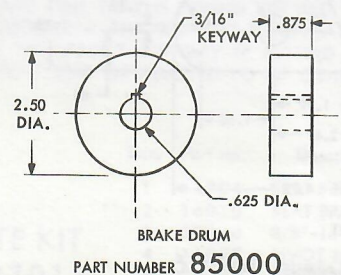
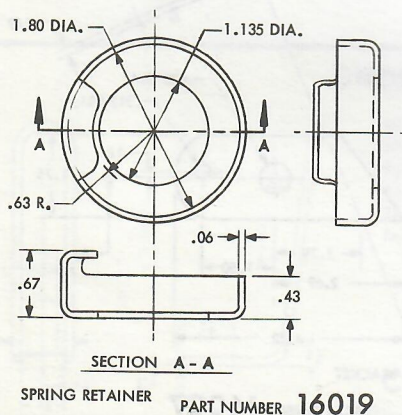
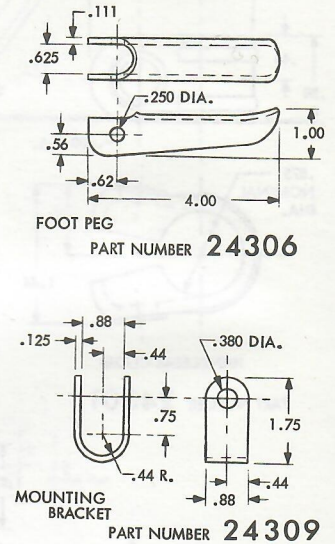
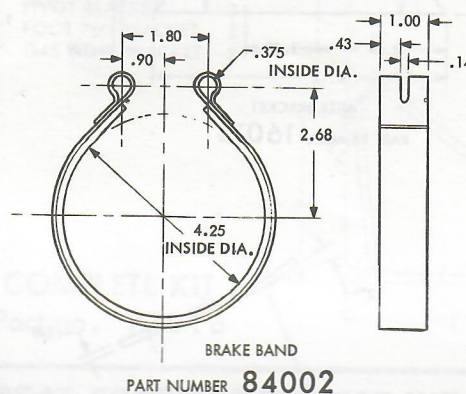
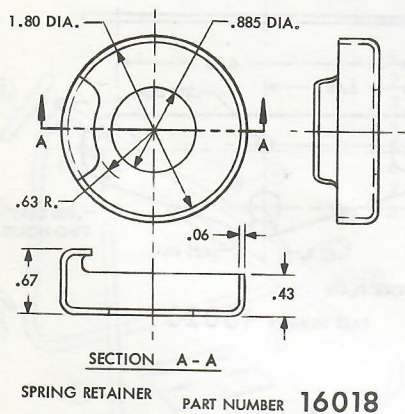
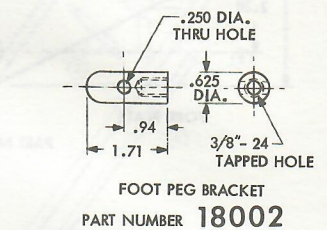
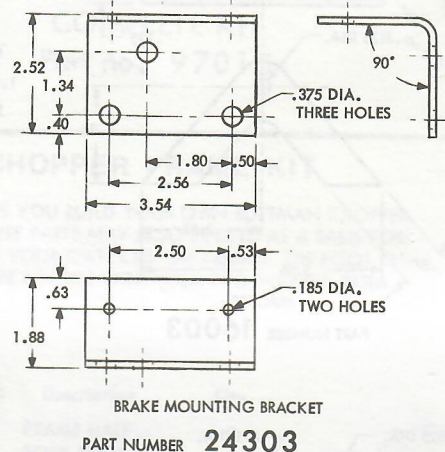
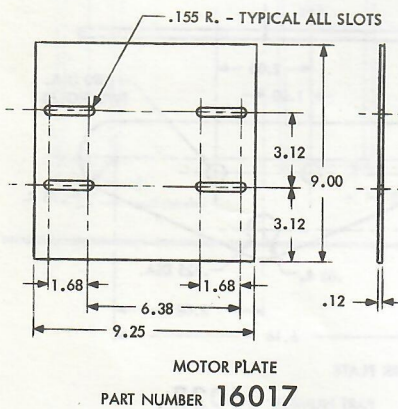
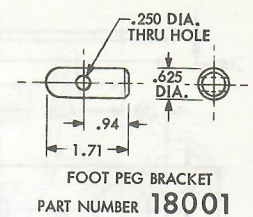
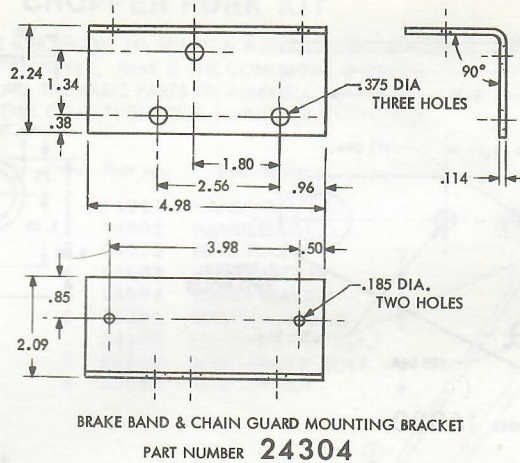
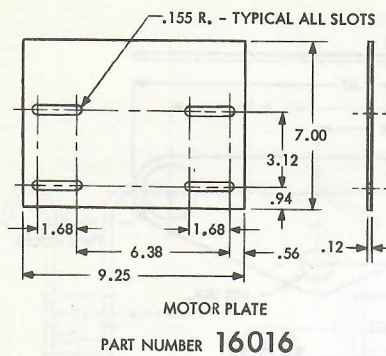
# RUTTMAN

# Mini-Bikes

Phone: 313 - 278-5093

24732 Ford Road

Dearborn Hts., Michigan 48127







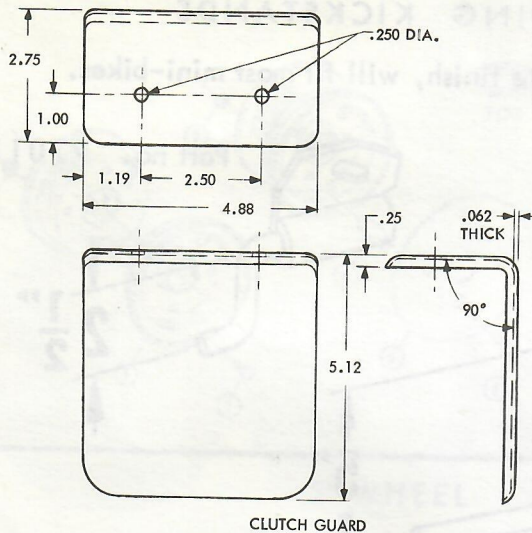
# RUTTMAN

Phone: 313 - 278-5093

24732 Ford Road

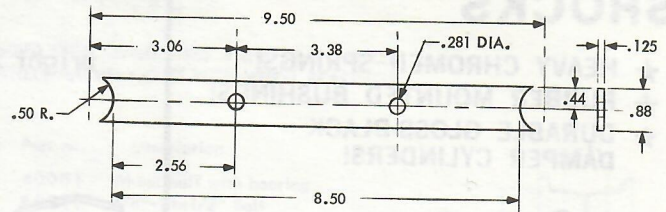
Dearborn Hts., Michigan 48127

## Bikes



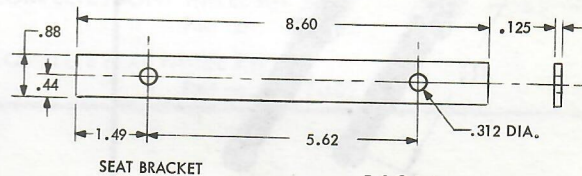
CLUTCH GUARD

PART NUMBER 24300



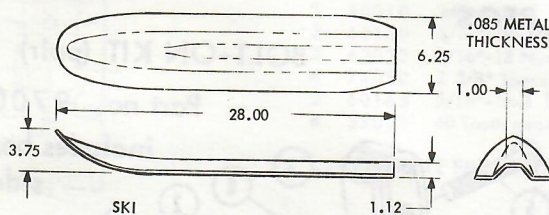
FENDER BRACKET

PART NUMBER 16026



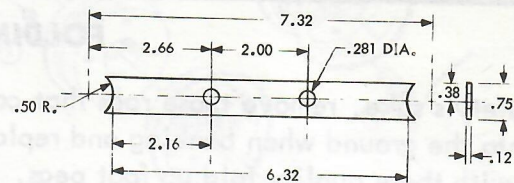
SEAT BRACKET

PART NUMBER 16014



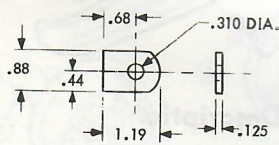
SKI

PART NUMBER 16005



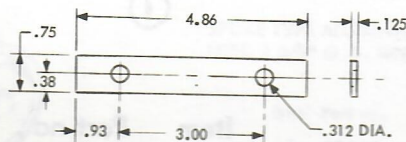
FENDER BRACKET

PART NUMBER 16012



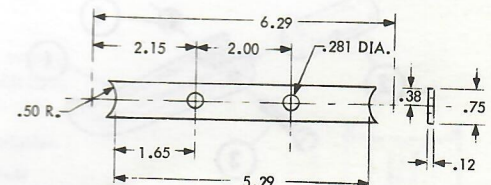
BRACKET

PART NUMBER 16004



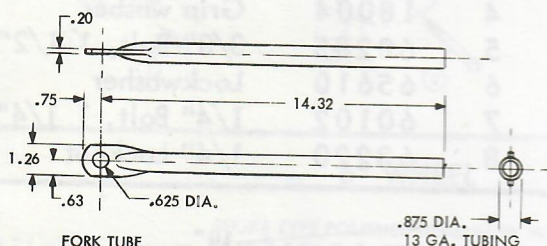
SEAT BRACKET

PART NUMBER 16010



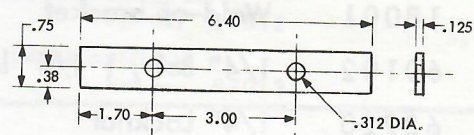
FENDER BRACKET

PART NUMBER 16011



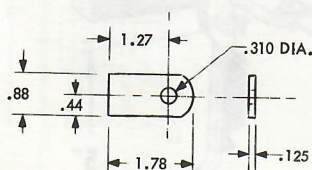
FORK TUBE

PART NUMBER 14009



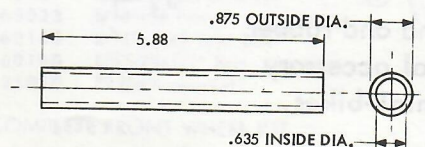
SEAT BRACKET

PART NUMBER 16013



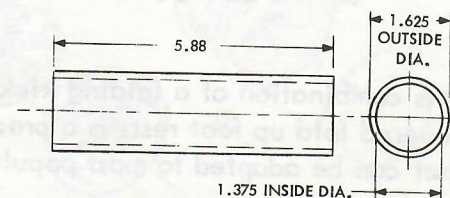
BRACKET

PART NUMBER 16008



FORK NECK TUBE

PART NUMBER 12400



FORK NECK TUBE

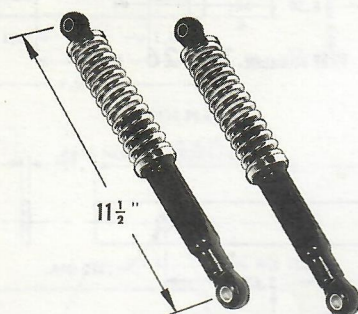
PART NUMBER 12700





## SHOCKS

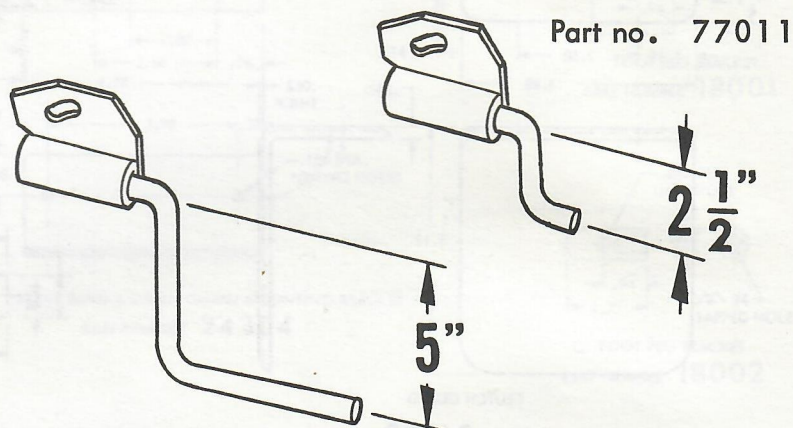
- ★ HEAVY CHROMED SPRINGS!
- ★ RUBBER MOUNTED BUSHINGS!
- ★ DURABLE GLOSS-BLACK DAMPER CYLINDERS!



Part no. 70500

## FOLDING KICKSTANDS

Bright zinc plate finish, will fit most mini-bikes.



Part no. 77012

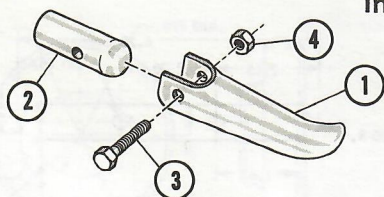
## FOLDING FOOT PEGS

For safety's sake, remove those rods that could dig into the ground when banking and replace them with these quality fold up foot pegs.

### WELD-ON KIT (pair)

Part no. 97001

includes both sides

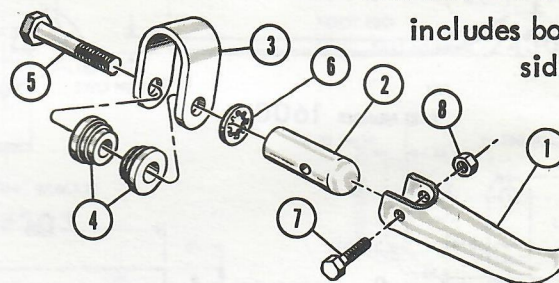


Item	Part no.	Description
1	24306	Foot peg
2	18001	Weld-on bracket
3	60102	1/4" Bolt, 1 1/4" long
4	63220	1/4" Locknut

### BOLT-ON KIT (pair)

Part no. 97002

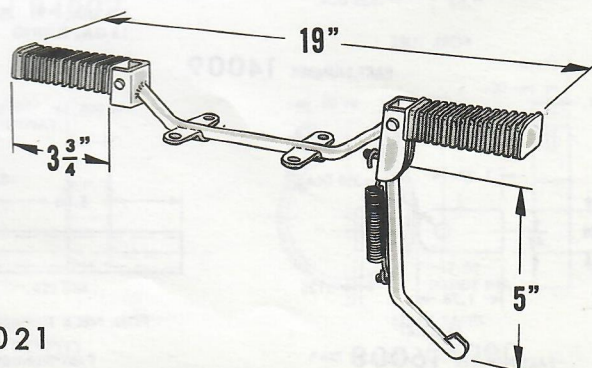
includes both sides



Item	Part no.	Description
1	24306	Foot peg
2	18002	Threaded bracket
3	24309	Mounting bracket
4	18004	Grip washer
5	60285	3/8" Bolt, 1 1/2" long
6	65610	Lockwasher
7	60102	1/4" Bolt, 1 1/4" long
8	63220	1/4" Locknut

## COMBINATION KICKSTAND & FOLD UP FOOT PEGS

This combination of a folding kickstand and rubber covered fold up foot rests is a practical accessory that can be adapted to most popular mini-bikes.



Part no. 77021





# RUTTMAN

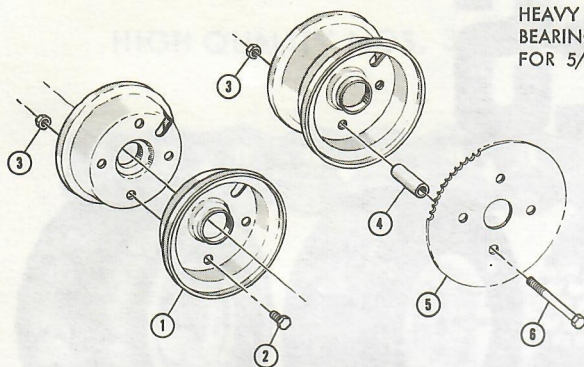
# bikes

Phone: 313 - 278-5093

24732 Ford Road

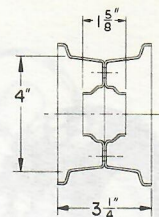
Dearborn Hts., Michigan 48127

## 4" WHEEL



HEAVY DUTY STAMPED STEEL WHEEL USES 1 3/8" O.D. WHEEL BEARINGS. WHEEL HALVES COME WITH WHEEL BEARINGS FOR 5/8" AXLES.

Item	Part no.	Description
1	40001	Wheel half with bearing
2	60280	3/8"-24x1/2" Bolt
3	63029	3/8"-24 Nut
4	74051	2 1/2" Spacer
5	35000	60 Tooth sprocket
6	60283	3/8"-24x3 1/2" Bolt



### COMPLETE FRONT WHEEL KIT

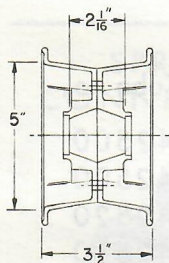
Part no. 97006

### COMPLETE REAR WHEEL KIT

Part no. 97007

## 5" WHEEL

RIBBED, MAG TYPE POLISHED ALUMINUM WHEEL USES 1 3/8" O.D. WHEEL BEARINGS.



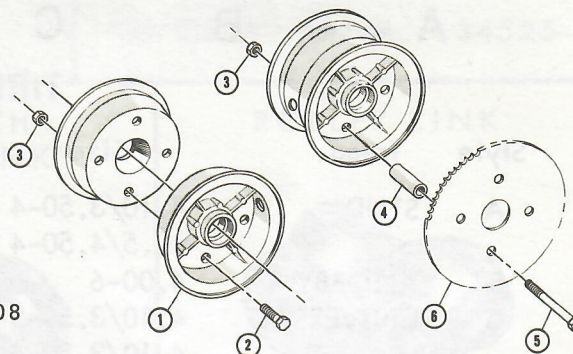
Item	Part no.	Description
1	40010	Wheel half
2	60160	5/16"-18x3/4" Bolt
3	63023	5/16"-18 Nut
4	74050	2 3/8" Spacer
5	60163	5/16"-18x3 1/2" Bolt
6	35000	60 Tooth sprocket

### COMPLETE FRONT WHEEL KIT

Part no. 97008

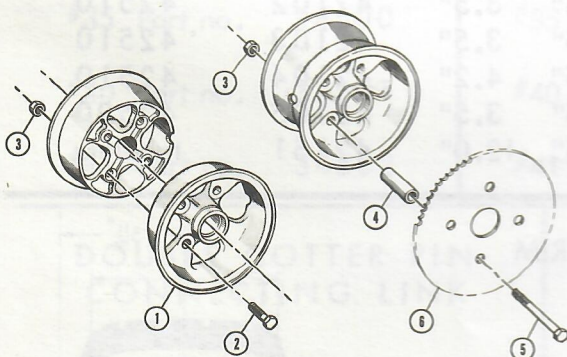
### COMPLETE REAR WHEEL KIT

Part no. 97009



## 6" WHEEL

SPOKE TYPE ALUMINUM MAG WHEEL USES 1 3/8" O.D. WHEEL BEARINGS.



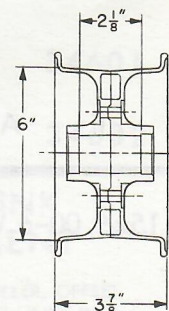
Item	Part no.	Description
1	40022	Wheel half
2	60284	3/8"-24x1 1/4" Bolt
3	63029	3/8"-24 Nut
4	74052	2 3/32" Spacer
5	60283	3/8"-24x3 1/2" Bolt
6	35001	72 Tooth sprocket

### COMPLETE FRONT WHEEL KIT

Part no. 97012

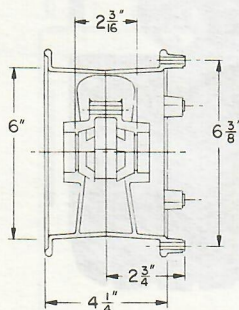
### COMPLETE REAR WHEEL KIT

Part no. 97013



## 6" WHEEL

SPOKE TYPE POLISHED ALUMINUM MAG WHEEL USES 1 3/8" O.D. WHEEL BEARINGS.



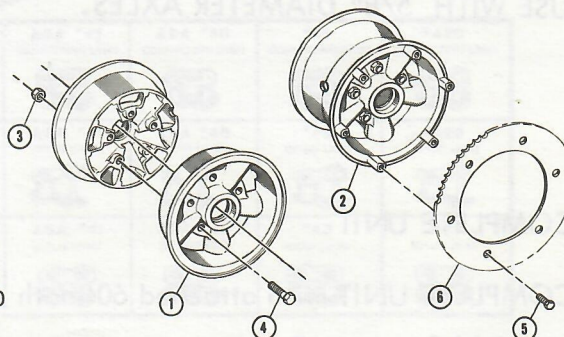
Item	Part no.	Description
1	40020	Wheel half
2	40021	Sprocket half of wheel
3	63023	5/16"-18 Nut
4	60162	5/16"-18x1 1/2" Bolt
5	60100	1/4"-20x1/2" Bolt
6	35010	72 Tooth sprocket

### COMPLETE FRONT WHEEL KIT

Part no. 97010

### COMPLETE REAR WHEEL KIT

Part no. 97011







# RUTTMAN

Phone: 313 - 278-5093

24732 Ford Road

**mini-**  
**bikes**

Dearborn Hts., Michigan 48127

# TIRES

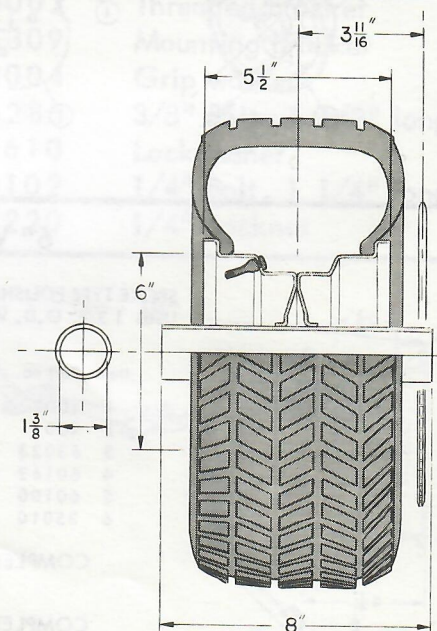


## TIRES & TUBES

Style	Tread	Size	Ply	O.D.	Width	Tire no.	Tube no.
A	STUD	4.10/3.50-4	2	10.4"	3.8"	42000	42500
		10.5/4.50-4	2	10.9"	4.5"	42001	42500
B	KNOBBY	4.00-6	2	14.0"	4.0"	42061	42520
C	UNIVERSAL	4.10/3.50-5	2	11.5"	3.8"	42030	42510
		4.10/3.50-6	2	12.5"	4.1"	42060	42520
D	TURF SAVER	15x6.00-6	2	14.9"	5.9"	42062	42521
E	SLICK	3.40/3.00-5	2	10.5"	2.5"	42101	42510
		3.40/3.00-5	2	10.5"	3.5"	42102	42510
		4.10/3.50-5	2	11.5"	3.5"	42103	42510
		4.10/3.50-5	2	11.5"	4.2"	42104	42510
		4.10/3.50-6	2	12.5"	3.5"	42105	42520
F	A.T.V.	21x12-8	2	20.5"	12.0"	42151	tubeless

15x6.00-6 WIDE, HEAVY DUTY TUBELESS TIRE ON RIM

ASSEMBLY COMES READY TO INSTALL AND INCLUDES  
TIRE, RIM AND 1 3/8" O.D. WHEEL BEARINGS FOR  
USE WITH 5/8" DIAMETER AXLES.



COMPLETE UNIT

Part no. 41001

COMPLETE UNIT with attached 60 tooth sprocket

Part no. 41003





# RUTTMAN

# bikes

Phone: 313 - 278-5093

24732 Ford Road

Dearborn Hts., Michigan 48127

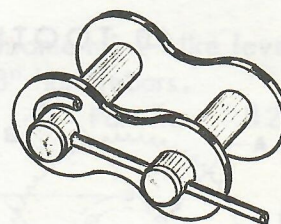
## ROLLER CHAIN

HIGH QUALITY NOS. 35, 40, &amp; 41 CHAIN



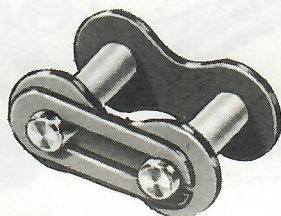
	Pitch	Width	Part no.
#35 Chain	3/8"	3/16"	34000
#40 Chain	1/2"	5/16"	34150
#41 Chain	1/2"	1/4"	34200

## COTTER TYPE CONNECTING LINK

Positive locking link for  
high speed or racing.

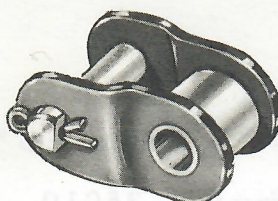
#35 ONLY Part no. 34525

## SPRING CLIP CONNECTING LINK



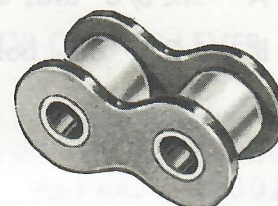
#35 Part no.	34500
#40 Part no.	34501
#41 Part no.	34502

## ONE PITCH OFFSET LINK



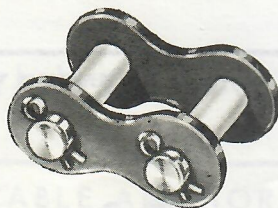
#35 Part no.	34550
#40 Part no.	34551
#41 Part no.	34552

## ROLLER LINK



#35 Part no.	34600
#40 Part no.	34601
#41 Part no.	34602

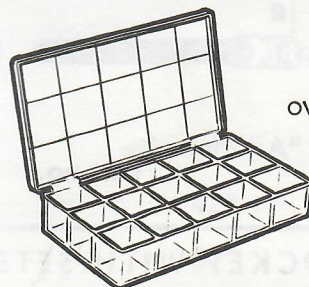
## DOUBLE COTTER PIN CONNECTING LINK



Positive locking racing link.

#35 ONLY Part no. 34526

## CHAIN LINK ASSORTMENT

OVER 300 ASSORTED ROLLER, OFFSET  
AND CONNECTING LINKS IN A  
TRANSPARENT DISPLAY CASE  
WITH AN INDIVIDUAL LABELED  
COMPARTMENT FOR EACH OF  
THE TYPES SHOWN BELOW.

ASA *35 CONNECTING LINKS	ASA *41 CONNECTING LINKS	ASA *40 CONNECTING LINKS	*43 CONNECTING LINKS	*420 CONNECTING LINKS
ASA *35 OFFSET LINKS	ASA *41 OFFSET LINKS	ASA *40 OFFSET LINKS	*43 OFFSET LINKS	*420 OFFSET LINKS
ASA *35 ROLLER LINKS	ASA *41 ROLLER LINKS	ASA *40 ROLLER LINKS	*43 ROLLER LINKS	*420 ROLLER LINKS

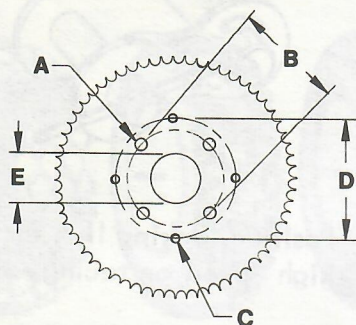
Complete assortment in case Part no. 34650





## SPROCKETS

### 60 TOOTH FLAT SPROCKET FOR NO. 35 CHAIN

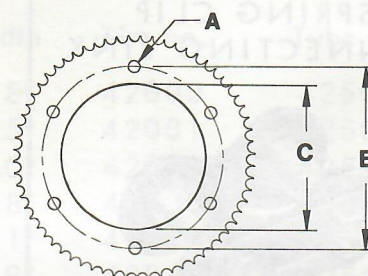


Part no. 35000

- A Four 3/8" dia. bolt holes
- B 2 7/8" dia. bolt circle
- C Four 5/16" dia. bolt holes
- D 3 7/16" dia. bolt circle
- E 1 3/8" dia. bearing hole

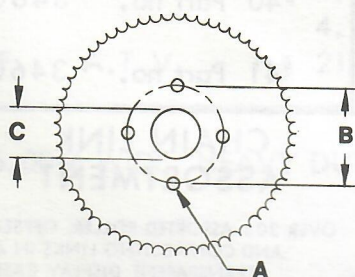
### 72 TOOTH FLAT SPROCKET FOR NO. 35 CHAIN

- A Six 3/8" dia. bolt holes
- B 6 3/8" dia. bolt circle
- C 5" bore



Part no. 35010

### 72 TOOTH FLAT SPROCKET FOR NO. 35 CHAIN

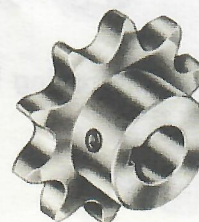


- A Four 3/8" dia. bolt holes
- B 2 7/8" dia. bolt circle
- C 1 3/8" dia. bearing hole

Part no. 35001

### 5/8" BORE SPROCKET WITH SETSCREW AND 3/16" KEYWAY FOR NO. 35 CHAIN

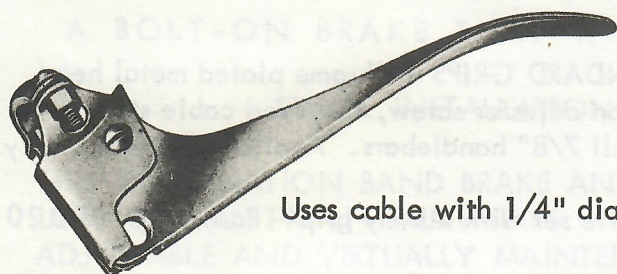
11 TOOTH	Part no. 35401
12 TOOTH	Part no. 35402
14 TOOTH	Part no. 35404
16 TOOTH	Part no. 35406
18 TOOTH	Part no. 35408







## Control Levers

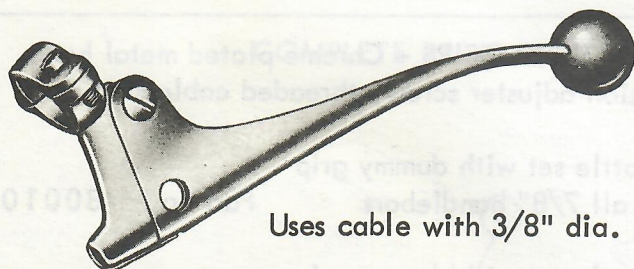


### BRAKE OR CLUTCH LEVER

Standard chrome mini-bike lever.  
Fits all 7/8" handlebars.

Part no. 82000

Uses cable with 1/4" dia. barrel.

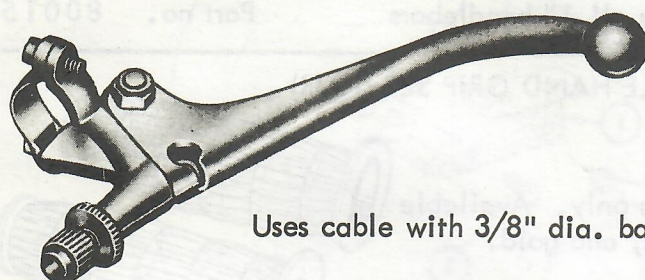


### BRAKE OR CLUTCH LEVER

Deluxe chrome ball end lever.  
Fits all 7/8" handlebars.

Part no. 82001

Uses cable with 3/8" dia. barrel.



### BRAKE OR CLUTCH LEVER

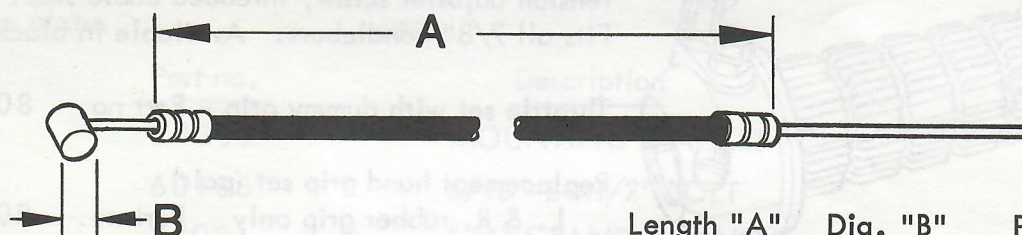
Deluxe chrome ball end lever with cable  
adjuster. Fits all 7/8" handlebars.

Part no. 82002

Uses cable with 3/8" dia. barrel.

## STANDARD BRAKE CABLES WITH BARREL ENDS

Will fit most mini-bike controls.



Order by housing length "A".

Length "A"	Dia. "B"	Part no.
42"	1/4"	83000
60"	1/4"	83001
60"	3/8"	83002

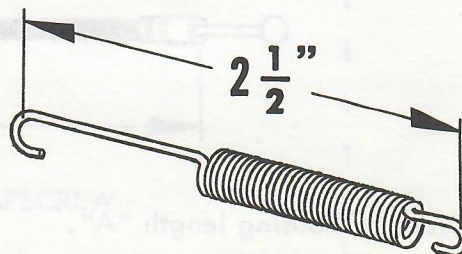
### CABLE ANCHOR

For brake or  
throttle cables.



Part no. 86100

### THROTTLE RETURN SPRING



Part no. 66502





# RUTTMAN

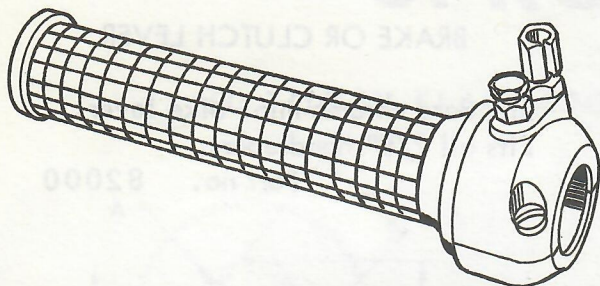
Phone: 313 - 278-5093

24732 Ford Road

Dearborn Hts., Michigan 48127

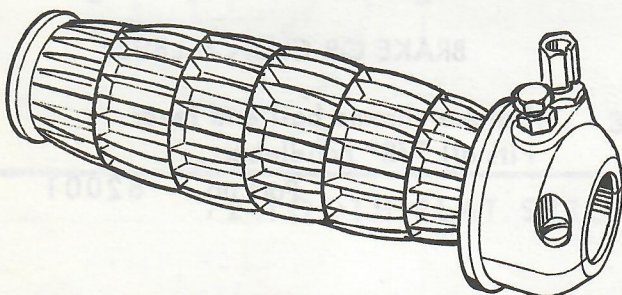
## Mini-Bikes

## Twist Grip Sets



**STANDARD GRIPS** - Chrome plated metal head, tension adjuster screw, threaded cable stop.  
Fits all 7/8" handlebars. Available in black only.

Throttle set with dummy grip - Part no. 80020

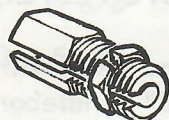


**SCRAMBLER GRIPS** - Chrome plated metal head, tension adjuster screw, threaded cable stop.

Throttle set with dummy grip fits all 7/8" handlebars Part no. 80010

Throttle set with dummy grip fits all 1" handlebars Part no. 80015

### FERRULE ASSEMBLY



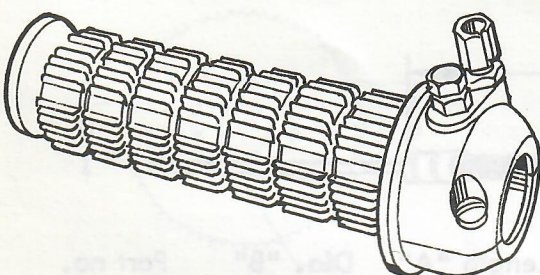
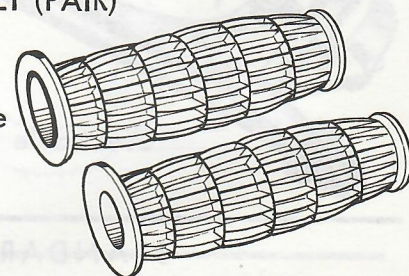
Will fit any of the throttle controls on this page.

Part no. 86200

### SCRAMBLER STYLE HAND GRIP SET (PAIR)

L. & R. rubber grips only. Available in black, red, blue, and gold.  
Specify color.

Part no. 80013



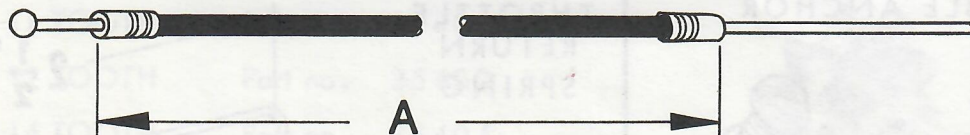
**DELUXE GT TRAIL GRIPS** - Chrome plated metal head, tension adjuster screw, threaded cable stop.  
Fits all 7/8" handlebars. Available in black only.

Throttle set with dummy grip - Part no. 80000

Replacement hand grip set (pair)  
L. & R. rubber grip only Part no. 80003

### STANDARD THROTTLE CABLES WITH 3/16" BALL END

Will fit most mini-bike controls and all of the above.



Order by housing length "A".

42" Length Part no. 81000

60" Length Part no. 81001





## BAND BRAKE KIT

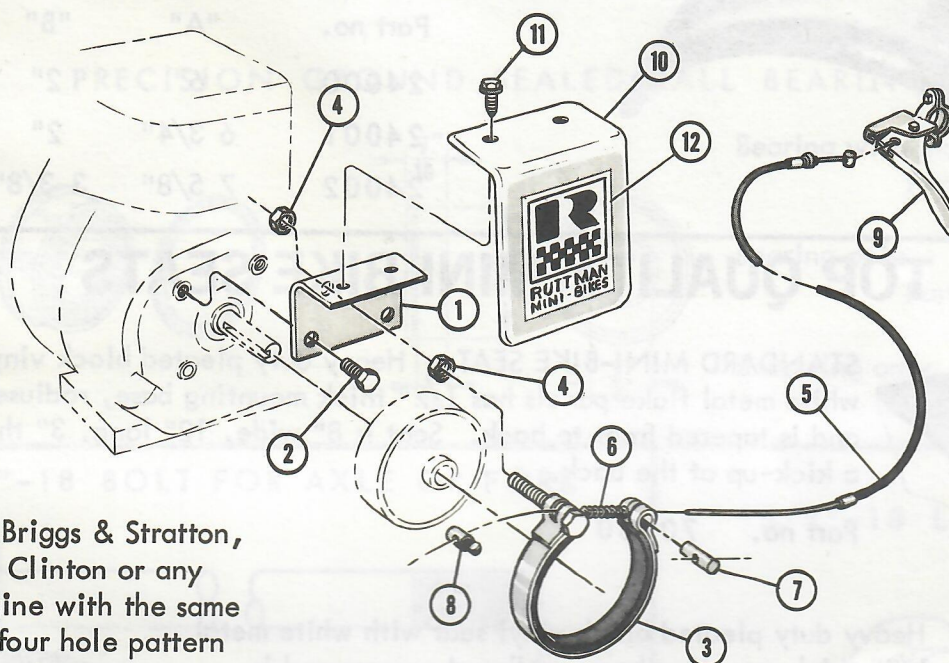
A BOLT-ON BRAKE THAT WILL FIT MANY POPULAR MINI-BIKES

SIMPLE INSTALLATION REQUIRES NO SPECIAL TOOLS

THIS COMBINATION BAND BRAKE AND CLUTCH GUARD IS THE SAME AS THE ONE USED ON RUTTMAN MINI-BIKES. THIS BAND BRAKE IS LONG WEARING, EASILY ADJUSTABLE AND VIRTUALLY MAINTENANCE-FREE.

COMPLETE BAND BRAKE KIT

Part no. 97003



For use on Briggs & Stratton, Tecumseh, Clinton or any similar engine with the same threaded, four hole pattern on the face plate.

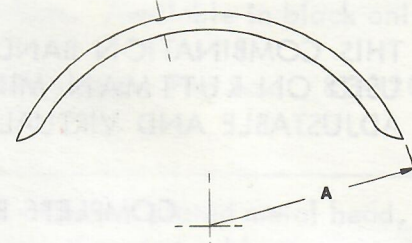
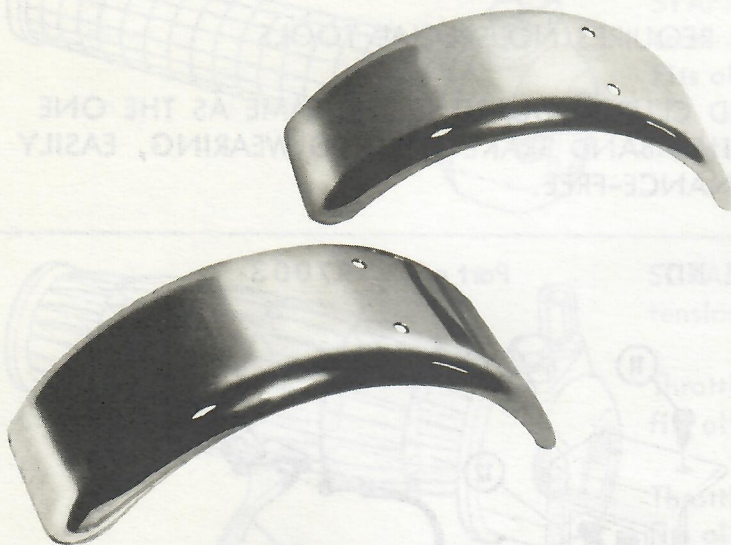
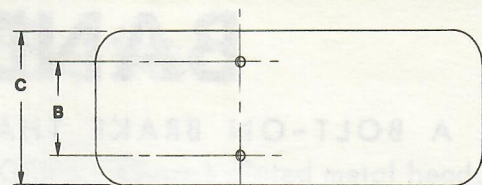
Item	Part no.	Description	Quantity
1	24303	MOUNTING BRACKET	1
2	60180	5/16"-24x1/2" BOLT	2
3	84001	BRAKE BAND ASSEMBLY	1
4	63029	3/8"-24 NUT	2
5	83000	BRAKE CABLE ASSEMBLY	1
6	66500	RETURN SPRING	1
7	86000	BRAKE PIN	1
8	86100	CABLE ANCHOR	1
9	82000	BRAKE LEVER	1
10	24300	CLUTCH GUARD	1
11	61900	WASHER HEAD CAPSCREW	2
12	75000	DECAL	1





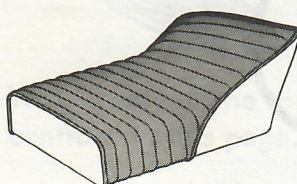
## CHROMED STEEL FENDERS

HIGH QUALITY, CHROME STAMPED STEEL FENDERS.  
WILL FIT MANY POPULAR MINI-BIKES.



Part no.	"A"	"B"	"C"
24000	6"	2"	4 1/8"
24001	6 3/4"	2"	4 1/8"
24002	7 5/8"	3 3/8"	6"

## TOP QUALITY MINI BIKE SEATS

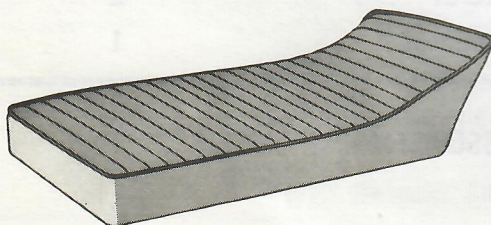
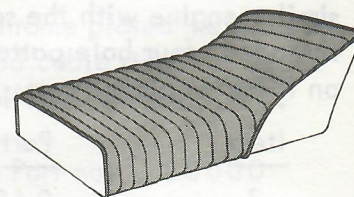


**STANDARD MINI-BIKE SEAT.** Heavy duty pleated black vinyl seat with white metal flake panels has 1/2" thick mounting base, radiused corners and is tapered front to back. Seat is 8" wide, 12" long, 3" thick and has a kick-up at the back.

Part no. 70000

**DELUXE SEAT.** Heavy duty pleated black vinyl seat with white metal flake panels has 1/2" thick mounting base, radiused corners and is tapered front to back. Seat is 8" wide, 16" long and 3" thick with a kick-up at the back.

Part no. 70001



**EXTRA LONG SEAT.** Heavy duty pleated black vinyl seat has 1/2" thick mounting base, radiused corners and is tapered front to back. Seat is 9" wide, 24" long and 3 1/2" thick with a kick-up at the back.

Part no. 70002

**CHOPPER STYLE SEAT.** Deluxe custom seat is made of heavy duty black vinyl and quality rebound foam. Seat has contoured stamped metal mounting base and is 7" wide, 13" long and 19" high with a 2 1/2" thick seat and backrest. This seat is used on all RUTTMAN "GRASSHOPPERS" and may also be adapted to other mini-bikes.

Part no. 70003







# RUTTMAN

Phone: 313 - 278-5093

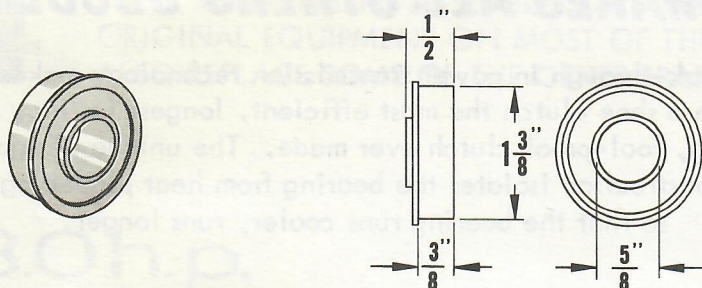
24732 Ford Road

# Mini-bikes

Dearborn Hts., Michigan 48127

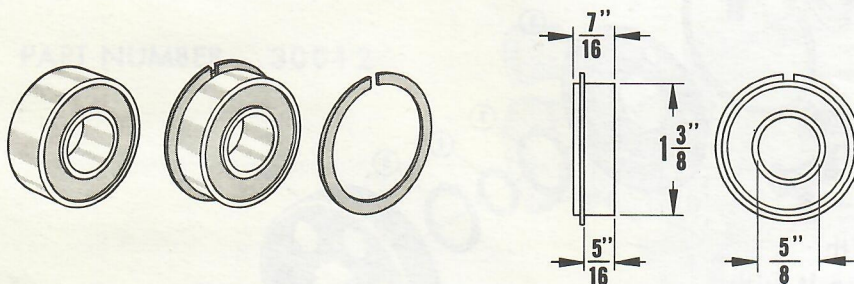
## SEALED BEARINGS

STANDARD SEALED BALL BEARINGS WITH SHOULDER



Part no. 67000

## PRECISION GROUND SEALED BALL BEARINGS



Bearing with snap ring

Part no. 67001

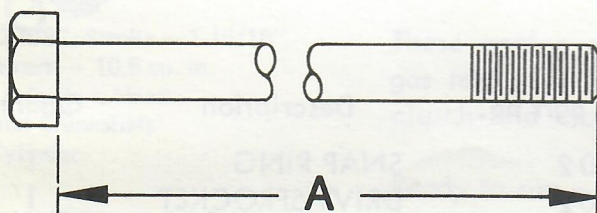
Bearing only

Part no. 67002

Snap ring only

Part no. 64900

## 5/8"-18 BOLT FOR AXLE OR FORK



Length "A"

Part no.

7"

60740

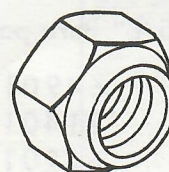
8"

60742

9 1/2"

60741

## 5/8"-18 LOCKNUT



Part no. 63341

## CLUTCH KEYS

3/16" x 3/16" Standard square keys

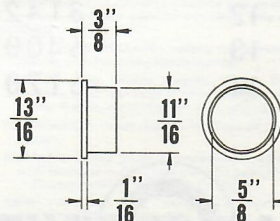


Will fit all 3/16" full keyway shafts on American made mini-bike engines.

Part no. 31900

## FORK NECK BUSHINGS

Replacement brass bushings on some mini-bikes.



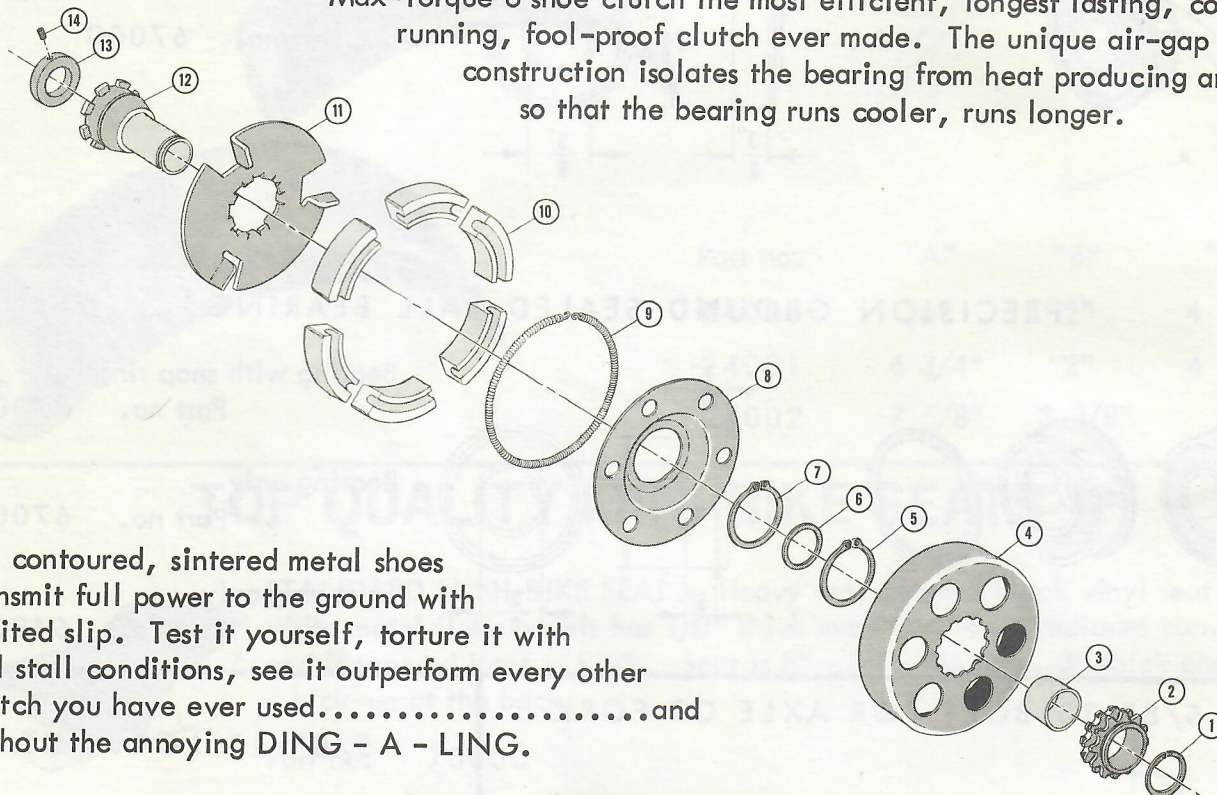
Part no. 68001





## MAX-TORQUE'S NEW 6 SHOE THE CLUTCH THAT MAKES ALL OTHERS OBSOLETE

This amazing break-through in power transmission technology makes the Max-Torque 6 shoe clutch the most efficient, longest lasting, coolest running, fool-proof clutch ever made. The unique air-gap construction isolates the bearing from heat producing areas so that the bearing runs cooler, runs longer.



Six contoured, sintered metal shoes transmit full power to the ground with limited slip. Test it yourself, torture it with full stall conditions, see it outperform every other clutch you have ever used.....and without the annoying DING - A - LING.

Item	5/8" Bore part no.	3/4" Bore part no.	Description	Quantity
1	64901	64902	SNAP RING	1
2	31401	31402	DRIVE SPROCKET	1
3	67201	67202	BEARING	1
4	31101	31102	DRUM	1
5	64905	64906	SNAP RING	1
6	66231	66291	WASHER	1
7	64903	64903	SNAP RING	1
8	31451	31451	RETAINER PLATE	1
9	66503	66503	SPRING	1
10	31301	31301	SHOE	6
11	31201	31201	BACKING PLATE	1
12	31426	31427	HUB ASSEMBLY	1
13	64002	64003	LOCKING COLLAR	1
14	61701	61701	SET SCREW	1



COMPLETE 5/8" BORE CLUTCH ASSEMBLY Part no. 31000

COMPLETE 3/4" BORE CLUTCH ASSEMBLY Part no. 31010





# RUTTMAN

# bikes

Phone: 313 - 278-5093

24732 Ford Road

Dearborn Hts., Michigan 48127



## ENGINE ASSEMBLIES

THESE REPLACEMENT ASSEMBLIES ARE THE SAME ENGINES THAT ARE USED AS ORIGINAL EQUIPMENT ON MOST OF THE POPULAR MINI-BIKES AND CAN ALSO REPLACE SOME OF THE OTHER BRAND ENGINE ASSEMBLIES.

### 3.0h.p.

AT 3600 R.P.M.

Bore — 2-5/16"; Stroke — 1-27/32"

Displacement — 7.75 cu. in.

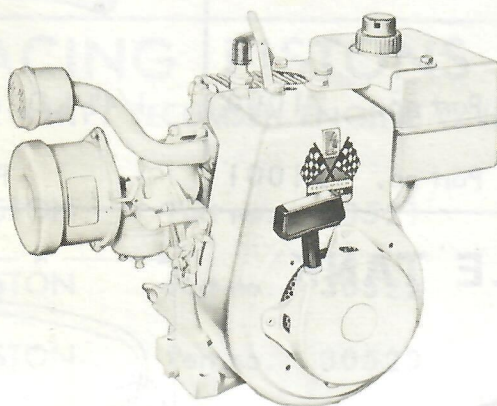
Type — 4 Cycle, L-Head

Horizontal Crankshaft

Single Cylinder

PART NUMBER 30012

DESIGNED FOR  
MINI-BIKE APPLICATIONS



### 4.0h.p.

AT 3600 R.P.M.

Bore — 2-5/8"; Stroke — 1-15/16"

Displacement — 10.5 cu. in.

Type — 4 Cycle L-Head

Horizontal Crankshaft

Single Cylinder

PART NUMBER 30022

These engine assemblies include:  
gas tank, air cleaner, muffler,  
clutch and clutch guard.

Ready to run — just add oil and gas.

### 5.0h.p.

AT 3600 R.P.M.

Bore — 2-13/16"; Stroke — 1-15/16"

Displacement — 12 cu. in.

Type — 4 Cycle, L-Head

Horizontal Crankshaft

Single Cylinder

PART NUMBER 30027

All engines are  
warranted by  
the manufacturer

#### WARRANTY

The Lauson-Power Products Engine Divisions of Tecumseh Products Company (Manufacturer) will, at its option, replace or repair WITHOUT CHARGE to the original purchaser any part or parts manufactured by it and found upon examination by any Manufacturer's Authorized Service Outlet or at the Manufacturer's Factory at Grafton, Wisconsin, to be DEFECTIVE IN MATERIAL AND/OR WORKMANSHIP if received for such examination, (i) in the case of engines for use on chain saws within thirty (30) days, (ii) in the case of engines used on two wheeled riding type vehicles (such as mini-bikes, trail bikes and scooters) within ninety (90) days EXCEPT that engines used to power any vehicles used in competitive racing or on commercial and/or rental tracks are not warranted in any respect; (iii) in all other cases within ONE YEAR, from date of original purchase.

All transportation charges on, and damages and loss incurred in connection with the transportation of, parts submitted for replacement or repair under this Warranty shall be borne by the purchaser.

This warranty shall not apply to any engine or part which shall have been repaired or altered in any way by persons other than Manufacturer's Authorized Service Personnel, nor shall this warranty apply to any damage resulting from accident, alteration, misuse or abuse, nor shall this warranty apply to any damage resulting from failure to follow the Manufacturer's instructions for operation and maintenance of engines and parts.

"The foregoing warranty IS IN LIEU OF ALL OTHER WARRANTIES, EXPRESSED, IMPLIED OR STATUTORY (INCLUDING, BUT NOT LIMITED TO, WARRANTIES OF MERCHANTABILITY AND FITNESS FOR PURPOSE) and of any other obligations and/or liabilities on the part of Manufacturer and Manufacturer neither assumes nor authorizes any other person, natural or corporate, to assume for it any other obligation or liability in connection with or with respect to any engine or parts. The Manufacturer shall in no event be liable for any consequential, incidental or special damages nor for the improper selection of an engine or part for a particular application."

#### SPECIFICATIONS

**COOLING:** Multi-bladed fan on flywheel pulls cool air through rotating screen forcing it over cooling fins on cylinder and head.

**CRANKSHAFT:** Arma steel, with integral counterweights.

**MAIN BEARINGS:** Aluminum alloy.

**ROTATION:** Counterclockwise when viewed from power take-off side.

**CYLINDER AND CRANKCASE:** Aluminum alloy die casting.

**PISTON:** Chrome plated aluminum alloy with one oil control and two compression rings.

**PISTON PIN:** High finish hardened steel.

**CYLINDER HEAD:** Aluminum alloy with extra deep cooling fins.

**CONNECTING ROD:** I-Beam design. Aluminum alloy with large bearing area.

**VALVES:** Heat treated alloy steel intake, austenitic steel exhaust.

**VALVE SEATS:** One piece iron alloy insert cast integrally into cylinder.

**VALVE LIFTERS:** Precision machined and heat treated.

**VALVE GUIDES:** Iron alloy inserts.

**STARTER:** Positive rewind, dust sealed self-lubricating. Large easy grip, rubber handle.

**NET WEIGHT:** Approximately 23 pounds.

#### FUEL SYSTEM:

**AIR CLEANER:** Replaceable, extra fine filtration, non-by passable, pleated paper element, with dust and water shield cover.

**CARBURETOR:** Float bowl, manual choke. Provisions for mini-bike remote cable speed control.

Spark plug stop, plus provisions for remote stop.

**FUEL TANK:** Durable, rust proof 2 quart capacity with fuel strainer screen.

**GOVERNOR:** Most efficient mechanical type, in crankcase, for positive engine speed control. Heavy duty governor clamp.

**COMPRESSION RELEASE:** Relieves compression during starting cycle for quick, reliable starting.

**IGNITION:** High tension magneto system. Dust and moisture proof with extra large surface ignition breaker points. Rubber, moisture proof, spark plug cover.

**LUBRICATION:** Splash system — crankcase oil capacity 21 ounces.

**MUFFLER:** Special design for mini-bikes — tubular type with extension to direct heat and noise away from driver flange mounted — minimum back pressure.

**PAINT:** Attractive, long lasting baked enamel. Metal chemically cleaned and treated for permanent bonding. Color white.





# RUTTMAN

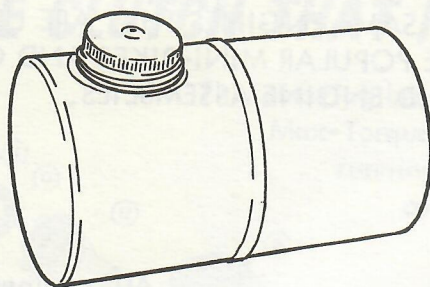
Phone: 313 - 278-5093

24732 Ford Road

# bikes

Dearborn Hts., Michigan 48127

## FUELER STYLE CHOPPER GAS TANK

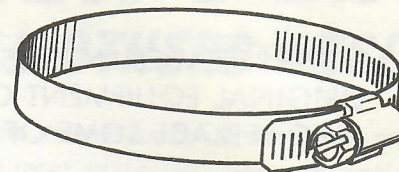


2 Quart steel tank, 4 1/2" O.D. and 7" long

CHROMED TANK Part no. 71000

UNCHROMED TANK Part no. 71001

## STAINLESS STEEL CHOPPER TANK STRAPS



Straps expand from 2 5/8" to 4 5/8"

Part no. 64004

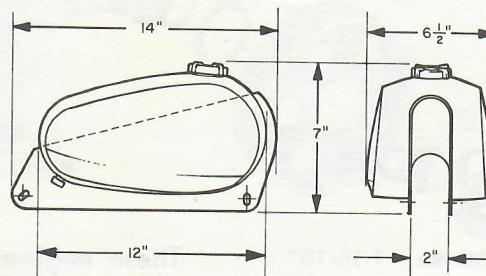
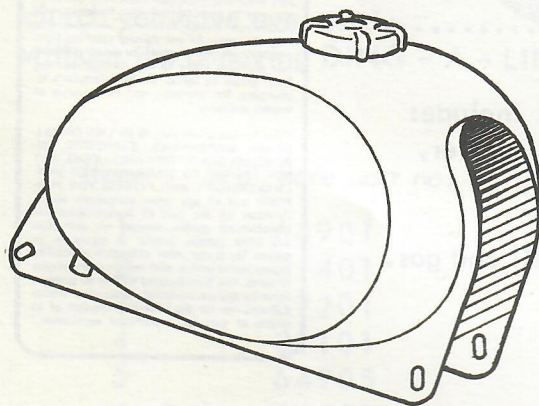
## CLEAR FUEL LINE



1/4" I.D. and 3/8" O.D. Vinyl tubing

Part no. 72500

## CYCLE STYLE TANK

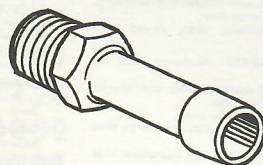


This unit, complete with automotive type twist cap, has the most recent "sculptured" look. Its overall teardrop shape is 12" long, just enough to fit many popular mini-bikes. It is baffled in its design and has ample mounting facilities. It will hold 4 1/2 quarts, plenty for miles and miles of riding.

UNPAINTED TANK ONLY

Part no. 71002

## FUEL LINE FITTING



Metal fitting with 3/8" standard pipe thread for use with 1/4" I.D. fuel line.

Part no. 72400

## VELOCITY STACK



Fits on 3, 4 & new small block 5 h.p. Tecumseh engine.

Part no. 72600





# **RUTTMAN**

Phone: 313 - 278-5093

24732 Ford Road

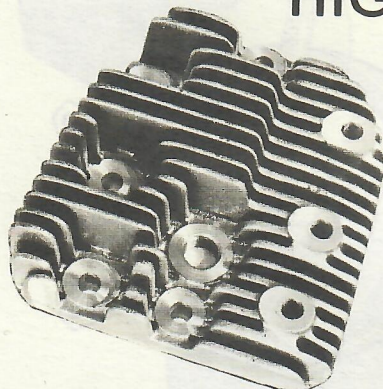
# **bikes**

Dearborn Hts., Michigan 48127

## **HIGH PERFORMANCE PARTS**

### **HIGH COMPRESSION HEAD**

FOR THE 4 H.P. TECUMSEH ENGINE ONLY



MADE OF HIGH-STRENGTH ALUMINUM, IT GIVES INCREASED COMPRESSION, BETTER COOLING AND MORE EFFICIENT CUMBUSTION RESULTING IN MORE POWER.

Part no. 30500

### **RACING PISTONS**

FOR THE 4 H.P. TECUMSEH ENGINE ONLY

STANDARD SIZE RACING PISTON

Part no. 30521

.020 OVERSIZE RACING PISTON

Part no. 30522

.030 OVERSIZE RACING PISTON

Part no. 30523

.040 OVERSIZE RACING PISTON

Part no. 30524



### **CONNECTING RODS**

HEAVY DUTY ALUMINUM BILLET CONNECTING ROD  
A NECESSITY FOR ANY RACING ENGINE



FOR 3 H.P. TECUMSEH ENGINE

Part no. 30551

FOR 4 H.P. TECUMSEH ENGINE

Part no. 30552

FOR 5 H.P. (new small block) TECUMSEH ENGINE

Part no. 30553

FOR 5 H.P. BRIGGS & STRATTON ENGINE

Part no. 30554

### **HIGH PERFORMANCE CAMSHAFTS**

REPLACE YOUR STANDARD CAM WITH ONE OF THESE  
HIGH PERFORMANCE CAMS THAT ARE RACE GROUND  
FOR MAXIMUM PERFORMANCE.

FOR 3 H.P. TECUMSEH ENGINE

Part no. 30571

FOR 4 H.P. TECUMSEH ENGINE

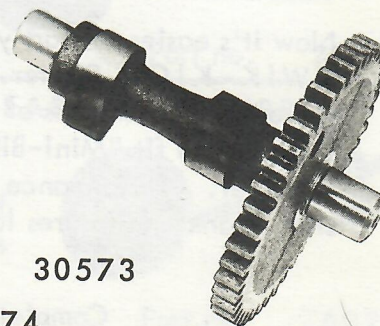
Part no. 30572

FOR 5 H.P. (new small block) TECUMSEH ENGINE

Part no. 30573

FOR 5 H.P. BRIGGS & STRATTON ENGINE

Part no. 30574







# RUTTMAN

Phone: 313 - 278-5093

24732 Ford Road

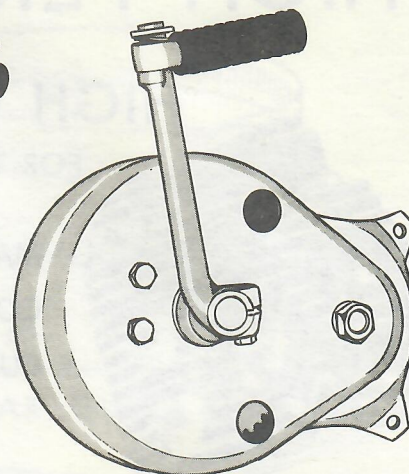
**Mini-Bikes**  
Dearborn Hts., Michigan 48127

## The most desired Mini-Bike accessory,

### KIK-START

BY

hegar®products



Hegar's fabulous KIK-START, bolts on in minutes. Makes any mini look and start like a motorcycle. Heavy duty construction, chrome all steel splined shaft, folding kick peg make for an accessory that's as durable as it is functional. The all new and improved KIK-START will fit most Tecumseh engines. Mounting bolts and nuts included.

Complete unit - ready to install

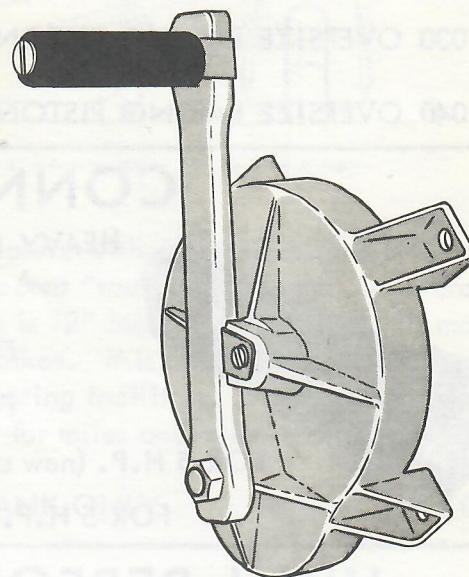
Part no. 76501

## KWIK-KICK

FROM



**Colt Industries**



Now it's easier to start your "Mini-Bike" with this all new, low profile Fairbanks Morse KWIK-KICK Starter. It's a compact and reliable starting unit engineered to meet the exacting demands of "Mini-Bike" buffs everywhere for better engine starting. Designed to fit "Mini-Bike" engines up to 6 H.P. with a bolt mounting circle of 5 9/16" diameter. Performance proved starting mechanism, hardened alloy gears plus a forged steel crank arm insures long, low cost service life.

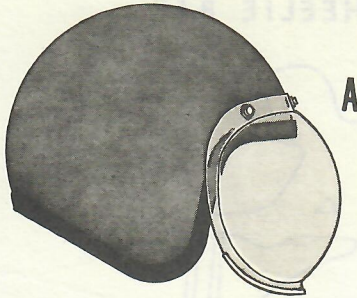
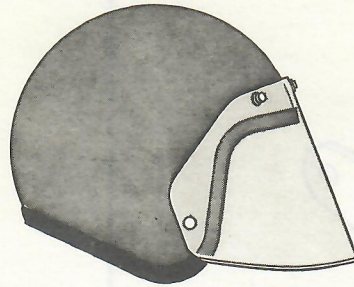
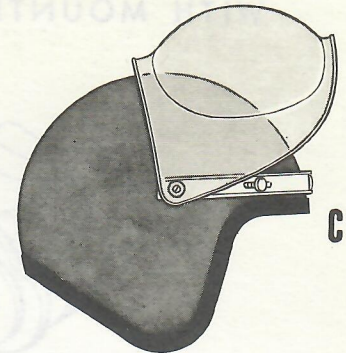
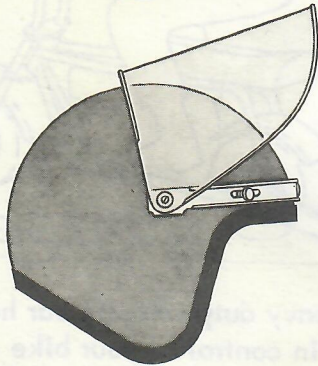
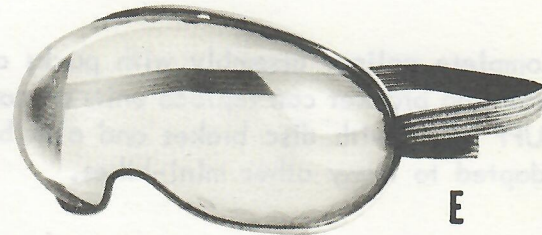
Complete unit - ready to install

Part no. 76502





## FACESHIELDS

**A****B****C****D****E**

- A. SNAP-ON BUBBLE SHIELD cuts drag and turbulence to reduce rider fatigue. Dual snaps permit use with or without a separate sun visor.

Part no. 76201 Specify color: Clear, Smoke, Blue, Amber, Yellow, Green.

- B. SNAP-ON COMP SHIELD offers protection against rocks, dirt and other flying objects during competition or hard riding. It can be used with or without a separate sun visor.

Part no. 76202 Specify color: Clear, Smoke, Blue, Amber, Yellow.

- C. FLIP-UP BUBBLE SHIELD with adapter conveniently flips over helmet at a touch.

Part no. 76203 Specify color: Clear, Smoke, Blue, Amber, Yellow.

- D. FLIP-UP COMP SHIELD with adapter conveniently flips out of the way.

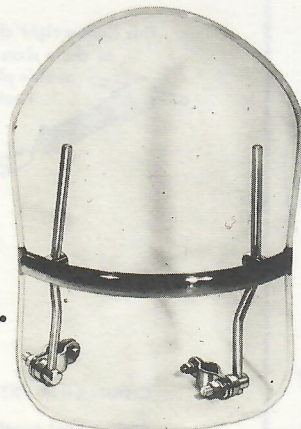
Part no. 76204 Specify color: Clear, Smoke, Blue, Amber, Yellow.

- E. BUBBLE GOGGLES made of quality optical plastic and curved to fit the contour of the face offer maximum visibility and protection.

Part no. 76205 Specify color: Clear, Lt. Blue, Lt. Green, Green, Lt. Amber, Amber.

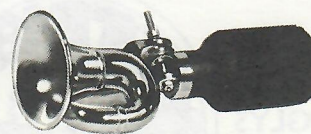
## WINDSHIELD

Heavy duty plastic. Provides protection from wind and dust. Fits most any mini-bike and some small motorcycles. Ready to bolt on. Size: 13" wide, 19" high.



Part no. 76051

## BUGLE BULB HORN



Fits all handlebars

Part no. 76001

## CHROME REAR VIEW MIRROR

Adds the safety of rear vision. Fits all handlebars.

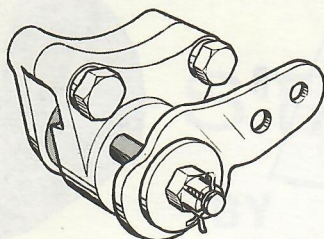


Part no. 76026





## DISC BRAKE CALIPER ASSEMBLY WITH MOUNTING BRACKET



Complete caliper assembly with pucks and mounting bracket can replace units on early RUPP bikes with disc brakes and also be adapted to many other mini-bikes.

Part no. 97026

## DECALS & PATCHES

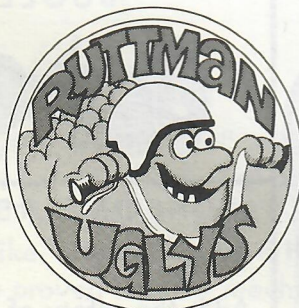


3" x 4" RUTTMAN "R"  
Red & blue "R" with  
black lettering.

SELF ADHESIVE DECAL Part no. 75000

SEW-ON CLOTH PATCH Part no. 75201

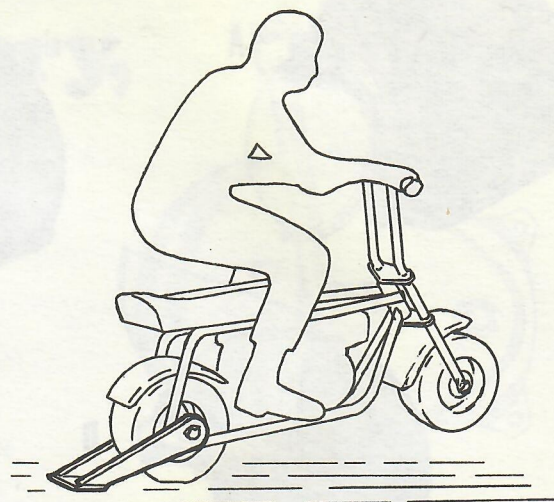
4" dia. RUTTMAN UGLYS  
Full color.



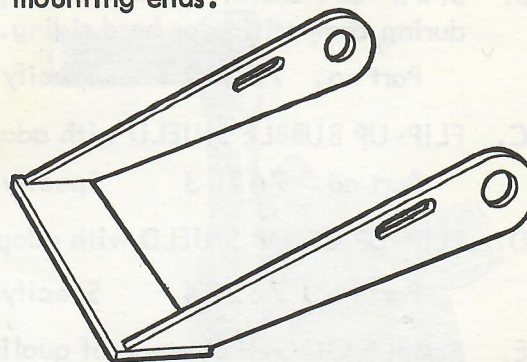
SELF ADHESIVE DECAL Part no. 75002

IRON-ON TRANSFER Part no. 75501

## WHEELIE BAR



This heavy duty wheelie bar helps you maintain control of your bike on fast, full power take-offs especially when racing. Fits all small RUTTMAN mini-bikes and many of the other brands that use 5/8" dia. rear axles. Wheelie bar measures 8" between mounting ends.

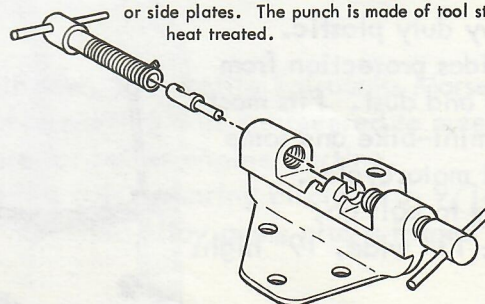


Part no. 27201

## CHAIN BREAKER

A HANDY TOOL TO REMOVE AND REPLACE PINS IN CHAIN LINKS

This light weight chain breaker is used for rapid disassembling of chain sizes #35, #40 and #41 without damage to pins or side plates. The punch is made of tool steel and heat treated.



CHAIN LINK EXTRACTOR Part no. 94001

Replacement punch only Part no. 94002





# RUTTMAN

# Mini-Bikes

Phone: 313 - 278-5093

24732 Ford Road

Dearborn Hts., Michigan 48127

THE PRICES LISTED IN THIS CATALOG ARE SUGGESTED RETAIL PRICES. DUE TO SHIPPING EXPENSES INCURRED BY DEALERS, THEIR ACTUAL SELLING PRICE OF SOME PRODUCTS MAY BE HIGHER THAN THE SUGGESTED RETAIL PRICE SHOWN HERE.

TOAD KIT LESS ENGINE, CLUTCH AND CHAIN \$84.95

## COMPLETE UNITS - PAINTED AND ASSEMBLED

Horny Toad	4 H.P.	\$ 169.95	Grasshopper	5 H.P.	264.95
	5 H.P.	179.95			
Wild Goose	4 H.P.	179.95	Fun Kart	4 H.P.	264.95
	5 H.P.	189.95			
Spyder	4 H.P.	214.95			
	5 H.P.	224.95			

Part no.	Price each	Part no.	Price each	Part no.	Price each	Part no.	Price each	Part no.	Price each	Part no.	Price each
12400	.59	22202	4.89	31426	3.39	42520	4.59	66501	3.69	80000	4.99 set
12550	.59	22203	4.89	31427	3.39			66502	.19	80001	4.29
12700	.69	24000	2.39	31451	1.89			66503	1.19	80002	1.19
14001	6.49	24001	2.79	31900	.19			67000	1.49	80003	1.99 set
14002	6.49	24002	3.89	34000	1.59Ft.	60100	.19	67002	1.89	80010	4.99 set
14003	9.89	24100	3.69	34001	5.79	60101	.19	67201	.89	80013	1.99 set
14004	9.89	24101	4.69	34003	6.29	60102	.19	67202	.89	80015	5.99 set
14005	4.29	24200	6.89	34004	6.89	60103	.19	68001	.09	80020	4.99 set
14006	4.29	24300	1.19	34007	4.09	60104	.19	69001	2.29	81000	1.99
14007	5.49	24301	.59	34150	2.69Ft.	60160	.19			81001	2.29
14008	5.49	24303	1.19	34200	1.69Ft.	60162	.19			82000	2.39
14009	3.29	24304	1.79	34500	.29	60163	.19			82001	4.59
14010	9.29	24306	.59	34501	.29	60180	.19			82002	4.89
14011	9.29	24309	.59	34502	.29	60240	.19			83000	1.99
14012	2.49	24310	1.49	34525	.59	60280	.19			83001	2.29
16000	.29	24311	1.49	34526	.49	60282	.19			83002	2.99
16001	5.29	24312	1.49	34550	.59	60283	.19			83003	1.89
16003	1.19	27000	39.99	34551	.59	60284	.19			83004	1.89
16004	.59	27001	29.99	34552	.59	60285	.19	70000	10.99	84000	2.39
16005	3.49	27002	13.29	34600	.49	60440	.69	70001	12.99	84001	4.39
16006	1.19	27100	11.99	34601	.49	60740	1.59	70002	16.29	84002	3.59
16007	1.19	27200	3.69	34602	.49	60741	2.09	70003	21.99	84003	4.39
16008	.59	27302	15.99	35000	3.79	60742	1.99	70004	10.99	85000	1.69
16009	.59			35001	4.99	61701	.19	70500	3.99ea.	86000	.49
16010	.59			35401	2.09	61900	.19	71000	9.99	86100	.29
16011	.59			35402	2.49	63023	.14	71001	8.69	86200	.59
16012	.59			35404	2.79	63029	.14	71002	9.99	87001	1.59
16013	.59			35406	3.59	63034	.14	72400	.39		
16014	.59	30020	85.99	35408	3.99	63037	.19	72500	.72Ft.		
16015	1.19	30021	85.99			63220	.14	74050	.39		
16016	2.29	30022	100.99			63240	.14	74051	.39		
16017	3.09	30025	95.99			63341	.49	74052	.39		
16018	1.19	30027	107.99			63525	.29	74100	.39		
16019	1.19	30500	22.19			63540	.29	74104	.39		
16020	1.49	30521	20.09			63556	.29	74105	.39	94001	2.29
16021	1.19	30522	20.09			63790	.19	74106	.39	94002	.29
16022	1.19	30523	20.09			64000	.19	74107	.39	97001	2.26 set
16023	1.19	30524	20.09			64002	.59	74108	.39	97002	3.99 set
16025	.59	30551	31.39			64003	.59	74109	.39	97003	12.49 kit
16026	.59	30552	31.39			64004	1.19	75000	.29	97006	6.24 kit
18001	.29	30553	31.39			64900	.29	75001	.29	97007	12.19 kit
18002	.69	30554	31.39			64901	.29	75002	.29	97012	9.99 kit
18004	.29	30571	27.59			64902	.29	75201	.49	97013	14.99 kit
		30572	27.59			64903	.59	76001	3.79	97015	29.99 kit
		30573	27.59			64905	.89	76201	4.39	97016	26.39 kit
22000	10.49	30574	27.59	40001	3.09	64906	.89	76202	2.09	97017	11.59 kit
22001	10.49	31000	16.99	40022	4.89	65050	.09	76203	8.09	97018	24.99 kit
22002	6.49	31010	16.99	42000	9.49	65080	.09	76204	6.19	97019	28.69 kit
22003	7.89	31101	4.39	42001	10.79	65110	.09	76205	1.69	97020	22.69 kit
22100	22.99	31102	4.39	42030	10.79	65550	.09	77000	.19	97021	26.29 kit
22101	22.99	31201	1.89	42060	12.29	65610	.09	77001	.19	97022	9.99 kit
22102	33.99	31301	6.29 set	42061	12.29	66231	.19	77011	1.79	97023	21.29 kit
22103	31.99	31401	4.69	42500	4.19	66291	.19	77012	1.79	97024	31.39 kit
22104	68.99	31402	4.69	42510	1.59	66500	.19	77021	9.99	97025	6.29 kit

Prices are subject to change without notice.