

**Speedway**  
PRODUCTS, INC.



*April-12-71*

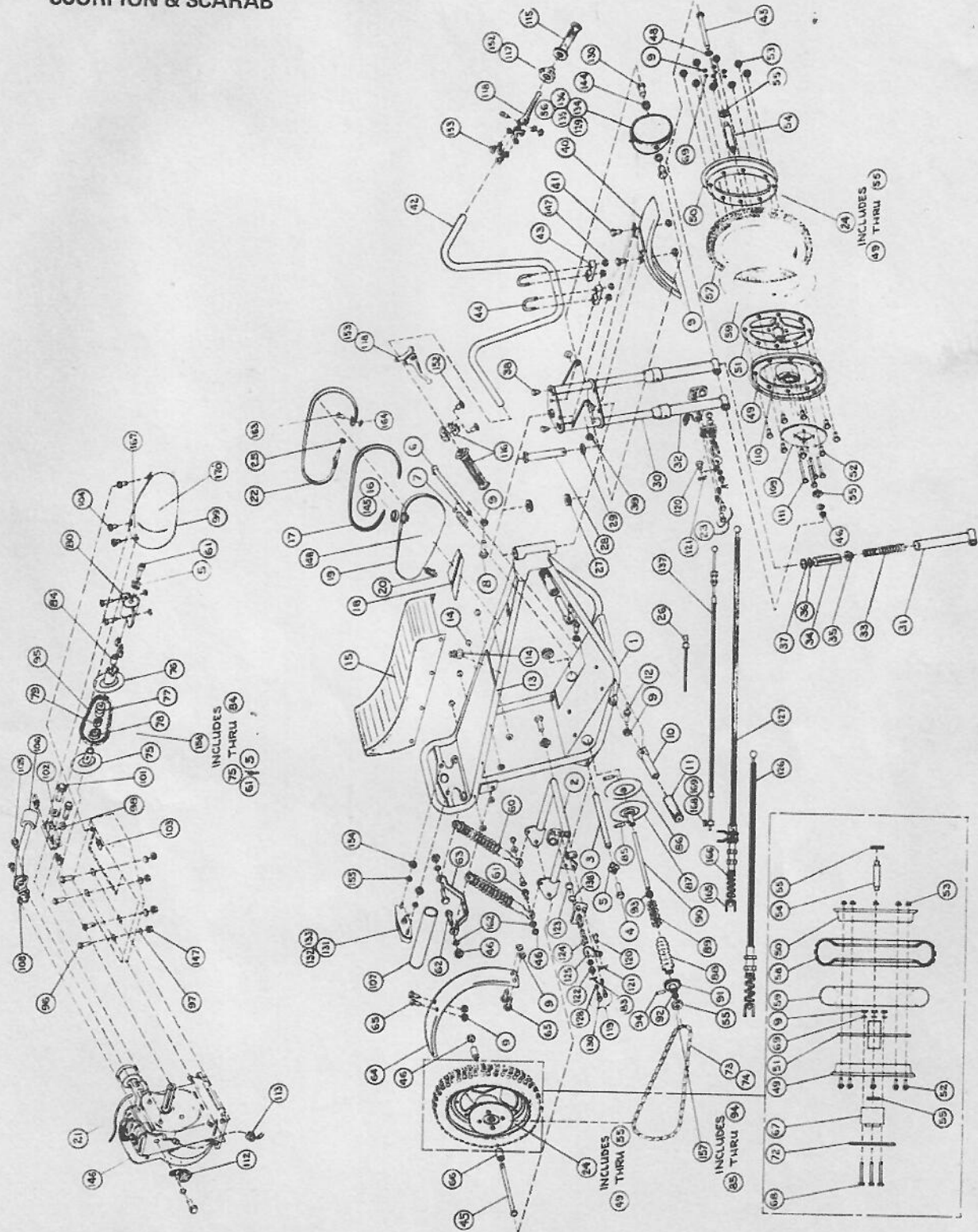
*DPE 518-462-6722  
Rosken - Pilco PARTS*

# **SPORT CYCLE PARTS and PRICE LIST**

1970

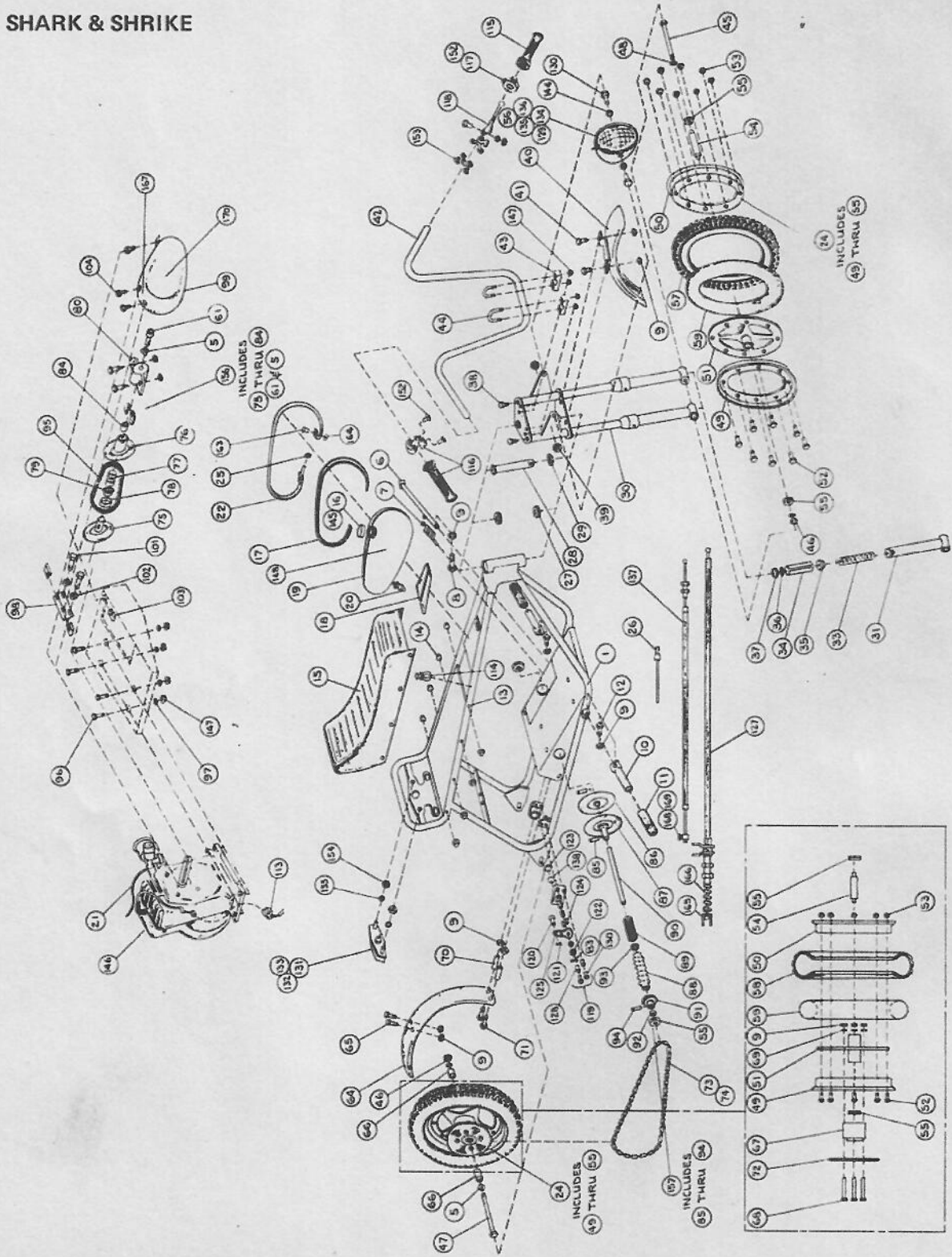
SPORT CYCLE PARTS/PRICE LIST

SCORPION & SCARAB



SPORT CYCLE PARTS/PRICE LIST

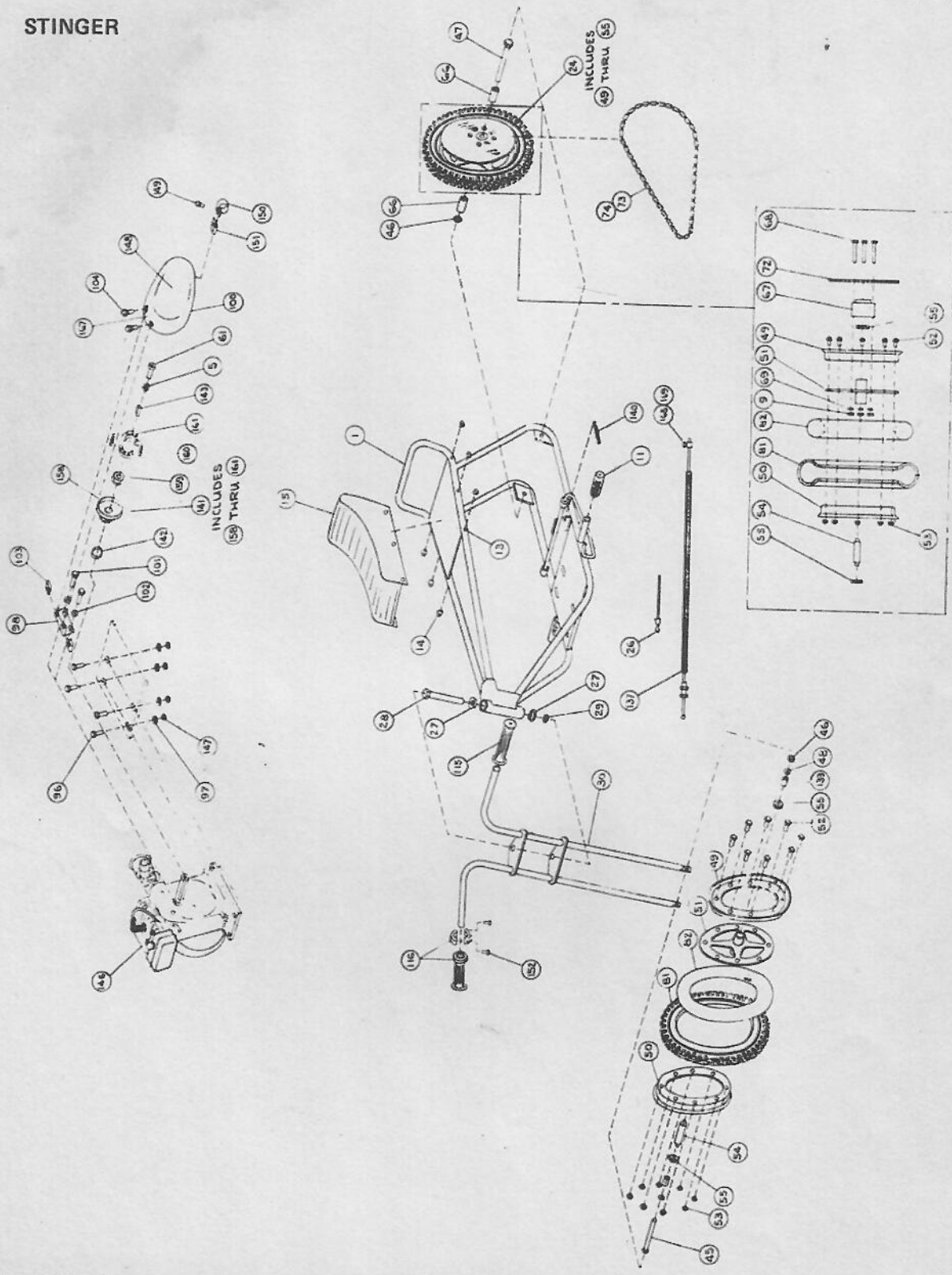
SHARK & SHRIKE





SPORT CYCLE PARTS/PRICE LIST

STINGER



## SPORT CYCLE PARTS/PRICE LIST

REF. NO.	DESCRIPTION	PART NO.	NO. REQ'D.				
			SCORPION	SCARAB	SHARK	SHRIKE	STINGER
1	Frame Assembly (Specify Color) Frame Assembly (Specify Color) Frame Assembly, Gold Frame Assembly, Red Frame Assembly, Blue	10044 10251 10167 10255 10213	1	1	1	1	1
2	Swing Arm Assembly (Specify Color)	10022	1	1			
3	Pivot Rod	10073	1	1			
4	3/8-24 x 1" Hex Head Cap Screw		2	2			
5	3/8" Everlock Washer	10241	3	3	3	3	1
6	Kickstand Assembly	10130	1	1	1	1	
7	Kickstand Return Spring	10134	1	1	1	1	
8	1/4-20 x 1-1/4" Hex Head Cap Screw		1	1	1	1	
9	1/4-20 Conelock Nut		17	13	13	13	4
10	Foot Pedal Folding	10027	2	2	2	2	
11	Foot Pedal Cover	10124	2	2	2	2	2
12	1/4-20 x 7/8" Hex Head Cap Screw		2	2	2	2	
13	Rivet	10129	8	8	8	8	6
14	Seat Snap	10128	8	8	8	8	6
15	Seat	10127	1	1			
	Seat	10204			1	1	
	Seat	10205					1
16	Fuel Gauge Gas Cap	10196	1				
	Fuel Tank Cap, Chrome	10173		1	1	1	
17	Tank Strap Spacer	10145	1	1	1	1	
18	Tank Mounting Cushion	10152	1	1	1	1	
19	Fuel Tank (Specify Color)	10115	1	1	1	1	
20	Fuel Line Connector	10116	1	1	1	1	
21	Fuel Line (Specify Length)	10117	1	1	1	1	
22	Tank Strap Assembly	10181	1	1	1	1	
23	Brake Assembly, Front	10272	1	1			
24	10" Wheel Assembly W/Bearings, less Tire & Tube	10083	2	2	2	2	2
25	1/4-28 Conelock Nut		1	1	1	1	
26	Cable Tie	10077	6	4	6	2	1
27	Bearing	10146	2	2	2	2	
	Bearing	10198					2
28	Steering Column Bolt	10172	1	1	1	1	1
29	5/8-18 Conelock Nut		1	1	1	1	1
30	Fork Assembly, Chrome	10053	1		1		
	Fork Assembly, Chrome	10245		1		1	
	Fork Assembly, Blue	10224					1
31	Lower Shock Tube	10059	1	1	2	2	
32	Lower Shock Tube W/Bracket	10199	1	1			
33	Shock Spring	10082	2	2	2	2	
34	Nylon Wear Sleeve	10062	2	2	2	2	
35	Hydraulic Restrictor	10063	2	2	2	2	
36	Shock Tube Seal Packing	10064	2	2	2	2	
37	Shock Tube Seal Retainer	10253	2	2	2	2	
38	1/4" N.P.T. Pipe Plug	10081	2	2	2	2	
39	Amber Safety Reflector	10139	2	2	2	2	
40	Front Fender Assembly	10094	1	1	1	1	
41	1/4-20 x 5/8" Hex Head Cap Screw		2	2	2	2	
42	Handlebar	10032	1	1	1	1	
43	Handlebar Clamp	10005	2	2	2	2	
44	Handlebar "U" Bolt	10001	2	2	2	2	
45	Axle Bolt	10076	2	2	1	1	

## SPORT CYCLE PARTS/PRICE LIST

REF. NO.	DESCRIPTION	PART NO.	NO. REQ'D.	NO. REQ'D.	NO. REQ'D.	NO. REQ'D.	NO. REQ'D.
			SCORPION	SCARAB	SHARK	SHRIKE	STINGER
	Axle Bolt	10171					1
46	3/8-24 Conelock Nut		6	6	2	2	2
47	Axle Bolt	10256			1	1	1
48	3/8" U.S.S. Flat Washer		2	2	2	2	2
49	10" Rim W/Hole	10142	2	2	2	2	2
50	10" Rim W/O Hole	10163	2	2	2	2	2
51	Hub & Spoke Assembly	10021	2	2	2	2	2
52	Acorn Bolt	10159	16	16	16	16	16
53	Acorn Nut	10158	16	16	16	16	16
54	Bearing Spacer	10080	2	2	2	2	2
55	Bearing	10103	6	6	6	4	4
56	Headlight Bezel	10264	1		1		
57	3/50 x 10" Universal Tire	10200	1	1	1	2	
58	3/50 x 10" Moto Cross Tire	10201	1	1	1		
59	3/50 x 10" Innertube	10274	2	2	2	2	
60	Rear Shock Absorber	10075	2	2			
61	3/8-24 x 1-1/4" Hex Head Cap Screw		5	5	1	1	1
62	3/8-24 x 1-1/2" Hex Head Cap Screw		2	2			
63	Rear Fender Bracket	10087	1	1			
64	Rear Fender	10136	1	1	1	1	
65	1/4-20 x 1/2" Hex Head Cap Screw		4	4	2	2	
66	Axle Spacer	10084	2	2			
	Axle Spacer	10175			2	2	
	Axle Spacer	10222					2
67	Sprocket Spacer	10108	1	1	1	1	1
68	1/4-20 x 3" Hex Head Cap Screw		4	4	4	4	4
69	1/4" Internal Lock Washer		8	4	4	4	4
70	Rear Fender Spacer	10186			2	2	
71	1/4-20 x 1-1/8" Hex Head Cap Screw			2	2	2	
72	Drive Sprocket, 48 Tooth	10025	1	1	1		
	Drive Sprocket, 68 Tooth	10206				1	1
73	Drive Chain, 80 Pitch	10106	1	1	1		
	Drive Chain, 92 Pitch	10228				1	
	Drive Chain, 108 Pitch	10210					1
74	Master Link	10109	1	1	1	1	1
75	Fixed Drive Sheave Assembly	10090	1	1	1	1	
76	Moveable Drive Sheave Assembly	10091	1	1	1	1	
77	Drive Converter Spring	10038	1	1	1	1	
78	Belt Roller	10037	1	1	1	1	
79	Belt Roller Retainer	10260	1	1	1	1	
80	Drive Cover Assembly	10092	1	1	1	1	
81	2/50 x 10" Universal Tire and Tube	10297					1
82	2/50 x 10" Moto Cross Tire and Tube	10298					1
83	1/16 x 1/2" Cotter Pin		2	2	1	1	
84	Crankshaft Spacer	10041	1	1	1	1	
85	Drive Pin	10244	2	2	1	1	
86	Fixed Driven Sheave Assembly	10161	1	1	1	1	
87	Moveable Driven Sheave Assembly	10162	1	1	1	1	
88	Driven Converter Boot	10184	1	1	1	1	
89	Driven Shifter Spring	10099	1	1	1	1	
90	Jackshaft	10102	1	1	1	1	
91	Sprocket, 8 Tooth	10231	1	1	1	1	
	Sprocket, 10 Tooth (Optional)	10016					
92	Sprocket Spacer	10107	1	1	1	1	
93	Jackshaft Shim	10232	1	1	1	1	



1970

## SPORT CYCLE PARTS/PRICE LIST

REF. NO.	DESCRIPTION	PART NO.	NO. REQ'D.	NO. REQ'D.	NO. REQ'D.	NO. REQ'D.	NO. REQ'D.
			SCORPION	SCARAB	SHARK	SHRIKE	STINGER
94	Roll Pin	10105	2	2	2	2	
95	Drive Belt	10098	1	1	1	1	
96	5/16-18 x 1-1/4" Hex Head Cap Screw		4	4	4	4	4
97	5/16" S. A. E. Flat Washer		4	4	4	4	4
98	Guard Bracket	10120	1	1	1	1	1
99	Torque Converter Guard	10119	1	1	1	1	
100	Chain Guard	10211					1
101	5/16-24 x 1/2" Phillips, Pan Head Machine Screw		2	2	2	2	2
102	5/16" Internal Star Lock Washer		2	2	2	2	2
103	Tinnerman Nut	10160	3	3	3	3	2
104	1/4-20 x 3/8" Phillips, Pan Head Machine Screw		3	3	3	3	2
105	1/4-20 x 1/2" Phillips, Fillister Head Machine Screw		2	2	3	3	3
106	Exhaust Pipe & Muffler Assembly	10125	1	1			
107	Muffler Extension Assembly	10126	1	1			
108	Exhaust Pipe Gasket	10191	1	1			
109	Front Brake Disc	10188	1	1			
110	Front Brake Spacer	10240	1	1			
111	1/4-20 x 2-1/4" Hex Head Cap Screw		4	4			
112	Horn	10140	1				
113	Wiring Harness	10112	1				
	Wiring Harness	10235					
114	Kill Button	10141	1		1		
115	Dummy Grip	10056	1	1	1		
116	Twist Grip Assembly W/Grip	10055	1	1	1	1	1
117	Dimmer Switch & Horn Button	10111	1		1	1	1
118	Brake Lever Assembly	10058	2	2	1	1	
119	Brake Assembly, Rear	10074	1	1	1	1	
120	Clevis Pin	10190	2	2	1	1	
121	3/32 x 1/2" Cotter Pin		4	4	2	2	
122	Castle Nut	10273	2	2	1	1	
123	Brake Puck, Pair	10269	2	2	1	1	
124	Brake Actuating Pin, Pair	10270	2	2	1	1	
125	Brake Actuating Lever	10271	2	2	1	1	
126	Front Brake Cable	10203	1	1	1	1	
127	Brake Cable W/Switch	10088	1		1		
	Brake Cable W/O Switch	10182		1		1	
128	Brake Screw Bushing	10276	4	4	2	2	
129	5/16-18 x 1" Hex Head Cap Screw		6	4	2	2	
131	Tailight Assembly	10113	1		1		
132	Tailight Lens	10267	1		1		
133	Tailight Bulb	10268	1		1		
134	Headlight Assembly	10110	1		1		
135	Headlight Lens	10266	1		1		
136	Headlight Bulb	10265	1		1		
137	Throttle Cable	10057	1	1	1		
138	Back Up Washer	10275	1	1	1	1	1
139	Wheel Spacer	10227					
140	Brake Return Spring	10221					2
141	Clutch Assembly, 9 Tooth	10187					1
142	Clutch Spacer	10209					1
143	Clutch Key	10208					1
144	5/16" Split Lock Washer		2		2		1
145	Gasket, Fuel Tank Cap	10261	1	1	1	1	
146	Engine, HS 40 W/Alternator	10147	1				
	Engine, HS 40 W/O Alternator	10148		1			

## SPORT CYCLE PARTS/PRICE LIST

REF. NO.	DESCRIPTION	PART NO.	NO. REQ'D.				
			SCORPION	SCARAB	SHARK	SHRIKE	STINGER
	Engine, HS 30 W/Alternator	10149			1		
	Engine, HS 30 W/O Alternator	10150				1	
	Engine, HS 25 W/Tank	10183					1
147	5/16-18 Conelock Nut		8	8	8	8	4
148	Decal, Scorpion (R & L Hand)	10121	2				
	Decal, Scarab (R & L Hand)	10192		2			
	Decal, Shark (R & L Hand)	10193			2		
	Decal, Shrike (R & L Hand)	10194				2	
	Decal, Stinger (L Hand Only)	10195					1
149	#10-24 x 3/8" Phillips, Fillister Head Machine Screw						1
150	Tinnerman Clamp	10287					1
151	Tinnerman Clip	10288					1
152	#10-28 x 9/16" Phillips, Fillister Head Machine Screw		4	2	4	2	2
153	#10-32 x 7/16" Phillips, Fillister Head Machine Screw		4	4	2	2	2
154	#10-28 Hex Nut		2		2		
155	#10 Split Lock Washer		2		2		
156	Drive Torque Converter Assembly	10089	1	1	1	1	
157	Driven Torque Converter Assembly	10123	1	1	1	1	
158	Clutch Housing, 9 Tooth	10289					1
159	Clutch Shoe Retainer	10290					1
160	Clutch Spring, Pair	10291					2
161	Clutch Shoe, Pair	10292					2
162	3/8" S.A.E. Flat Washer		4	4			
163	Rivet	10179	1	1	1	1	
164	3/16" S.A.E. Flat Washer		1	1	1	1	
165	Brake Cable Clevis	10246	2	2	1	1	
166	Brake Cable Spring	10249	2	2	1	1	
167	Decal, Caution	10122	1	1	1	1	1
168	Throttle Cable Clamp W/Screw	10166	1	1	1	1	1
169	#10-32 x 1/4" Hex Head Slotted Machine Screw		1	1	1	1	1
170	Decal, Dyna Torque "400"	10293	1	1	1	1	1
171	Clutch Bushing	10263					1



# COLLATERAL MATERIAL

<u>PART NUMBER</u>	<u>DESCRIPTION</u>	<u>PRICE</u>
10325	Illuminated Sign	\$95.00 ea.
10236	Speedway Brochure	.10 ea.
10237	Statement Stuffer	.03 ea.
10238	Hang Tag	.03 ea.
10239	Wall Banner	.35 ea.
10277	Operation & Maintenance Manual	.25 ea.
10278	Speedway Cloth Emblem	.40 ea.
10301	Parts & Price Catalog	FREE
10304	Truck Decal (Set of 2)	2.00 pr.
10305	Speedway Decal	.10 ea.
	Mini Bike Guide Reprint	FREE

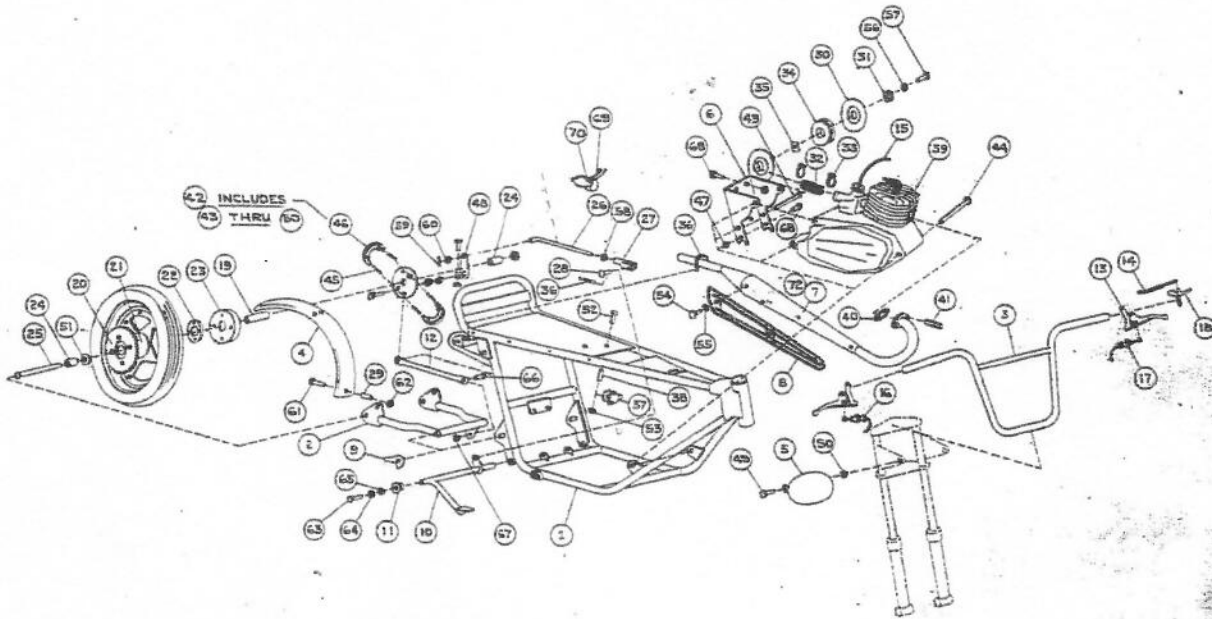
EFFECTIVE JAN. 1970

THE PRICES LISTED IN THIS CATALOG ARE SUGGESTED LIST PRICES ONLY AND ARE F.O.B. MANSFIELD, OHIO.

THE PARTS LISTED ARE CURRENT AND BASED ON THE LATEST INFORMATION AND ARE SUBJECT TO CHANGE WITHOUT NOTICE AND WITHOUT INCURRING OBLIGATION.

## SILVER SHADOW PARTS LIST

1970



REF. NO.	DESCRIPTION	PART NO.	NO. REQ'D.
1	Frame Assembly w/o Light Bracket, Cortez Silver	10315	1
	Frame Assembly W/Light Bracket, Cortez Silver	10376	1
2	Swing Arm Assembly	10318	1
3	Handlebar Assembly	10347	1
4	Rear Fender	10336	1
5	Number Panel (Specify Cortez Silver)	10259	1
6	Rear Motor Mount Assembly	10332	1
7	Exhaust Pipe	10397	1
8	Exhaust Pipe Guard	10391	1
9	Swing Arm Adjusting Cam	10286	2
10	Brake Arm Assembly	10351	1
11	Brake Bushing	10382	2
12	Brake Anchor Tube	10314	1
13	Brake Lever	10401	2
14	Choke Cable Housing	10414	1
15	Throttle Cable Housing	10404	1

REF. NO.	DESCRIPTION	PART NO.	NO. REQ'D.
16	Brake Cable Housing	10398	1
17	Clutch Cable Assy.	10448	1
18	Choke Lever	10416	1
19	Wheel Bearing Spacer	10408	1
20	Drive Sprocket, 32 Tooth	10337	1
21	Sprocket Spacer	10299	1
22	Brake Spacer	10300	1
23	Brake Drum	10380	1
24	Rear Axle Spacer	10407	2
25	Rear Axle	10335	1
26	Brake Rod	10387	1
27	Clevis End	10384	1
28	Clevis Pin	10402	1
29	Spacer	10175	1
30	Air Filter Cover	10316	1
31	Air Filter Cover Washer	10326	1
32	Air Filter Hose	10406	1
33	Air Filter Hose Clamp	10310	2
34	Air Filter	10327	1
35	Tinnerman Speednut	10160	1
36	Spring	10221	2
37	Coil	*	1
38	Coil Spacer	10378	2
39	Sachs Engine 125/5A	*	1
40	Exhaust Gasket	*	1
41	Exhaust Gasket & Pipe Nut	*	2
42	Brake Assembly	10381	1
43	5/16-18 x 3-3/4" Hex Head Cap Screw		2
44	5/16-18 x 8" Hex Head Cap Screw		1
45	Brake Spring, Pair	10424	1
46	Brake Shoe, Pair	10425	1
47	5/16-18 Cone Lock Nut		5
48	Brake Actuating Arm	10426	1
49	Acorn Bolt	10158	2
50	5/16-24 Cone Lock Nut		2
51	5/8" I.D. x 1" O.D. x .062 Flat Washer		1
52	10-32 x 1-1/2" Slotted Pan Head Machine Screw		3
53	10-32 Cone Lock Nut		2
54	1/4-28 x 3/8" Phillips Pan Head Machine Screw		3
55	1/4" Split Lock Washer		3
56	1/4" Internal Tooth Lock Washer		1
57	1/4-20 x 1" Hex Head Cap Screw		1
58	1/4-28 Jam Nut		1
59	3/32 x 1/2" Cotter Pin		1
60	1/4" Flat Washer		1
61	1/4-20 x 2" Hex Head Cap Screw		1
62	1/4-20 Cone Lock Nut		1
63	5/16-18 x 3/4" Hex Head Cap Screw		2
64	5/16" Split Lock Washer		2
65	5/16" S.A.E. Flat Washer		2
66	5/16-24 x 1/2" Hex Head Cap Screw		2
67	5/16-24 Cone Lock Nut		1
68	5/16-18 x 1/2" Hex Head Cap Screw		4
69	Wiring Harness	10431	1
70	Stop Light Switch	10445	1
72	Exhaust Silencer (Not Illustrated)	10445	1

\*Refer to Sach Parts Catalog for correct Part Numbers

For all other frame components not listed, refer to Sport Cycle Parts & Price Catalog (P.N. 10300).



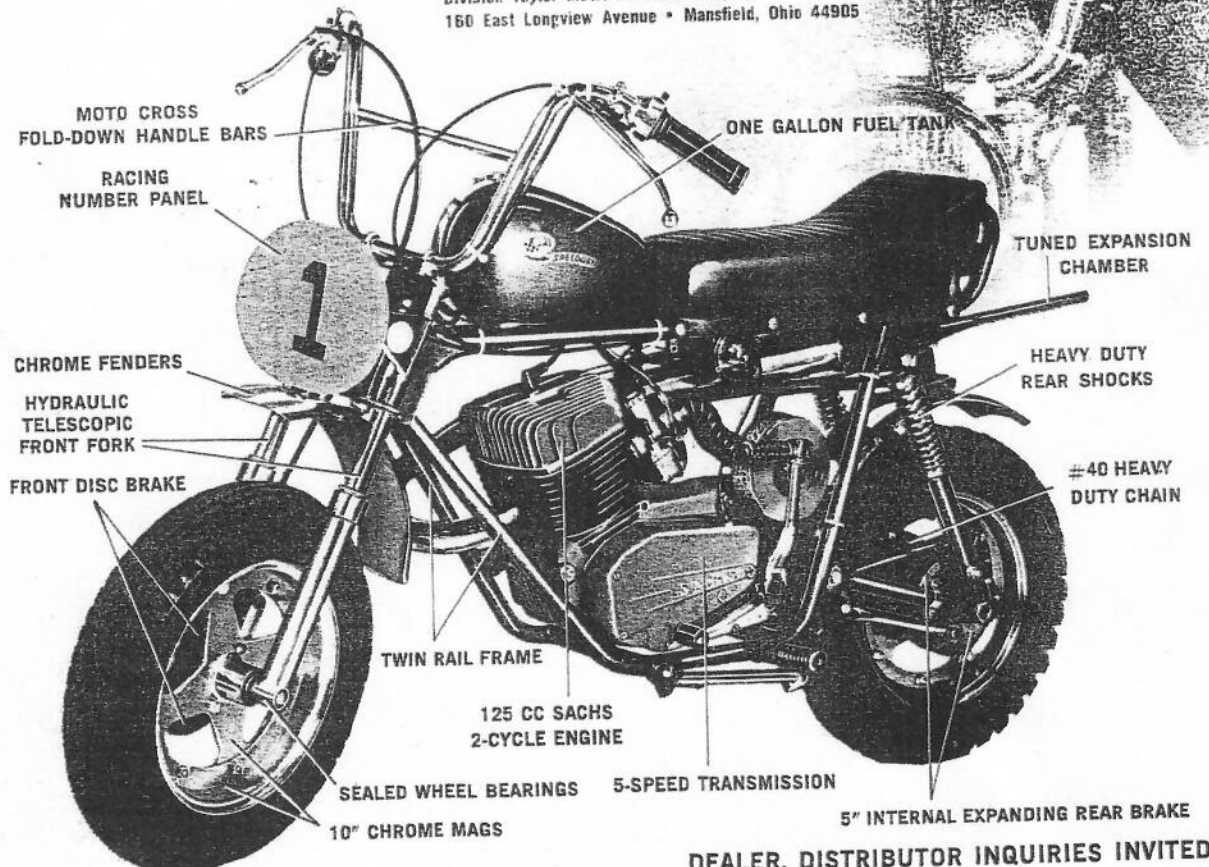
# the world's fastest mini-cycle the Speedway Silver Shadow SST

147 pounds of silver lightning — the mini-cycle that established the track record at the recent world championship rally. Kick over the race proven 125cc Sachs 2-cycle engine with tuned expansion chamber, and you're outta sight. This one hugs the trail — with sensitive, hydra-ride front suspension and chromed heavy-duty rear shocks. Ride stable on beautiful mag-style chrome wheels with Moto-Cross 10" tires. Race through the five-speed transmission — slam the brakes and watch the dirt spray. Front disk and 5" internal rear brake stops you cold.

For more information send 25¢ to:

**Speedway**  
PRODUCTS, INC.

Division Taylor Metal Products Company  
160 East Longview Avenue • Mansfield, Ohio 44905



DEALER, DISTRIBUTOR INQUIRIES INVITED

MAY 1971

1971 Speedway

SPECIFICATIONS

ELEMENT	SCORPION	SCARAB	SHARK	SHRIKE	STINGER	SILVER SHADOW SST	SILVER SHADOW SSR	SUPER BITCH
Engine	Tecumseh 172cc	Tecumseh 172cc	Tecumseh 127cc	Tecumseh 127cc	Tecumseh 2½ hp	Sachs 125cc	Sachs 125cc	
Drive	Dyna Torque 400 Torque Converter	Dyna Torque 400 Torque Converter	Dyna Torque 400 Torque Converter	Dyna Torque 400 Torque Converter	Centrifugal Clutch	5-speed Foot Operated	5-speed Foot Operated	
Front Suspension	Hydra-Ride	Hydra-Ride	Hydra-Ride	Hydra-Ride		Hydra-Ride	Hydra-Ride	
Drive chain	№ 40 HD Roller	№ 40 HD Roller	№ 40 HD Roller	№ 40 HD Roller	№ 40 HD Roller	№ 40 HD Roller	№ 40 HD Roller	
Lights	Dual Beam—Front Stop & Tail—Rear		Dual Beam—Front Stop & Tail—Rear				Dual Beam—Front Stop & Tail—Rear	
Alternator	12-volt		12-volt					
Rear Suspension	H.D. Chrome Shocks	H.D. Chrome Shocks				12-volt	12-volt	
Wheels	10" Chrome Mags	10" Chrome Mags	10" Chrome Mags	10" Chrome Mags	10" Chrome Mags	10" Chrome Mags	10" Chrome Mags	
Brakes	Front—Disc Rear—Internal Expanding Drum	Front—Disc Rear—Internal Expanding Drum	Rear—Internal Expanding Drum	Rear—Internal Expanding Drum	Rear—Scrub	Internal Expanding Drum	Internal Expanding Drum	
Front Tire	3/50 x 10" Universal	3/50 x 10" Moto Cross	3/50 x 10" Universal	3/50 x 10" Moto Cross	2/50 x 10" Universal	3/50 x 10" Moto Cross	3/50 x 10" Universal	
Rear Tire	3/50 x 10" Moto Cross	3/50 x 10" Moto Cross	3/50 x 10" Moto Cross	3/50 x 10" Moto Cross	3/50 x 10" Moto Cross	3/50 x 10" Moto Cross	3/50 x 10" Moto Cross	
Fenders	Chrome	Chrome	Chrome	Chrome		Chrome	Chrome	
Drive Cover	Chrome	Chrome	Chrome	Chrome	Chrome			
Front Fork	Chrome	Chrome	Chrome	Chrome	Painted	Chrome	Chrome	
Handle Bars	Chrome, Fold-down	Chrome, Fold-down	Chrome, Fold-down	Chrome, Fold-down	Painted	Chrome, Moto Cross Fold-down	Chrome, Moto Cross Fold-down	
Kickstand	Chrome-cycle	Chrome-cycle	Chrome-cycle	Chrome-cycle		Chrome-cycle	Chrome-cycle	
Fuel Tank	1-gallon	1-gallon	1-gallon	1-gallon	½-gallon	1-gallon	1-gallon	
Foot Pegs	Retractable	Retractable	Retractable	Retractable	Fixed	Retractable	Retractable	
Exhaust System	Chrome	Chrome	Chrome	Chrome	Painted	Tuned	Tuned	
Wheel Bearings	Lifetime Sealed Ball	Lifetime Sealed Ball	Lifetime Sealed Ball	Lifetime Sealed Ball	Lifetime Sealed Ball	Lifetime Sealed Ball	Lifetime Sealed Ball	
Fuel Gauge	Standard Equipment	Optional	Optional	Optional		Optional	Optional	
Frame	Wishbone	Wishbone	Wishbone	Wishbone	Double Rail	Wishbone	Wishbone	
Electric Horn	Standard Equipment		Optional					
Ignition Kill	Handlebar Mounted	Handlebar Mounted	Engine Mounted	Engine Mounted	Engine Mounted	Handlebar Mounted	Handlebar Mounted	
Wheel Base	40"	40"	40"	40"	38½"	40"	40"	
Overall Length	57"	57"	57"	57"	55"	59"	59"	
Height at Seat	26"	26"	25"	25"	24"	26"	26"	
Handle Bar Width	27½"	27½"	27½"	27½"	23½"	27½"	27½"	
Handle Bar Height—Folded	30"	30"	30"	30"		30"	30"	
Color	Bahama Blue Candy Red Grabber Green	Bahama Blue Candy Red Grabber Green	Grabber Green	Competition Red	Bahama Blue	Cortez Silver	Cortez Silver	
Weight	104 lbs.	100 lbs.	95 lbs.	90 lbs.	81 lbs.	143 lbs.	143 lbs.	

(See Your Speedway Dealer for Specifications on This Model)

## WARRANTY POLICY

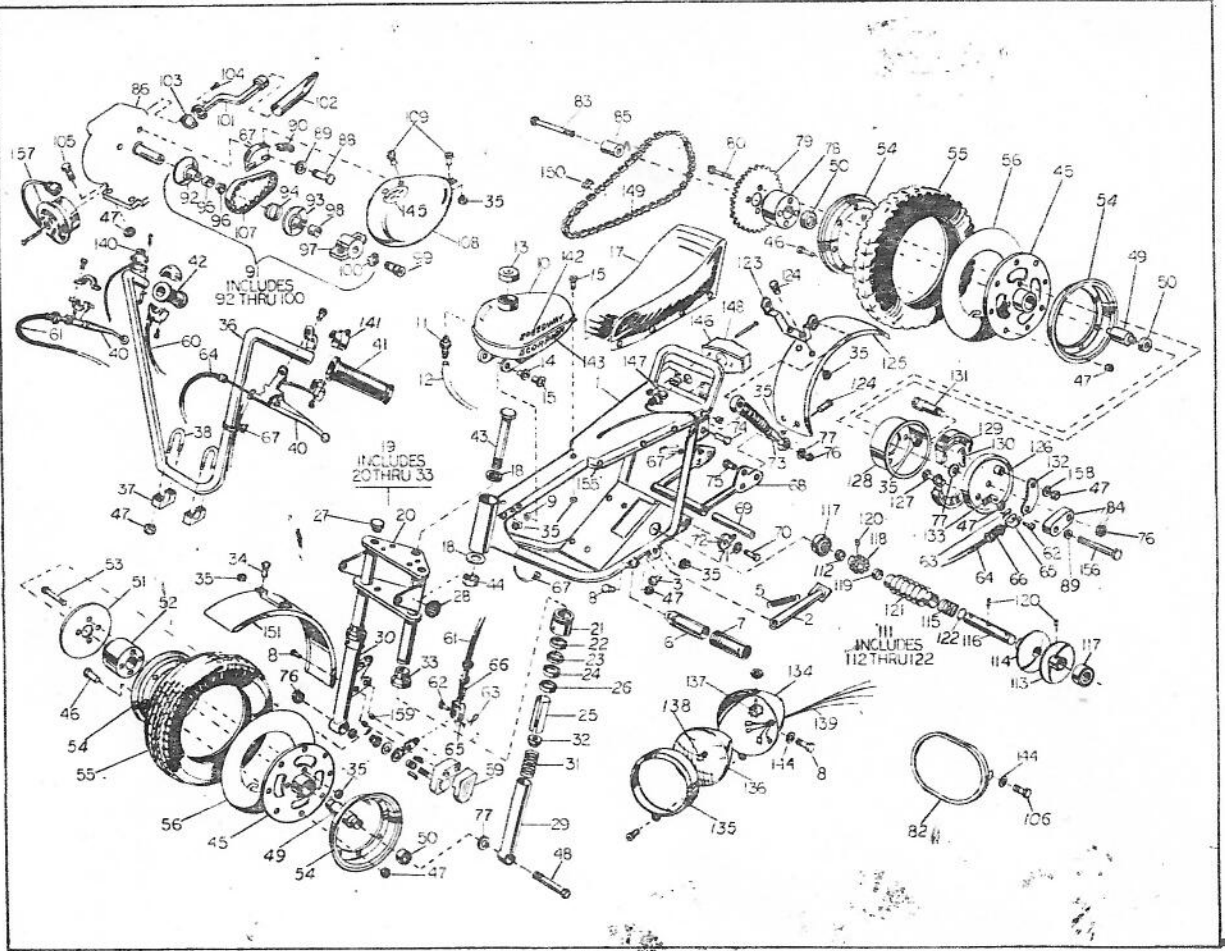
Speedway Products, Inc. warrants each sport cycle manufactured by this company to be free from defects in material and workmanship for 90-days after date of purchase. This Warranty shall not cover parts which wear out during said 90-day period by reason of abnormal use. This Warranty shall not apply to engines since they are subject to the warranty of the engine manufacturer nor shall it apply to Speedway Sport Cycles used for competition racing.

CFH



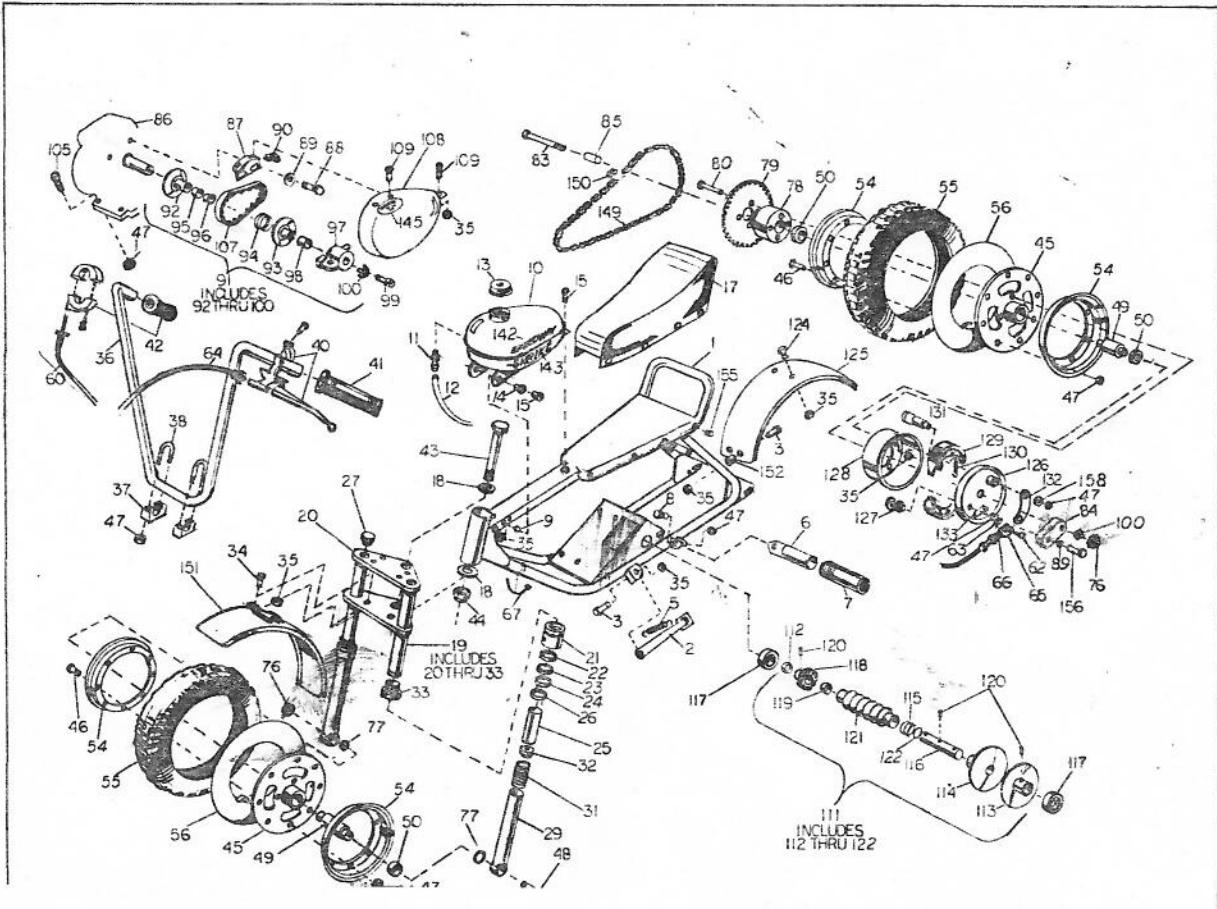
SECTION F  
PARTS DIAGRAM

SCORPION  
&  
SCARAB



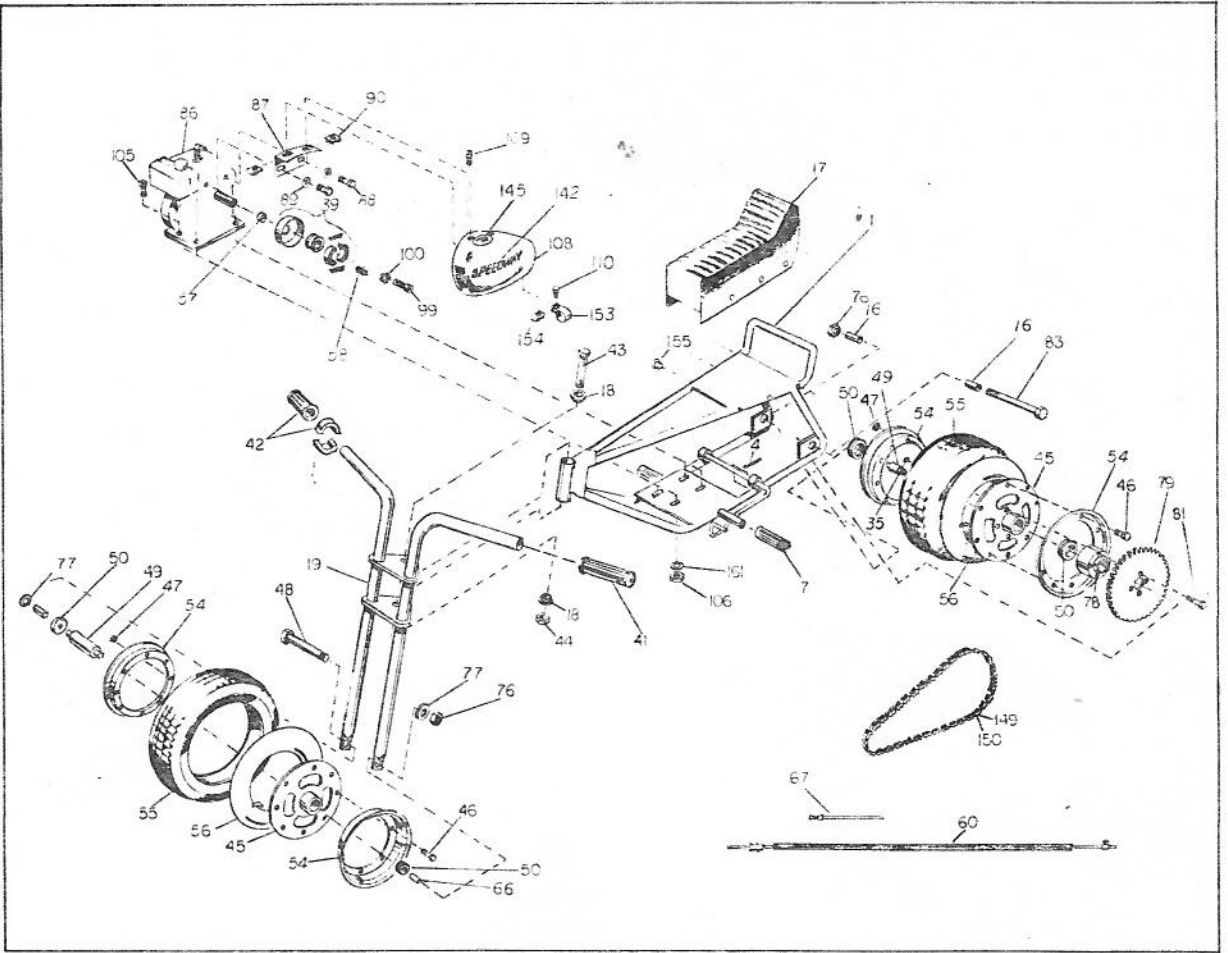
SECTION F  
PARTS DIAGRAM

SHARK  
&  
SHRIKE



SECTION F  
PARTS DIAGRAM

STINGER



**SECTION G  
PARTS LIST**

REF. NO.	DESCRIPTION	PART NO.	NO. REQ'D. SCORPION	NO. REQ'D. SCARAB	NO. REQ'D. SHARK	NO. REQ'D. SHRIKE	NO. REQ'D. STINGER
1	Frame Assembly (Specify Color)	10450	1	1			
	Frame Assembly (Specify Color)	10449		1			
	Frame Assembly	10454			1		
	Frame Assembly	10453				1	
	Frame Assembly	10213					1
2	Kickstand	10130	1	1	1	1	
3	1/4-20 x 1-1/8" H.H.C.S.	10521	1	1	3	3	
4	Brake Return Spring	10221					1
5	Kickstand Return Spring	10134	1	1	1	1	
6	Foot Pedal	10027	2	2	2	2	
7	Foot Pedal Cover	10124	2	2	2	2	2
8	5/16-20 x 1-1/8" H.H.C.S.	10523	4	4	2	2	
9	1/4" SAE Flat Washer	10509	3	3	3	3	
10	Fuel Tank (Specify Color)	10455	1	1	1	1	
11	Fuel Line Connector	10511	1	1	1	1	
12	Fuel Line (Specify Length)	10117	1	1	1	1	
13	Fuel Gage Gas Cap	10501	1				
	Fuel Tank Cap	10173		1	1	1	
	Gasket, Fuel Tank Cap	10261	1	1	1	1	
14	Rubber Grommet	10439	3	3	3	3	
15	1/4-20 x 3/4" Phillips, Pan Head Machine Screw	10525	3	3	3	3	
16	Wheel Spacer	10227					2
17	Seat	10474	1	1			
	Seat Cover Only	10571	1	1			
	Seat	10475			1	1	
	Seat Cover Only	10572			1	1	
	Seat	10205					1
	Seat Cover Only	10339					1
18	Bearing	10198	2	2	2	2	2
19	Front Fork Assembly (Specify color of shock tubes)	10341	1	1			

19

**SECTION G  
PARTS LIST (Continued)**

REF. NO.	DESCRIPTION	PART NO.	NO. REQ'D. SCORPION	NO. REQ'D. SCARAB	NO. REQ'D. SHARK	NO. REQ'D. SHRIKE	NO. REQ'D. STINGER
	Front Fork Assembly, Red Shock Tubes	10343				1	
	Front Fork, Blue	10224					1
20	Front Fork	10434	1	1	1		
	Front Fork	10435				1	
21	Packing Nut	10066	2	2	2	2	
22	Bushing	10437	2	2	2	2	
23	Shock Tube Seal Packing	10064	2	2	2	2	
24	Shock Tube Seal Retainer	10253	2	2	2	2	
25	Nylon Wear Sleeve	10062	2	2	2	2	
26	Spirol Lock Ring	10443	2	2	2	2	
27	1/4" N.P.T. Pipe Plug	10081	2	2	2	2	
28	Amber Safety Reflector	10139	2	2	2		
29	Lower Shock Tube (Specify Color)	10059	1	1	1	2	
30	Lower Shock Tube W/Brake (Specify Color)	10199	1	1	1		
31	Shock Spring	10082	2	2	2	2	
32	Hydraulic Restrictor	10063	2	2	2	2	
33	Dirt Shield	10412	2	2	2	2	
34	1/4-20 x 5/8" H.H.C.S.	10527	2	2	2	2	
35	1/4-20 Cone Lok Nut	10522	19	19	15	15	4
36	Handlebar	10428	1	1	1	1	
37	Handlebar Clamp	10005	2	2	2	2	
38	Handlebar "U" Bolt	10001	2	2	2	2	
39	Clutch Assembly, 9 Tooth	10187					1
	Clutch Housing, 9 Tooth	10289					1
	Clutch Shoe Retainer	10290					1
	Clutch Shoe, Pair	10292					1
	Clutch Spring, Pair	10291					1
	Clutch Bushing	10293					1
40	Brake Hand Lever	10401	2	2	1	1	



**SECTION G**  
**PARTS LIST (Continued)**

REF. NO.	DESCRIPTION	PART NO.	NO. REQ'D. SCORPION	NO. REQ'D. SCARAB	NO. REQ'D. SHARK	NO. REQ'D. SHRIKE	NO. REQ'D. STINGER
42	Twist Grip Assembly W/Grip	10055	1	1	1	1	1
43	Steering Column Bolt	10172	1	1	1	1	1
44	5/8-18 Cone Lok Nut Thin	10528	1	1	1	1	1
45	Hub & Spoke Assembly	10438	2	2	2	2	2
46	5/16-18 x 5/8 H.H.C.S.	10529	16	16	16	16	16
47	5/16-18 Cone Lok Nut	10524	28	28	28	28	20
48	Axle Bolt	10076	1	1	1	1	
	Axle Bolt	10171					1
49	Bearing Spacer	10080	2	2	2	2	2
50	Bearing	10103	4	4	4	4	4
51	Brake Disc	10188	1	1	1		
52	Front Brake Spacer	10240	1	1	1		
53	1/4-20 x 2-1/4" H.H.C.S. Grade 5	10531	4	4	4		
54	10" Rim W/Hole	10142	2	2	2	2	2
	10" Rim W/O Hole	10163	2	2	2	2	2
55	3.50 x 10" Moto Cross Tire	10201	1	2	1	2	
	3.50 x 10" Universal Tire	10200	1		1		
	2.50 x 10" Universal Tire	10573					1
	2.50 x 10" Moto Cross Tire	10574					1
56	3.50-10" Innertube	10274	2	2	2	2	
	2.50-10" Innertube	10390					2
57	Clutch Spacer	10209					1
58	Clutch Key	10208					1
59	Brake Assembly	10272	1	1			
	Brake Puck, Pair	10269	1	1			
	Brake Anvil	10389	1	1			
	Brake Actuating Pin, Pair	10270	1	1			
	Brake Actuating Arm	10271	1	1			
	Castle Nut	10273	1	1			
	Back Up Washer	10275	1	1			

2'

**SECTION G**  
**PARTS LIST (Continued)**

REF. NO.	DESCRIPTION	PART NO.	NO. REQ'D. SCORPION	NO. REQ'D. SCARAB	NO. REQ'D. SHARK	NO. REQ'D. SHRIKE	NO. REQ'D. STINGER
60	1/16 x 1/2" Cotter Pin	10563	1	1			
	Throttle Cable	10057	1	1	1	1	1
	Throttle Cable Clamp W/Screw	10166	1	1	1	1	1
61	Front Brake Cable	10398	1	1	1		
62	Clevis Pin	10190	2	2	2	1	
63	3/32 x 1/2" Cotter Pin	10534	2	2	2	1	
64	Brake Cable W/Switch	10484	1		1		
	Brake Cable W/O Switch	10485		1		1	
65	Brake Cable Clevis	10246	2	2	2	1	
66	Brake Cable Spring	10249	2	2	2	1	
67	Cable Tie	10077	8	3	8	3	1
68	Swing Arm (Specify Color)	10373	1	1			
69	Pivot Rod	10073	1	1			
70	3/8-24 x 1" H.H.C.S.	10535	2	2			
71	3/8" Split Lock Washer	10536	2	2			
72	Chain Adjusting Cam	10286	2	2			
73	Rear Shock Absorber	10075	2	2			
74	3/8-24 x 1-1/2" H.H.C.S.	10537	2	2			
75	3/8-24 x 1-3/8" H.H.C.S.	10538	2	2			
76	3/8-24 Cone Lock Nut	10533	6	6	2	2	2
77	3/8" S.A.E. Flat Washer	10532	8	8	3	3	2
78	Sprocket Spacer	10108	1	1	1	1	1
79	Sprocket 48 Tooth	10025	1				
	Sprocket 54 Tooth	10470		1	1		
	Sprocket 68 Tooth	10206				1	1
80	1/4-20 x 3-1/4" H.H.C.S. Grade 5	10539	4	4	4	4	
81	1/4-20 x 3" H.H.C.S. Grade 5	10556					4
82	Number Panel	10259		1			
83	Axle Bolt	10076	1	1			

**SECTION G  
PARTS LIST (Continued)**

REF. NO.	DESCRIPTION	PART NO.	NO. REQ'D. SCORPION	NO. REQ'D. SCARAB	NO. REQ'D. SHARK	NO. REQ'D. SHRIKE	NO. REQ'D. STINGER
84	Brake Spacer	10371	1	1			
85	Brake Spacer	10471			1	1	
	Axle Spacer	10084	1	1			
	Axle Spacer	10175			1	1	
	Axle Spacer	10222					2
86	Engine, HS 40 W/Alternator	10147	1				
	Engine, HS 40 W/O Alternator	10148		1			
	Engine, HS 30 W/Alternator	10149			1		
	Engine, HS 30 W/O Alternator	10150				1	
	Engine, H25, W/Tank	10183					1
87	Torque Converter Guard Bracket	10120	1	1	1	1	1
88	5/16-24 x 1/2" Phillips, Pan Head Machine Screw	10540	2	2	2	2	2
89	5/16" Internal Tooth Lock Washer	10541	3	3	3	3	2
90	Tinnerman Nut	10160	2	2	2	2	2
91	Drive Converter Assembly	10089	1	1	1	1	2
92	Fixed Drive Sheave	10090	1	1	1	1	
93	Moveable Drive Sheave	10091	1	1	1	1	
94	Drive Converter Spring	10038	1	1	1	1	
95	Belt Roller	10037	1	1	1	1	
96	Belt Roller Retainer	10260	1	1	1	1	
97	Drive Cover	10092	1	1	1	1	
98	Crankshaft Spacer	10041	1	1	1	1	
99	3/8-24 x 1-1/2" H.H.C.S.	10537	1	1	1	1	
100	3/8" Everlock Washer	10241	1	1	2	2	
101	Exhaust Pipe & Muffler	10125	1	1			
102	Muffler Extension	10126	1	1			
103	Exhaust Pipe Gasket	10191	1	1			
104	1/4-20 x 1/2" Phillips, Fillister Hd. Machine Screw	10543	2	2			
105	5/16-18 x 1-1/4" H.H.C.S.	10544	4	4	4	4	4
106	5/16-18 x 1/2" H.H.C.S.	10550		2			

23

**SECTION G  
PARTS LIST (Continued)**

REF. NO.	DESCRIPTION	PART NO.	NO. REQ'D. SCORPION	NO. REQ'D. SCARAB	NO. REQ'D. SHARK	NO. REQ'D. SHRIKE	NO. REQ'D. STINGER
107	Drive Belt	10098	1	1	1	1	
108	Torque Converter Guard	10119	1	1	1	1	
	Chain Guard	10211					1
	1/4-20 x 3/8" Sems-Phil. Pan Hd.	10545	3	3	3	3	2
110	#10-24 x 3/8" Phillips, Fillister Hd. Machine Screw	10555					1
111	Driven Conv. Assembly	10123	1	1	1	1	
112	Sprocket Spacer	10107	1	1	1	1	
113	Fixed Driven Sheave	10161	1	1	1	1	
114	Moveable Driven Sheave	10162	1	1	1	1	
115	Driven Shifter Spring	10099	1	1	1	1	
116	Jackshaft	10102	1	1	1	1	
117	Bearing	10103	2	2	2	2	
118	Sprocket, 8 Tooth	10231	1	1	1	1	
	Sprocket, 10 Tooth	10016	1	1	1	1	
119	Retainer Spring	10356	1	1	1	1	
120	Drive Pin	10244	3	3	3		
121	Driven Converter Boot	10184	1	1	1	1	
122	Jackshaft Shim (Standard)	10232	1	1	1	1	
	Jackshaft Shim (Optional)	10233	1	1	1	1	
123	Rear Fender Bracket	10087	1	1			
124	1/4-20 x 1/2" H.H.C.S.	10546	4	4	2	2	
125	Rear Fender	10136	1	1	1	1	
126	Brake Assembly	10458	1	1	1	1	
127	Brake Anchor	10367	1	1	1	1	
128	Brake Drum	10361	1	1	1	1	
129	Brake Shoe, Pair	10374	1	1	1	1	
130	Brake Return Spring	10372	2	2	2	2	
131	Brake Actuating Cam	10368	1	1	1	1	
132	Brake Actuating Arm	10369	1	1	1	1	

